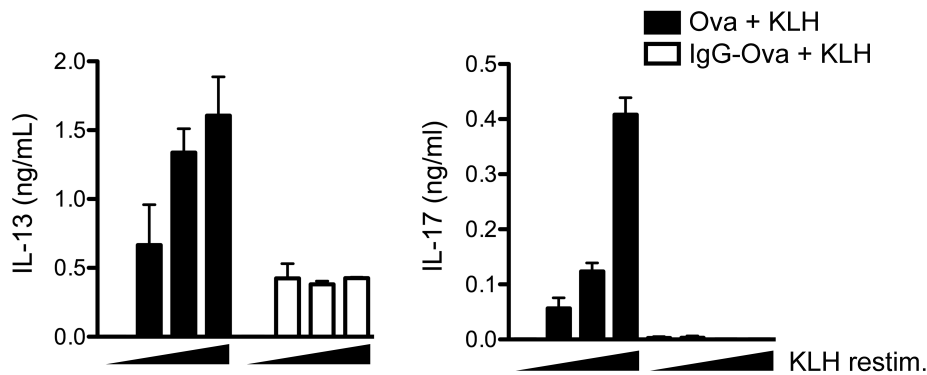


**Supplemental Figure 1.** IgG immune complexes do not effect LPS-induced TNF- $\alpha$  or IL-6 production. (A, B) BMDM were LPS primed in the presence of IgG-Ova or Ova for 4 h and then challenged with silica for 6 h. Cytokine secretion into culture supernatants was measured by ELISA. (C) BMDM were LPS-primed in the presence or absence of Ova, IgG-Ova and IgG for 4 h and then challenged with silica for 6 h. Culture supernatants were collected and analyzed for IL-1 $\beta$  secretion by ELISA. Determinations were performed in triplicate and are expressed as the mean $\pm$ SD. Results shown are representative of two (A, B) or three (C) independent experiments. \* $p\leq 0.05$  by ANOVA with a Bonferroni post-test.



**Supplemental Figure 2.** Immunization with IgG immune complexes suppresses Th2 and Th17 responses. WT mice (n=3 per group) were injected intraperitoneally with either alum/Ova + KLH or alum/IgG-Ova + KLH on day 0; mice were then intranasally challenged with KLH on days 15, 16 and 17. 48 h after the final intranasal challenge mediastinal lymph nodes were collected, pooled and restimulated *in vitro* with KLH protein (0, 100, 200 and 500  $\mu$ g). 72 h later supernatants were collected and analyzed for IL-13 and IL-17A by ELISA. Determinations were performed in triplicate and are expressed as the mean $\pm$ SD.