

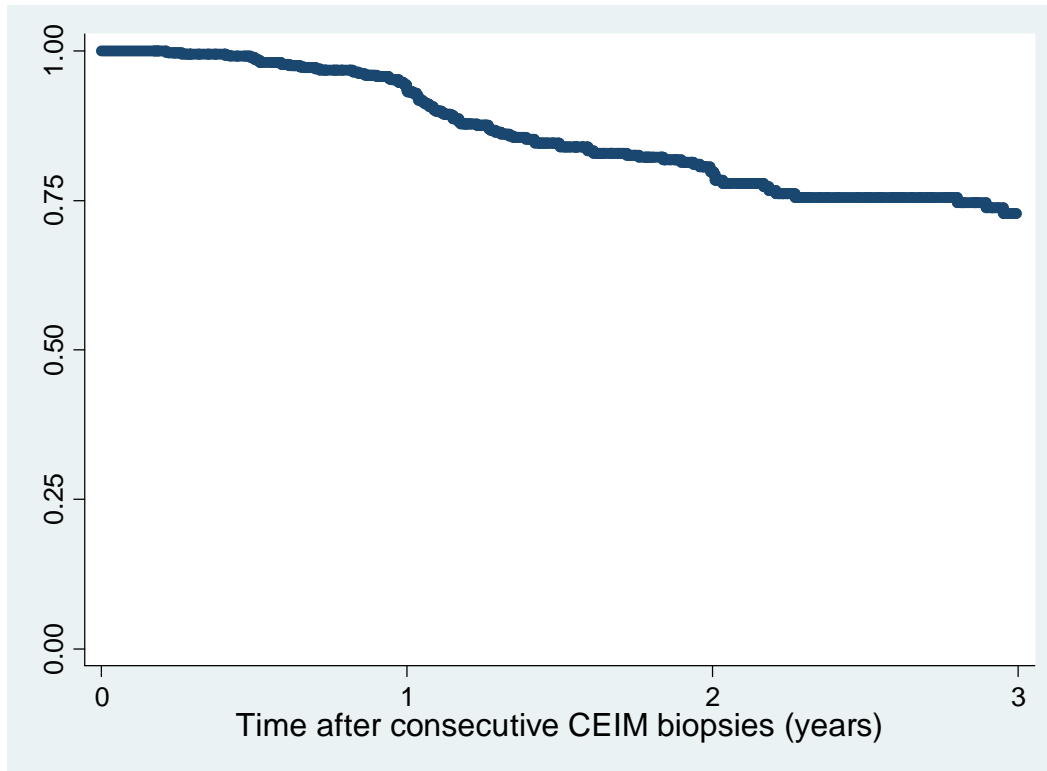
Appendix

Supplemental Table 1: IM recurrence rates after consecutive biopsies with CEIM stratified by pre-treatment histology

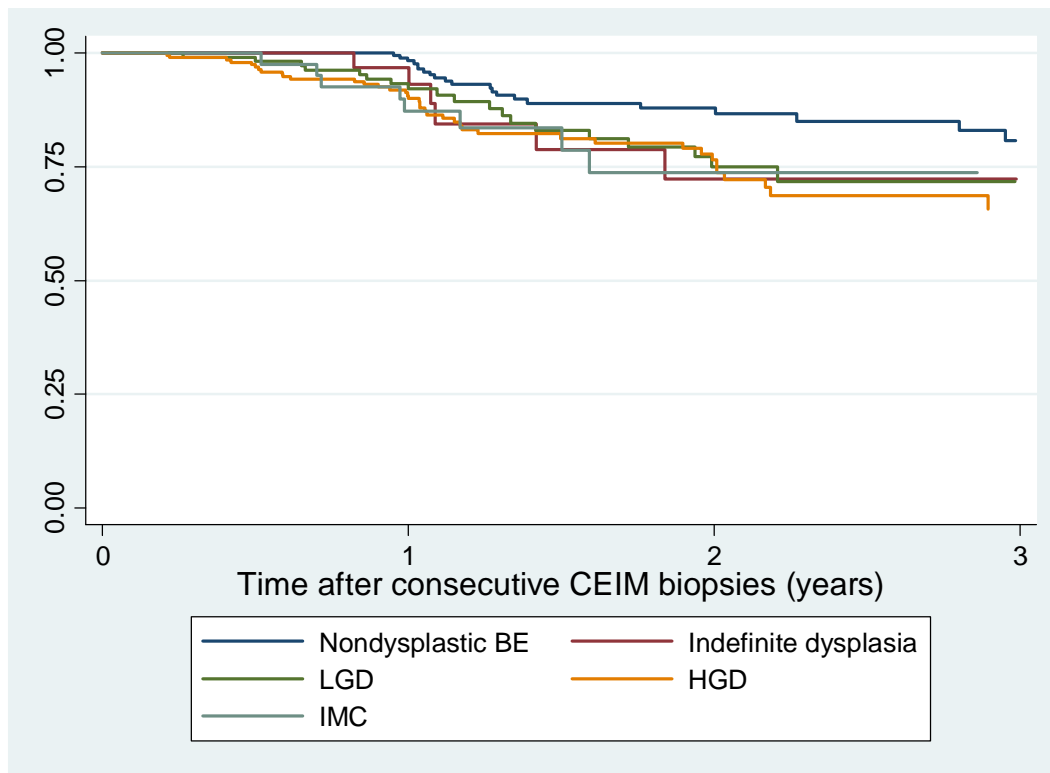
	Pre-treatment Histology							p-value
	All patients (N=604)	NDBE (N=201)	IND (N=36)	LGD (N=114)	HGD (N=202)	IMC (N=44)	EAC (N=7)	
# Recurrences, n (%)	97 (16)	24 (12)	6 (17)	19 (17)	39 (19)	8 (18)	1 (14)	
Time to recurrence, years; mean \pm SD	1.3 \pm 0.8	1.8 \pm 1.3	1.2 \pm 0.4	1.2 \pm 0.5	1.2 \pm 0.6	1.0 \pm 0.4	1.0	0.03
Recurrences/year	10%	6%	11%	11%	12%	13%	9%	0.10

NDBE, Non dysplastic Barrett's esophagus; IND, Indefinite for dysplasia; LGD, Low grade dysplasia; HGD, High grade dysplasia; IMC, Intramucosal carcinoma; EAC, Esophageal adenocarcinoma

Supplemental Figure 1: Recurrence free survival in patients with consecutive biopsies showing CEIM (n=604)



Supplemental Figure 2: Recurrence free survival after consecutive biopsies showing CEIM grouped by pre-treatment histology (n=597)



LGD, Low grade dysplasia; HGD, High grade dysplasia; IMC, Intramucosal Carcinoma