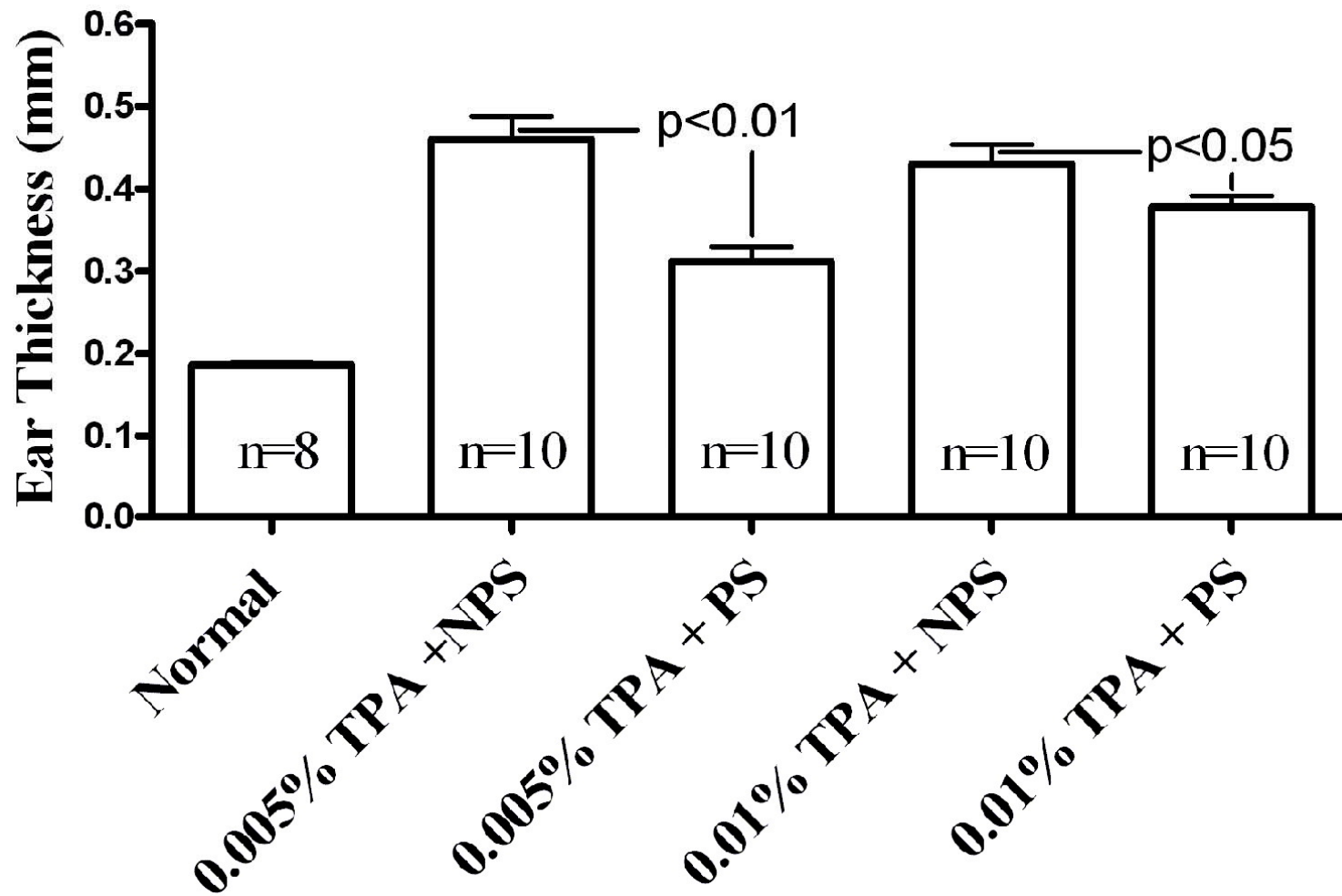
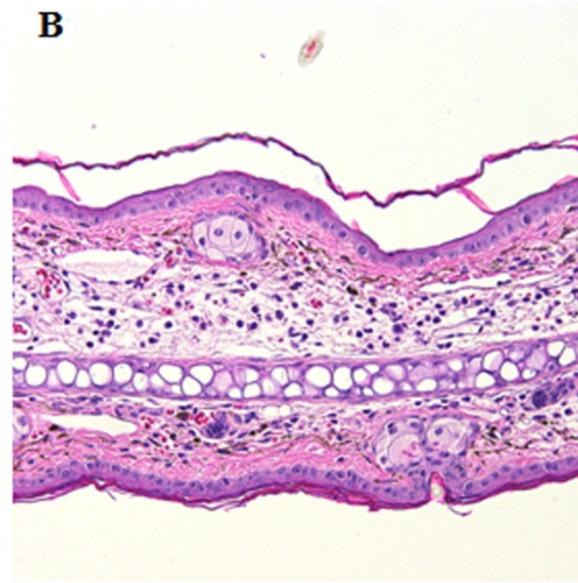
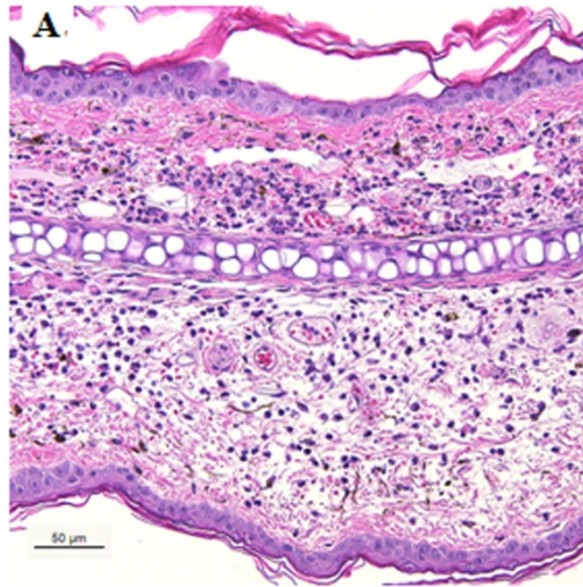


**Suppl. Fig. 1: Exogenous Stress Increases Serum GC Levels:** Blockage of GC receptor with mifepristone (Ru486) does not affect GC levels.

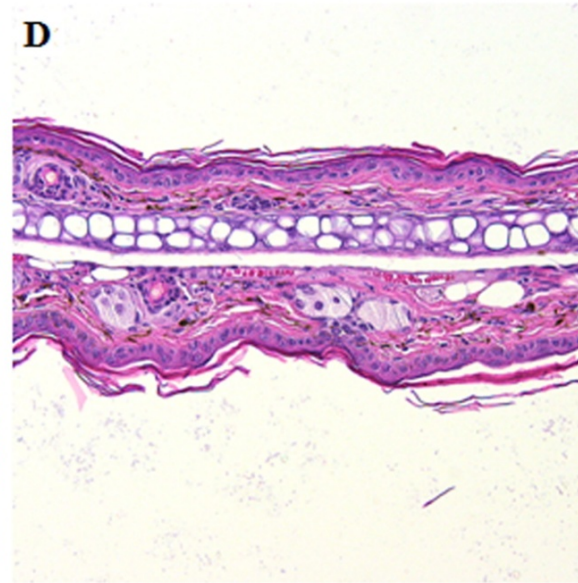
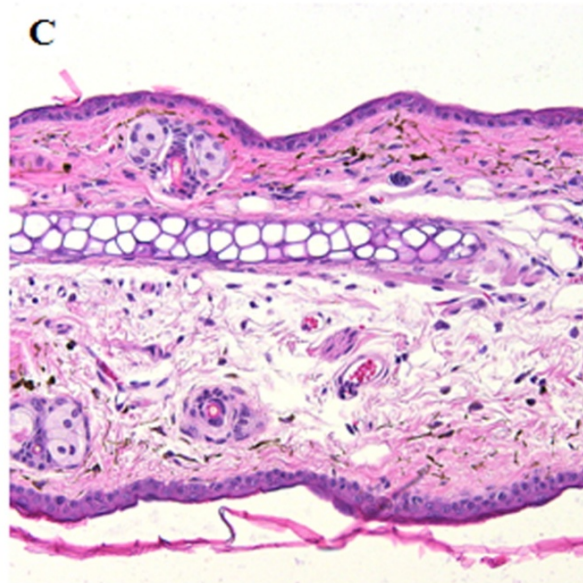


**Suppl. Fig. 2: Benefits of Stress in ICD Become Less Apparent at Higher Doses of Phorbol Ester**

**ICD**



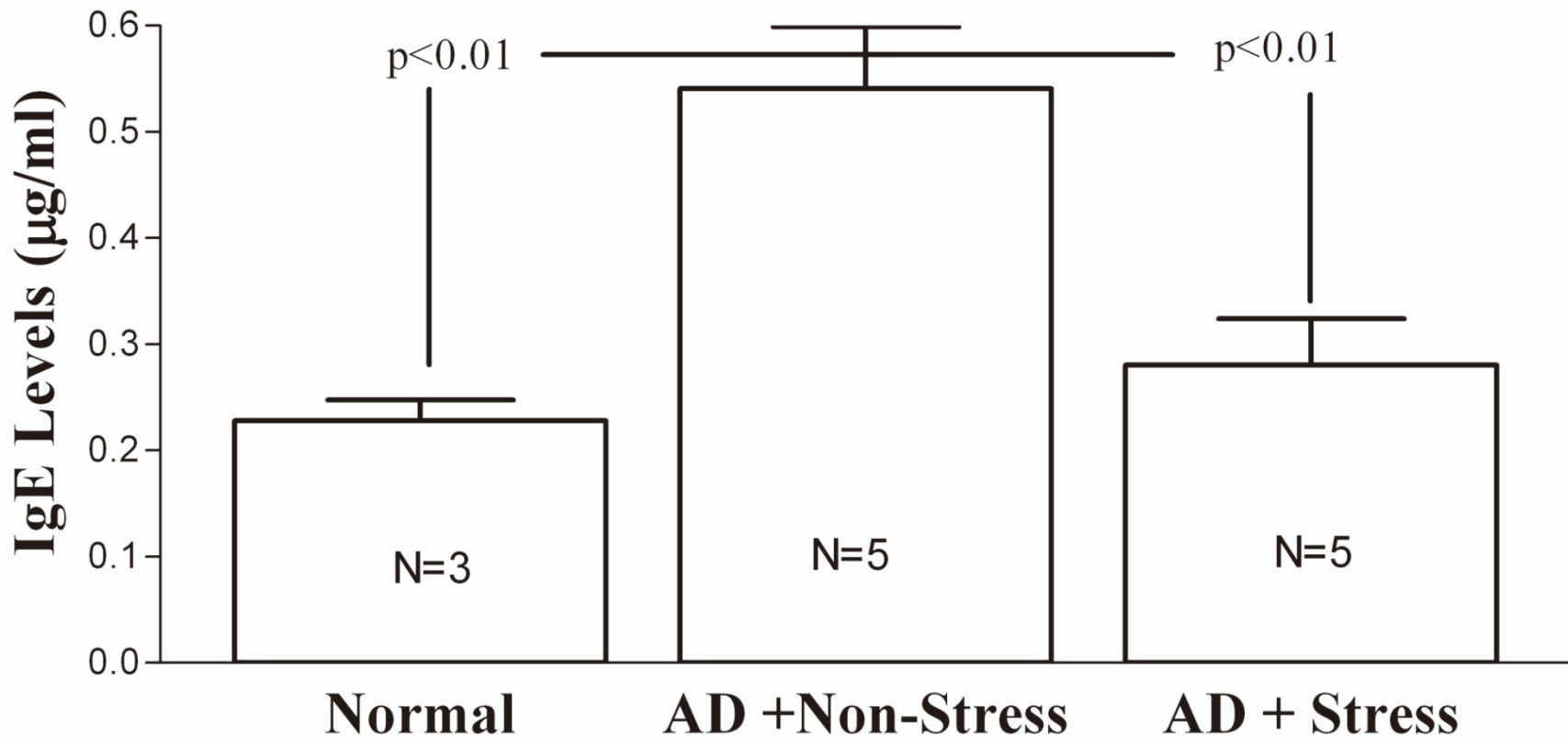
**ACD**



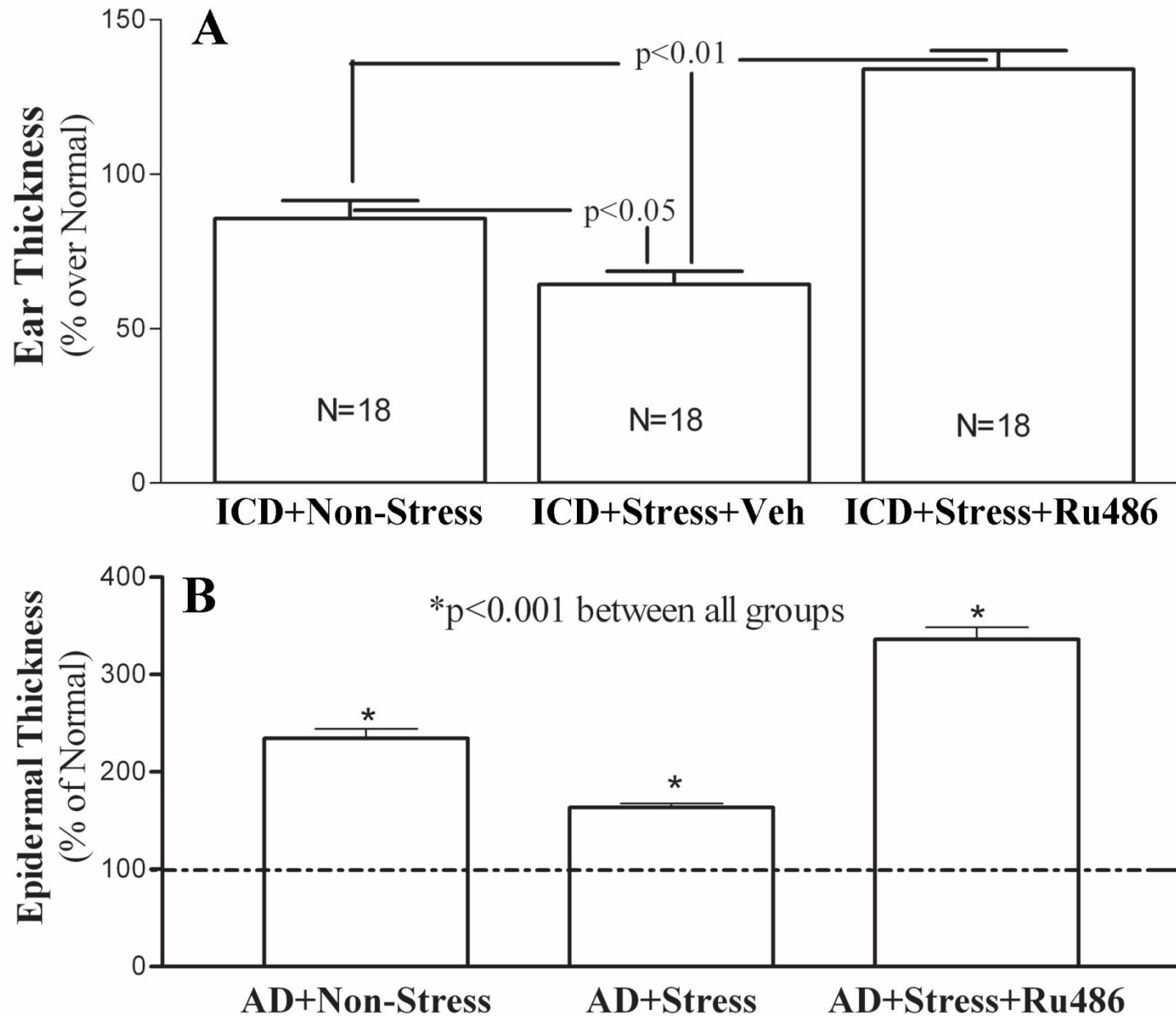
**Non-Stress**

**Stress**

**Suppl. Fig. 3: Marked Reduction in Ear Thickness and Inflammation in Stressed ICD and ACD Mice**



**Suppl. Fig. 4: Stress Normalizes IgE Levels in AD Mice**



**Suppl. Fig. 5: Co-Administered Mifepristone (Ru486) Aggravates Inflammation in ICD and AD Mice**