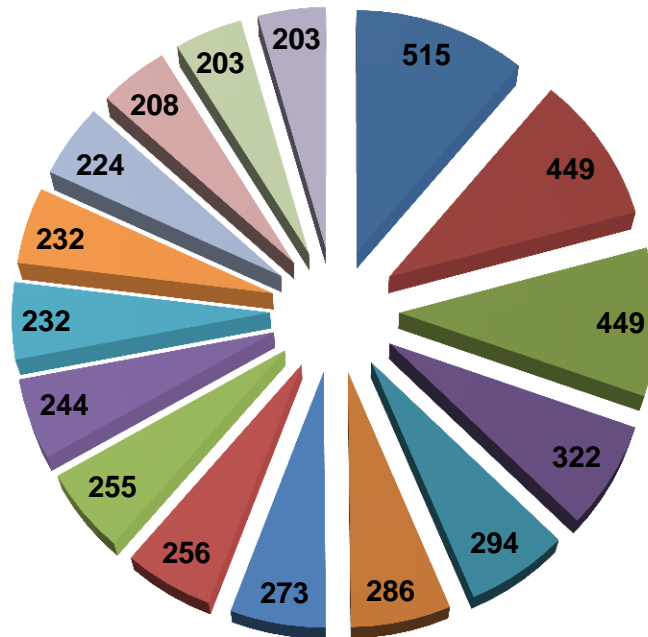


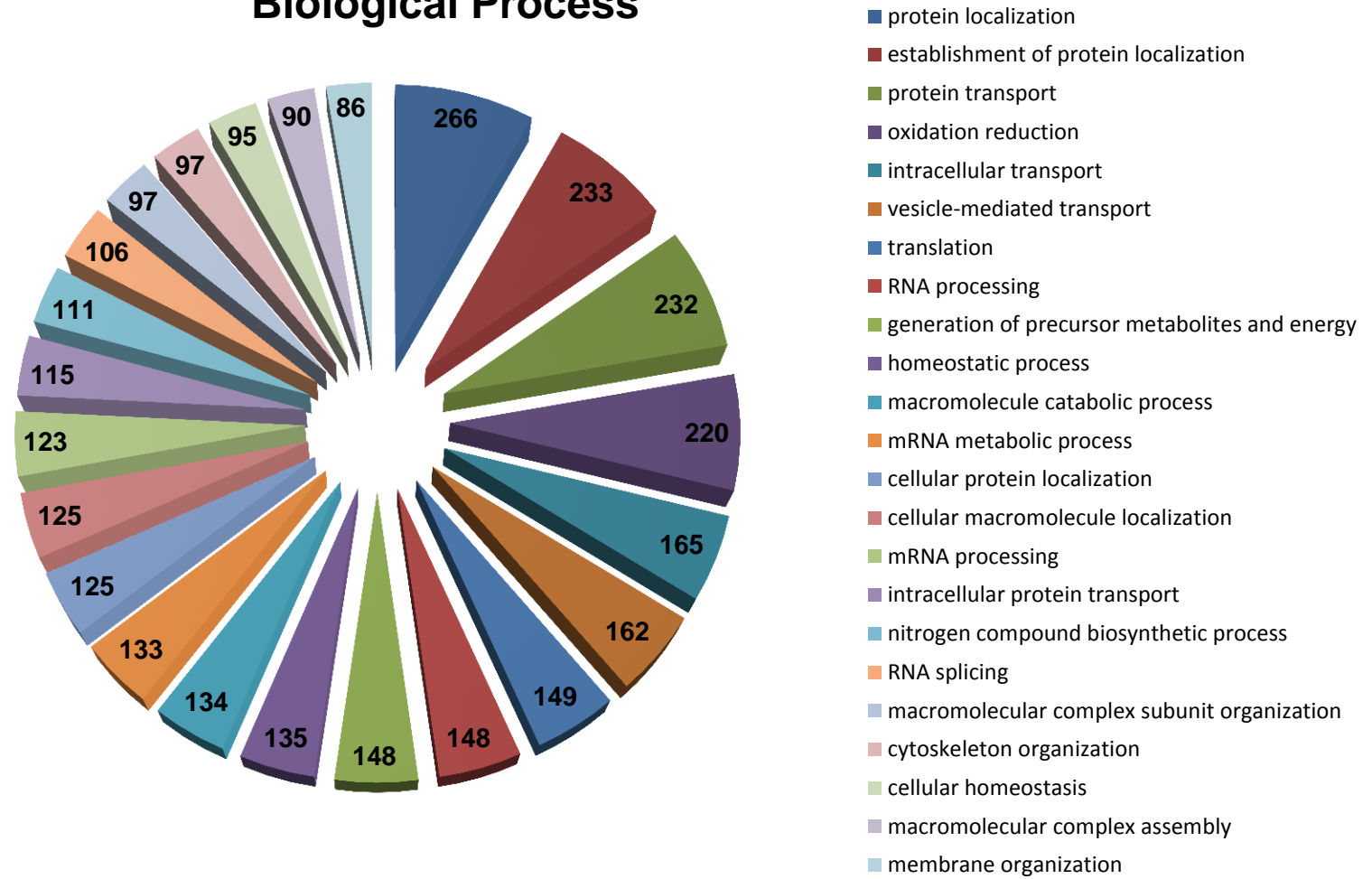
### Cellular Component



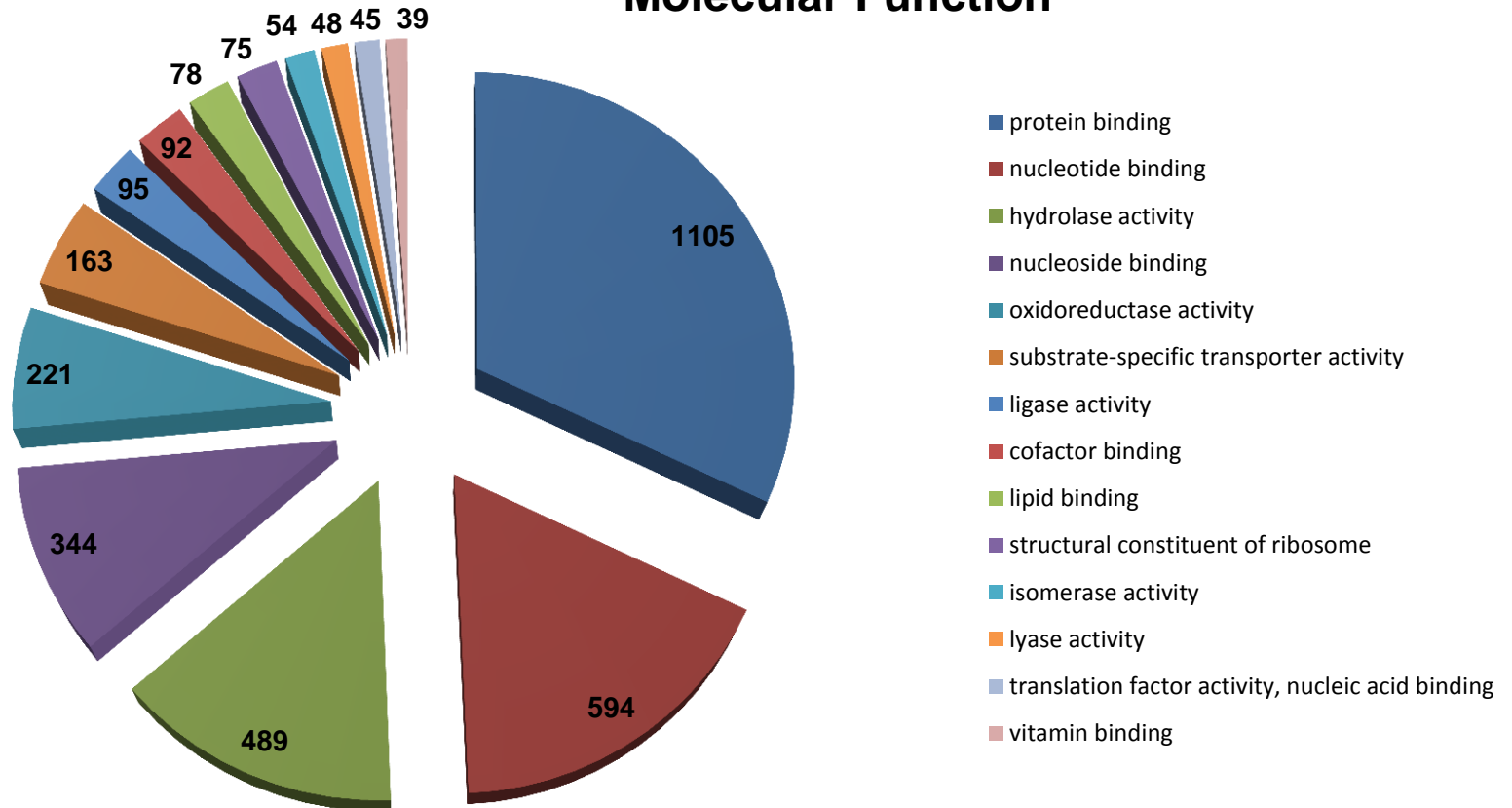
- mitochondrion
- intracellular non-membrane-bounded organelle
- non-membrane-bounded organelle
- plasma membrane part
- organelle membrane
- cytoskeleton
- membrane-enclosed lumen
- organelle lumen
- intracellular organelle lumen
- mitochondrial part
- organelle envelope
- envelope
- cytosol
- ribonucleoprotein complex
- endoplasmic reticulum
- cytoskeletal part

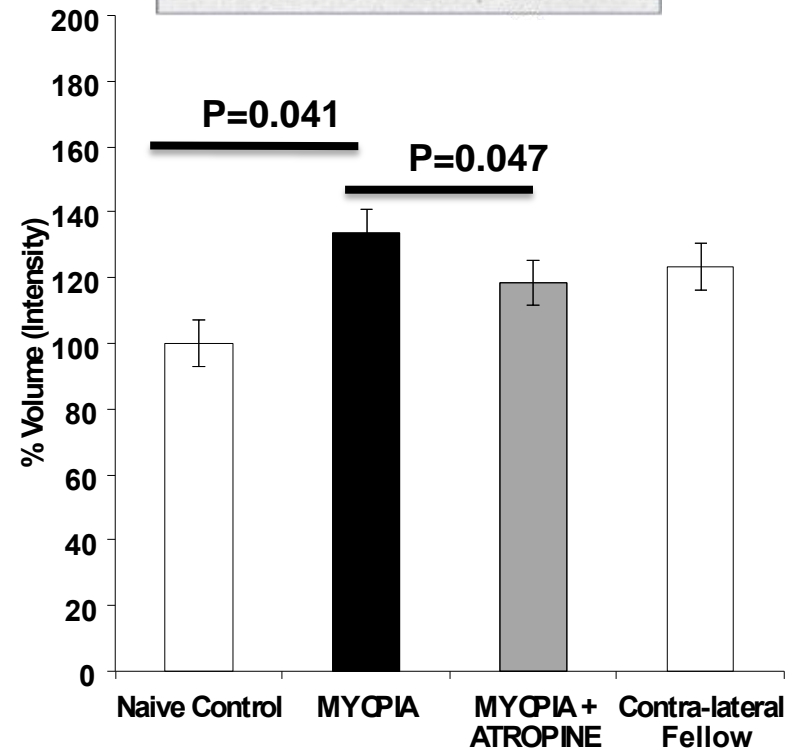
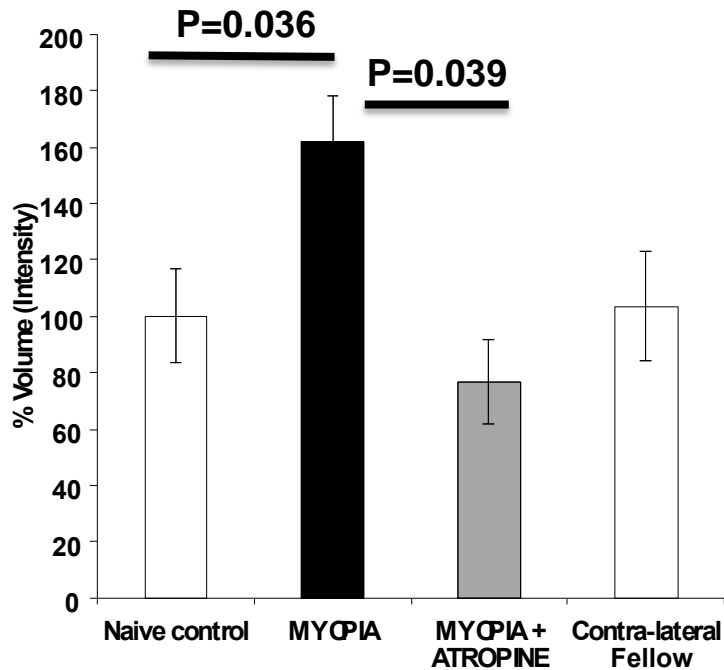
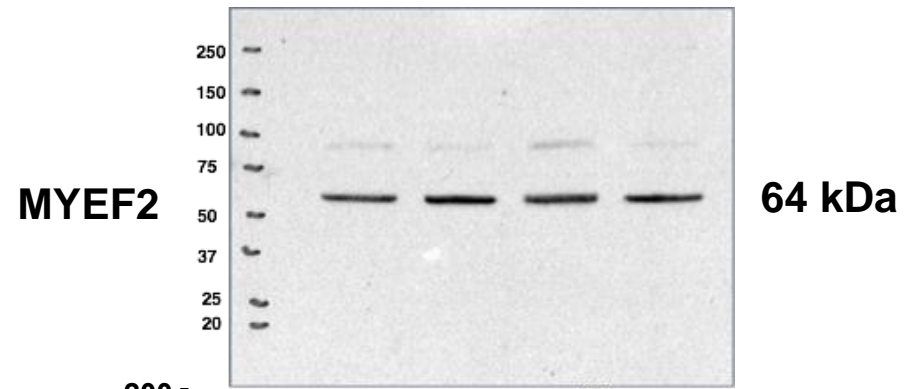
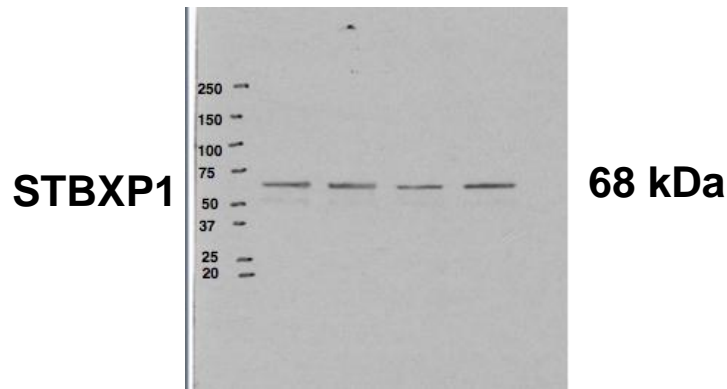
**Supplemental Figure 1.** Gene ontology analysis of mouse retina proteome. (A) Cellular component; (B) Biological process; (C) Molecular function.

### Biological Process



## Molecular Function





**Supplemental Figure 2.** In addition to GAT-1, data from quantitative proteomic results for top 2 proteins were also validated by Western blot analysis. The retinal levels of; Myelin Expression Factor2 (MEF2) and Isoform 1 of Syntaxin-binding protein 1 (STXBP1) in lens-induced myopic, contra-lateral fellow, atropine treated and naïve control eyes. Western blot analysis showed a pattern of protein expression similar to that of proteomics analysis. Data represent the mean $\pm$ SD; Significance level  $P\leq 0.05$ .