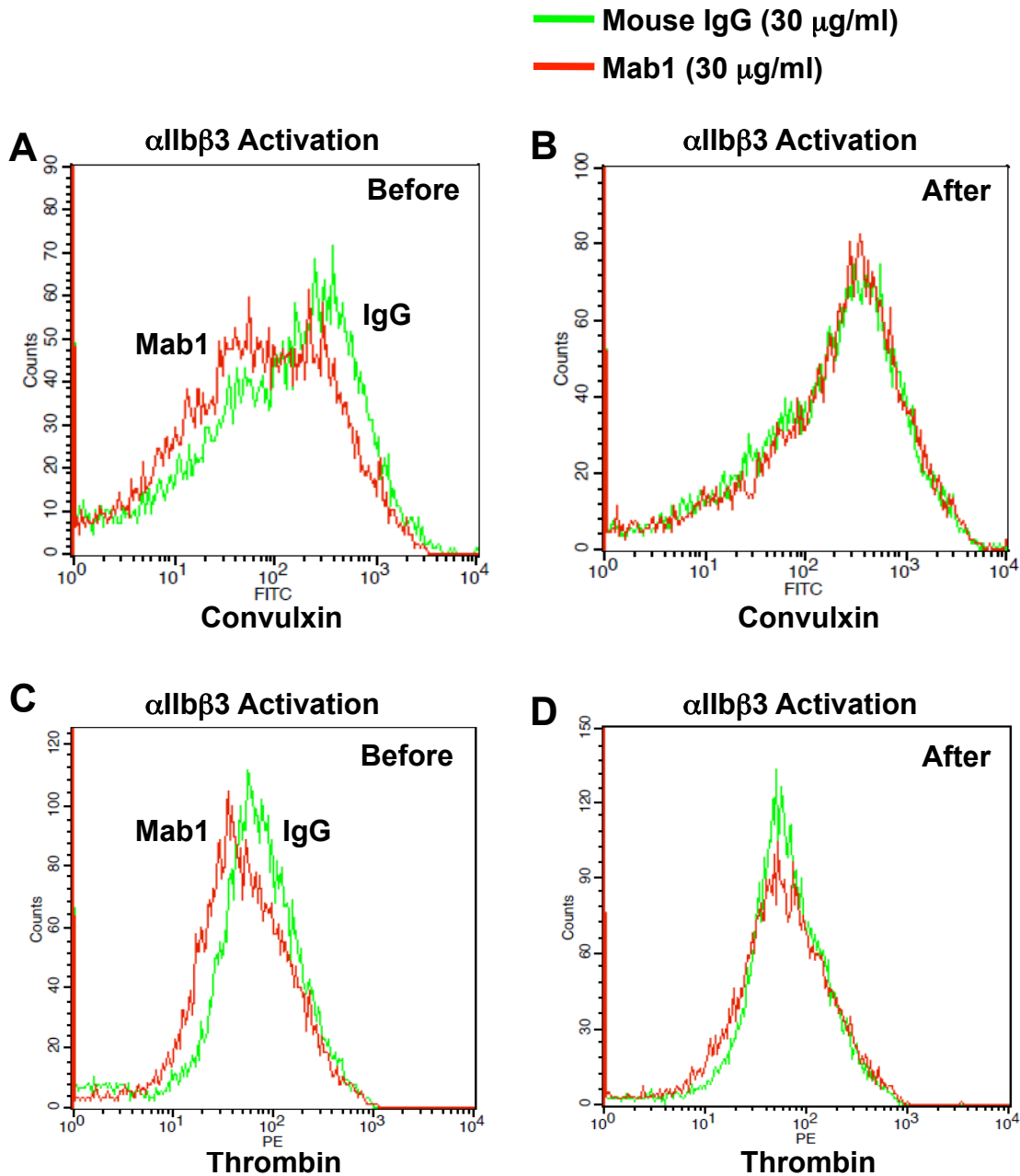


Figure S1



Supplemental Figure 1. Mab1 does not inhibit binding of the activation dependent antibodies to human or mouse platelets when added after platelet activation. In (A) and (B) human platelets were activated with convulxin (10 ng/ml). (A) Mab1 was added 20 minutes prior to activation; (B) Mab1 was added after activation. The activation dependent antibody PAC1 was used to detect activation of human $\alpha\text{IIb}\beta\text{3}$. In (C) and (D) mouse platelets were activated with thrombin (0.015 U/ml). (A) Mab1 was added 20 minutes prior to activation; (B) Mab1 was added after activation. The activation dependent antibody JON/A was used to detect activation of mouse $\alpha\text{IIb}\beta\text{3}$. The platelet samples were prepared and analyzed by flow cytometry as described (Wang et al. Blood. 2013;122:3642).