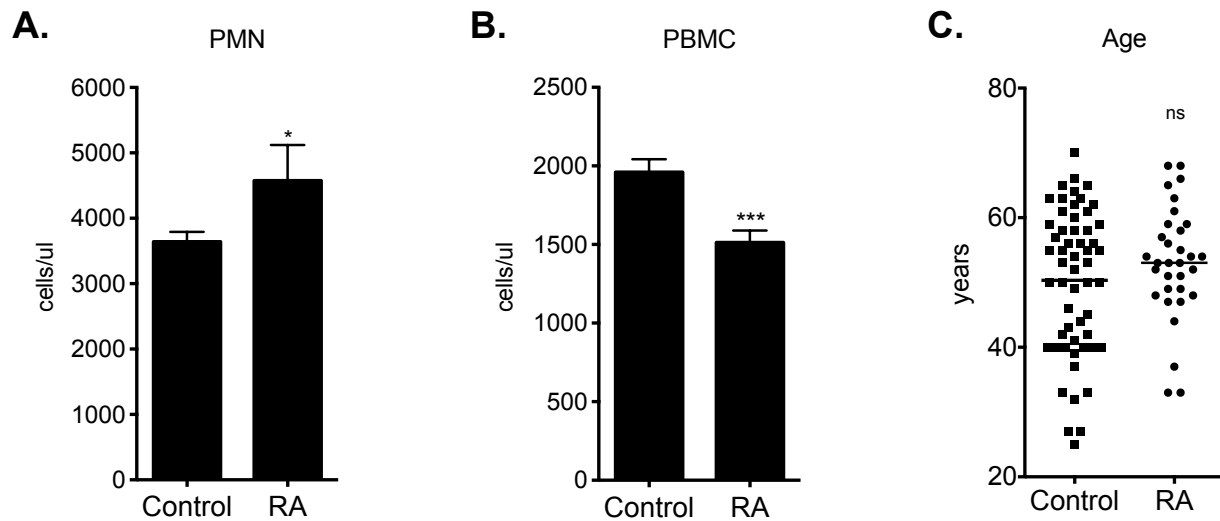


## Additional Figure 1



**Additional Figure 1.** Neutrophil, peripheral blood leucocyte counts and age distribution in RA cases and control cohorts.

(A) Neutrophil levels in cases with RA (n = 32) and matched healthy blood donors (n = 56). (B) Peripheral blood mononuclear cell count in RA cases and healthy control donors. (C) Age distribution of RA cases and matched healthy blood donors. \*P < 0.05, \*\*\*P < 0.001, n.s.: statistically not significant, Mann-Whitney U test; PMN: polymorphonuclear leukocytes; PBMC: peripheral blood mononuclear cells.