

Supplemental Materials

Molecular Biology of the Cell

Ravel-Chapuis et al.

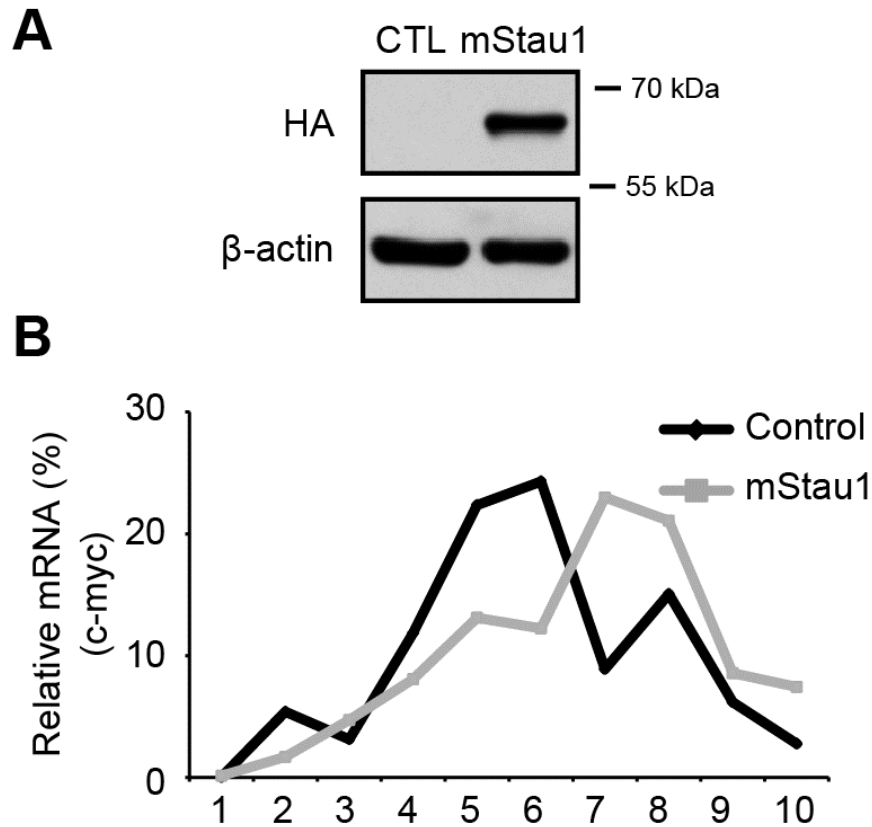


Figure S1: Staufen1 overexpression shifts the distribution of c-myc mRNAs to the polysome fractions. C2C12 cells were transiently transfected with pcDNA3 control or Staufen1-HA vectors. **(A)** Western blots showing expression of Staufen1-HA in transfected cells. β -actin was used as a loading control. **(B)** Polysome profiling as in Figure 8E of control and Staufen1-HA transfected proliferating C2C12 cells. Levels of c-myc mRNAs were measured by qRT-PCR from ten 1 ml sucrose gradient fractions.