

Supplemental Materials

Structural Insight into the Central Element Assembly of the Synaptonemal Complex

Jing Lu^{1,2}, Yanling Gu^{1,2}, Jianrong Feng^{1,2}, Weihong Zhou², Xue Yang¹, Yuequan
Shen^{1,2,3,4}

¹State Key Laboratory of Medicinal Chemical Biology, Nankai University, 94 Weijin
Road, Tianjin 300071, China

²College of Life Sciences, Nankai University, 94 Weijin Road, Tianjin 300071, China

³Synergetic Innovation Center of Chemical Science and Engineering, 94 Weijin Road,
Tianjin 300071, China

⁴To whom correspondence may be addressed.

Yuequan Shen,

E-mail: yuequan74@yahoo.com; yshen@nankai.edu.cn; Tel: +86-22-23506462

Running title: structure of syce3 protein

Fig 2C

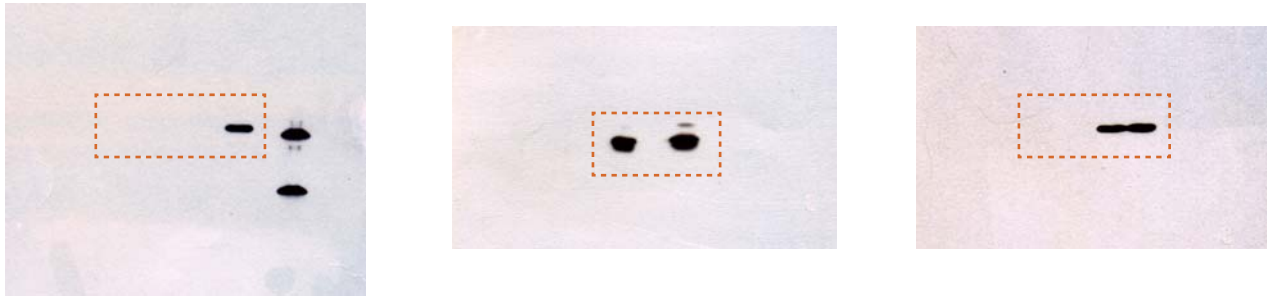


Fig 3A

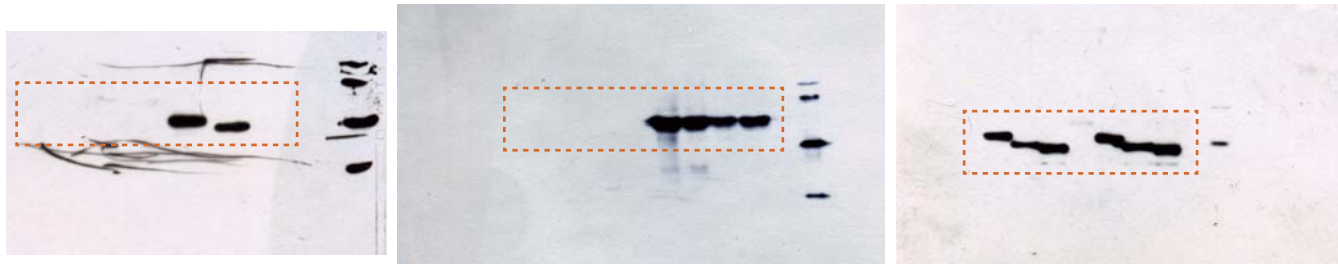


Fig 3B

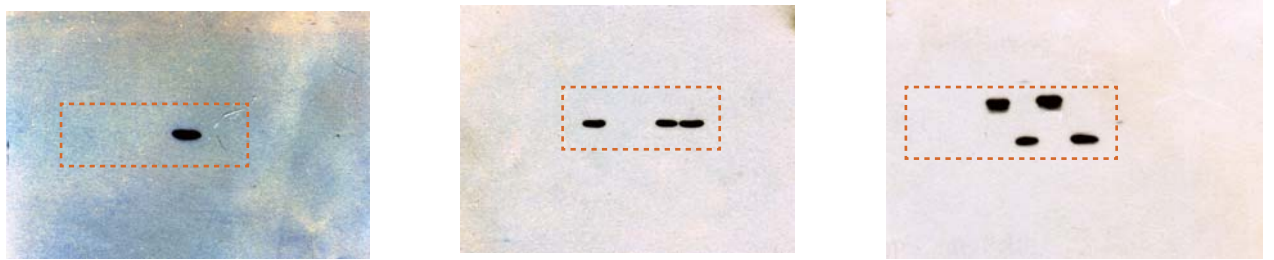


Fig 2D

