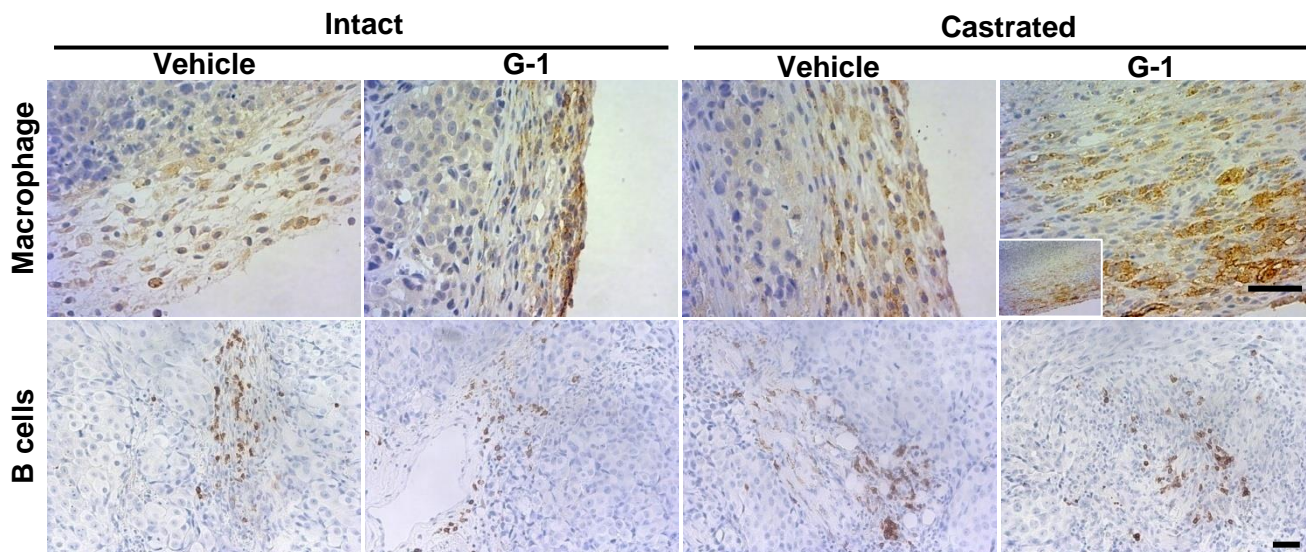


Figure S1



IHC staining of macrophages and B cells in LNCaP xenografts. Macrophages were detected in the tumor capsule, and B cells were exclusively found in the intra-tumoral stroma in both vehicle and G-1 treated groups in intact or castrated host. Magnification: 200x (macrophage); 100x (macrophage insert and B cells). Scale bars represent 50 $\mu$ m in all micrographs.