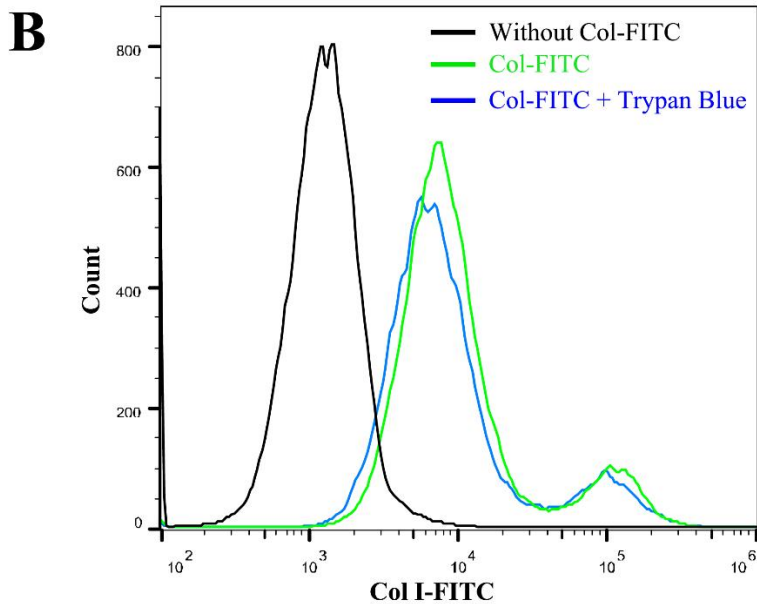
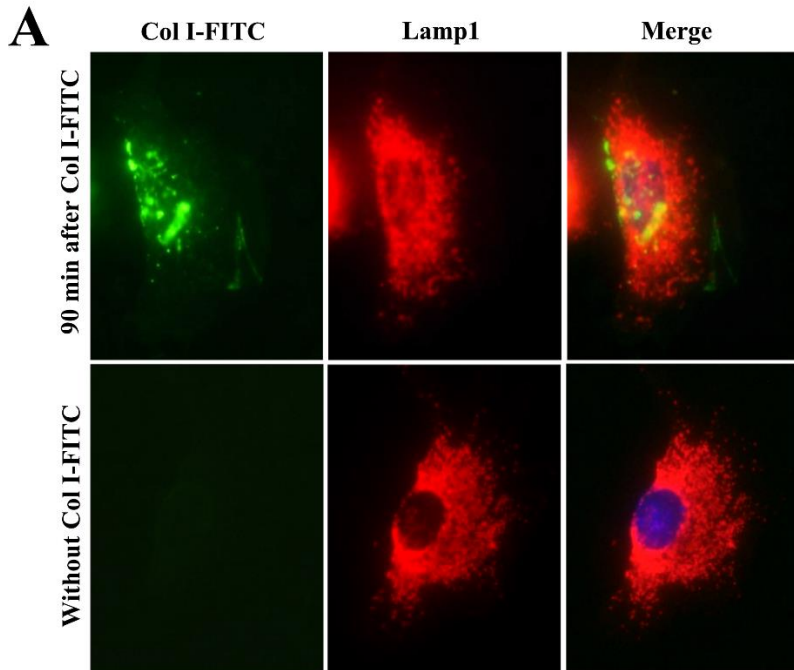


**Supplemental Figure 1. Mice with hematopoietic cell deletion of col1a1 have similar injury after bleomycin compared to control mice**

Bronchoalveolar lavage (BAL) cells from littermate control and Vav-Col mice were collected and counted 0 (uninjured), 14, and 21 days after intratracheal bleomycin injury. Control and Vav-Col mice have similar numbers of BAL macrophages (macs) (A), lymphocytes (Lymphs) (B) and neutrophils (PMNs) (C).



**Supplemental Figure 2. Internalization of FITC-collagen I.**

A) 90 minutes with or without FITC-conjugated collagen I (Col I-FITC) primary lung mesenchymal cells were stained for lysosomal marker, LAMP1, demonstrating co-localization of Col I-FITC and LAMP1. B) 90 minutes after Col I-FITC treatment primary lung mesenchymal cells were analyzed by flow cytometry with and without cell surface fluorescence quenching with trypan blue.