

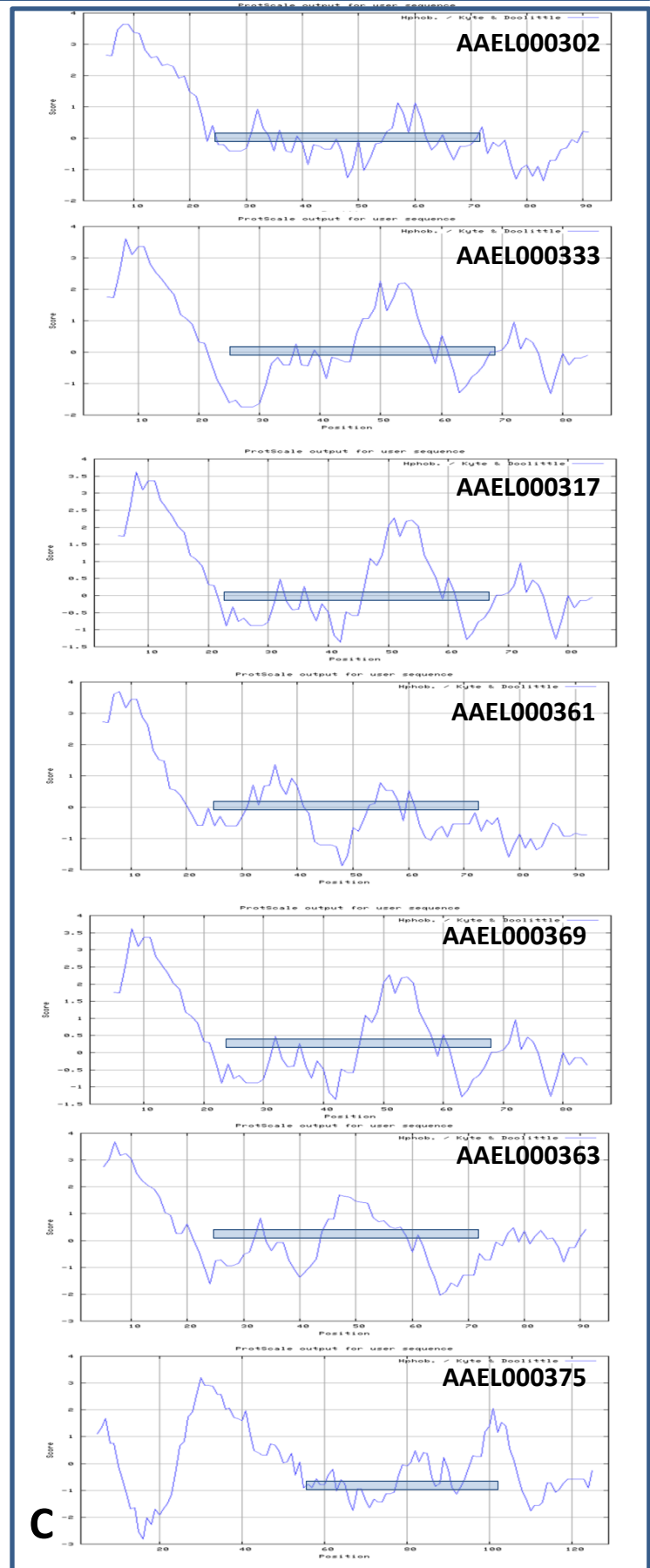
Unconserved 0 1 2 3 4 5 6 7 8 9 10 Conserved

	1	2	3	4	5	6	7	8	9	10	11	12	13	14	15	16	17	18	19	20	21	22	23	24	25	26	27	28	29	30	31	32	33	34	35	36	37	38	39	40	41	42	43	44	45	46	47	48	49	50
AAEL000369	CG	P	N	E	V	Y	S	E	G	T	A	C	P	E	T	C	D	N	L	G	E	N	I	P	C	V	L	M	C	V	P	G	C	F	C	Q	P	G	V	R	N	N	V	T	G					
AAEL000333	CG	P	N	E	E	Y	S	E	G	T	A	C	P	E	T	C	D	T	L	G	E	I	K	P	C	I	L	L	C	V	R	G	C	F	C	Q	P	G	V	R	N	N	V	T	G					
AAEL000302	CG	P	N	D	L	Y	L	E	G	S	A	C	P	E	T	C	D	T	L	G	E	V	K	P	C	T	R	Q	C	I	R	G	C	F	C	Q	L	G	V	R	N	T	V	T	G					
AAEL000317	CG	P	N	E	V	Y	S	E	G	T	A	C	P	E	T	C	D	N	L	G	E	N	I	P	C	V	L	M	C	V	P	G	C	F	C	Q	P	G	V	R	N	N	V	T	G					
AAEL000361	CA	E	E	V	Y	S	E	G	S	A	C	P	F	V	T	C	D	T	L	G	E	D	K	P	C	D	Y	P	C	I	R	G	C	F	C	Q	P	G	V	R	N	T	A	T	G					
AAEL000363	AD	P	N	E	V	Y	D	C	G	S	A	C	P	Q	R	T	C	N	N	E	L	I	Y	I	L	C	I	K	K	C	V	P	G	C	F	C	R	D	G	V	R	Q	Y	D	N	G				
AAEL000375	LD	P	N	T	E	F	R	L	G	D	E	C	P	F	R	T	C	E	N	L	D	P	K	P	P	C	T	Q	V	C	A	R	G	C	Y	C	K	K	G	F	V	R	D	N	I	S	G			
AAEL005090	PN	P	N	E	V	Y	N	C	G	T	P	C	P	Q	R	T	C	K	N	L	N	I	Y	M	Y	C	I	E	K	C	V	P	G	C	F	C	R	D	G	V	R	Q	Y	D	N	G				
AAEL005487	CS	G	A	F	E	E	-	R	C	Y	G	C	Y	E	P	T	C	A	V	P	E	Q	N	I	Q	-	F	A	C	N	D	G	C	V	C	K	D	G	Y	I	R	S	C	D	K	G				
AAEL005098	L	Q	Y	E	V	F	Q	D	C	A	S	V	C	P	A	T	C	D	A	P	Y	G	N	-	N	C	A	S	P	G	C	A	C	M	D	G	V	R	N	-	A	S	Y							
Consistency	4	4	0	6	5	8	5	8	3	4	*	0	6	5	5	*	0	6	4	*	*																													

	61	62	63	64	65	66	67	68	69	70
AAEL000369	A	C	V	K	P	C	E	C	E	F
AAEL000333	A	C	V	K	P	C	E	C	E	F
AAEL000302	E	C	V	K	P	C	D	C	E	F
AAEL000317	A	C	V	K	P	C	E	C	E	F
AAEL000361	E	C	V	R	E	C	D	C	E	F
AAEL000363	P	C	V	R	L	E	E	C	E	F
AAEL000375	L	C	V	L	P	C	D	C	E	F
AAEL005090	P	C	V	P	I	G	E	C	E	F
AAEL005487	P	C	I	P	K	Q	C	E	F	
AAEL005098	V	C	V	R	L	C	D	C	E	F

B

Additional file 7. Sequence and hydrophobicity conservation among *Aedes aegypti* eggshell cysteine-rich proteins. A) Full length protein sequences were submitted to MEME <http://meme.nbcr.net/meme/cgi-bin/meme.cgi> and a conserved motif 50 amino acids in length was discovered. B) Multiple alignment of the sequence motif constructed at PRALINE <http://www.ibi.vu.nl/programs/pralinewww/> supports the conservation. C) The hydrophobicity patterns of the cysteine-rich proteins were predicted at <http://web.expasy.org/cgi-bin/protscale/protscale.pl> using the Hphob. / Kyte & Doolittle option. Bars were inserted in the graphs to indicate the positions of the conserved motif displayed in A and B.



C