

SUPPLEMENTAL MATERIAL

Guiu et al., <http://www.jem.org/cgi/content/full/jem.20131857/DC1>

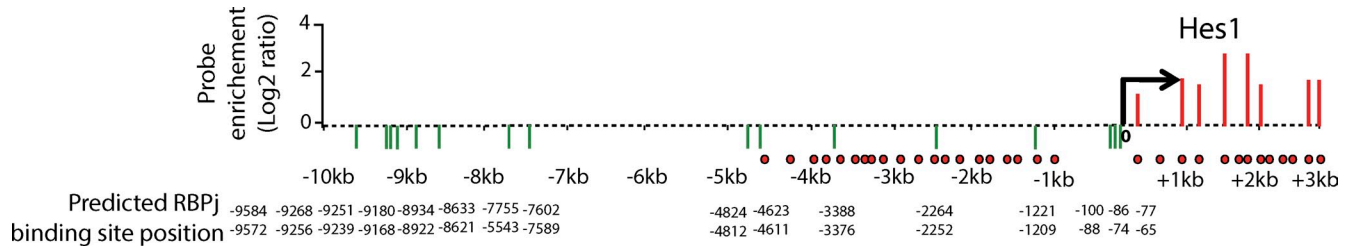


Figure S1. Hes1 predicted RBPj-binding sites. This figure is related to Fig. 2. (A) Schematic representation of the promoter region of *Cdca7* showing the array probe position (red circles), DNA (black dashed line), TSS (black arrow), putative RBPj-binding site (green bars), and probe enrichment in log₂ ratio (red bars). RBPj-binding sites were identified with the Genomatix and STORM software scanning from the -10- to 0-kb region of each target gene.

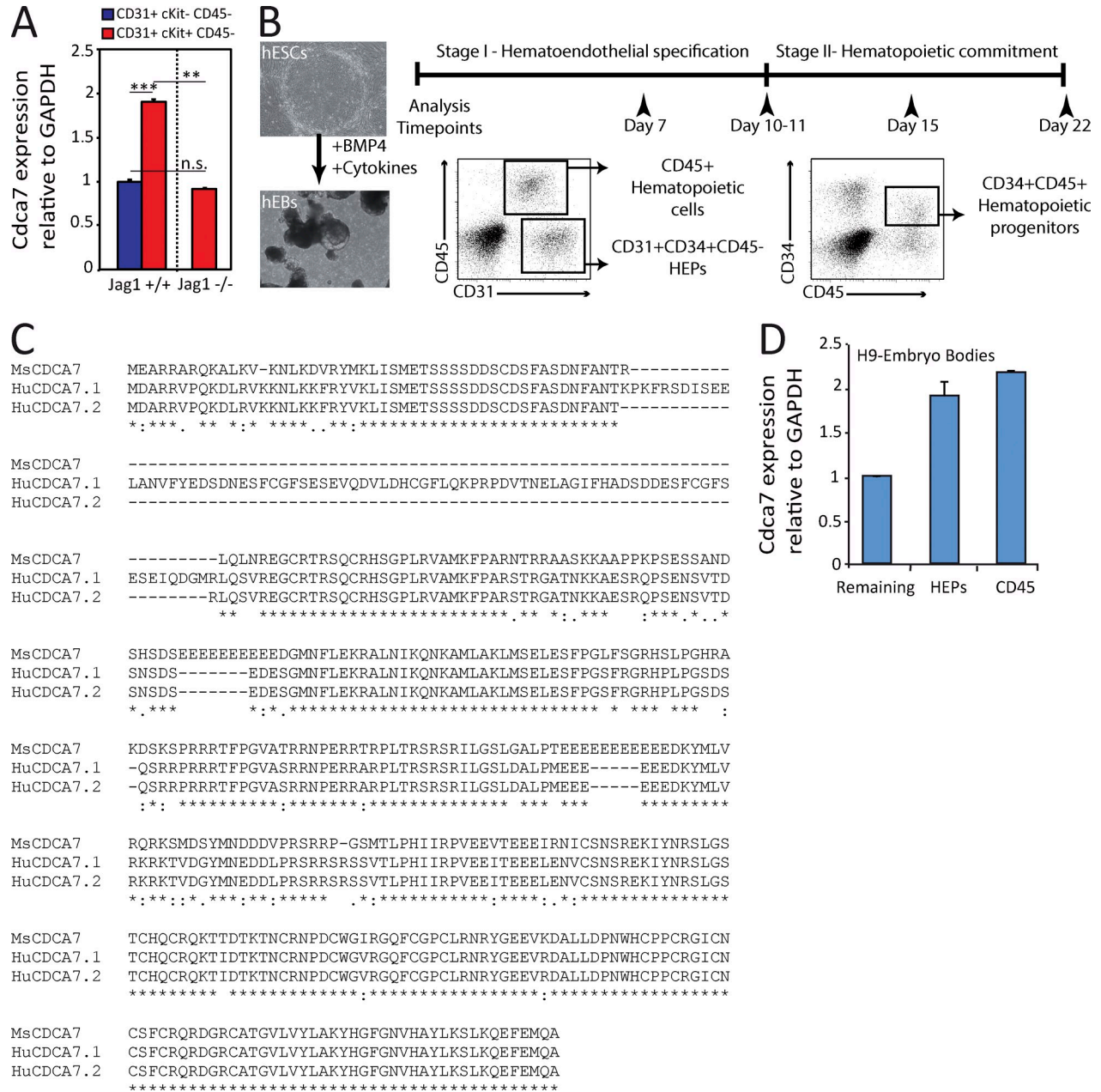


Figure S2. Cdc7 is expressed in human and mouse hematopoietic progenitors. This figure is related to Fig. 3. (A) Cdc7 expression from sorted CD31+cKit-CD45- and CD31+Kit+CD45- populations derived from E10.5 *Jag1*^{+/+} and *Jag1*^{-/-} dissected AGMs. (B) Experimental design depicting hESC differentiation toward blood in EB system. (C) Clustal alignment to compare the mouse *Cdc7* with its human homologue variants. Asterisks indicate positions for fully conserved residues; colons indicate conservation between groups of strongly similar properties, scoring >0.5 in the Gonnet PAM 250 matrix; and periods indicate conservation between groups of weakly similar properties, scoring ≤0.5 in the Gonnet PAM 250 matrix. (C and D) *Cdc7v2* in sorted subpopulations (D) was analyzed by qPCR. (A and D) Error bars represent the SD (**, P < 0.01; ***, P < 0.001; n.s., not significant).

Table S1, included as a separate PDF file, shows Chipper- and iChip-identified RBPj target genes.

Table S2. Mouse expression RT-PCR primers

Name	Forward	Reverse	Used in
Cdca7	5'-ATGATGTGCCCAAGTCGGAG-3'	5'-GCAGTTGGTTTTGGTGTCACTGG-3'	Fig. 2, B-D
Wasf1	5'-TGTGTAACCAACATTTCCCTGGC-3'	5'-CTAACAGACAATCGGTCCACGC-3'	Fig. 2, B-D
Ect2	5'-ACGACAGCGTGTACCATCTCC-3'	5'-CCTGCCGCATTTCTTCATCAAC-3'	Fig. 2, B-D
Hes1	5'-CGGCATTCCAAGCTAGAGAAGG-3'	5'-GGTAGGTCATGGCGTTGATCTG-3'	Fig. 2, B-D
Gata2	5'-ACACACCACCCGATACCCACC-3'	5'-CCACAGGCGTTGCACACAGG-3'	Fig. 2 C
Dll4	5'-AAGGTGCCACTTCGGTTACAC-3'	5'-AGATGCCACAGGAGCTACAG-3'	Fig. 2 C

Table S3. Human expression RT-PCR primers

Name	Forward	Reverse	Used in
Cdca7 v.2	5'-GATCTGGGCACCCGCCACCA-3'	5'-TGAAGTGCAGCCTCGTGTTC-3'	Fig. 3, H and I

Table S4. Promoter mouse primers

Name	Forward	Reverse	Used in
Cdca7 (-592/-423)	5'-CCTTCGGAGAGGCTTTACTCAAC-3'	5'-AGAACAGAACGGGATACCACC-3'	Fig. 2, A and B
Ect2	5'-AACCTCCTTTTGATAGGCTGGAAC-3'	5'-CGGATTTGAAACACACTACAACC-3'	Fig. 2, A and B
Hes1	5'-GCCGCCAGACCTTGTGCCTA-3'	5'-TCCAGATCCTGTGTGATCCGC-3'	Fig. 2, A and B
Wasf1	5'-GGGAAATGTAGTTTGGAGCGAGG-3'	5'-TCGGGAATGAGGGAAGATGAC-3'	Fig. 2, A and B
Gnai1	5'-TGTAGGCTTAGGTAAAGAACCGTGG-3'	5'-AAGGGAGGAAGTGAGCATTGGC-3'	Fig. 2 A
Gna12	5'-GAATGACCCTTGTTCATGCTG-3'	5'-TTATCCTTCTTGACCCGTCTCCC-3'	Fig. 2 A
Fbxl19	5'-CTTGTTAGTCATTCTTCCCCTCC-3'	5'-CCACCTTTACTTTCCAGGACGAG-3'	Fig. 2 A
R28S	5'-GAGCCTAGAGATGGGCTGTG-3'	5'-CTGGGACATAGTGGGTGCTT-3'	Fig. 2 A
Cdca7 (-393/-166)	5'-GCCAAAGTGTGAACGCAGTA-3'	5'-GCGGTTCTCGTGGTTGTAAT-3'	Fig. 3, B-D
Cdca7 (-2,513/-2,316)	5'-TTCTGCATGCTAAGGGCTTT-3'	5'-CTTGCTTCTGTTCCGTCA-3'	Fig. 3, B-D
Cdca7 (-4,244/-4,016)	5'-CGTTTCCGTTGATACCGAGT-3'	5'-TGACAAATGGAAACCCAGTG-3'	Fig. 3, B-D
Cdca7 (-7,949/-7,706)	5'-TGCTTTATGCAGTTGGATGC-3'	5'-TGGTTTGCAGTTCATTCCAG-3'	Fig. 3 B
Cdca7 (-8,899/-9,087)	5'-TTGCTTGGGTTCAATAAG-3'	5'-TTTAGGGCTGCAGGAAAGAA-3'	Fig. 3 B