

# Supplementary Figure 4

**a**

```

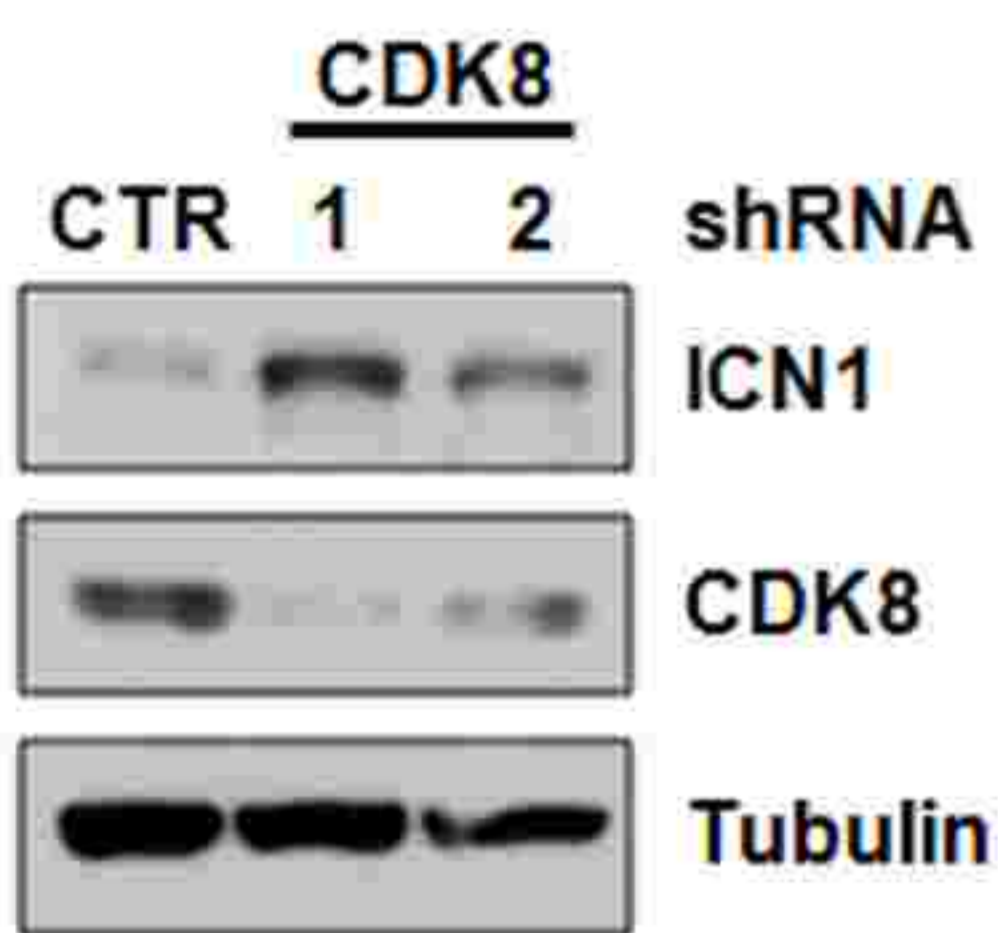
CDK8 MDYDFKVKLSS ERERVEDLFEYEGCKVGRGTYGHVYKARRKDGKDDKDYALKQI ---- EGTGISMSACREIALRELKHPNVISLQKVFLSHADRVWLLFDYAEHDLWHI IKFHRRAS KANKKPVQLPRGMV 128
CDK19 MDYDFKAKLAA ERERVEDLFEYEGCKVGRGTYGHVYKARRKDGKDEKEYALKQI ---- EGTGISMSACREIALRELKHPNVIALQKVFLSHSDRVWLLFDYAEHDLWHI IKFHRRAS KANKKPMQLPRSMV 128
CDK3 MDMFQKVE ----- KIGEGTYGVVYKAKNRETG --QLVALKKRLDL EMEGVPSTAIRERISL KRELKHPNIVRLDQV -- HNERKLYLVEEFLSQDLKKYMDSTPGS ----- ELPHLI 104

CDK8 KSLLYQILDG IHYLHANWVLRDLKPAIILVMGEGPERGRVKIADMGFARLFNSPLKPLADLDPVVVTFWYRAPELLGARHYTKAIDIWAIGCIFAELLTSEPIFHCRQEDIKTSNPFHHDQLDRIFNVMG 260
CDK19 KSLLYQILDG IHYLHANWVLRDLKPAIILVMGEGPERGRVKIADMGFARLFNSPLKPLADLDPVVVTFWYRAPELLGARHYTKAIDIWAIGCIFAELLTSEPIFHCRQEDIKTSNPFHHDQLDRIFNVMG 260
CDK3 KSYLFQLQGVSFCHSHRVIHRDLKPNLII ---- NELGAIKLAFLARAGVPLRITYTH --- EAVLWYRAPELLGSKFYTAVDIWSIGCIFAEMVTRKALFPGDSE ----- IDQLFRIFRMLG 220

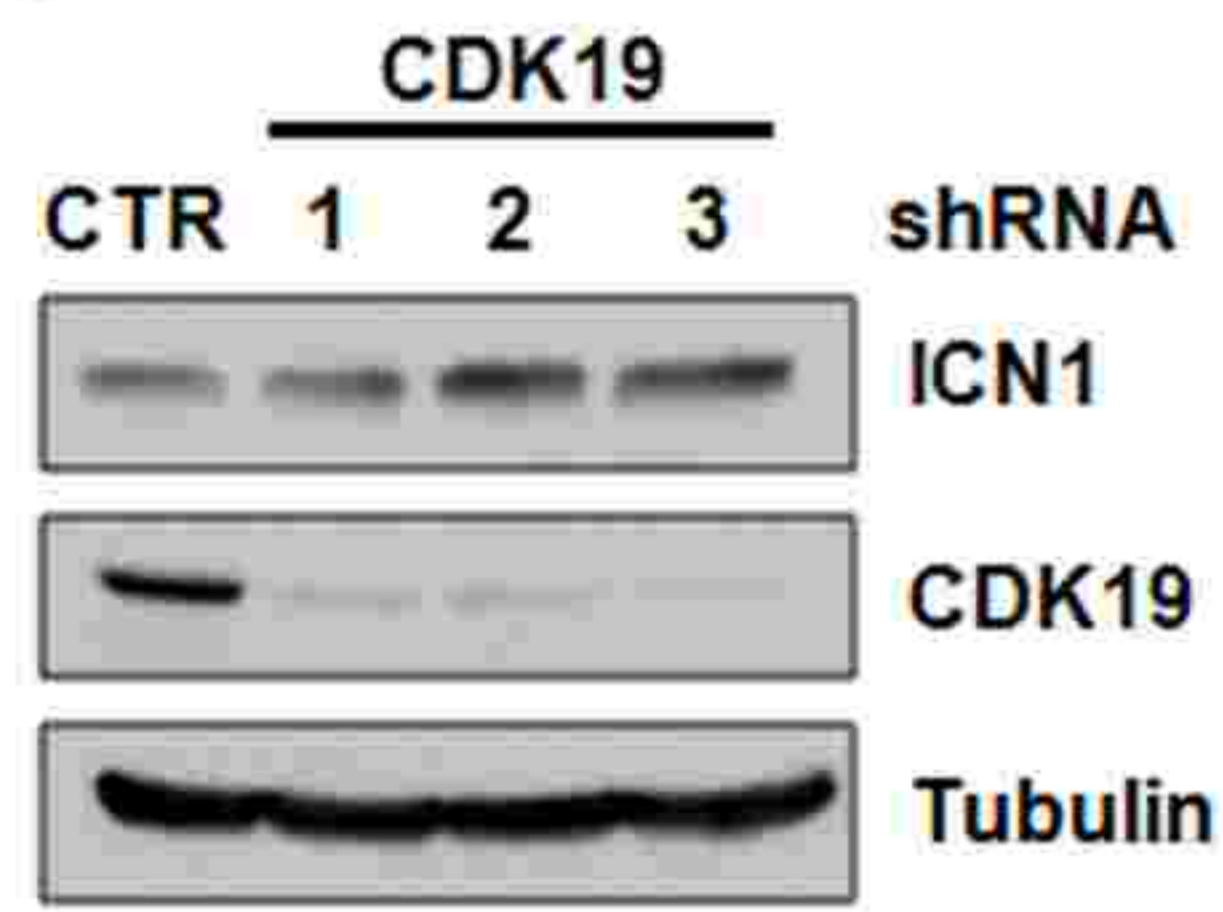
CDK8 FPAADKDWEDIKMPPEHSTLMKDFRRNTYTNCSLIKYMEK --HKVKPDSKAFHLQKLLTMDPIKRITSEQAMQDPYFLE -DPLPTSDFVAGCQIPYPKREFLTEEEDDDKGDKNQOQ --- 375
CDK19 FPAADKDWEDIRKMPPEYPTLQKDFRRNTYTNCSLIKYMEK --HKVKPDSKAFHLQKLLTMDPIKRITSEQALQDPYFQE -DPLPTLDYFAGCQIPYPKREFLTEDDPEEKGDKNQOQQNQHQOQTAPPQQA 389
CDK3 TISEDTWPGVTQLPDYKGSFPAKWR ----- KGLLEIVPNLEFEGR --DLMQLLQYDPSQRLAKTALAHYFSSPEISPAAR ----- 295

CDK8 ----- OQGNHNTNGT ----- GHPGNQDSSHTDGPPLKVVVVVPTTSSGGLIMTSDYQRSNPHAAAYPNPGPSTSDPQSSSMGYSATSSQPPQY -- SHQTHRY 464
CDK19 AAPPQAPPQONSTQNGTAGGAGAGVGGTGAGLQHSQDSSLNQPVPKPKPLGSPGANSGGPVMPSDYQHSNRLNYQSSVQGSQSSQSTLGYSSSQSSSYHPSHQAHRY 502
CDK3 ----- QY --VLDREH 305
    
```

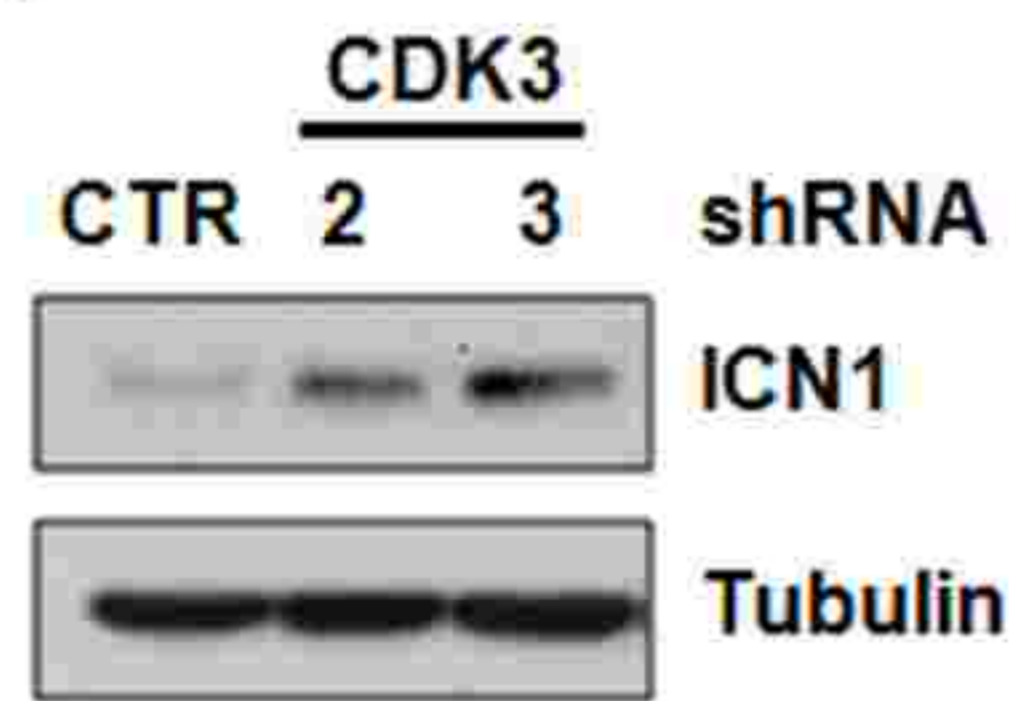
**b**



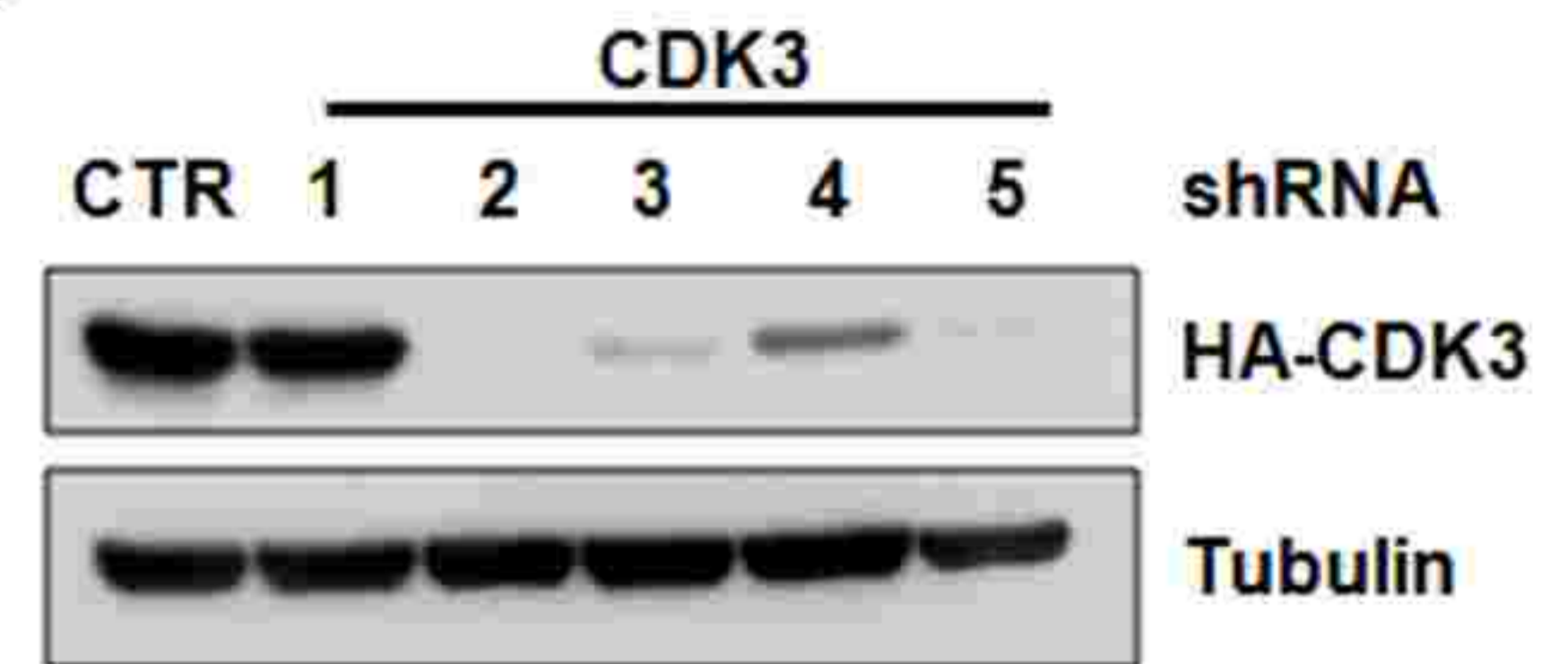
**c**



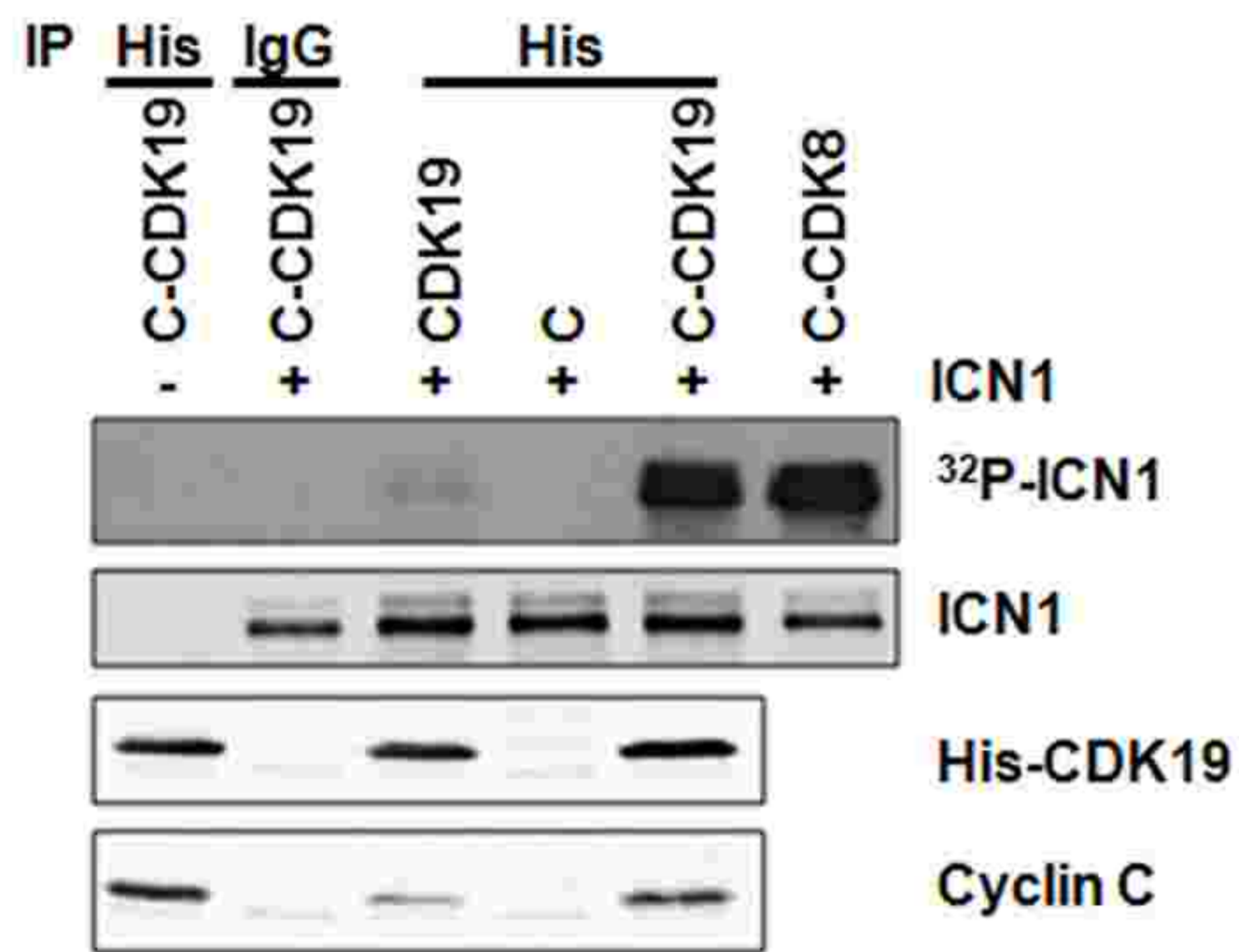
**d**



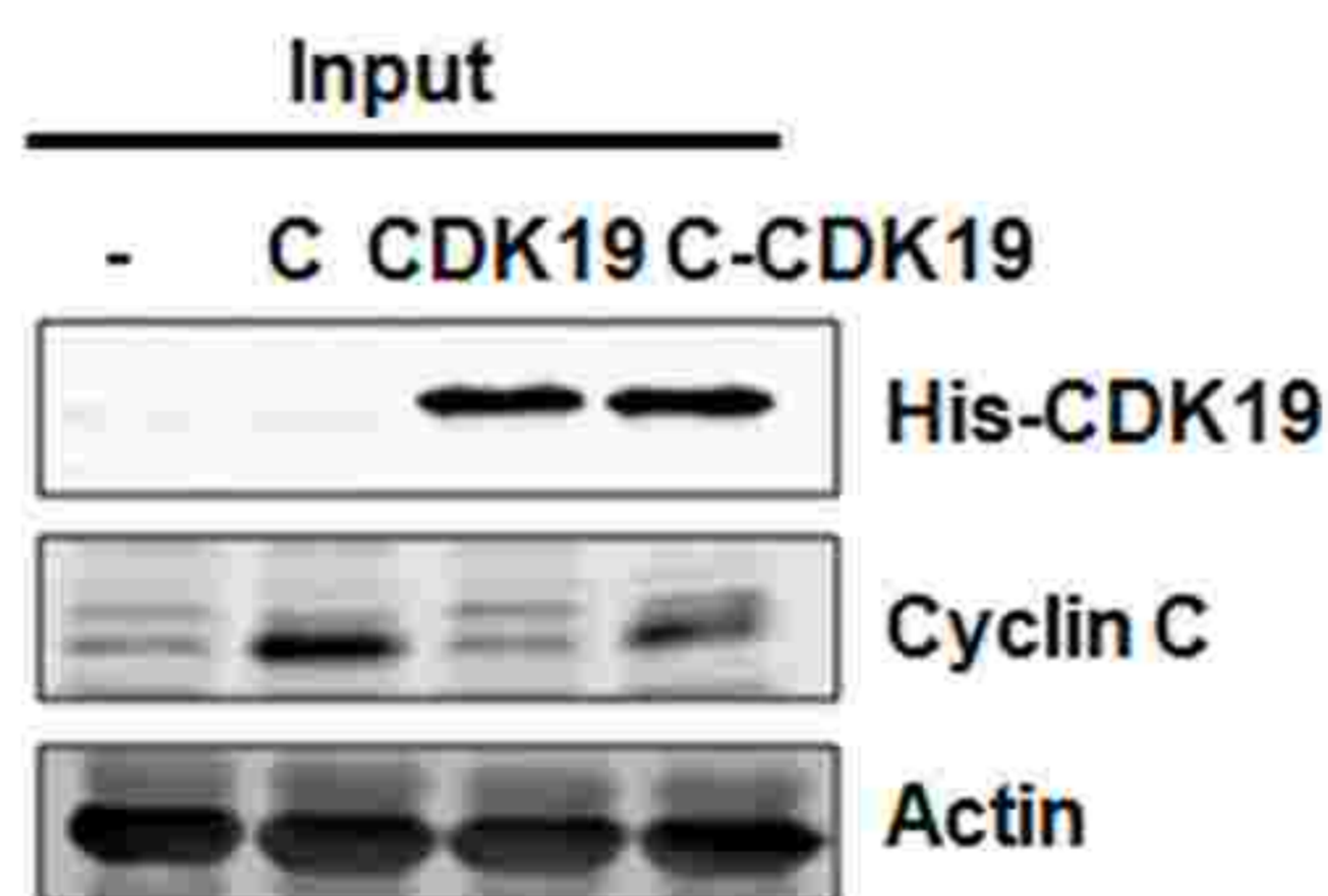
**e**



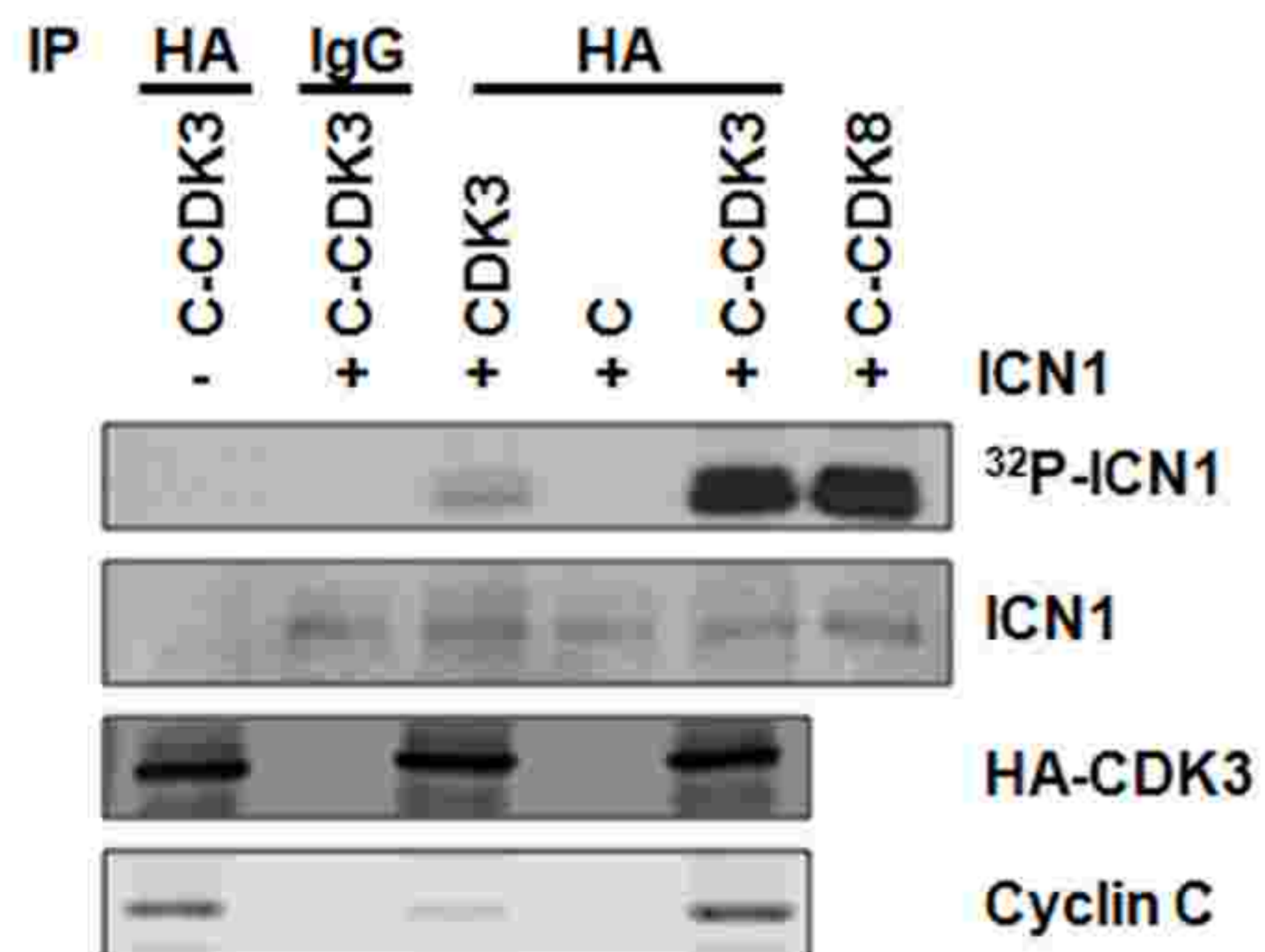
**f**



**g**



**h**



**i**

