

# gDNA

# unfixed cells - manual cell isolation

# fixed cells - CellSearch/DEPArray workflow

Cell #1

Cell #2

Cell #3

Cell Pool

Cell #1

Cell #2

Cell #3

Cell Pool

DLRS 0.17

DLRS 0.77

DLRS 0.76

DLRS 0.66

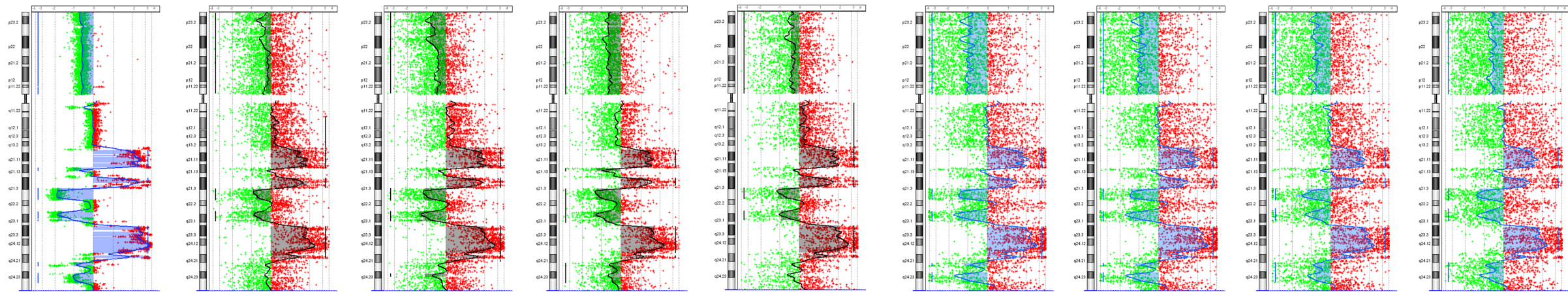
DLRS 0.91

DLRS 1.11

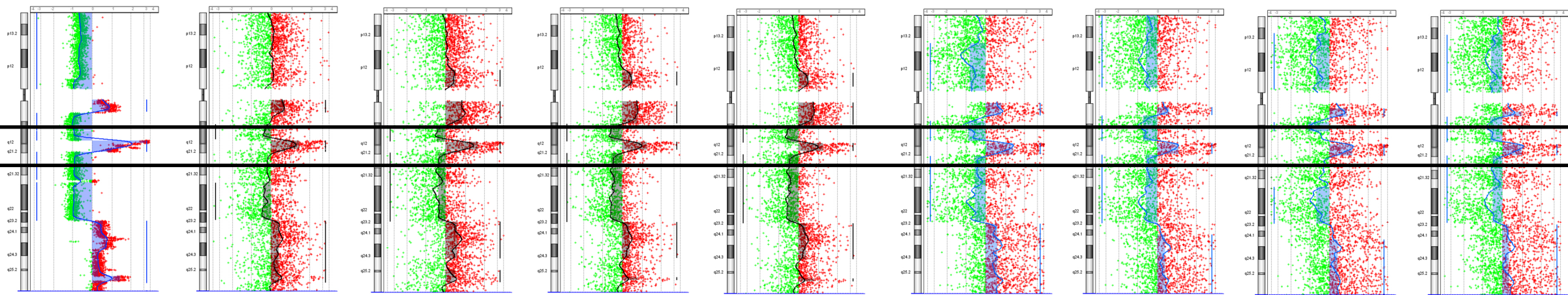
DLRS 1.10

DLRS 1.15

DLRS 1.21



Chromosome 8 profiles of SKBR3 breast cancer cell line



Chromosome 17 profiles of SKBR3 breast cancer cell line (*ERBB2* region highlighted)