

SUPPLEMENTARY DATA

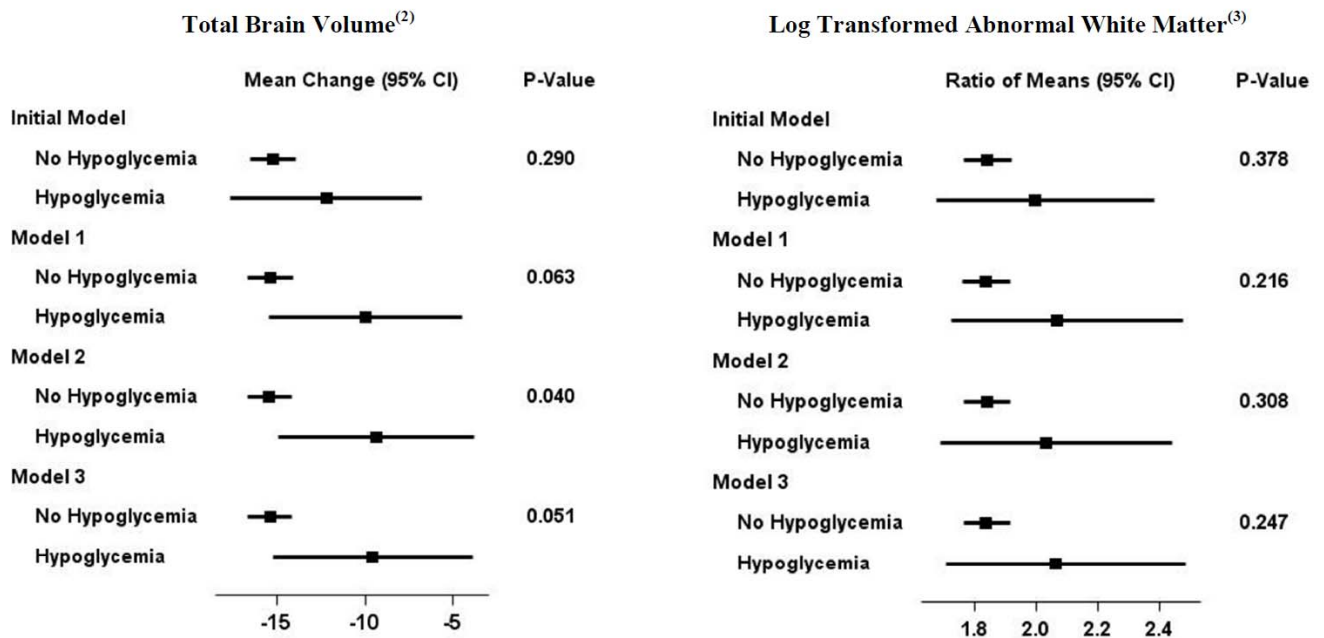
Supplementary Table 1. Comparison of baseline characteristics between participants with and without M40 MRI

Baseline Characteristics	Total* (N=614)	M40 MRI Data		p-value
		M40 Missing (N=111)*	M40 Present (n=503)*	
Age	62.37 +/- 5.74	63.22 +/- 6.09	62.18 ± 5.65	0.0856
Gender (female)	273 (44.46%)	40 (36.04%)	233 (46.32)	0.0484
Race				0.6400
Non-Hispanic White	419 (68.4%)	78 (70.9%)	341 (67.8)	
African-American	103 (16.8%)	14 (12.7%)	89 (17.7)	
Hispanic	39 (6.4%)	8 (7.3%)	31 (6.2)	
Other	52 (8.5%)	10 (9.1%)	42 (8.3)	
Education level				0.1611
Less than HS	62 (10.1%)	16 (14.5%)	46 (9.1)	
High School Grad	148 (24.1%)	26 (23.6%)	122 (24.3)	
Some College	209 (34.1%)	41 (37.3%)	168 (33.4)	
College Grad or More	194 (31.6%)	27 (24.5%)	167 (33.2)	
Clinical Center Network				0.0205
A	274 (44.7%)	38 (34.5%)	236 (46.9%)	
B	98 (16.0%)	27 (24.5%)	71 (14.1%)	
C	86 (14.0%)	18 (16.4%)	68 (13.5%)	
D	155 (25.3%)	27 (24.5%)	128 (25.4%)	
DSST Cognition Score	53.41 +/- 16.09	47.63 +/- 17.34	54.67 ± 15.54	<.0001
BMI (continuous)	32.64 +/- 5.11	32.84 +/- 4.98	32.59 ± 5.14	0.6428
<25	36 (5.9%)	5 (4.5%)	31 (6.2%)	0.4857
=>25 to <30	166 (27.1%)	26 (23.6%)	140 (27.8%)	
30+	411 (67.0%)	79 (71.8%)	332 (66.0%)	
History of Cardiovascular Disease	160 (26.06%)	32 (28.83%)	128 (25.45%)	0.4626
Systolic blood pressure	134.8 +/- 17.91	135.5 +/- 18.24	134.6 ± 17.85	0.6683
Treatment assignment				
Glucose Control (Intensive)	293 (47.72%)	63 (56.76%)	230 (45.73)	0.0352
BP Control (Intensive)	193 (31.43%)	40 (36.04%)	153 (30.42)	0.2485
Lipid Control (Fibrate)	115 (18.73%)	26 (23.42%)	89 (17.69)	0.1614
Severity of diabetes				
Duration of diabetes	9.94 +/- 7.18	10.14 +/- 7.68	9.89 +/- 7.08	0.7470
Haemoglobin A1C level, %	8.18 +/- 1.00	8.39 +/- 1.27	8.14 +/- 0.93	0.0158
Glucose level, mg/dl	172.9 +/- 54.17	176.1 +/- 63.29	172.2 +/- 52.05	0.5034
Amputation	7 (1.14%)	1 (0.90%)	6 (1.19%)	0.7931
Neuropathy Score	0.44 +/- 0.50	0.53 +/- 0.50	0.42 +/- 0.49	0.0490
Visual Acuity	75.80 +/- 10.24	72.35 +/- 12.69	76.54 +/- 9.48	0.0001
Serum Creatinine	0.89 +/- 0.20	0.91 +/- 0.20	0.88 +/- 0.20	0.2603
LDL	101.9 +/- 33.43	105.4 +/- 38.17	101.2 +/- 32.32	0.2415
HDL	43.72 +/- 12.22	43.13 +/- 13.18	43.84 +/- 12.02	0.5815
Any hypertension med use (baseline)	520 (84.69%)	95 (85.59%)	425 (84.49%)	0.7723
Any statin use (baseline)	422 (68.73%)	59 (53.15%)	363 (72.17%)	<.0001
Any insulin use (baseline)	197 (32.08%)	43 (38.74%)	154 (30.62%)	0.0971
Basal Insulin	155 (25.24%)	35 (31.53%)	120 (23.86%)	0.0921
Bolus Insulin	75 (12.21%)	16 (14.41%)	59 (11.73%)	0.4343
Premixed Insulin	43 (7.00%)	9 (8.11%)	34 (6.76%)	0.6143

* Results are presented as N (%) or mean ± SD

SUPPLEMENTARY DATA

Supplementary Figure 1. Results from Four Separate Models Adjusting for Different Covariates⁽¹⁾



- (1) The initial model controlled for only the ICV and randomization factors; Model 1 added demographic, laboratory and medication use covariates to the covariates in the initial model; Model 2 added severity of diabetes to the covariates in Model 1; Model 3 added insulin use to the factors in Model 2.
- (2) Results represent adjusted means and confidence intervals obtained from ANCOVA models.
- (3) Because a log transformation was required, results represent the ratio of the geometric mean at follow-up to the geometric mean at baseline.