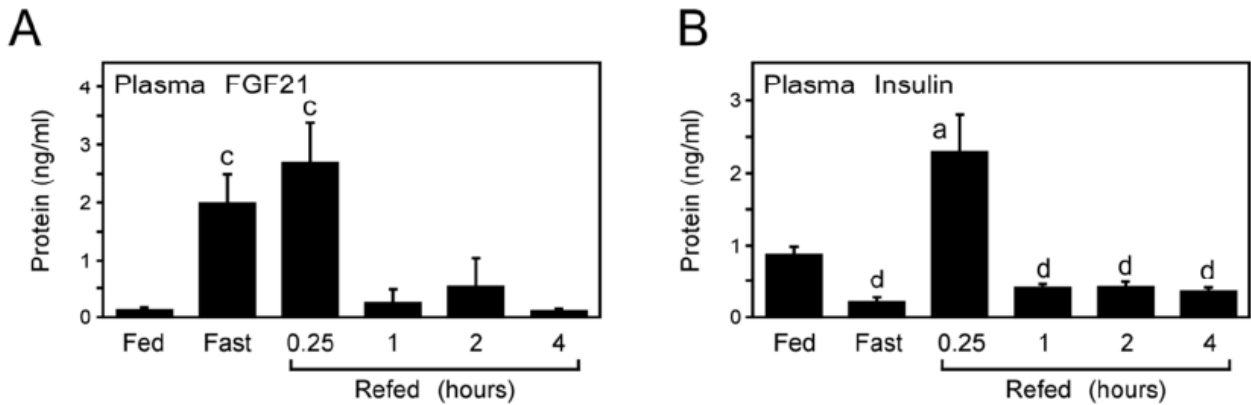


SUPPLEMENTARY DATA

**Supplementary Figure 1.** Levels of (A) plasma FGF21 protein and (B) plasma insulin from 12-14 week old wild-type C57Bl/6 male mice subjected to different feeding paradigms: mice were either *ad libitum* fed chow, fasted 24 hours (hr), or fasted 24 hrs then refed for 15 minutes, 1 hr, 2 hr, or 4 hr via oral gavage (n = 4-5/group). Data are presented as mean +/- SEM. Different lowercase letters represent statistical significance (a,  $P < 0.05$ ; c,  $P < 0.005$ ; d,  $P < 0.001$ ).



**Supplementary Figure 2.** (A-F) FGF21<sup>fl/fl</sup>, FGF21 LivKO, and FGF21 AdipoKO mice were fed a high fat diet for 10 weeks (n = 8-9/group). FGF21<sup>fl/fl</sup> control mice were compared only to their knockout littermates. (A-B) Body weight curves, (C-D) percent body fat, and (E-F) percent lean mass in the indicated mice. Body composition was determined using a Bruker Minispec NMR machine. (G) Liver triglycerides from the indicated mice. Data are presented as mean +/- SEM. Different lowercase letters represent statistical significance (c,  $P < 0.005$ ).

SUPPLEMENTARY DATA

