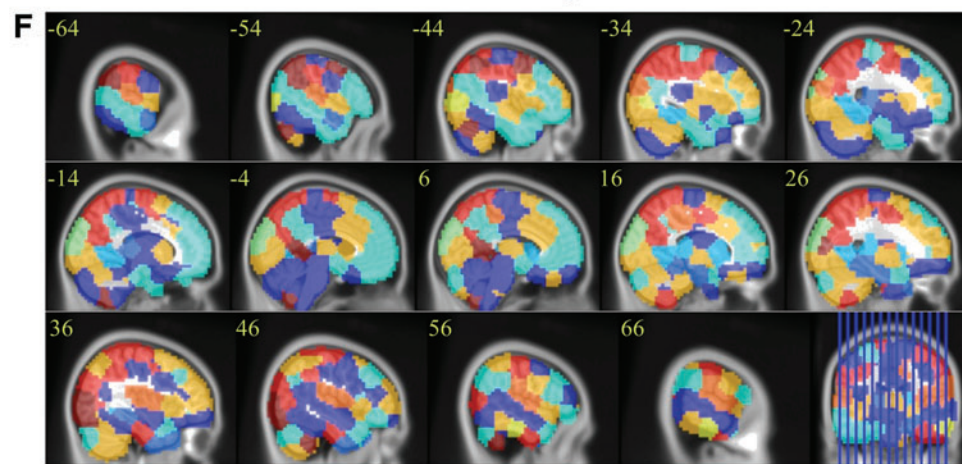
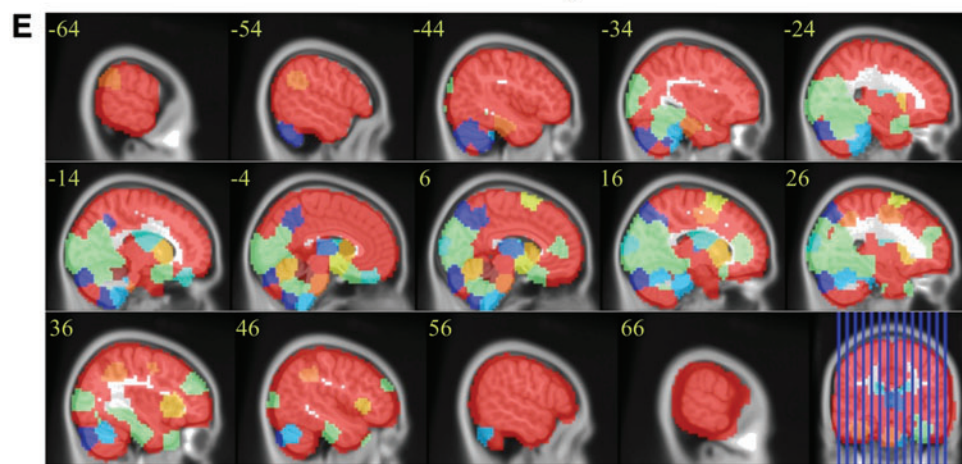
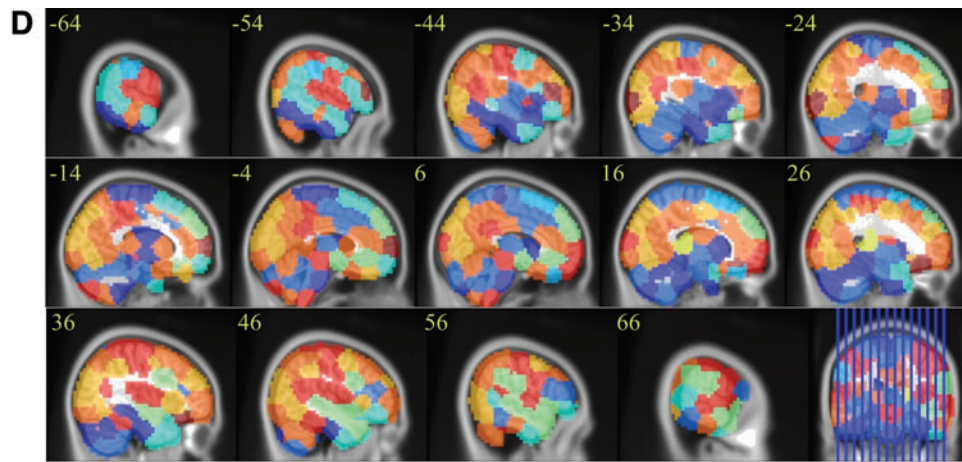
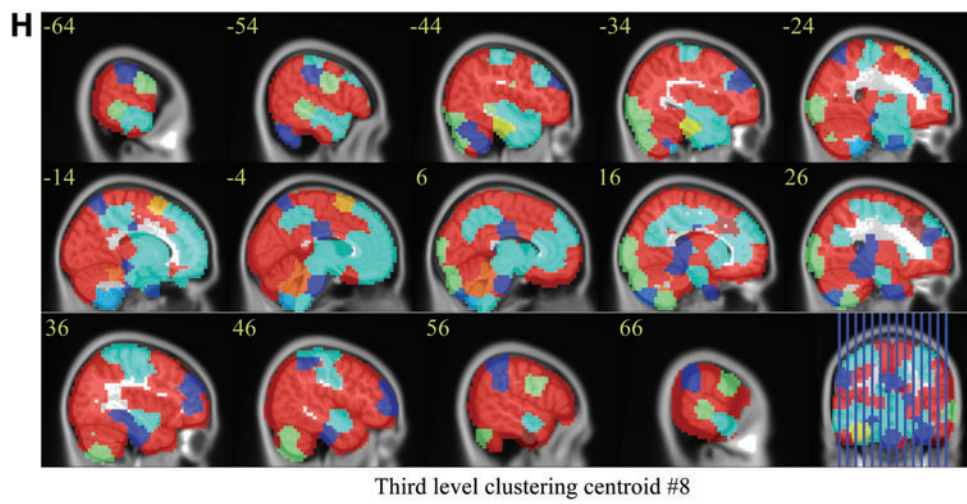
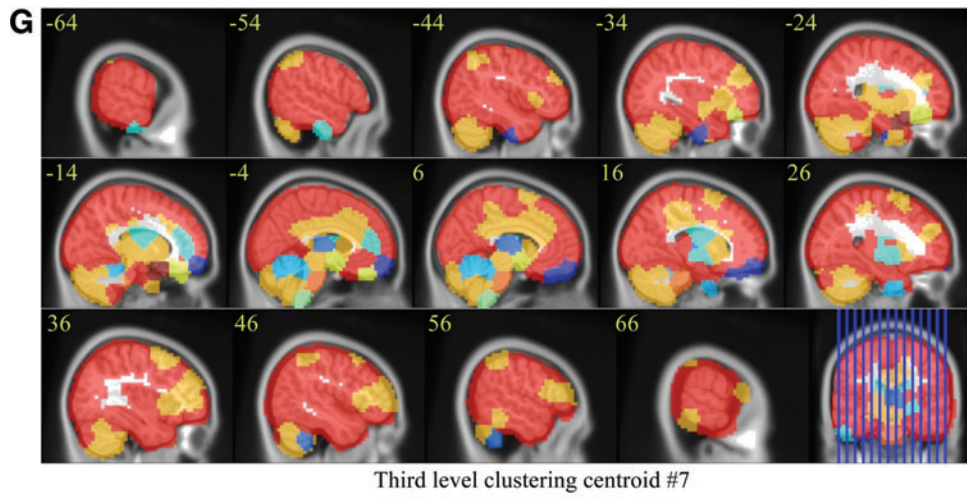


SUPPLEMENTARY FIG. S3. Third-level clustering centroids. Each subfigure shows one third-level centroid. The order of third-level centroids is the same as in Table 1 in the main article. There are a total of eight clusters with their centroids chosen as the cluster member (which is one of second-level dominating centroids) that is nearest to the theoretically calculated centroid. Each color in each subfigure represents regions connected to each other. For example, the Default Mode Network is a part of clusters #3 (aquamarine), #4 (red), #6 (aquamarine), and #8 (aquamarine). The number shown at the top left of each sagittal slice is the x coordinate (left to right) in mm. Panels (A–H) show the eight third-level clustering centroids.



SUPPLEMENTARY FIG. S3. (Continued).



SUPPLEMENTARY FIG. S3. (Continued).