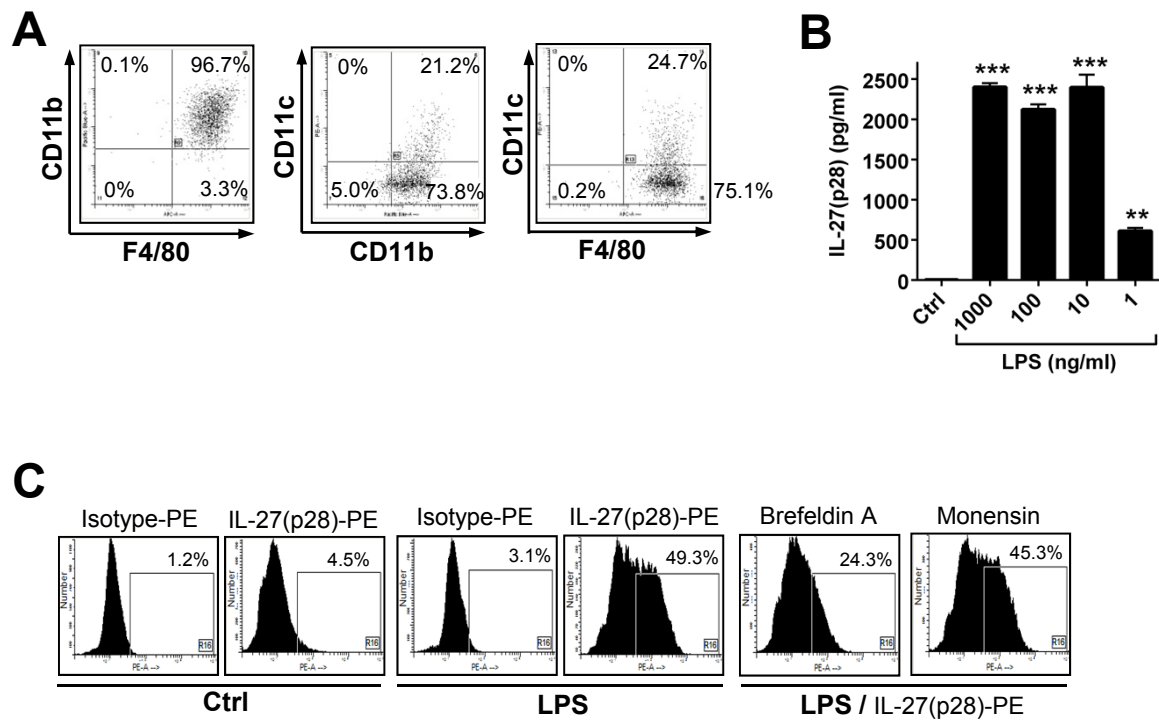


## Supplementary Figure 1



**Supplementary Figure 1. Characterization of IL-27(p28) release from macrophages.** **A.** Flow cytometry analysis of surface markers F4/80, CD11b and CD11c on BMDM from Wt mice after LPS 1  $\mu$ g/ml, 24h. **B.** Dose response studies of IL-27(p28) release from BMDM incubated with different concentrations of LPS, 8 h, ELISA. **C.** Flow cytometry staining for intracellular IL-27(p28) or with fluorochrome labeled isotype IgG in BMDM (Wt) after LPS (1  $\mu$ g/ml) for 10 h in the presence of Monensin (2  $\mu$ M). Right panel compares effectiveness of Brefeldin A (BD GolgiPlug™ 1:1000) to Monensin for intracellular IL-27(p28) detection. Ctrl denotes unstimulated macrophages. Student's t-test, \*\* P < 0.01, \*\*\* P < 0.001, error bars: s.e.m. Data are representative of two or three independent experiments.

---

**Supplementary Table 1**

---

**Primer sequences**

---

<b>Primer</b>	<b>Sequence / Cat. No.</b>
Mouse IL-27(p28) (fo)	5'-GGCCATGAGGCTGGATCTC-3', Invitrogen
Mouse IL-27(p28) (re)	5'-AACATTTGAATCCTGCAGCCA-3', Invitrogen
Mouse GAPDH (fo)	5'-TACCCCAATGTGTCCGTCGTG-3', Invitrogen
Mouse GAPDH (re)	5'-CCTTCAGTGGGCCCTCAGATGC-3', Invitrogen
Mouse SOCS3	NM_007707, #QT00100331, QuantiTect Primer Assay, Qiagen

---