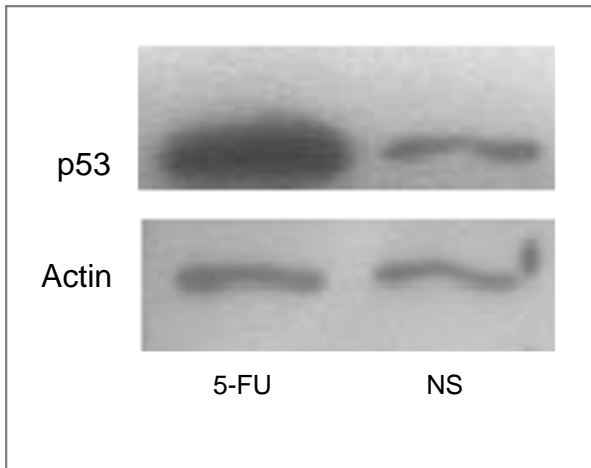


S1A



S1B

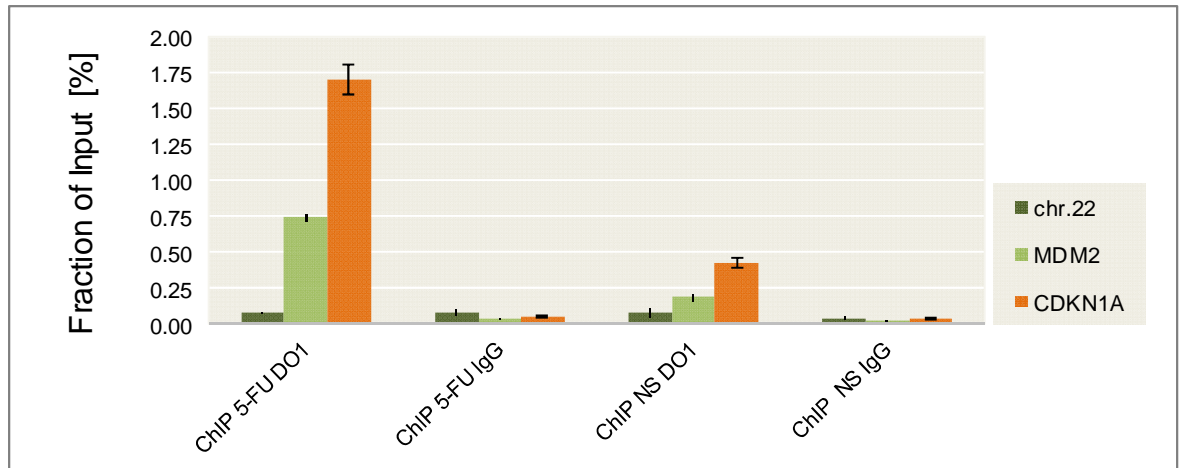


Figure S1. p53 activation in HCT116 cells after 6hrs treatment with 5FU.

S1A. Whole cell extracts from HCT116 cells, treated for 6hrs with 5-FU, were subjected to Western analysis using the p53-specific antibody DO1 (sc-126). Actin was used as a loading control.

S1B. p53 enrichment was confirmed by qPCR at the target genes *CDKN1A* and *MDM2*. *CDKN1A* site: -2,232 bp to TSS (chr6:36,752,204-36,752,224); *MDM2* site: chr12: 67,488,970-67,488,990; negative control for p53 binding: chr22:47,056,575-47,056,854. Coordinates are given in hg18.

Average enrichment is calculated as percentage of the total Input; shown are results from duplicated measurements. FU (6hrs treatment with 5-FU); NS (no stimulation); DO1 (ChIP with p53-specific DO1 antibody); IgG (mock ChIP with non-specific IgG).