

Figure S5

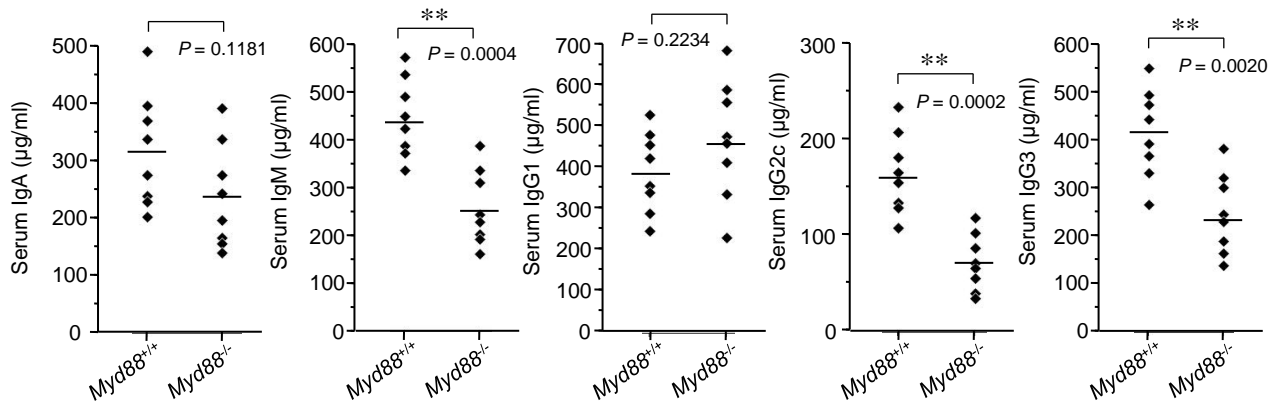


Figure S5. Effect of MyD88 deficiency on the levels of serum basal Igs.

Sera were collected from *Myd88*^{+/+} mice and *Myd88*^{-/-} mice at 10 weeks old (n=8 each) for determination of basal Ig levels by ELISA. Means of each group were shown and P values were calculated by unpaired Student's *t*-test. **, $P < 0.01$.