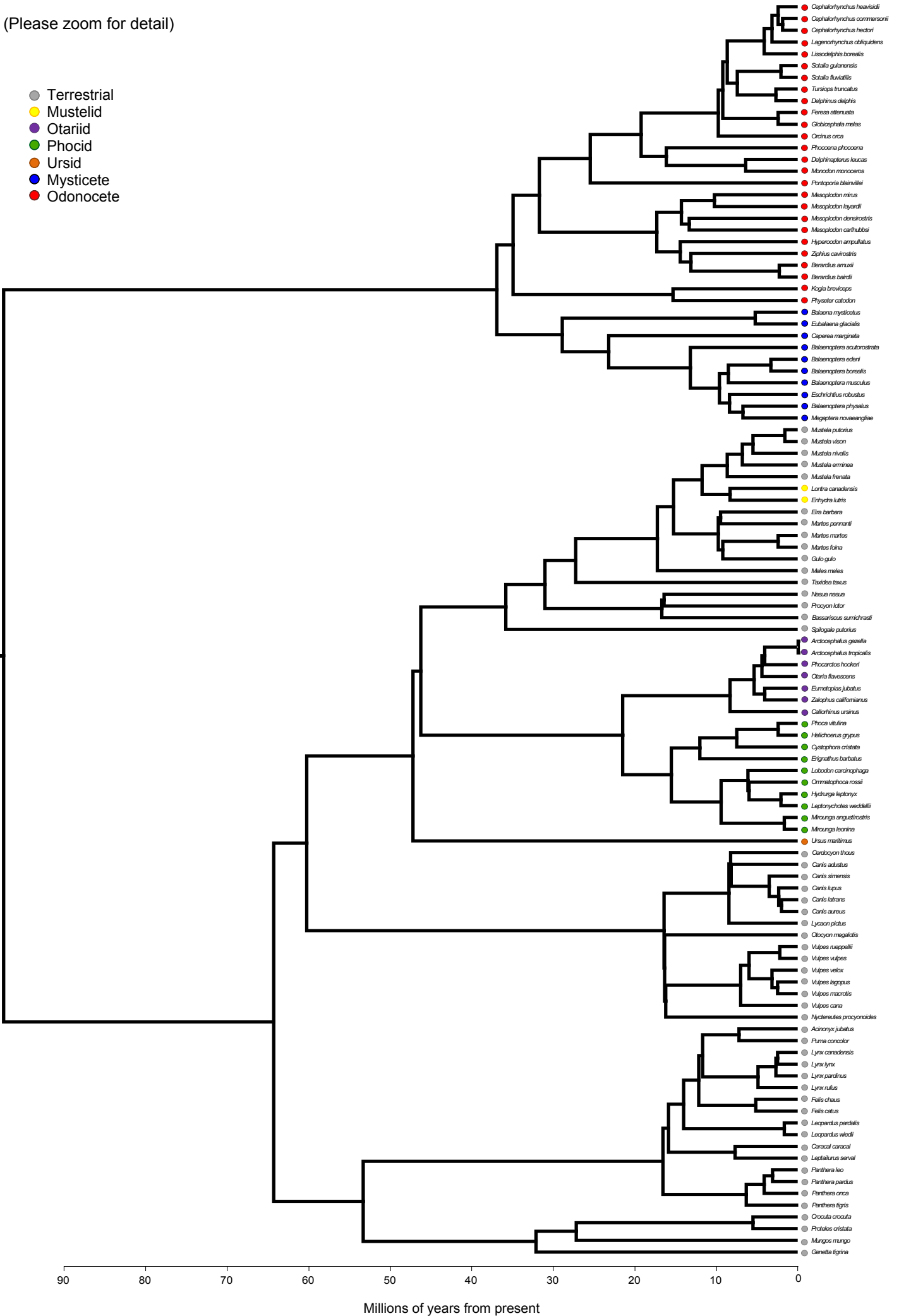
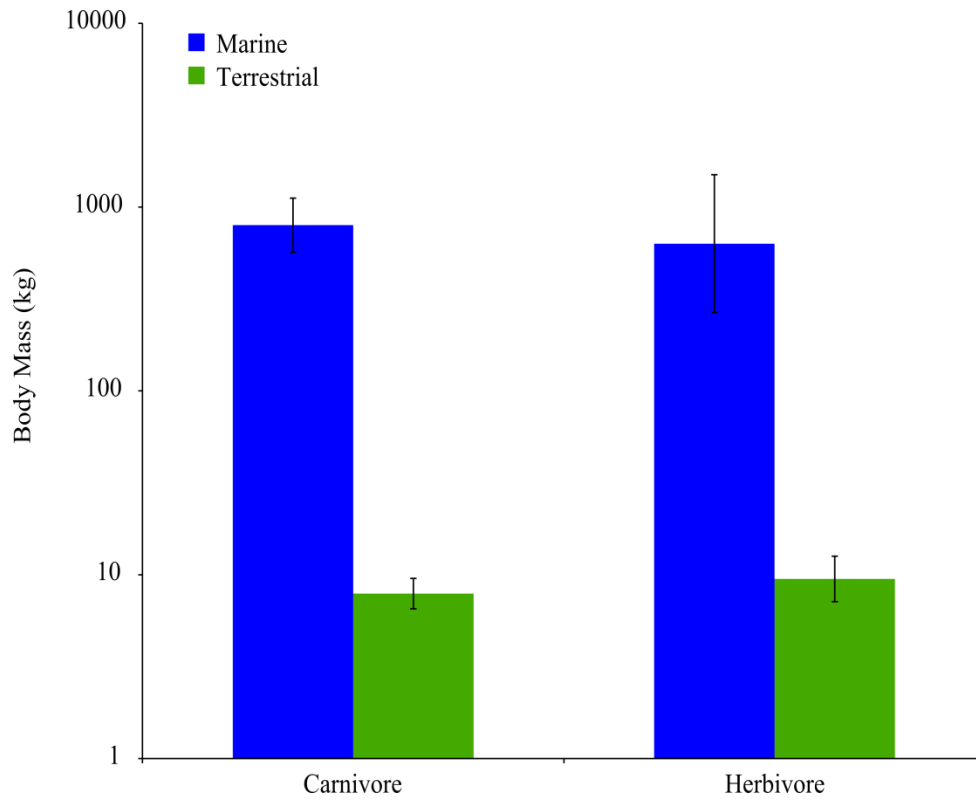


Fig. S1 Phylogeny of 107 carnivorous mammals.

(Please zoom for detail)





**Figure S2.** Log<sub>10</sub> mean body mass for mammalian carnivores and herbivores living in terrestrial and marine environments  $\pm$  S.E. Untransformed mean values for terrestrial carnivores (20kg), marine carnivores (9805kg), terrestrial herbivores (190kg) and marine herbivores (4067kg).