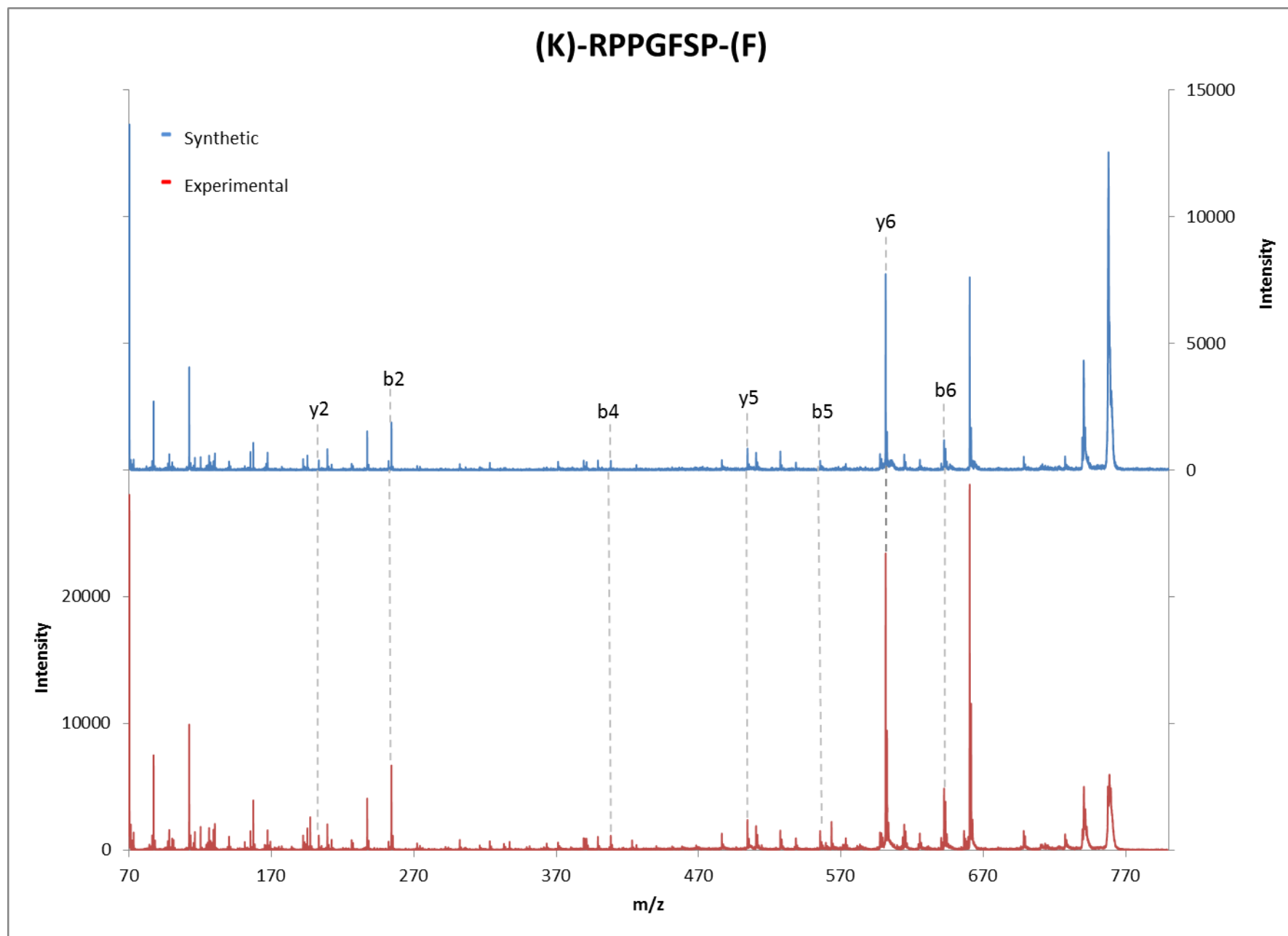
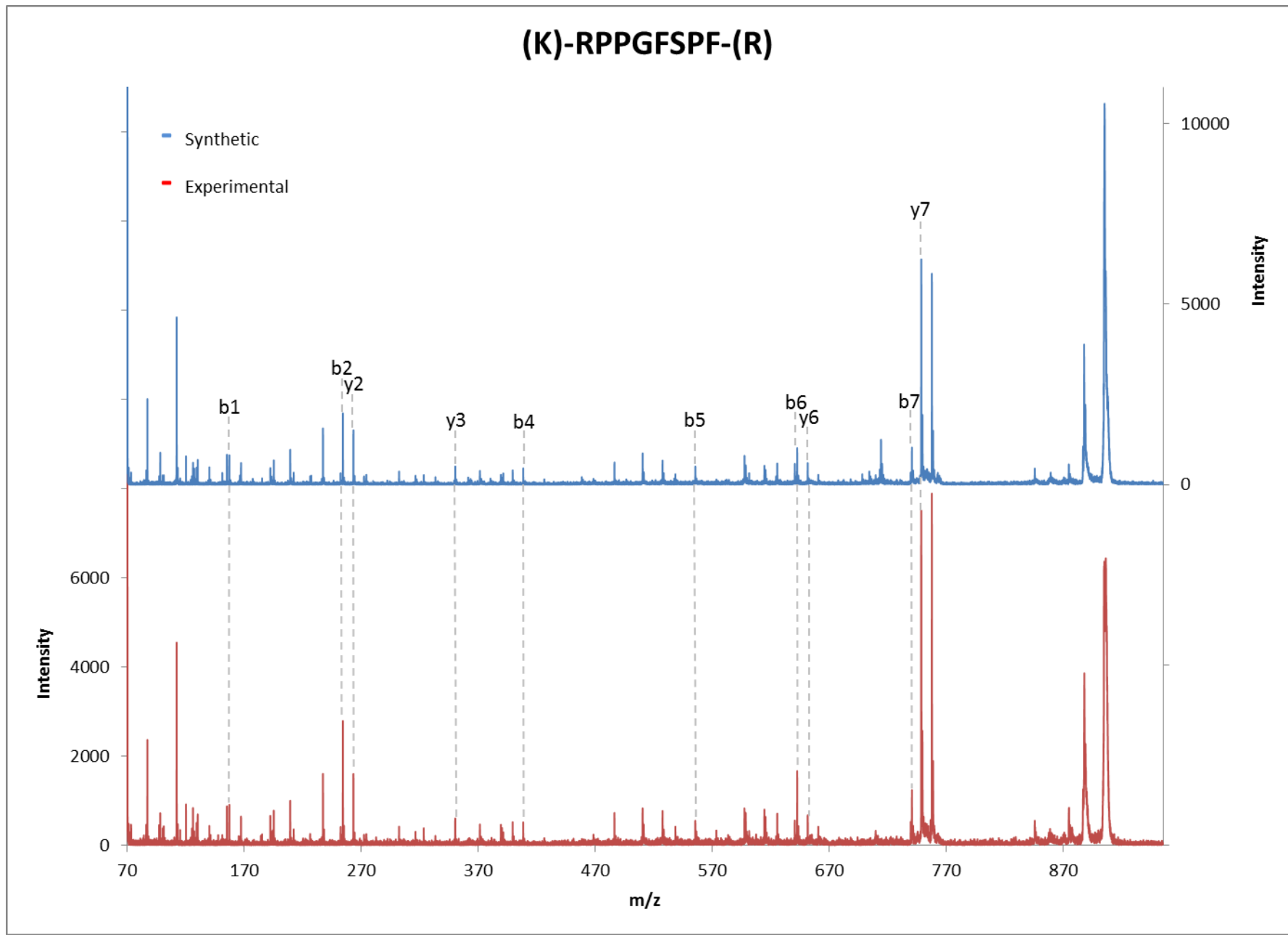
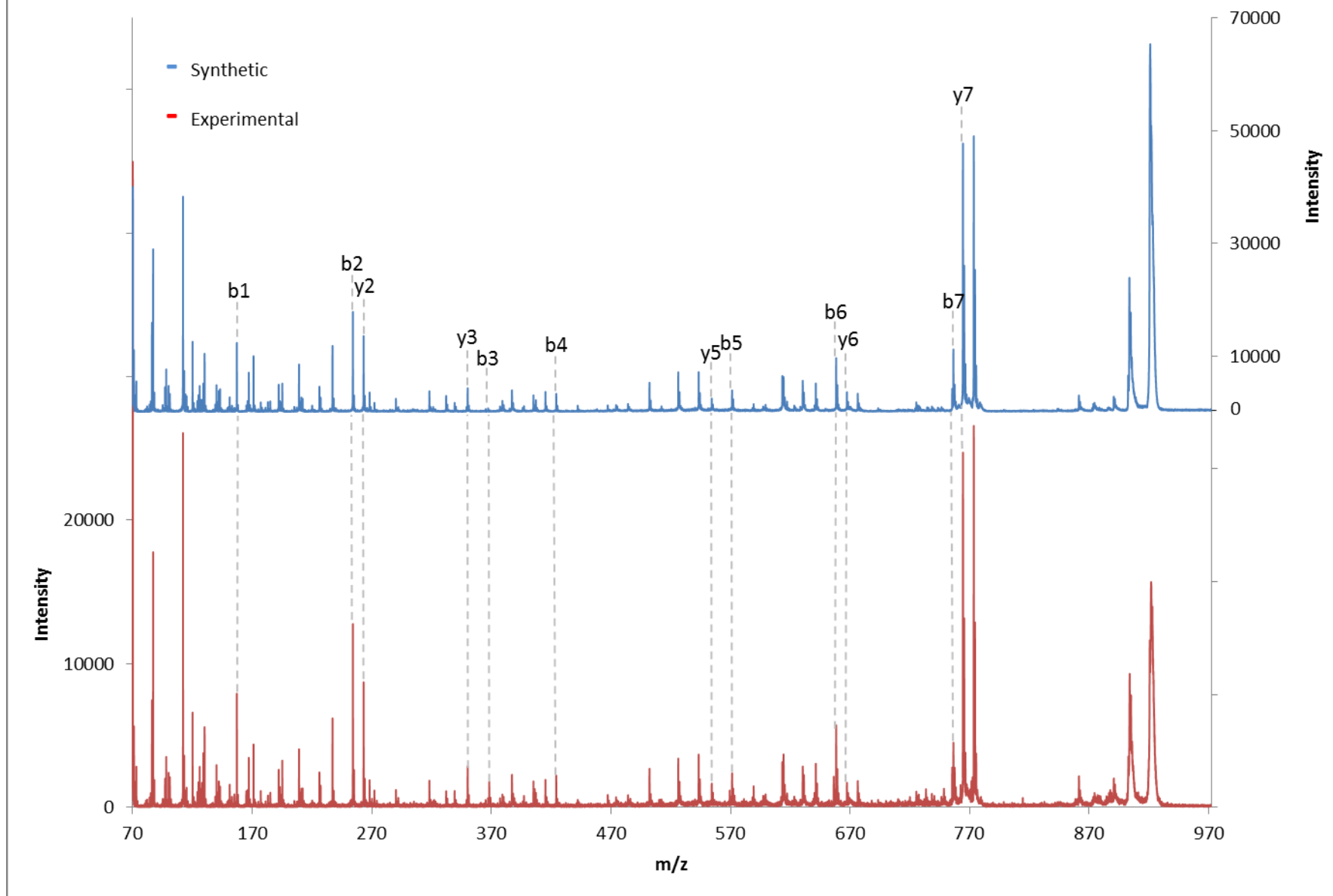
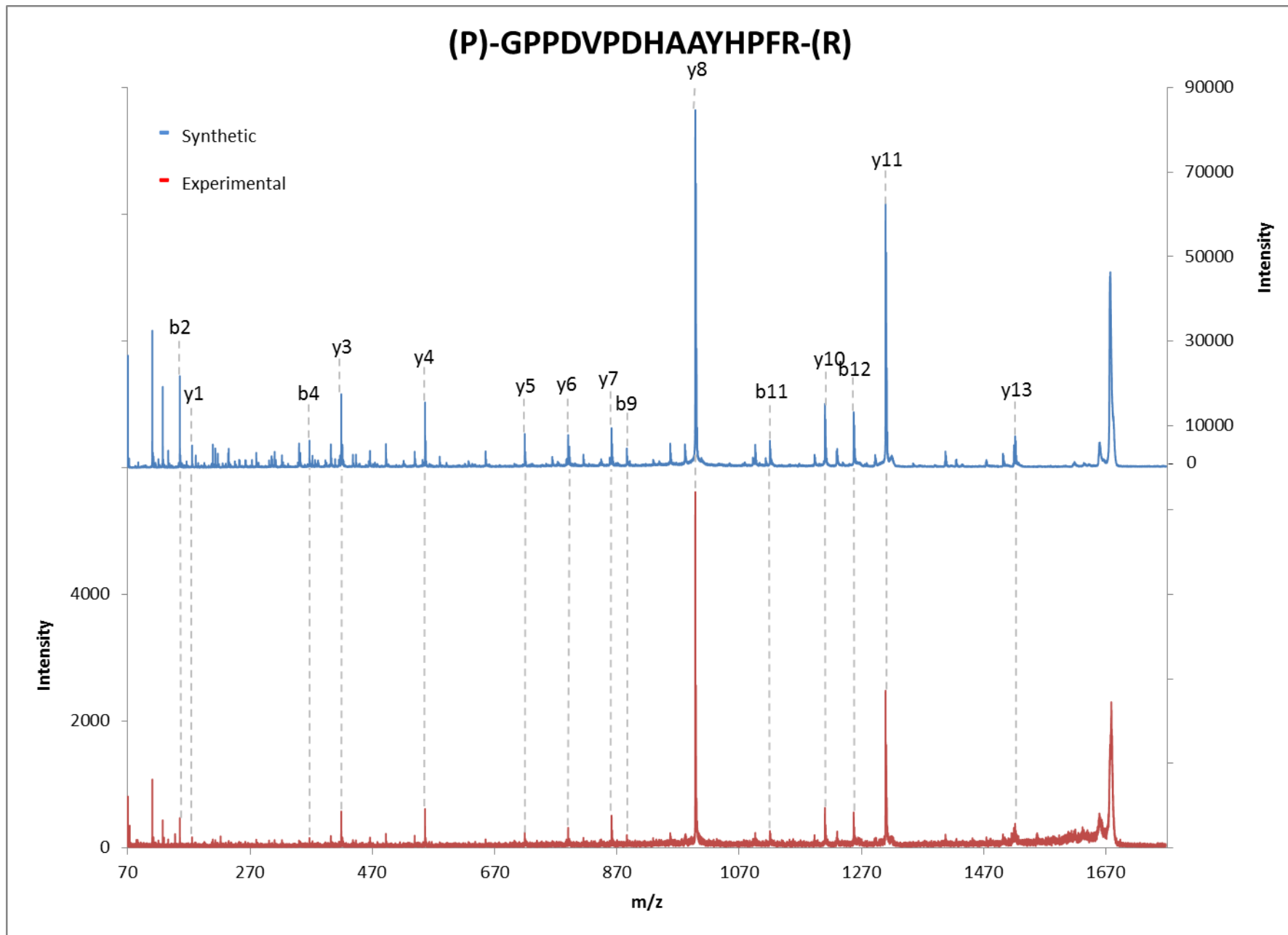


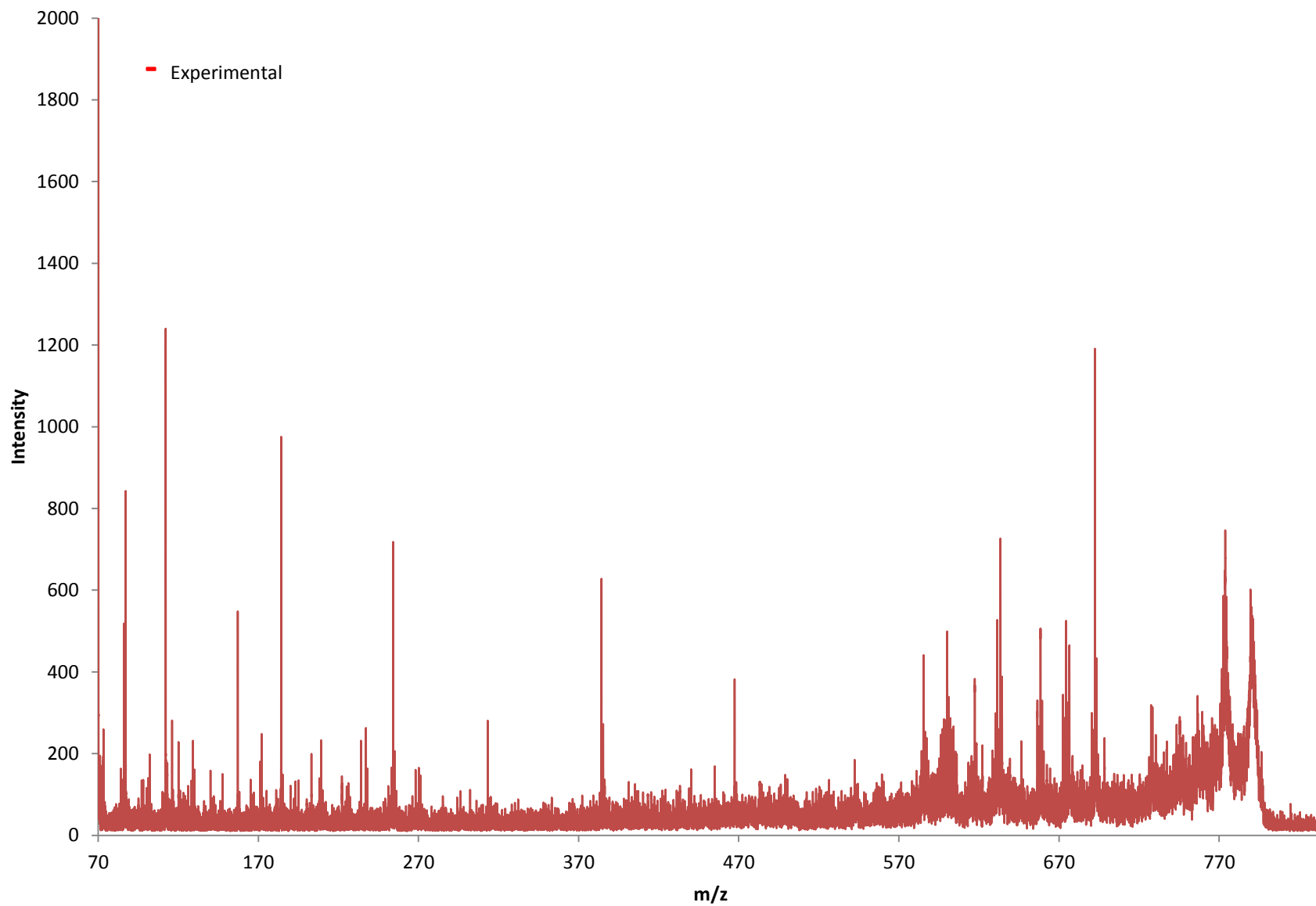
Supplemental Data

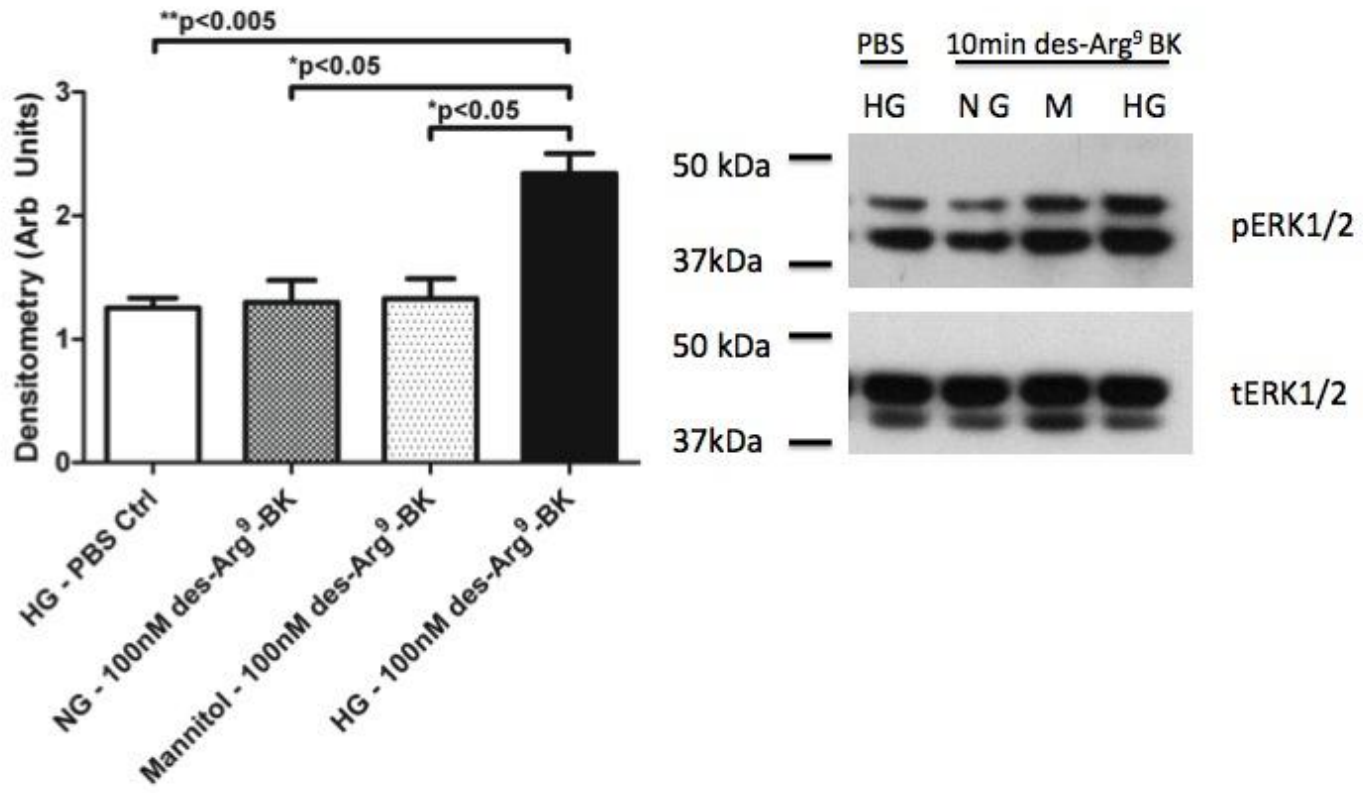




(K)-RP-Hyp-GFSPF-(R)



789.394 m/z



BEGIN IONS
PEPMASS=757.409
CHARGE=1+
TITLE=Label: E12, Spot_Id: 296154, Peak_List_Id: 545866, MSMS Job_Run_Id:
24631, Comment:
70.092705 326538.91
72.095688 8414.7764
73.089523 10334.357
73.238449 2931.2112
84.097786 5454.2886
85.098694 2959.9031
86.103889 12355.075
87.107079 88814.266
95.090431 2508.4268
97.104828 5335.2935
98.08873 17232.836
100.11081 7818.9502
101.12018 7235.7388
110.09683 2700.4446
112.11224 123605.54
114.11834 2486.9004
115.12048 5845.7192
116.09653 15655.833
120.10822 16348.742
124.11241 4662.9189
125.10479 6719.1987
126.08008 20119.541
127.11437 7104.3779
128.11842 7746.397
129.13231 17782.246
130.14764 23014.684
139.11279 2049.2126
140.10762 10922.029
151.14902 7336.9653
152.12367 3021.822
153.10889 2450.4236
155.1123 16983.689
157.12488 45004.359
165.13026 5553.6318
166.15613 4943.1333
167.14484 18802.551
169.15033 6720.5825
175.13431 3466.0752
177.13396 3399.4202
184.09608 3284.4465
192.13185 12238.346
193.14247 5453.229
194.14825 4168.6133
195.13687 20592.078
197.14253 23695.438
203.12837 13826.942
205.1252 2830.6042
209.15866 24661.42
212.15408 6408.4409
220.13649 2240.0464
226.20876 9384.8506
227.21776 5010.3853
237.15312 45083.469
252.16577 6514.1401
253.1557 1655.766

254.1772 68812.813
272.19315 4809.3267
274.1958 3220.8284
292.17267 2979.1179
294.17896 1631.5973
302.17996 11497.018
306.22968 2440.9294
316.20972 2519.0913
317.20847 1846.7275
323.27078 10778.908
333.21045 5909.6729
334.19733 1792.8146
337.19821 5732.9941
349.20297 2191.2358
351.23264 1787.1007
361.21494 1985.4659
363.2439 4613.0415
371.24115 8860.7441
389.21634 10967.937
390.20712 8140.9155
391.23132 7264.4414
399.22934 11101.389
408.26059 15294.256
423.24585 7610.5586
426.27805 5538.8066
440.25873 3117.1057
451.36365 2534.5059
468.26859 2084.3525
486.27884 17994.506
504.28687 33159.797
510.33121 25685.826
514.28339 4507.3877
527.36853 22822.551
538.32611 13175.15
555.35925 23903.65
557.35168 1674.8506
559.35547 4208.7441
563.31995 28764.277
571.34528 6577.5679
572.3573 4310.8276
573.37537 12931.193
581.3902 5726.604
583.33698 3574.7466
597.37372 22854.826
598.41797 15358.378
601.36218 413026.66
613.35657 18742.525
614.41132 27324.369
624.38031 6295.7803
625.37646 15109.807
640.3938 23679.336
641.39105 8527.5703
642.40442 84177.117
643.38855 21163.98
643.96777 6492.8848
656.41583 22088.559
658.39258 5873.8711
659.38159 26428.086
660.4046 467005.38
698.36188 28418.285

713.39844 5350.6304
727.45764 27850.652
END IONS

```
BEGIN IONS
PEPMASS=757.402
CHARGE=1+
70.10732 63410.13
72.10709 915.26
73.1018 1822.3
86.1074 1458.8
87.12561 14220.67
97.12881 894.93
98.10069 3037.75
100.13284 1269.85
112.12628 21242.43
115.12882 952.23
116.1076 1959.29
120.11826 2805.74
124.12884 1046.71
125.10397 618.18
126.08295 3397.83
127.14899 2202.13
129.15472 2520.54
130.16351 3592.79
140.11855 1675.18
141.14017 976.47
155.11348 3478.15
157.14397 4423.33
166.19145 1331.69
167.16115 3411.56
192.15538 2579.3
195.15536 3383.05
203.1526 1723.06
209.1675 4296.26
212.17218 1127.45
226.21967 1700.19
227.20325 1019.19
237.15724 9090.77
252.1779 1927.85
254.19873 9299.38
272.20206 905.33
302.19147 1485.91
323.29135 1748.13
371.25378 1432.08
389.24289 2382.63
391.26819 1208.78
399.24963 1659.93
408.2854 1379.63
486.29126 2048.61
504.31714 4844.12
510.36218 5111.67
527.37964 3352.42
538.34534 1929.5
555.3576 1843.14
597.39398 3916.48
598.45343 2034.22
601.36414 50538.64
614.42798 3226.79
625.40234 2098.99
640.38611 1103.43
642.39337 7889.83
660.41028 49873.74
698.37909 1963.79
```

727.46051 4494.03
END IONS

PEPMASS=789.394

CHARGE=1+

TITLE=Label: G12, Spot_Id: 294222, Peak_List_Id: 545602, MSMS Job_Run_Id: 24601, Comment:

70.128471 33259.672
72.050087 1003.678
73.126633 1697.5105
84.143509 1962.899
85.128906 906.6015
86.129745 4259.5713
87.145378 7479.5483
98.116493 1104.6545
102.14875 1535.5779
112.15109 12378.144
116.13466 2271.2305
120.1516 2338.686
126.12118 1079.7405
128.1449 1172.8079
129.16396 1521.0787
130.18707 1484.2795
140.13782 1739.3245
147.69601 1753.2334
157.16684 5544.3784
165.15692 1911.9421
171.14212 1578.9803
172.10281 1588.0046
175.1722 1120.4446
184.22546 8914.5596
190.10471 978.46161
193.17355 1277.4178
195.17186 935.58673
203.16397 1432.0684
209.19704 2492.8088
225.20851 1689.4082
226.239 768.64966
234.07054 1183.449
237.1951 2943.4961
253.20914 1587.3818
254.21887 6990.0601
268.19788 1101.339
270.2175 1193.0354
271.22644 826.81628
296.2023 910.72906
313.25732 2441.0486
384.30438 6024.3149
385.31232 1799.8707
455.08109 1801.0219
467.42859 3136.0486
542.35944 1647.8979
585.40173 4902.7354
586.3678 2099.6255
596.23975 4225.478
598.21783 4426.0024
599.19836 3239.4702
600.19415 8247.1377
602.16339 2698.6763
604.17053 2026.6566
617.42639 7208.0942
630.45435 5144.2363
631.41644 5755.7544

633.42944 10079.828
646.45593 2621.8718
656.47803 6866.896
658.46985 8657.749
660.44122 1161.1251
672.48413 6115.0737
673.43903 2116.1899
674.47003 5471.9126
676.48468 3004.448
690.4743 4427.9189
691.47925 1853.262
692.48315 12190.626
698.44788 2584.4714
727.50299 2773.4155

BEGIN IONS
PEPMASS=904.4763
CHARGE=1+
TITLE=Label: B1, Spot_Id: 296065, Peak_List_Id: 545875, MSMS Job_Run_Id:
24631, Comment:
70.087608 83528.938
73.087456 1601.9186
73.193878 2741.2117
86.089661 2975.8621
87.105812 14762.337
97.103584 1932.5789
98.08432 3490.5352
100.10383 1769.9641
101.1095 1930.9314
112.10608 30784.742
115.10125 1588.1757
120.1046 3506.4292
125.09411 1465.0565
126.07616 5111.5879
129.13657 3413.3914
130.13628 3705.5413
140.09203 2437.2886
147.56505 1816.6348
155.10863 4475.1475
157.12206 5369.9673
167.14043 4423.6104
185.09494 881.66492
192.12473 3516.3416
194.1387 1502.1227
195.12712 4946.5015
209.14932 5933.209
212.14246 1515.4066
226.17973 1370.1229
237.14384 9680.3936
252.16479 2372.6821
254.1653 14033.143
263.15048 7966.5894
302.17117 1623.6757
316.19818 1052.0105
323.24954 813.2113
333.18225 1116.0658
350.17963 2842.4487
371.23663 3160.5786
389.18561 2519.8281
390.17691 2113.6431
399.20944 2160.8503
408.23935 1844.6886
486.25058 4113.4746
510.29623 5905.2114
527.35468 7405.7852
538.30011 2606.7756
555.33374 2944.7683
597.34943 8982.7305
598.37146 4847.9937
614.38239 8104.562
625.33551 4595.8457
640.3573 3554.542
642.37549 10161.741
651.36328 3968.7549
739.42365 4802.0371

740.4176 4662.001
748.41064 74458.547
756.42981 6517.7744
757.44952 65037.715
874.61981 8749.835
END IONS

BEGIN IONS
PEPMASS=904.472
CHARGE=1+
70.10476 87393.02
73.09819 1772.22
86.11014 1812.59
87.11652 14455.91
97.12745 1591.48
98.09895 3847.75
100.11798 1974.87
101.14143 1077.8
112.11858 22571.36
120.12033 4089.29
125.11765 1899.49
126.08244 4644.38
127.13413 2115.31
129.15283 1619.39
130.16116 3033.14
140.12602 2542.31
151.15532 1366.33
155.11401 4268.96
157.14351 3939.74
166.17052 1467.62
167.13966 4199.95
185.11909 855.61
192.13577 3112.05
195.13396 3655.94
209.17299 5433.31
212.15804 1213.62
226.21527 1893
227.19827 844.29
237.14612 8066.45
252.15704 1434.72
254.17651 9473.76
263.1745 8305.92
272.18771 1146.46
274.18417 1401.67
302.17725 1734.59
316.20514 1028.06
323.28387 1638.24
333.22769 906.64
350.19196 2281.39
361.22122 996.16
371.2569 2043.38
389.20773 2597.35
390.2067 866.5
391.23138 571.54
399.2308 2056.54
408.25916 2031.37
486.27646 3314.6
510.32559 5345.01
527.35535 5053.68
538.2821 1206.67
555.33582 2520.8
597.36102 5615.94
598.41943 3082.06
601.32721 1315.67
614.37787 4659.87
615.39001 1918.94
625.34094 2518.69

640.37164 2459.42
642.37683 4712.22
651.37622 3661.95
704.03906 2260.64
713.00092 2693.9
713.99286 8024.79
739.45587 2861.11
740.43256 5364.3
748.43903 44256.11
757.47699 43645.31
845.42773 1690.81
874.49915 3208.23
END IONS

BEGIN IONS
PEPMASS=920.479
CHARGE=1+
TITLE=Label: C24, Spot_Id: 295320, Peak_List_Id: 545756, MSMS Job_Run_Id:
24623, Comment:
70.115646 410217.5
72.106071 6148.8135
73.111916 17933.188
84.121567 5420.9653
85.117371 4424.8408
86.111855 49341.902
87.127487 109994.12
95.110641 3618.4067
97.123718 11808.809
98.108925 18729.693
100.12802 13802.403
101.14026 9797.0654
112.13254 178178.75
114.10505 7422.9888
115.13538 6552.7769
120.12865 35633.832
124.13144 5261.1572
125.11964 8523.7998
126.10738 17371.328
127.14102 7766.9756
128.14107 9539.0859
129.15669 22475.236
130.16727 27134.092
139.13422 4950.2231
140.1256 15255.16
141.14339 6516.5034
142.10147 10653.33
143.13145 9321.9053
151.16798 9602.2344
153.11267 4085.5471
155.12941 4176.6821
157.14737 47681.711
165.15198 7504.0986
166.15871 8835.3662
167.16492 25614.236
171.12529 24567.387
177.14897 5739.2915
183.15057 4204.8257
185.13736 5851.8306
192.15549 16101.52
193.16447 7888.2686
194.1624 3156.1995
195.15573 15258.541
209.17801 30540.777
211.15814 9612.0703
212.17438 4847.2397
226.21121 15287.636
227.22452 7079.7817
237.16779 33281.137
253.17615 3364.8113
254.19077 80059.461
263.17654 55764.172
268.17081 10510.146
270.18143 2561.2207
272.20325 5075.6245

290.20758 6745.9658
292.19733 2703.5396
318.18835 11170.604
322.25851 1781.8953
332.2103 7175.9888
333.20831 2059.2339
339.27768 8324.5674
349.21118 2861.1274
350.21063 15809.942
367.2438 4022.407
368.26349 6698.3086
369.2601 2468.6848
377.24066 2875.1892
379.26321 7522.6255
387.24716 17709.514
397.28214 4392.0405
405.21701 11855.861
406.21201 5471.0537
407.23364 3092.3433
415.2345 14164.907
424.26865 14088.043
442.26669 1663.151
467.34064 4469.8462
474.2785 4370.6904
484.27869 3456.5776
502.27853 19723.883
526.32648 25210.193
543.37769 29954.822
554.32855 10107.765
569.33539 6032.0815
571.34851 13708.663
589.36957 6522.2637
613.38373 31787.396
614.414 19901.82
617.35266 4455.3867
630.41302 26480.068
640.38715 9292.7744
641.36719 16008.566
656.38348 18880.457
658.40088 48803.16
667.38318 12764.318
676.40582 13263.435
725.45428 5232.3887
727.50085 5161.5488
733.51434 5951.5679
748.49066 7966.6685
755.48132 29302.121
756.46912 27663.797
762.4566 8494.4541
764.46289 274216.91
771.47797 15737.39
772.4787 7322.269
773.49744 265895.22
861.44983 19016.711
890.60425 17628.029
END IONS

```
BEGIN IONS
PEPMASS=920.467
CHARGE=1+
70.09282 450161.69
72.09172 13522.75
73.0965 28521
82.09692 5021.3
84.11314 11506.52
85.1191 10386.57
86.09687 109134.42
87.11465 232299.03
95.1011 5833.8
97.1133 22402.19
98.09689 39988.65
100.11589 25102.75
101.12695 14910.37
112.11624 359645.66
114.09067 15944.19
115.11735 16023.48
120.11781 73319.59
124.11286 10380.61
125.115 18444
126.09357 28257.71
127.13143 12048.14
128.14572 11308.71
129.15009 35590.56
130.15839 72477.14
139.12004 6045.98
140.12297 31003.03
141.1295 10230.57
142.09567 21355.8
143.12401 24495.79
150.14015 4976.5
151.16704 14938.83
153.10954 6462.13
155.12581 4337.4
157.13991 77120.45
165.15288 5282.19
166.1666 12994.44
167.15161 45148.54
171.12096 70485.09
177.14639 9523.38
181.1498 4336.61
183.16005 12699.03
185.13118 8608.2
192.14787 40711.67
194.16695 7402.43
195.14607 29913.47
205.14403 5009.28
207.15958 4047.82
209.16725 62409.23
211.14886 16913.55
212.17009 13046.94
220.13675 7716.78
226.20869 32379.76
227.22876 10080.79
237.15793 84556.61
239.15416 3705.22
254.18803 114096.04
263.16583 111563.13
```

266.15308 4788.22
268.16745 25996.3
272.19882 13162.2
290.20004 14598.56
292.19855 4538.07
318.19153 25383.79
321.27866 6777.73
332.20187 18858.86
339.27563 11277.57
340.27606 3073.21
349.23132 3671.81
350.20026 29392.46
367.25711 2623.98
377.23193 7541.35
379.24789 17035.46
387.24438 39663.32
396.28262 8067.35
397.29065 5210.54
405.2272 24157.66
407.2424 15808.97
415.22778 25066.04
424.25711 20353.89
442.27206 3709.61
467.34259 5235.15
474.28391 8288.36
475.27975 4055.07
484.28967 6126.41
502.26105 38754.08
512.27917 3391.29
526.33057 57571.3
543.3938 63593.45
554.31061 12917.92
571.34943 29107.72
589.36902 6452.62
599.34723 4462.28
613.3548 49627.8
614.42725 51080.86
617.34308 7716.69
623.34998 5503.5
628.36267 4696.73
630.41071 57659.16
640.38824 8023.31
641.35907 34609.9
658.38867 85581.2
667.37158 24401.92
676.41602 26073.51
725.42584 13860.66
727.49438 4119.78
755.47327 31469.12
756.46051 77121.82
764.45026 486645.75
772.51691 20681.88
773.4809 451967.91
778.44818 13719.89
861.42169 29079.99
873.46521 13232.03
874.45435 4875.99
890.50537 42946.41
END IONS

```
BEGIN IONS
PEPMASS=1675.795
CHARGE=1+
TITLE=Label: E14, Spot_Id: 296155, Peak_List_Id: 545883, MSMS Job_Run_Id:
24631, Comment:
70.091637 9753.5576
73.144524 3680.8333
84.107841 778.4939
86.112755 891.8172
110.08856 9735.8506
112.10406 1488.2759
120.10634 1408.2837
127.10512 5427.4067
129.12801 1406.6591
136.0798 1247.425
147.36252 2965.2207
155.10052 6507.541
175.11852 2022.4446
209.10696 1507.4442
213.12173 1193.4991
221.74771 738.1037
235.12318 809.87408
367.16 1810.6008
402.19214 2098.7654
419.20831 7994.5815
421.18701 1365.4259
466.19312 1224.0037
492.17886 1668.8361
539.23462 1640.4506
556.25549 8773.2568
655.23346 951.10266
719.32532 2747.4668
790.34625 2624.311
861.37488 6344.4717
886.37067 2176.5867
998.45038 98728.203
1096.4473 1525.4814
1120.4613 2860.6785
1210.5605 13254.699
1230.5289 1080.1445
1257.5372 10118.72
1309.6409 68293.828
1407.6381 1924.6011
1515.6909 3201.6069
1519.634 4412.9209
1521.6654 2289.1587
END IONS
```

BEGIN IONS

PEPMASS=1675.794

CHARGE=1+

70.10877 198843.5
72.11639 9492.24
87.12589 6250.1
98.1087 3556.58
110.10587 302044.84
112.12519 14122.66
115.13598 8970.19
116.11317 3296.52
120.11724 13118.93
122.10409 5108.71
126.08547 6177.59
127.12199 146403.56
130.15898 5754.17
136.1115 25393.1
138.09647 6854.76
141.14476 2333.33
153.13931 5176.84
155.10706 185741.61
158.12096 8260.6
159.12689 3948.11
162.13261 3407.84
164.14162 3672.56
166.09969 9965.19
167.13074 4664.05
175.1528 40118.59
181.14021 18533.89
185.1322 7000.28
195.13159 7699.24
202.131 3325.91
206.15349 2734.31
207.1432 7052.38
209.12979 43667.19
213.11359 36395.31
217.17139 22345.17
219.16919 4766.31
225.14391 8559.06
230.13477 6110.97
234.12563 21914.32
235.14287 32171.62
238.1889 4943.2
245.14822 9081.44
247.13576 3515.13
252.16916 15179.36
253.14674 8201.78
262.16983 11931.08
263.16669 8836.51
273.15836 12693.24
280.1568 31879.45
284.12473 10695.75
301.13055 11682.75
305.18011 22532.41
306.19135 7162.34
310.1665 33364.62
312.18546 11881.91
322.1803 25115.9
324.17166 8313.72
332.17642 5508.67

348.18179 8232.16
349.19327 3404.25
350.16016 52543.93
352.14413 22319.74
367.18011 66714.2
372.15155 15142.16
376.22452 15125.73
381.20886 14863.29
393.17892 11018.63
395.15939 8832.17
402.21689 47665.53
409.21268 9416.96
415.18924 9161.48
417.22467 24858.2
419.21466 142621.05
421.18411 35026.97
423.18356 5560.92
438.24112 20343.2
443.18085 23724.92
464.20016 9257.63
466.21997 28000.93
474.23596 6568.52
492.22272 60731.12
521.24109 9527.48
539.23706 35808.65
552.22589 17044.17
553.24036 4426.83
556.26044 137240.5
580.21417 18796.12
591.22681 4387.55
621.25751 4989.4
627.26709 11404.84
655.25519 34783.61
719.32129 64177.59
764.29736 18160.29
773.33405 7387.41
787.33588 10743.67
788.37555 7486.87
790.35278 64098.63
792.33252 30500.56
815.33191 27884.45
844.35962 8919.47
858.37787 12641.88
859.39142 5786.71
861.38403 83389.27
864.39545 4209.76
886.35931 37294.08
891.40497 7751.12
929.38794 7426.86
957.39624 47861.63
981.44434 37950.82
998.43768 1268519.13
1092.46985 14900.79
1095.45557 12880.65
1096.479 38683.11
1113.49707 16091.21
1120.48218 66022.3
1123.50623 4601.84
1193.51196 31700.26
1210.54028 176212.45

1229.55542	59102.28
1257.52515	171495.34
1291.63318	14378.69
1292.61194	14685.54
1309.62158	957994.5
1354.57349	4145.27
1406.69434	16708.87
1407.6698 34213	
1424.67859	21770.56
1473.66138	18528.46
1501.65735	35965.34
1518.65051	12587.2
1519.66443	57611.93
1521.64514	49051.43

END IONS