

Figure S1. Western blot showing p53 levels in proximal tubules of WT and KO mice before IRI.

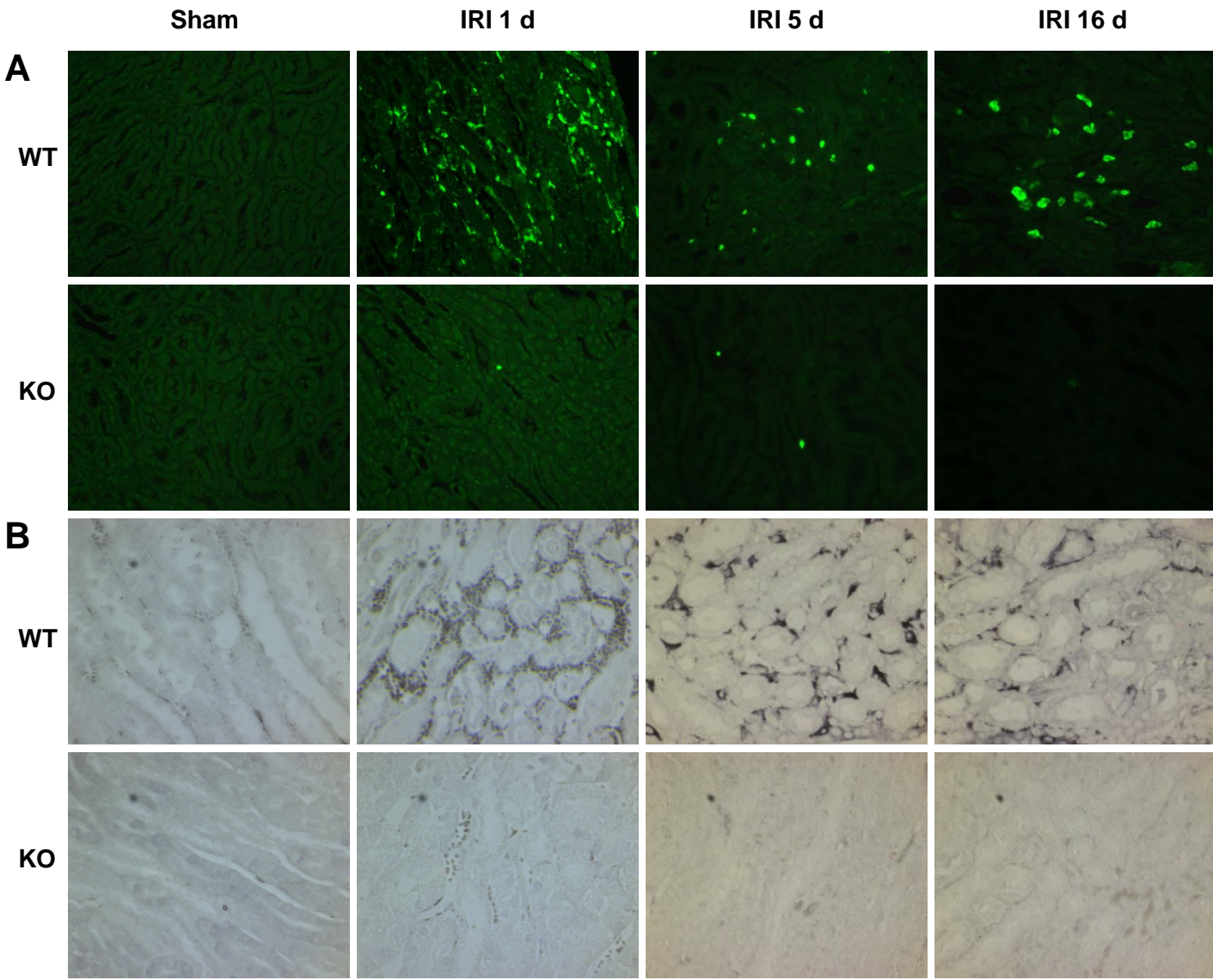


Figure S2. (A) Typical neutrophil and macrophage accumulation in the outer medulla of WT and p53 KO kidneys at 1, 5 and 16 days post IRI. Neutrophils (PMN) were identified by immunofluorescence using a neutrophil-specific antibody. (B) Macrophages were identified by DAB staining using anti-F4/80 antibody. Images are representative of four independent experiments.

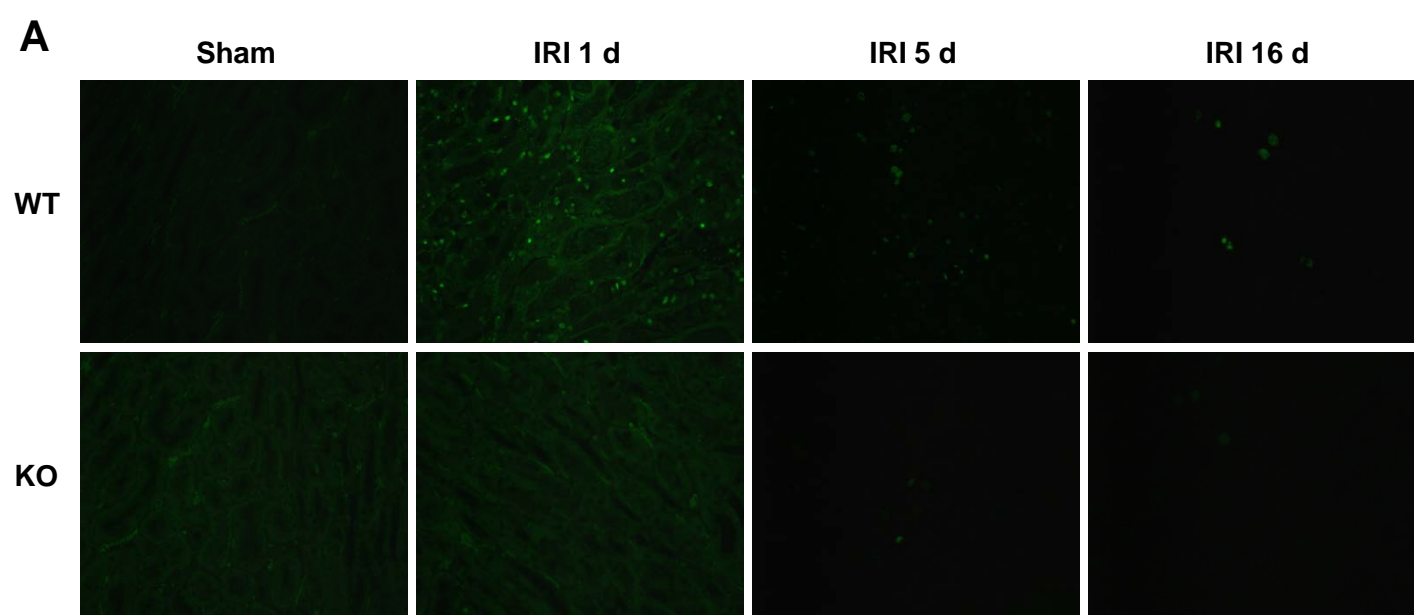


Figure S3. (A) Apoptosis detection by TUNEL staining in WT and p53 KO kidneys at 1, 5 and 16 days post IRI. Images are representative of four independent experiments.

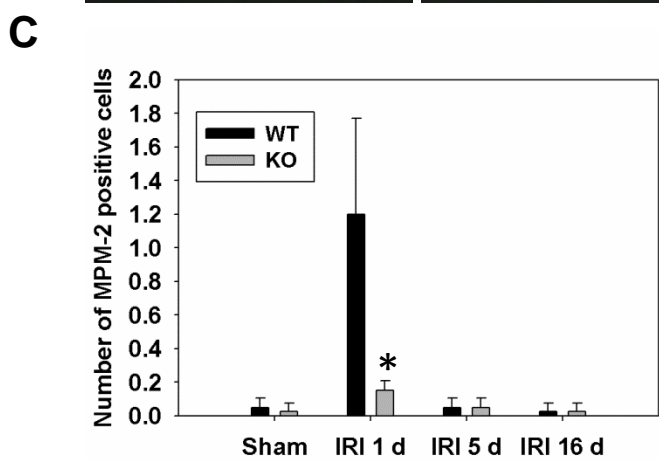
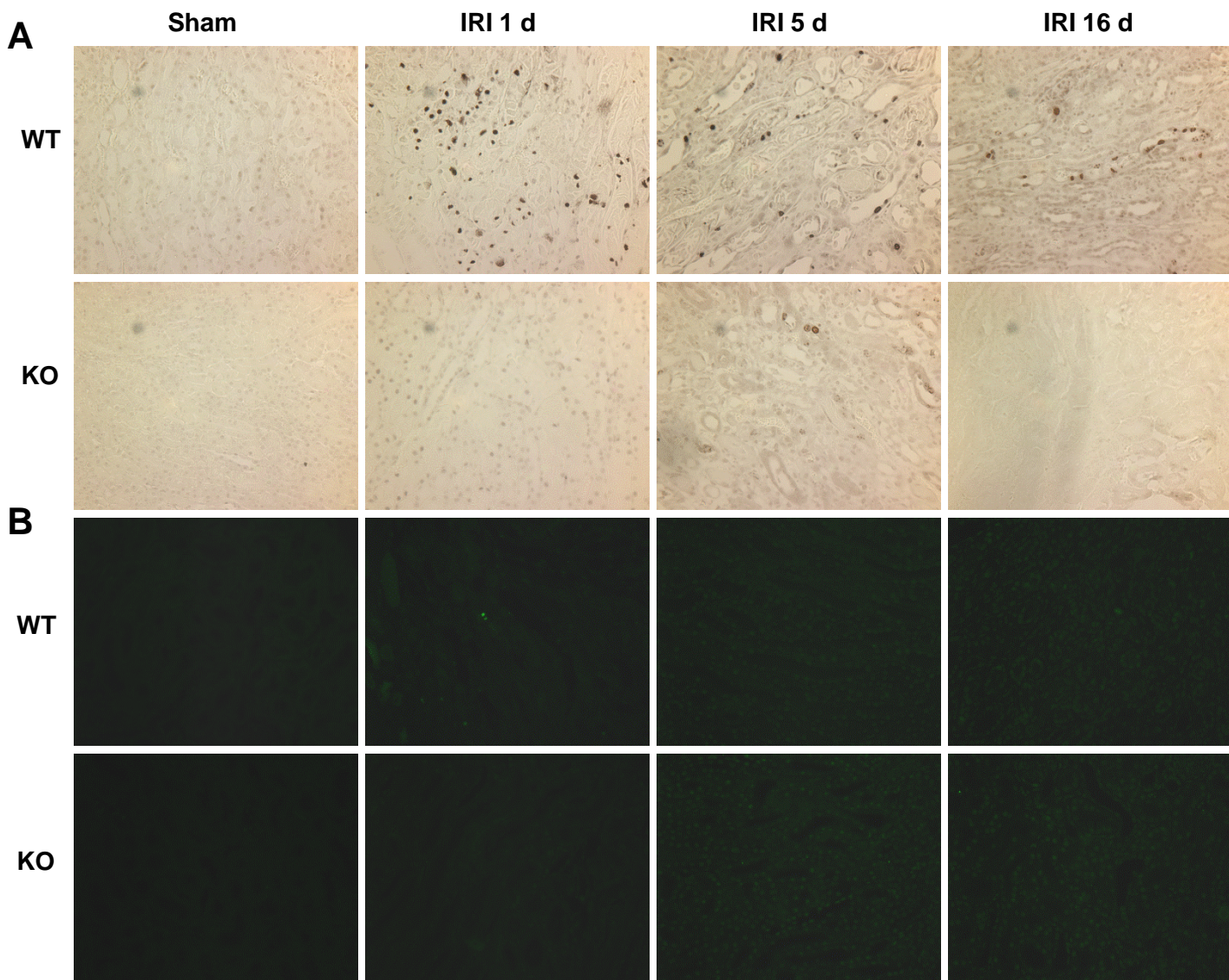


Figure S4. (A) Cell cycle arrest at G2/M phase was analyzed by p-H3 staining. Representative images of p-H3 staining in WT and p53 KO kidneys at 1, 5 and 16 days after IRI. Images are representative of five independent experiments. (B, C) Cells at M phase were marked by anti-phospho-Ser/Thr-Pro MPM-2 antibodies. * $P < .05$ compared with WT-IRI 1 d; $n=4$.