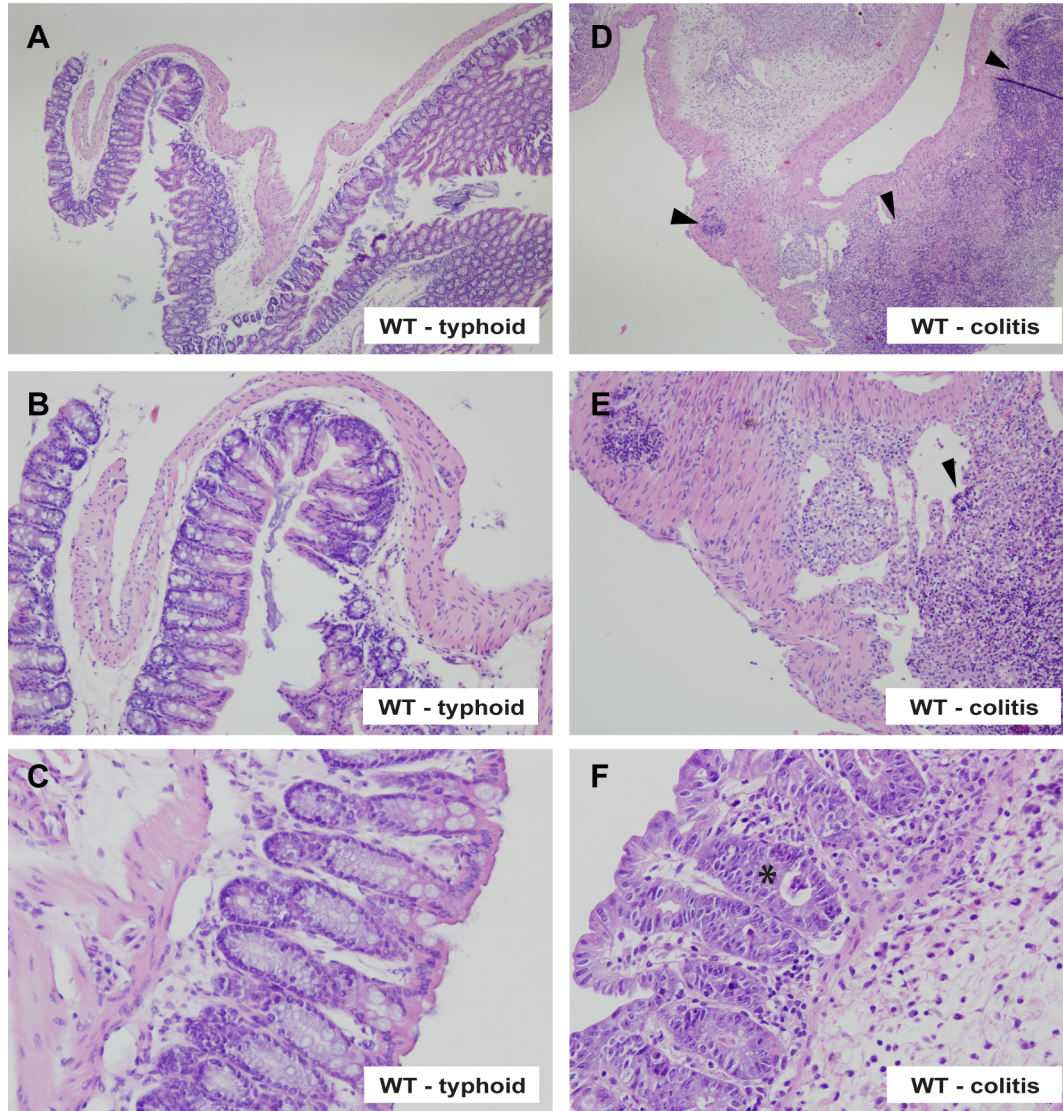


Additional file 1. Severe intestinal pathology seen in mice pretreated with streptomycin (colitis model) post infection with *S. Typhimurium*



Wild-type (WT) mice were starved for 12 h (typhoid fever model) or pretreated with streptomycin (colitis model) before infection with *S. Typhimurium* (10^6) per os and sacrificed post-infection to assess intestinal pathology. Representative photographs of haematoxylin and eosin (HE) stained slides are displayed of the cecum of the typhoid model (A-C) and colitis model (D-F) 4-5 days post infection. Original magnifications. $\times 4$ (A, D), $\times 10$ (B, E), and $\times 20$ (C, F). Severe intestinal pathology characterized by neutrophil infiltration, edema and extensive destructive ulceration of the mucosa is

seen in mice pretreated with streptomycin (colitis model) but not in a typhoid fever model. Arrowheads indicate severe colitis in mice pretreated with streptomycin accompanied by crypt abscesses (*).