

# Supplemental Materials

*Molecular Biology of the Cell*

Zeng et al.

## **SUPPLEMENTAL FIGURE LEGENDS**

**Fig. S1. LanCL2 expression in various cell lines.** Lysates were prepared from cells maintained in growth medium, and subjected to Western analysis.

**Fig. S2. LanCL2 knockdown impairs NDRG1 phosphorylation.** HepG2 cells were infected with control (“C”) or LanCL2 shRNA (“L-1, L-2”) lentiviruses, and selected by puromycin. Cells were starved overnight and stimulated with 10% FBS for 10 min, followed by cell lysis and Western analysis.

Fig. S1. Zeng et al.

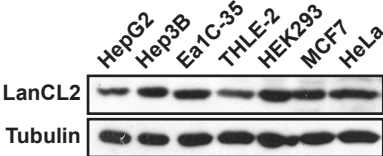


Fig. S2. Zeng et al.

