

## Supplemental Materials

### Working Groups

#### **CHARGE** (Cohorts for Heart and Aging Research in Genome Epidemiology)

Sampath Arepalli, Stefania Bandinelli, Alessandro Biffi, Joshua C. Bis, Eric Boerwinkle, Aravinda Chakravarti, Ming-Huei Chen, Sean Chong, Josef Coresh, David J. Couper, L. Adrienne Cupples, Abbas Dehghan, Angela Do'ring, Gudny Eiriksdottir, Janine F. Felix, Luigi Ferrucci, Aaron R. Folsom, Caroline S. Fox, Timothy M. Frayling, Santhi K. Ganesh, Melissa Garcia, Stephen F. Garner, Paolo Gasparini, Christian Gieger, Nicole L. Glazer, Natalia A. Goukova, Andreas Greinacher, Vilmundur Gudnason, Tamara B. Harris, Dena G. Hernandez, Albert Hofman, Thomas Illig, Yoichiro Kamatani, Naoyuki Kamatani, Michiaki Kubo, Brigitte Kuhnel, Vasiliki Lagou, Guillaume Lettre, Daniel Levi, JingPing Lin, Yongmei Liu, Dan L. Longo, Thomas Lumley, Massimo Mangino, Koichi Matsuda, Christa Meisinger, David Melzer, Stephan Menzel, Matt Moore, Yusuke Nakamura, Michael A. Nalls, Matthias Nauck, Christopher J. O'Donnell, Yukinori Okada, Ben A. Oostra, Willem H. Ouwehand, Kushang V. Patel, Nicola Pirastu, Giorgio Pistis, Holger Prokisch, Inga Prokopenko, Bruce M. Psaty, Alex P. Reiner, Augusto Rendon, Jennifer Sambrook, Andrew B. Singleton, Albert V. Smith, Nicole Soranzo, Tim D. Spector, Jonathan Stephens, Michael Stumvoll, Atsushi Takahashi, Toshiko Tanaka, Toshihiro Tanaka, Kent Taylor, Alexander Teumer, Swee Lay Thein, Anke To'njes, Daniela Toniolo, Tatsuhiko Tsunoda, Andre' G. Uitterlinden, Cornelia M. van Duijn, Frank J. A. van Rooij, Uwe Vo'lker, Henry Vo'lzke, H.-Erich Wichmann, Kerri L. Wiggins, James G. Wilson, Jacqueline C. M. Witteman, Andrew R. Wood, Kazuhiko Yamamoto, Qiong Yang, Neil A. Zakai

#### **CHARGE genotyping platforms by study:**

- *AGES-Reykjavik Study* - Illumina 370CNV BeadChip array
- *ARIC* - Affymetrix Genome-Wide Human SNP Array 6.0 platform
- *RS* - Illumina 550K BeadChip array
- *FHS* - Affymetrix 500K array and an additional gene-focused 50K array
- *inChianti* - Illumina 550K BeadChip array
- *BLSA* - Infinium II HumanHap550 v. 1, Infinium II HumanHap550 v. 3, or a composite of Infinium HumanHap300 and Infinium II 240S

#### **COGENT**

Sampath Arepalli, Melissa A. Austin, Diane M. Becker, Angela Britton, Zhao Chen, David Couper, J. David Curb, Eric Dean, Charles B. Eaton, Michele K. Evans, Aaron R. Folsom, Myriam Fornage, Santhi K. Ganesh, Struan F. A. Grant, Tamara B. Harris, Dena Hernandez, Naoyuki Kamatani, Brendan J. Keating, Michiaki Kubo, Andrea LaCroix, Leslie A. Lange, Guillaume Lettre, Simin Liu, Yongmei Liu, Kurt Lohman, Rasika Mathias, Yan Meng, Emile R. Mohler III, Solomon Musani, Yusuke Nakamura, Michael A. Nalls, Christopher J. O'Donnell, Yukinori Okada, Cameron D. Palmer, George J. Papanicolaou, Kushang V. Patel, Alexander P. Reiner, Andrew B. Singleton, Beverly M. Snively, Atsushi Takahashi, Hua Tang, Herman A. Taylor Jr., Kent Taylor, Cynthia Thomson, James G. Wilson, Lisa R. Yanek, Lingyao Yang, Elad Ziv, Alan B. Zonderman

#### **COGENT genotyping platforms by study:**

*ARIC* - Affymetrix Genome-Wide Human SNP Array 6.0 platform  
*CARDIA* - Affymetrix Genome-Wide Human SNP Array 6.0 platform  
*GeneSTAR* - Illumina BeadChip array

*HANDLS* - Illumina BeadChip array

*WHI* - Affymetrix Affymetrix Genome-Wide Human SNP Array 6.0 platform

*HealthABC* - Illumina Human1M-Duo BeadChip platform

## **RIKEN**

Koichiro Higasa, Tomomitsu Hirota, Naoya Hosono, Yoichiro Kamatani, Naoyuki Kamatani, Michiaki Kubo, Natsuhiko Kumasaka, Koichi Matsuda, Yusuke Nakamura, Hiroko Ohmiya, Yukinori Okada, Atsushi Takahashi, Mayumi Tamari, Toshiko Tanaka, Toshihiro Tanaka, Tatsuhiko Tsunoda, Yumi Yamaguchi-Kabata, Kazuhiko Yamamoto

## **Supplemental eQTL analysis**

We applied expression quantitative trait loci (eQTL) analysis to significant index SNPs using SNAP(18974171), and identified proxy SNPs in high linkage disequilibrium ( $r^2 > 0.8$ ). Index and proxy SNPs were searched for within a collected database of expression SNP (eSNP) results including the following tissues: fresh lymphocytes (17873875), fresh leukocytes (19966804), leukocyte samples in individuals with Celiac disease (19128478), whole blood samples (18344981, 21829388, 22692066), lymphoblastoid cell lines (LCL) derived from asthmatic children (17873877, 23345460), HapMap LCL from 3 populations (17873874), a separate study on HapMap CEU LCL (18193047), additional LCL population samples (19644074, 22286170, 22941192, Mangravite et al., unpublished), CD19+ B cells (22446964), primary PHA-stimulated T cells (19644074), CD4+ T cells (20833654), peripheral blood monocytes (19222302, 20502693, 22446964), CD11+ dendritic cells before and after *Mycobacterium tuberculosis* infection (22233810), omental and subcutaneous adipose (18344981, 21602305, 22941192), stomach (21602305), endometrial carcinomas (21226949), ER+ and ER- breast cancer tumor cells (23374354), brain cortex (19222302, 19361613, 22685416), pre-frontal cortex (22031444, 20351726), frontal cortex (20485568), temporal cortex (20485568, 22685416), pons (20485568), cerebellum (20485568, 22685416), 3 additional large studies of brain regions including prefrontal cortex, visual cortex and cerebellum, respectively (Emilsson, *Cell* in press), liver (18462017, 21602305, 21637794), osteoblasts (19654370), lung (23209423), skin (21129726, 22941192) and primary fibroblasts (19644074). Micro-RNA QTLs were also queried for LCL (21691150), and gluteal and abdominal adipose (22102887). The cited original papers describe the criteria of association with gene transcript levels for eSNP results. The best eSNPs associated with a transcript were further examined using DIAGRAM, and LD between the DIAGRAM-selected eSNPs and the strongest associated eSNP was compared to determine the concordance of DIAGRAM and expression signals.

## **Supplemental Figure Legends**

**Figure S1 - 11.** Locus plots for known hits. Vertical axis indicates Bayes Factor, and horizontal axes indicate both chromosomal position and gene location.

## **Supplemental Table Legends**

**Table S1.** Random-effects meta-analysis of MANTRA identified loci.

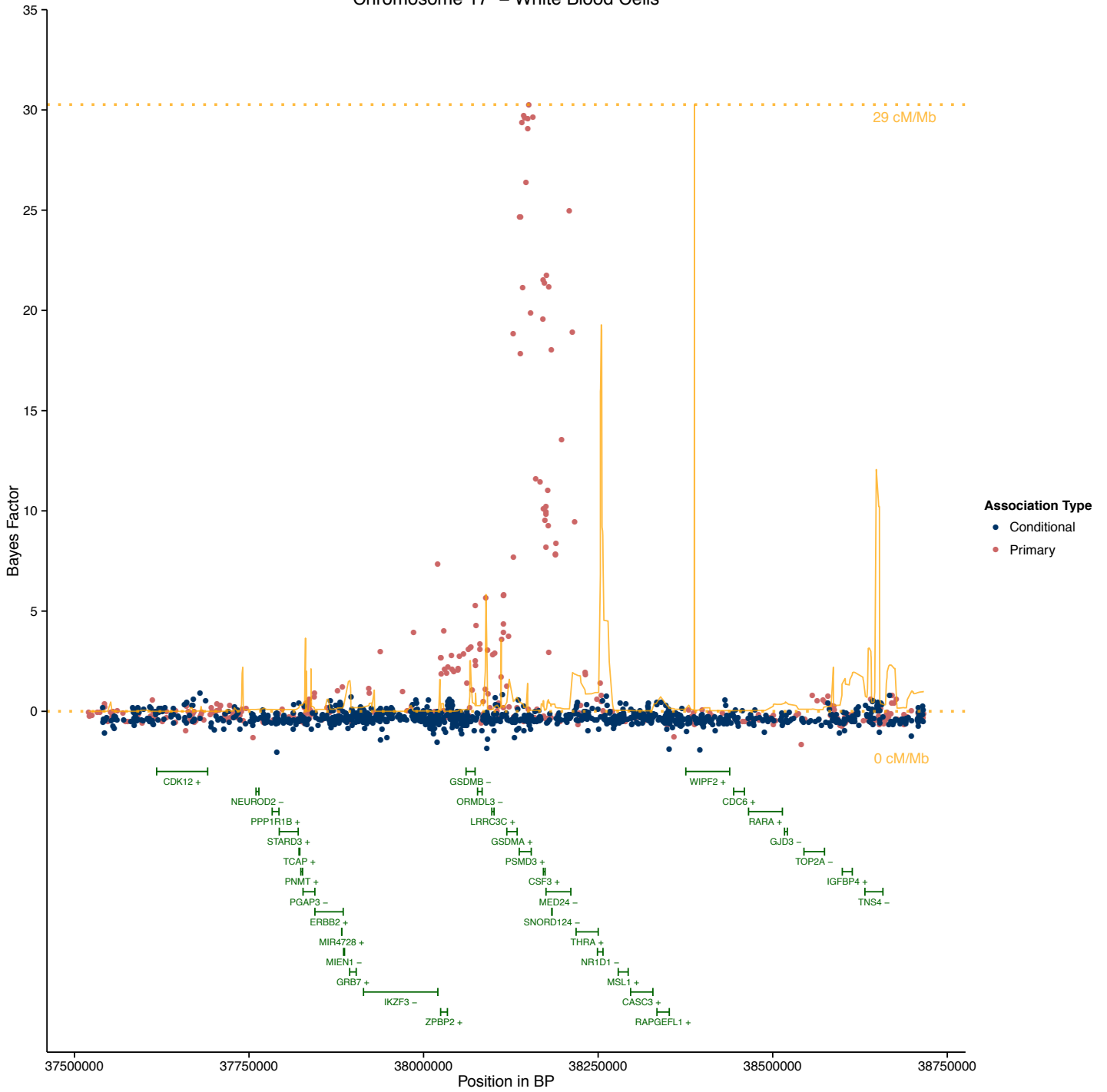
**Table S2.\*** Genome-wide summary statistics of the primary MANTRA analyses of Monocyte, Neutrophil, and White Blood Cell counts.

**Table S3.** Credible regions identified from MANTRA top hits are listed.

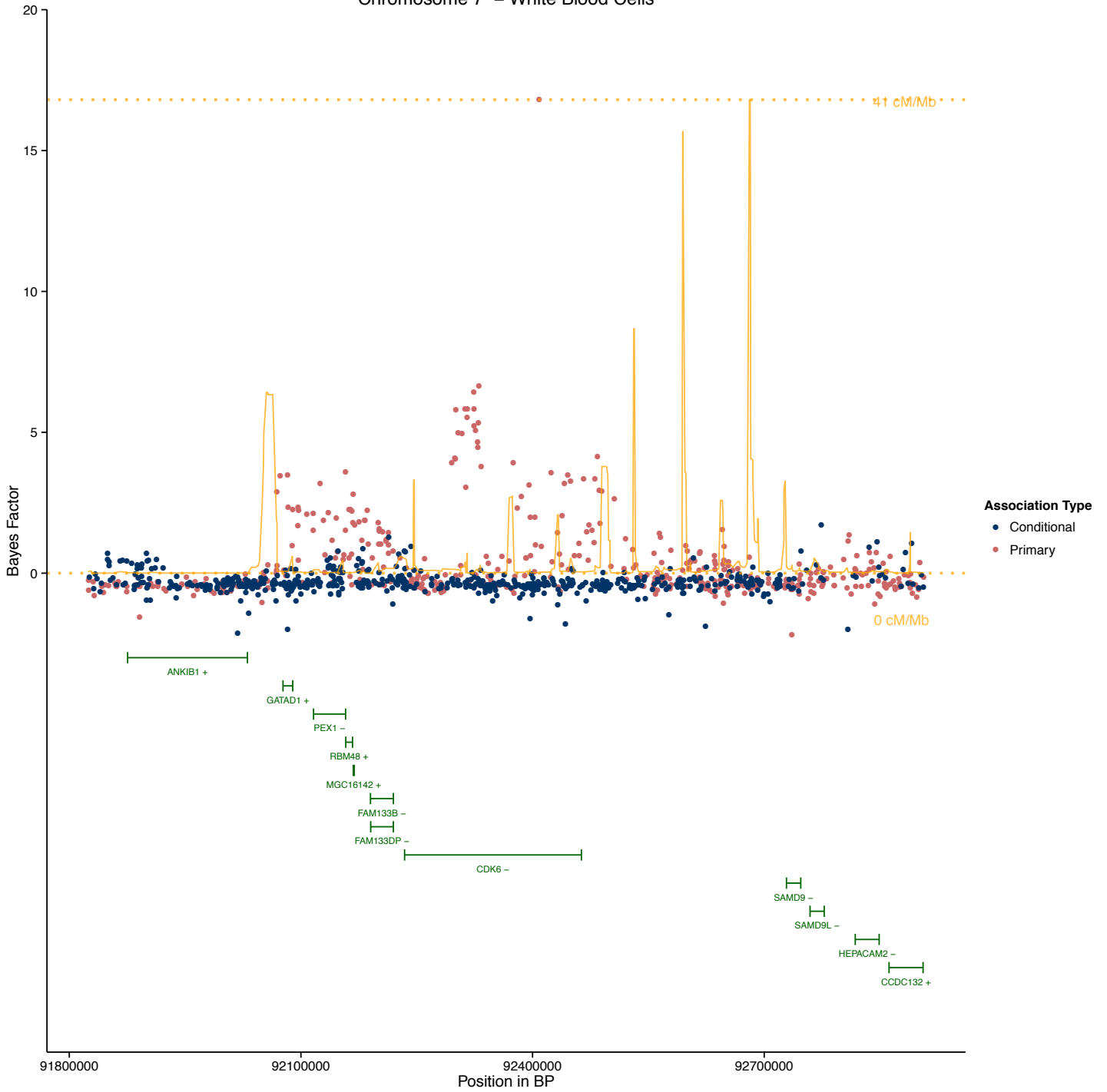
**Table S4.** Summarized eQTL analysis are reported.

\*Located as a linked file through HMG's sharing site.

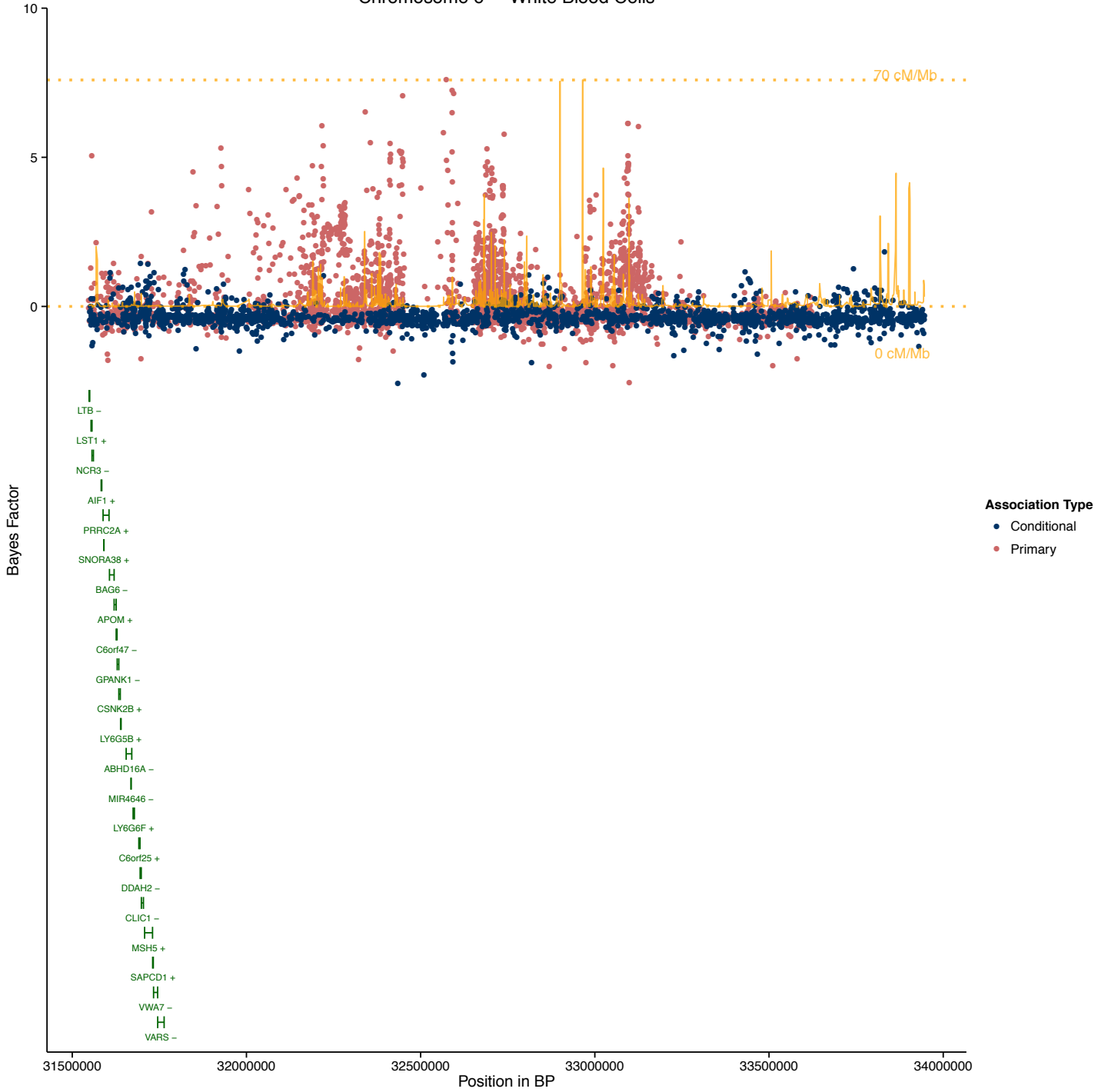
# Chromosome 17 – White Blood Cells



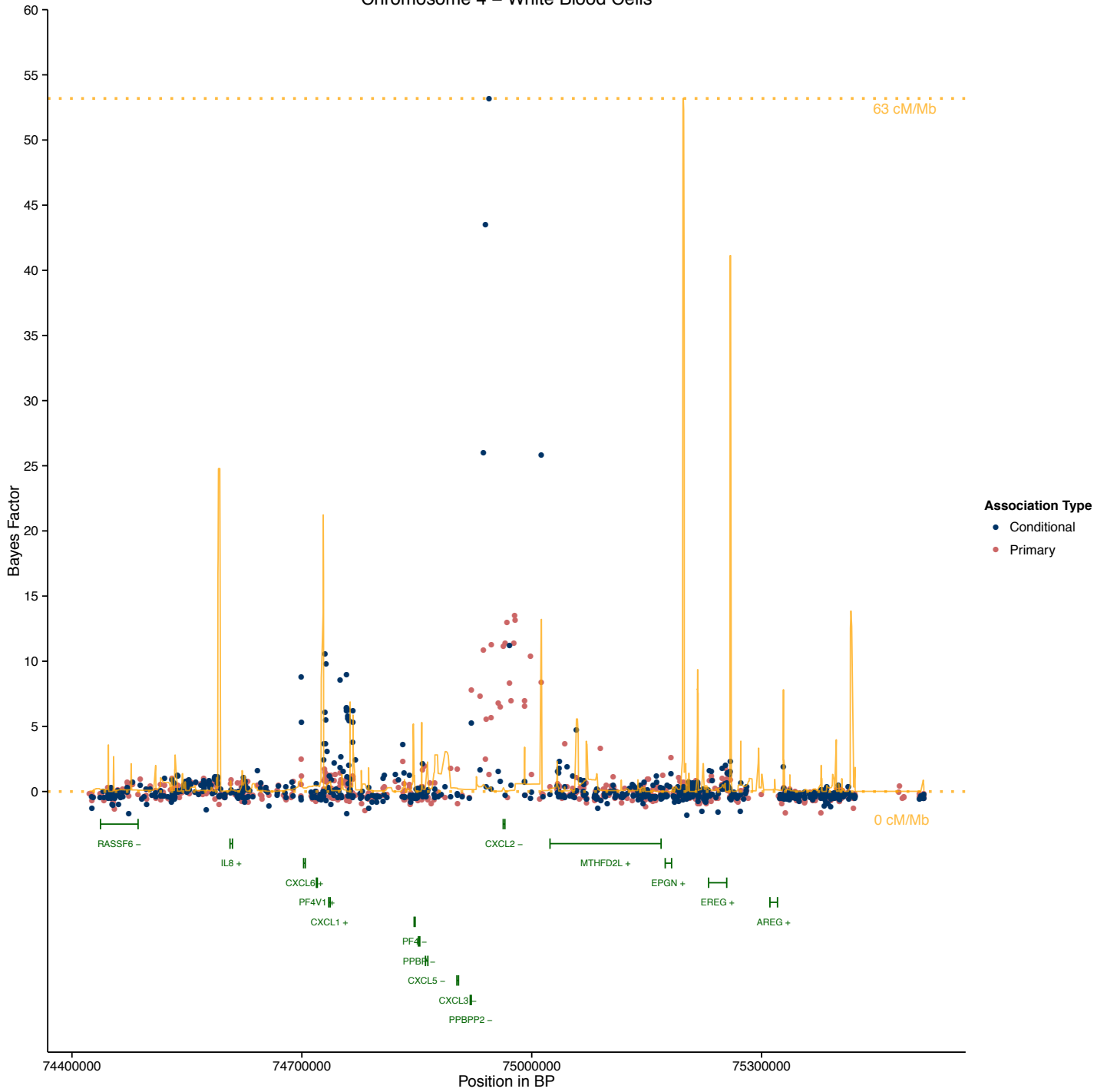
# Chromosome 7 – White Blood Cells



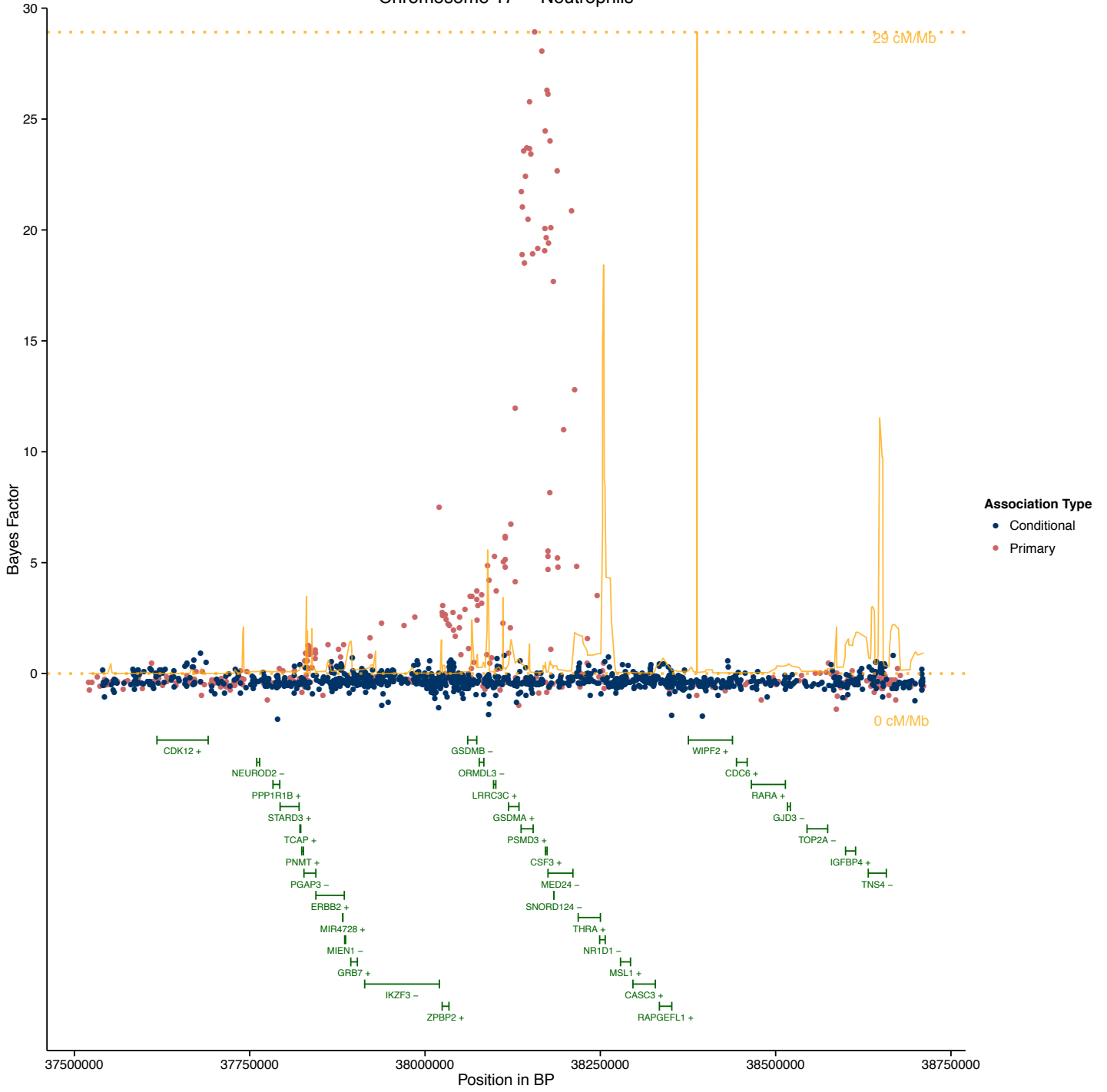
# Chromosome 6 – White Blood Cells



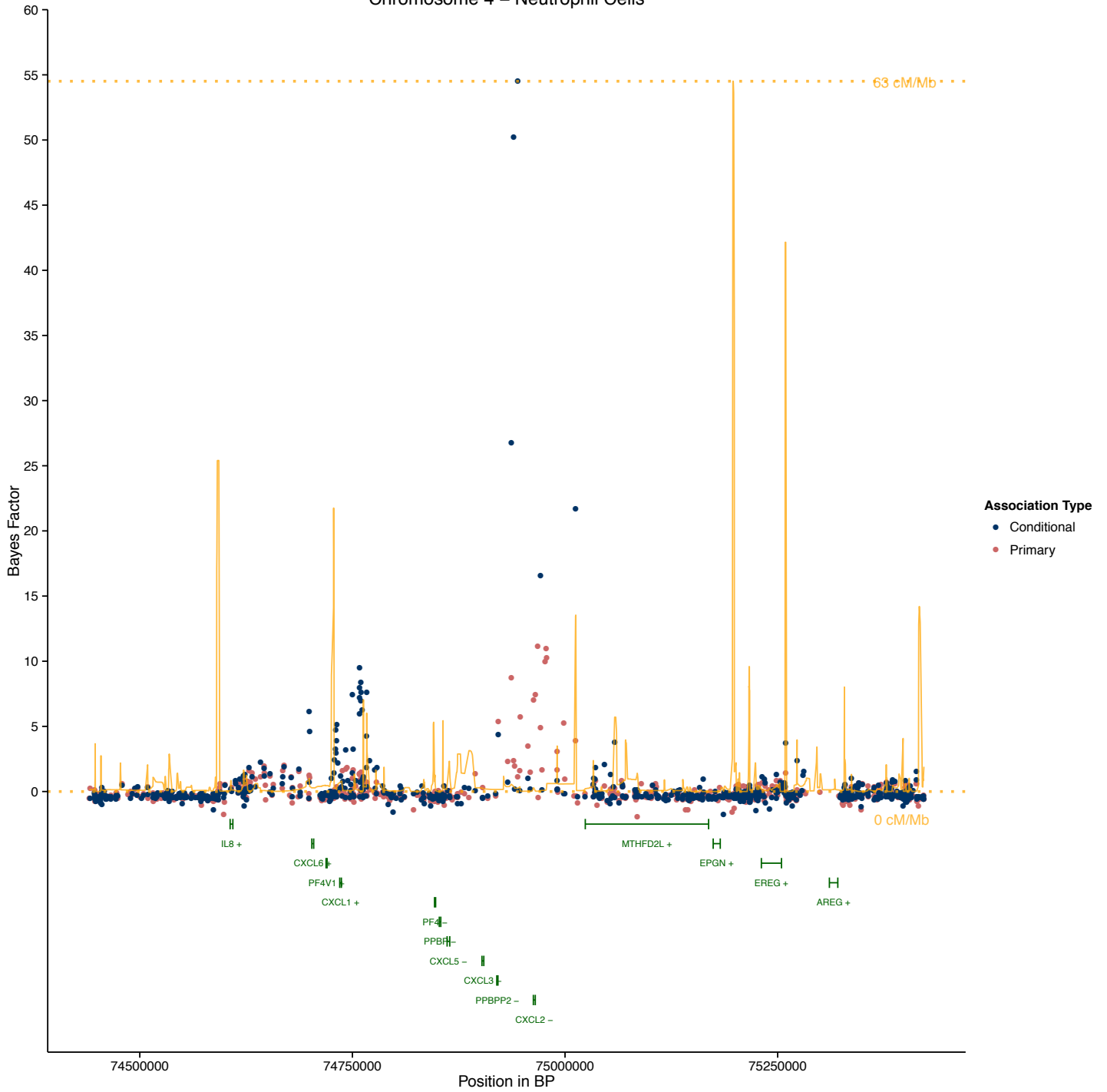
### Chromosome 4 – White Blood Cells



# Chromosome 17 – Neutrophils

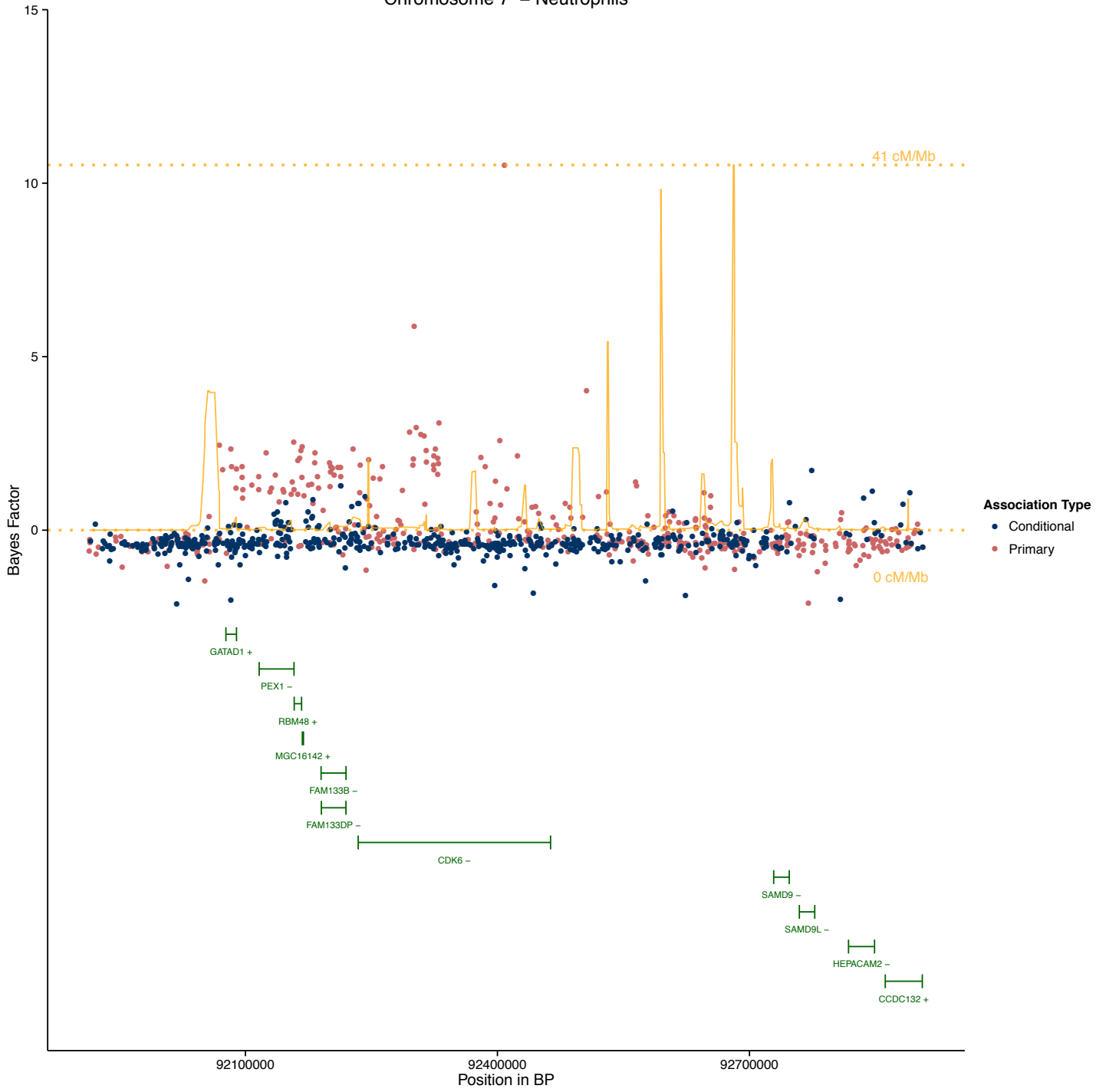


### Chromosome 4 – Neutrophil Cells

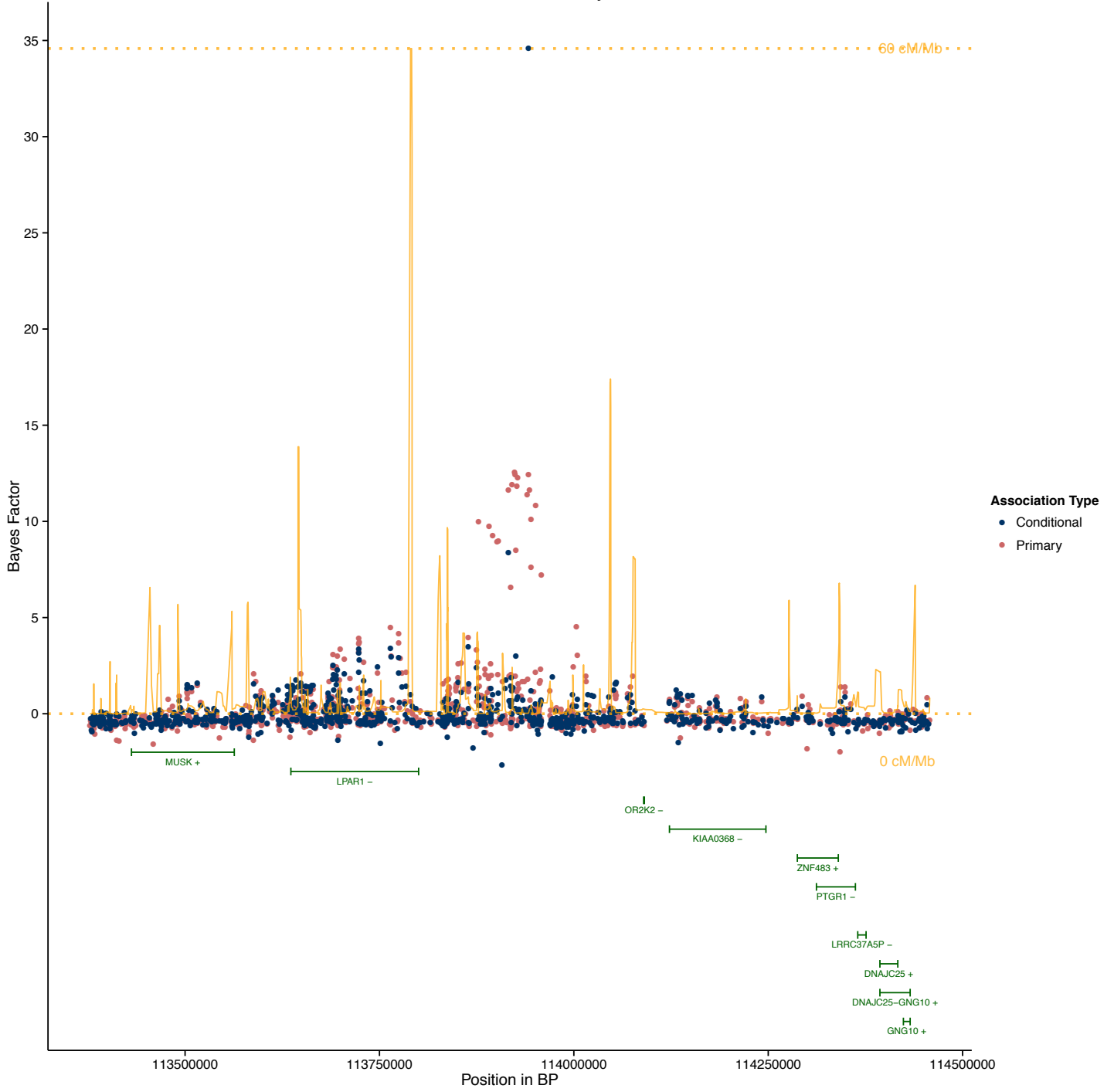




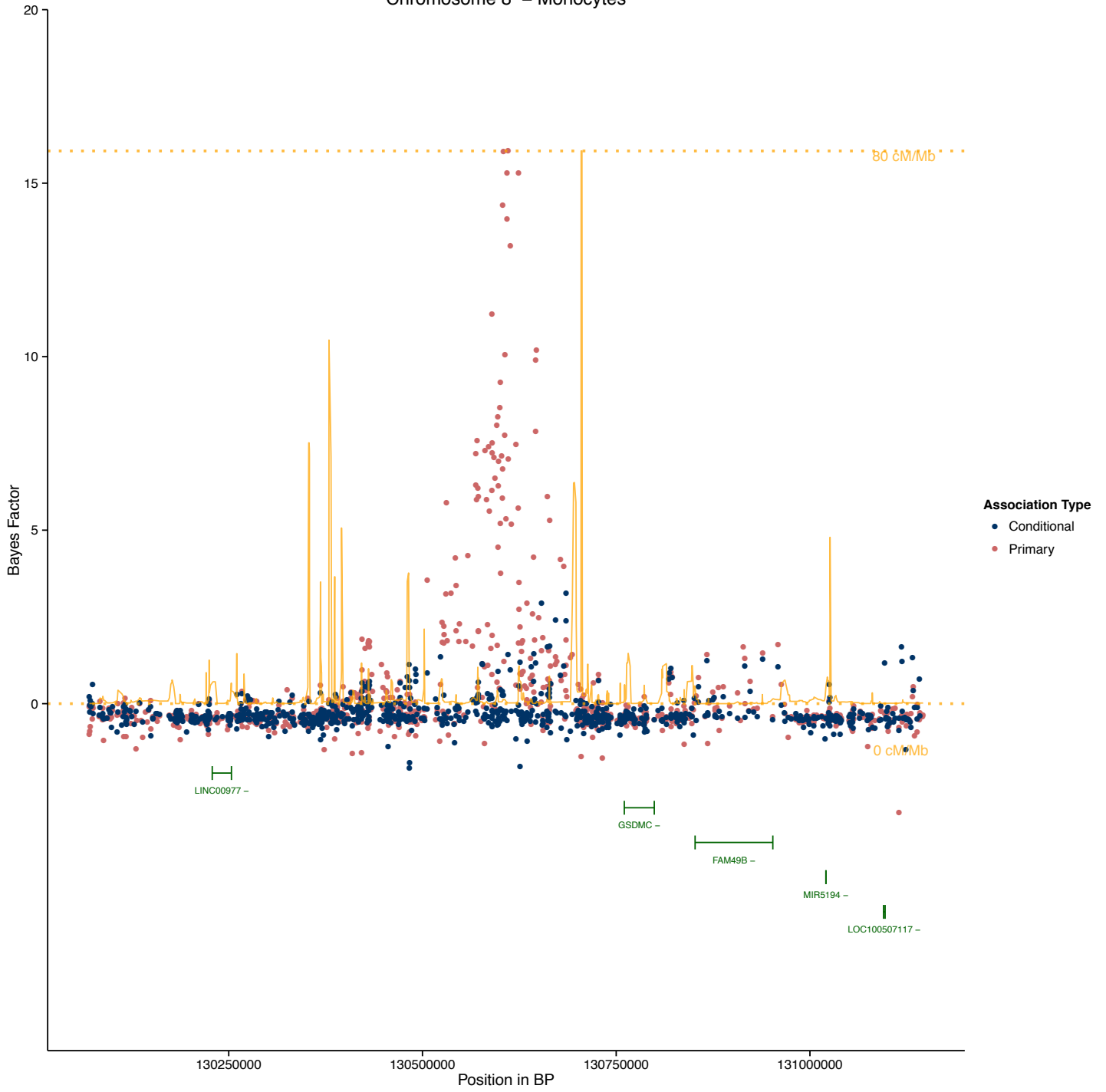
# Chromosome 7 – Neutrophils



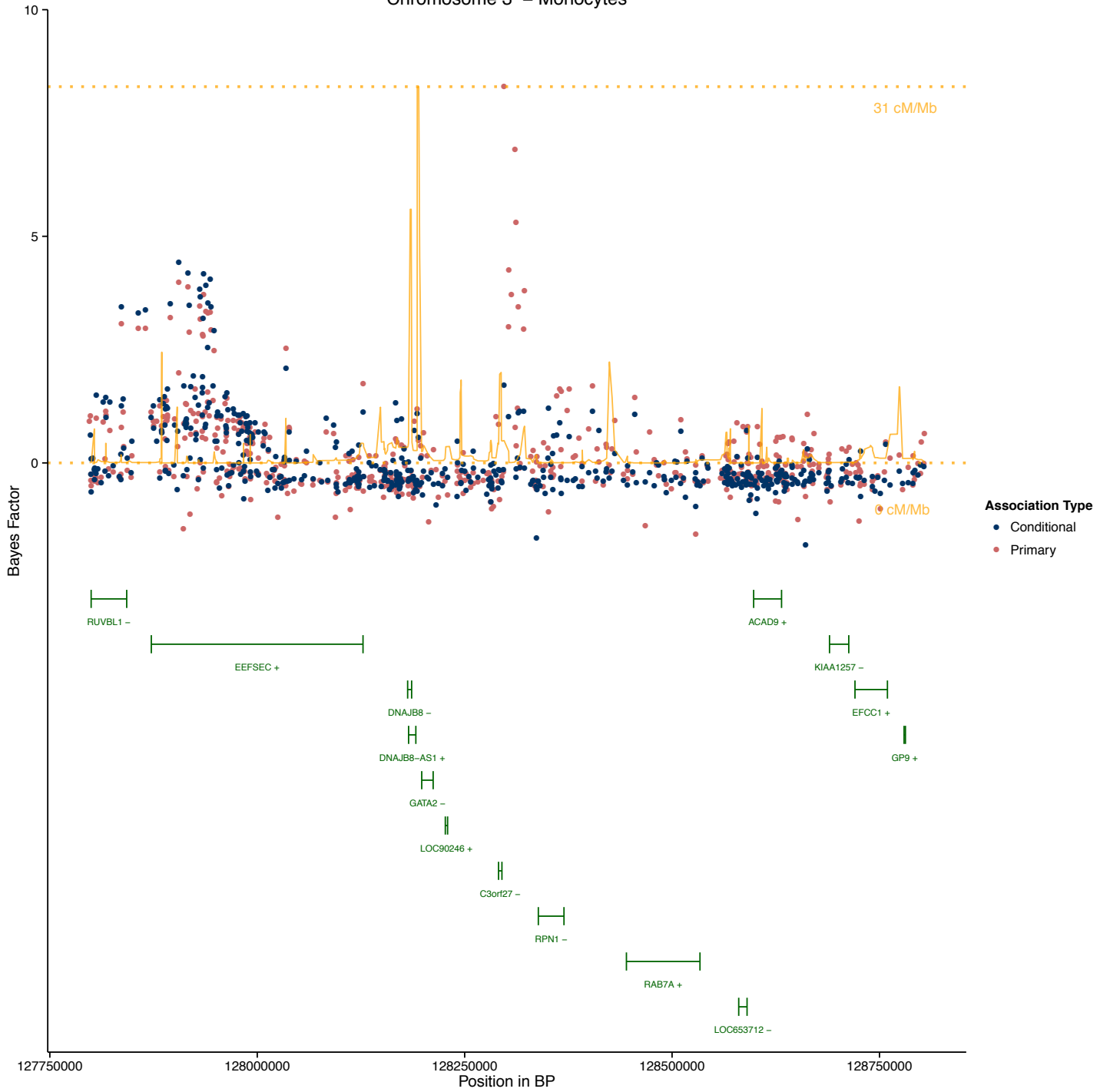
# Chromosome 9 – Monocytes



Chromosome 8 – Monocytes



# Chromosome 3 – Monocytes



### Chromosome 2 – Monocytes

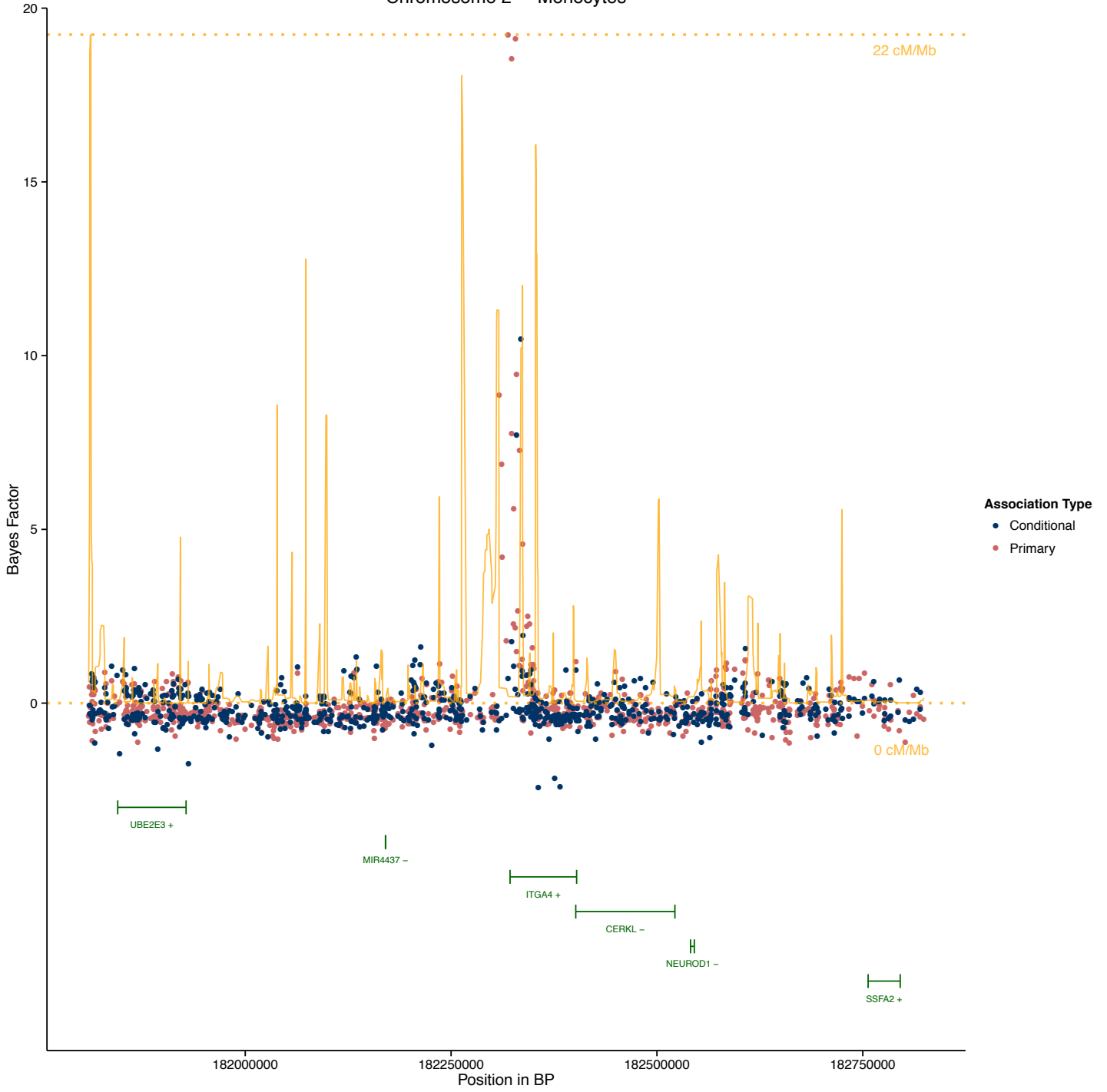


Table S1. Random-effects meta-analysis of MANTRA identified loci.

Phenotype	SNP	Chr	Position	A1	A2	Summary Frequency	Effect	Standard Error	P-value	Direction	Heterogeneity P-value
Monocytes	rs10209150	2	182329619	a	g	0.8526	-0.0065	0.006	2.83E-01	?+-	1.71E-01
Monocytes	rs10930969	2	182327957	a	g	0.1562	-0.0126	0.0038	8.25E-04	--+	2.27E-02
Monocytes	rs13415157	2	182330844	a	c	0.9791	0.0111	0.0119	3.51E-01	??+	1.00E+00
Monocytes	rs1375493	2	182323766	a	g	0.5217	0.0192	0.0024	1.86E-15	+++	4.23E-06
Monocytes	rs1449260	2	182333447	a	g	0.3123	-0.0153	0.0026	4.01E-09	---	1.65E-02
<b>Monocytes</b>	<b>rs1449263</b>	<b>2</b>	<b>182319301</b>	<b>t</b>	<b>c</b>	<b>0.4227</b>	<b>0.0087</b>	<b>0.0024</b>	<b>3.09E-04</b>	<b>++-</b>	<b>1.28E-17</b>
Monocytes	rs155138	2	182319878	a	c	0.9485	0.0082	0.0071	2.45E-01	??+	1.00E+00
Monocytes	rs155141	2	182317202	a	t	0.1367	-0.0107	0.0034	1.68E-03	---	1.99E-02
Monocytes	rs155146	2	182332350	t	c	0.0589	-0.0086	0.0066	1.93E-01	?+-	2.77E-01
Monocytes	rs155147	2	182332146	a	g	0.0981	8.00E-04	0.0049	8.64E-01	?-+	2.26E-01
Monocytes	rs155148	2	182331265	a	g	0.7178	0.0144	0.0038	1.44E-04	+++	5.26E-02
Monocytes	rs155149	2	182329647	t	g	0.6017	-0.002	0.0028	4.70E-01	--+	3.25E-11
Monocytes	rs2124440	2	182328214	a	g	0.5145	0.0188	0.0024	2.37E-15	+++	6.86E-07
Monocytes	rs3731835	2	182321179	t	c	0.9794	0.0113	0.0118	3.38E-01	??+	1.00E+00
Monocytes	rs3770132	2	182332961	a	g	0.7067	0.0139	0.0052	8.13E-03	+++	1.53E-01
Monocytes	rs3770136	2	182329460	t	c	0.5251	-0.012	0.0042	4.08E-03	---	7.20E-02
Monocytes	rs3770137	2	182326136	c	g	0.719	0.0197	0.0038	1.77E-07	+++	9.79E-01
Monocytes	rs3770138	2	182325907	t	c	0.4876	-0.0129	0.0038	6.40E-04	--+	2.96E-02
Monocytes	rs10188326	2	182311519	t	g	0.9237	-0.0079	0.0057	1.69E-01	??-	1.00E+00
Monocytes	rs10930969	2	182327957	a	g	0.1562	-0.0126	0.0038	8.25E-04	--+	2.27E-02
<b>Monocytes</b>	<b>rs12988934</b>	<b>2</b>	<b>182323665</b>	<b>t</b>	<b>c</b>	<b>0.2469</b>	<b>0.0382</b>	<b>0.0063</b>	<b>1.32E-09</b>	<b>+++?</b>	<b>5.90E-01</b>
Monocytes	rs13384671	2	182311594	a	g	0.6097	0.0123	0.0027	6.36E-06	+++	1.83E-05
Monocytes	rs1375493	2	182323766	a	g	0.5217	0.0192	0.0024	1.86E-15	+++	4.23E-06
Monocytes	rs1449263	2	182319301	t	c	0.4227	0.0087	0.0024	3.09E-04	++-	1.28E-17
Monocytes	rs155123	2	182312272	a	c	0.6856	0.0166	0.0036	3.61E-06	??+	6.03E-03
Monocytes	rs155138	2	182319878	a	c	0.9485	0.0082	0.0071	2.45E-01	??+	1.00E+00
Monocytes	rs155141	2	182317202	a	t	0.1367	-0.0107	0.0034	1.68E-03	---	1.99E-02
Monocytes	rs2124440	2	182328214	a	g	0.5145	0.0188	0.0024	2.37E-15	+++	6.86E-07
Monocytes	rs3731835	2	182321179	t	c	0.9794	0.0113	0.0118	3.38E-01	??+	1.00E+00
Monocytes	rs3770137	2	182326136	c	g	0.719	0.0197	0.0038	1.77E-07	+++	9.79E-01
Monocytes	rs3770138	2	182325907	t	c	0.4876	-0.0129	0.0038	6.40E-04	--+	2.96E-02
Monocytes	rs2010527	3	128303083	c	g	0.5977	0.0103	0.0029	3.95E-04	+++	4.53E-04
Monocytes	rs2465354	3	128294897	t	c	0.6569	-0.003	0.0034	3.65E-01	+?-	5.07E-01
Monocytes	rs2712421	3	128287743	t	g	0.3218	0.0038	0.003	2.11E-01	++-	1.67E-04
Monocytes	rs2712423	3	128290938	t	g	0.6312	0.0079	0.003	9.02E-03	+++	2.72E-01
Monocytes	rs2713575	3	128294355	a	g	0.4891	-8.00E-04	0.0027	7.81E-01	-?-	7.33E-01

Table S1. Random-effects meta-analysis of MANTRA identified loci.

Monocytes	rs2713589	3	128290208	t	c	0.5501	7.00E-04	0.0027	7.93E-01	---	8.55E-01
Monocytes	rs2734046	3	128292213	a	g	0.1691	0.0016	0.0042	7.11E-01	---	7.76E-01
Monocytes	rs6772849	3	128306418	t	c	0.3745	-0.0093	0.0026	3.86E-04	---	1.71E-04
Monocytes	rs6798431	3	128303373	t	c	0.5665	0.0102	0.0025	4.00E-05	+++	4.32E-05
Monocytes	rs7611156	3	128296868	t	c	0.7322	-0.0049	0.0039	2.12E-01	-+-	2.98E-01
<b>Monocytes</b>	<b>rs9880192</b>	<b>3</b>	<b>128297569</b>	<b>c</b>	<b>g</b>	<b>0.2892</b>	<b>-0.0134</b>	<b>0.0033</b>	<b>5.27E-05</b>	<b>---</b>	<b>2.28E-06</b>
Monocytes	rs166175	5	76062954	a	g	0.671	0.0032	0.0034	0.3449	+++	0.7236
Monocytes	rs193943	5	76049832	t	c	0.4632	0.0017	0.0027	0.531	+++	0.7421
<b>Monocytes</b>	<b>rs2047076</b>	<b>5</b>	<b>76058509</b>	<b>t</b>	<b>c</b>	<b>0.4863</b>	<b>-0.0046</b>	<b>0.005</b>	<b>0.3544</b>	<b>---</b>	<b>2.41E-07</b>
Monocytes	rs2054192	5	76048623	a	g	0.6932	3.00E-04	0.0038	0.9271	---	0.1092
Monocytes	rs250718	5	76050452	c	g	0.6716	0.0033	0.0034	0.3259	++-	0.08492
Monocytes	rs250719	5	76050491	a	g	0.5465	0.0032	0.0025	0.197	+++	0.9672
Monocytes	rs250720	5	76051465	a	t	0.5113	0.0019	0.0025	0.4546	+++	0.9669
Monocytes	rs250723	5	76056054	t	c	0.6509	0.0031	0.003	0.2977	++-	0.6892
Monocytes	rs250724	5	76061256	a	c	0.4776	-0.002	0.0025	0.4279	++-	0.8452
Monocytes	rs250726	5	76059981	a	g	0.3473	-0.0043	0.0028	0.1163	++-	0.5026
Monocytes	rs250727	5	76059301	t	c	0.4739	-4.00E-04	0.0024	0.8828	-+-	0.7668
Monocytes	rs250728	5	76059094	t	g	0.5791	-0.0023	0.003	0.4411	---	0.544
Monocytes	rs250729	5	76059055	a	g	0.4825	-0.0013	0.0024	0.5883	---	0.9574
Monocytes	rs250759	5	76067728	a	g	0.422	-0.0035	0.0024	0.1447	++-	0.7495
Monocytes	rs250760	5	76067624	t	g	0.6115	-0.0025	0.0033	0.445	---	0.615
Monocytes	rs250761	5	76067376	t	c	0.5567	-0.0051	0.0026	0.05333	---	0.9884
Monocytes	rs515362	5	76061924	t	c	0.5102	9.00E-04	0.0024	0.6994	++-	0.6515
Monocytes	rs6889169	5	76063338	t	g	0.9226	-0.0059	0.0059	0.3212	??-	1
Monocytes	rs1639114	6	31219224	a	c	0.0361	0.0066	0.0072	3.63E-01	??+	2.58E-01
Monocytes	rs1793891	6	31221698	t	c	0.8454	0.0062	0.0044	1.58E-01	-?+	6.40E-01
Monocytes	rs1986997	6	31228410	t	c	0.6391	-4.00E-04	0.0032	8.93E-01	++-	3.81E-06
Monocytes	rs2245822	6	31230800	a	g	0.1749	-0.0116	0.0035	8.18E-04	---	1.67E-01
Monocytes	rs2394950	6	31230701	a	g	0.0809	0.0035	0.005	4.81E-01	??-	5.41E-02
Monocytes	rs2394951	6	31230759	a	g	0.1812	0.0099	0.0031	1.46E-03	+++	4.06E-03
Monocytes	rs2394952	6	31230882	a	g	0.6833	-0.0092	0.0031	3.56E-03	---	5.25E-03
Monocytes	rs2524117	6	31230869	t	c	0.3878	9.00E-04	0.0027	7.33E-01	-+-	1.93E-03
Monocytes	rs2524118	6	31230667	a	t	0.0849	0.0045	0.0054	4.09E-01	-?+	8.68E-01
Monocytes	rs2524121	6	31228972	a	g	0.11	0.0156	0.0038	3.49E-05	+++	7.74E-04
Monocytes	rs2844626	6	31229552	a	t	0.57	0.007	0.0025	5.26E-03	++-	6.72E-02
Monocytes	rs2844627	6	31229462	t	c	0.6571	-0.0035	0.0034	2.99E-01	---	1.17E-03
Monocytes	rs2894189	6	31217815	a	c	0.4675	0.0066	0.0024	5.14E-03	+++	3.10E-02
Monocytes	rs2894196	6	31230111	a	t	0.0756	-0.0062	0.0053	2.44E-01	---	8.14E-01

Table S1. Random-effects meta-analysis of MANTRA identified loci.

Monocytes	rs3095241	6	31215635	a	c	0.3707	0.008	0.0027	2.47E-03	+++	3.12E-02
<b>Monocytes</b>	<b>rs3095254</b>	<b>6</b>	<b>31221668</b>	<b>c</b>	<b>g</b>	<b>0.5019</b>	<b>0.0091</b>	<b>0.0024</b>	<b>1.89E-04</b>	<b>+++</b>	<b>2.42E-05</b>
Monocytes	rs3130408	6	31213791	a	g	0.7627	-0.0073	0.0043	9.33E-02	+--	2.62E-02
Monocytes	rs3130409	6	31213811	a	g	0.366	-0.0089	0.0028	1.66E-03	-?-	2.45E-03
Monocytes	rs3130433	6	31219638	a	g	0.1028	0.0075	0.0044	9.26E-02	--+	2.64E-02
Monocytes	rs3130441	6	31228565	a	g	0.1039	0.0156	0.0039	5.48E-05	+++	1.88E-04
Monocytes	rs3130444	6	31228634	t	c	0.2079	-0.0044	0.0041	2.85E-01	+?-	5.22E-02
Monocytes	rs3899471	6	31215037	t	c	0.2635	-0.001	0.0031	7.55E-01	--+	6.02E-01
Monocytes	rs4084090	6	31218835	a	g	0.7796	-0.0064	0.0043	1.34E-01	+--	4.12E-02
Monocytes	rs4084262	6	31218889	t	c	0.6501	-3.00E-04	0.0033	9.29E-01	?--	9.25E-01
Monocytes	rs4332019	6	31213413	t	g	0.2873	-0.0013	0.0031	6.62E-01	--+	5.58E-01
Monocytes	rs4416711	6	31221039	t	c	0.7447	0.003	0.0042	4.83E-01	-?+	9.50E-03
Monocytes	rs7747738	6	31230924	t	c	0.8998	-0.0026	0.0051	6.13E-01	??-	1.00E+00
Monocytes	rs9264180	6	31219902	a	c	0.5862	-0.0061	0.0026	2.08E-02	---	1.62E-01
Monocytes	rs9264374	6	31228666	t	c	0.2297	0.0026	0.0031	3.87E-01	?+?	5.22E-01
Monocytes	rs9264386	6	31229130	c	g	0.6804	-0.0104	0.003	6.01E-04	---	6.36E-03
Monocytes	rs9264391	6	31229203	a	g	0.0369	0.0116	0.0079	1.40E-01	-?+	6.14E-01
Monocytes	rs9264409	6	31229738	a	g	0.1741	0.0097	0.0031	2.13E-03	+++	9.08E-03
Monocytes	rs9264416	6	31230042	a	g	0.668	-0.01	0.0039	1.06E-02	-+?	1.53E-02
Monocytes	rs9368665	6	31229248	a	g	0.6998	0.0039	0.0052	4.45E-01	+++	7.44E-01
Monocytes	rs9368666	6	31229644	a	g	0.7238	0.0045	0.0052	3.87E-01	+++	6.19E-01
Monocytes	rs9468908	6	31216227	a	g	0.0685	-0.0049	0.0057	3.90E-01	?+-	8.11E-01
Monocytes	rs9501364	6	31217026	a	g	0.0872	0.0095	0.0046	3.80E-02	+++	1.08E-04
Monocytes	rs9501543	6	31216956	t	c	0.0474	-0.0057	0.0069	4.07E-01	+--	1.16E-02
Monocytes	rs9501548	6	31228552	a	g	0.0812	0.0041	0.0049	4.03E-01	??+	6.94E-02
Monocytes	rs10092988	8	130624661	a	g	0.3854	-0.0098	0.0028	4.81E-04	+--	2.02E-04
Monocytes	rs10100356	8	130626164	a	g	0.229	-0.0074	0.0031	1.52E-02	---	9.51E-01
Monocytes	rs10956485	8	130620585	t	c	0.3076	-0.0141	0.0029	1.07E-06	---	6.60E-06
Monocytes	rs12550563	8	130629300	a	g	0.2936	-0.0086	0.0027	1.57E-03	---	6.24E-03
Monocytes	rs12681229	8	130623784	t	c	0.2914	-0.0173	0.0036	1.87E-06	--+	4.65E-04
Monocytes	rs13253638	8	130623190	t	c	0.4147	-0.0221	0.0086	1.03E-02	?--	8.29E-01
Monocytes	rs13263823	8	130631510	a	c	0.4878	-0.004	0.0025	1.10E-01	--+	1.46E-02
Monocytes	rs13265608	8	130624121	t	c	0.0989	0.0181	0.0058	1.81E-03	+++	1.03E-01
Monocytes	rs1433585	8	130626097	a	g	0.1356	0.0135	0.0041	9.94E-04	+++	3.32E-03
Monocytes	rs1469737	8	130626936	a	g	0.0209	-0.0094	0.0138	4.96E-01	??-	1.00E+00
Monocytes	rs1583333	8	130614899	a	c	0.2211	0.0173	0.0037	2.66E-06	+++	1.89E-03
Monocytes	rs16893247	8	130625884	t	c	0.4523	0.0085	0.0042	4.28E-02	+?+	2.21E-02
Monocytes	rs16904126	8	130627979	a	g	0.606	-0.0131	0.0041	1.38E-03	--+	2.16E-03



Table S1. Random-effects meta-analysis of MANTRA identified loci.

Monocytes	rs16904127	8	130628606	a	g	0.264	-0.0079	0.0031	1.18E-02	---	7.43E-01
Monocytes	rs17180246	8	130623468	t	c	0.6634	0.0079	0.0052	1.28E-01	?++	1.28E-01
Monocytes	rs17180387	8	130624988	t	c	0.0729	-0.0063	0.0059	2.91E-01	?-+	4.77E-02
Monocytes	rs1982094	8	130624816	t	c	0.5272	-0.0173	0.0049	3.87E-04	---	4.34E-04
<b>Monocytes</b>	<b>rs1991866</b>	<b>8</b>	<b>130624105</b>	<b>c</b>	<b>g</b>	<b>0.5138</b>	<b>-0.0156</b>	<b>0.0024</b>	<b>1.21E-10</b>	<b>---</b>	<b>1.41E-07</b>
Monocytes	rs7005206	8	130620813	a	g	0.1894	0.0073	0.0036	3.98E-02	-++	4.86E-01
Monocytes	rs7814618	8	130627555	t	c	0.5916	0.0066	0.0028	1.83E-02	+++	8.84E-03
Monocytes	rs7819128	8	130630157	t	c	0.3757	-0.0067	0.0028	1.52E-02	---	1.11E-02
Monocytes	rs7823123	8	130628808	t	c	0.0262	-0.0047	0.0117	6.88E-01	??-	1.00E+00
Monocytes	rs7825384	8	130626241	a	c	0.8726	-0.0053	0.0045	2.43E-01	??-	1.00E+00
Monocytes	rs7828331	8	130631930	a	g	0.425	0.0051	0.0027	5.61E-02	0	7.49E-03
Monocytes	rs7830620	8	130627508	a	c	0.7442	-0.0043	0.0035	2.23E-01	??-	1.00E+00
Monocytes	rs7834911	8	130628036	t	c	0.3566	-0.0078	0.0026	3.05E-03	---	3.55E-03
Monocytes	rs10116508	9	113913415	t	c	0.1843	0.0075	0.0057	1.91E-01	-?+	1.73E-01
Monocytes	rs10126017	9	113918933	a	g	0.4515	-6.00E-04	0.0026	8.22E-01	--+	5.87E-01
Monocytes	rs10217127	9	113919469	t	g	0.6003	-0.0061	0.003	4.03E-02	++	4.10E-03
Monocytes	rs10217157	9	113919523	t	c	0.4802	-0.0038	0.0026	1.49E-01	---	9.52E-01
Monocytes	rs10817156	9	113908195	c	g	0.4683	-0.0011	0.0024	6.44E-01	++	2.42E-01
Monocytes	rs10980798	9	113912649	t	c	0.1948	-0.0042	0.0031	1.86E-01	---	9.58E-01
<b>Monocytes</b>	<b>rs10980800</b>	<b>9</b>	<b>113915905</b>	<b>t</b>	<b>c</b>	<b>0.2554</b>	<b>-0.0093</b>	<b>0.003</b>	<b>2.23E-03</b>	<b>--+</b>	<b>7.40E-12</b>
Monocytes	rs10980802	9	113918856	a	g	0.7128	0.0122	0.0029	2.37E-05	++	1.53E-06
Monocytes	rs10980805	9	113920552	a	c	0.4128	0.002	0.0026	4.35E-01	--+	2.56E-01
Monocytes	rs12342967	9	113924902	t	c	0.5967	-0.0119	0.0036	1.02E-03	---	2.83E-02
Monocytes	rs12345546	9	113919677	a	c	0.3243	5.00E-04	0.0028	8.43E-01	++	6.14E-01
Monocytes	rs12346772	9	113920599	a	g	0.6638	-0.0226	0.0035	1.11E-10	---	8.14E-06
Monocytes	rs12350763	9	113923723	a	g	0.6447	-0.0166	0.0032	1.42E-07	---	5.54E-08
Monocytes	rs1330280	9	113908312	t	c	0.8854	0.0033	0.0076	6.64E-01	?++	3.70E-01
Monocytes	rs1360284	9	113921689	t	g	0.2286	-0.0028	0.0029	3.24E-01	---	9.06E-01
Monocytes	rs16915755	9	113916135	t	c	0.1795	-0.0031	0.004	4.42E-01	??-	1.00E+00
Monocytes	rs16915757	9	113918391	c	g	0.8825	0.0047	0.0049	3.41E-01	??+	1.00E+00
Monocytes	rs16915769	9	113923169	t	c	0.1178	-0.004	0.0048	4.09E-01	??-	1.00E+00
Monocytes	rs17811749	9	113916949	a	t	0.5784	0.0165	0.0047	4.76E-04	+++	2.81E-01
Monocytes	rs2418136	9	113919300	a	t	0.5811	0.0162	0.0047	5.66E-04	+++	2.83E-01
Monocytes	rs4541999	9	113907759	a	g	0.472	-0.0011	0.0024	6.55E-01	++	2.58E-01
Monocytes	rs6477805	9	113920108	a	g	0.3302	0.001	0.0028	7.22E-01	++	7.57E-01
Monocytes	rs6477806	9	113920161	t	c	0.662	0.0023	0.0028	4.18E-01	+++	8.45E-01
Monocytes	rs7023923	9	113925534	t	c	0.5666	0.0082	0.0025	1.15E-03	++	2.08E-08
Monocytes	rs7025176	9	113920511	t	c	0.0638	-0.0076	0.0067	2.53E-01	??-	1.00E+00

Table S1. Random-effects meta-analysis of MANTRA identified loci.

Monocytes	rs7034139	9	113924517	a	c	0.2196	0.0164	0.0032	1.99E-07	+++	3.94E-08
Monocytes	rs7849209	9	113915676	a	g	0.8211	0.0057	0.0042	1.78E-01	??+	1.00E+00
Monocytes	rs7867745	9	113908101	a	g	0.5084	0.0166	0.0054	1.96E-03	++-	5.55E-02
Monocytes	rs7870066	9	113911613	t	c	0.6929	0.0037	0.003	2.10E-01	+++	8.61E-01
Monocytes	rs9299192	9	113918647	a	t	0.3278	7.00E-04	0.0028	7.98E-01	+++	5.70E-01
Monocytes	rs1371798	4	74976781	t	c	0.4721	-0.0095	0.0031	2.14E-03	--+	2.78E-09
Neutrophils	rs1371799	4	74977837	t	c	0.4367	0.0088	0.0031	4.66E-03	+++	1.11E-10
Neutrophils	rs1837559	4	74959093	a	g	0.6052	-0.0159	0.0047	6.64E-04	-?-	3.55E-01
Neutrophils	rs1893319	4	74973129	t	c	0.5039	0.0152	0.0049	1.76E-03	+?-	5.59E-02
Neutrophils	rs3806792	4	74965274	t	c	0.4472	0.0068	0.0033	3.95E-02	+++	6.10E-08
Neutrophils	rs505197	4	74968560	t	c	0.9414	0.006	0.0189	7.53E-01	??+	7.12E-01
Neutrophils	rs549280	4	74971196	a	g	0.5094	-0.0204	0.0042	9.52E-07	-?-	5.14E-01
<b>Neutrophils</b>	<b>rs7667376</b>	<b>4</b>	<b>74967890</b>	<b>t</b>	<b>c</b>	<b>0.4765</b>	<b>-0.0084</b>	<b>0.0031</b>	<b>6.04E-03</b>	<b>+++</b>	<b>1.02E-10</b>
Neutrophils	rs9131	4	74963049	t	c	0.4904	-0.006	0.0033	6.92E-02	--+	1.62E-08
Neutrophils	rs10263804	7	92416590	a	g	0.877	5.00E-04	0.0108	9.63E-01	??+	1.00E+00
Neutrophils	rs2282995	7	92411623	a	g	0.6026	-0.0129	0.0045	4.43E-03	---	8.34E-01
Neutrophils	rs3731303	7	92403859	t	c	0.3011	0.011	0.0045	1.52E-02	+++	2.75E-01
Neutrophils	rs3731304	7	92403660	a	c	0.0161	0.0541	0.0309	7.96E-02	??+	1.00E+00
Neutrophils	rs3802072	7	92403053	a	g	0.1835	0.0152	0.0041	1.87E-04	+++	7.54E-01
Neutrophils	rs3802073	7	92402480	t	c	0.3564	0.0052	0.0041	2.05E-01	++-	1.01E-02
Neutrophils	rs41461052	7	92407600	t	c	0.0564	0.0245	0.0158	1.21E-01	??+	1.00E+00
<b>Neutrophils</b>	<b>rs445</b>	<b>7</b>	<b>92408370</b>	<b>t</b>	<b>c</b>	<b>0.3892</b>	<b>-0.0093</b>	<b>0.0041</b>	<b>2.44E-02</b>	<b>+++</b>	<b>8.29E-11</b>
Neutrophils	rs8	7	92408329	t	c	0.3711	0.002	0.0061	7.44E-01	?+-	6.30E-01
Neutrophils	rs10223710	6	32218681	a	g	0.5313	-0.0066	0.0035	5.85E-02	---	4.40E-01
Neutrophils	rs10456405	6	32212867	t	g	0.1217	-0.0076	0.0062	2.19E-01	?--	9.32E-01
Neutrophils	rs12525893	6	32220577	t	c	0.3564	0.0017	0.0037	6.53E-01	++-	8.87E-02
Neutrophils	rs13194642	6	32211695	t	c	0.3186	0.0039	0.0045	3.89E-01	++-	3.39E-01
Neutrophils	rs1559876	6	32215769	c	g	0.3299	0.0062	0.0032	5.55E-02	++-	7.10E-02
Neutrophils	rs17576984	6	32212985	t	c	0.27	-0.0114	0.0046	1.28E-02	---	1.47E-01
Neutrophils	rs2395110	6	32215876	a	g	0.5005	-9.00E-04	0.0041	8.23E-01	+?-	1.83E-03
Neutrophils	rs2395111	6	32215964	t	c	0.4188	-0.0124	0.003	2.85E-05	---	4.57E-01
Neutrophils	rs2515892	6	32215252	t	g	0.5302	0.0127	0.0029	1.62E-05	+++	4.26E-01
Neutrophils	rs2894239	6	32215796	t	g	0.4538	-0.0129	0.0031	2.25E-05	---	5.34E-01
Neutrophils	rs2894240	6	32217846	a	g	0.4249	0.0063	0.003	3.17E-02	++-	4.23E-04
Neutrophils	rs3096700	6	32221782	a	c	0.3014	-0.0067	0.0046	1.52E-01	-?+	9.48E-03
Neutrophils	rs3115571	6	32220918	a	g	0.3473	-0.0121	0.0032	1.68E-04	--+	2.74E-03
Neutrophils	rs3115572	6	32220484	c	g	0.3515	-0.0125	0.0032	7.21E-05	--+	4.39E-03
Neutrophils	rs3115573	6	32218843	a	g	0.5346	-0.0039	0.0032	2.16E-01	--+	1.61E-03

Table S1. Random-effects meta-analysis of MANTRA identified loci.

Neutrophils	rs3115575	6	32216891	t	g	0.4655	-0.013	0.003	1.11E-05	---	4.64E-01
Neutrophils	rs3115576	6	32216850	a	t	0.426	0.0063	0.003	3.33E-02	++-	4.52E-04
Neutrophils	rs3130304	6	32207181	a	g	0.186	-0.0112	0.004	4.82E-03	---	7.30E-01
Neutrophils	rs3130309	6	32215472	a	g	0.3463	-0.0125	0.0032	8.62E-05	--+	3.82E-03
Neutrophils	rs3130310	6	32216911	c	g	0.524	-0.0063	0.003	3.26E-02	--+	5.28E-04
Neutrophils	rs3130311	6	32217367	a	g	0.5235	-0.0062	0.003	3.55E-02	--+	3.41E-04
Neutrophils	rs3130315	6	32220685	a	g	0.4244	0.0041	0.0032	2.00E-01	++-	1.97E-03
Neutrophils	rs3130316	6	32221228	t	c	0.4034	-0.0153	0.0032	1.90E-06	---	2.96E-01
Neutrophils	rs3130320	6	32223258	t	c	0.4139	-0.0154	0.0048	1.32E-03	-?-	3.51E-01
Neutrophils	rs371156	6	32209963	t	c	0.431	-0.0074	0.0032	2.08E-02	---	6.95E-01
Neutrophils	rs382259	6	32209027	t	c	0.438	-0.0082	0.0034	1.46E-02	---	6.08E-01
Neutrophils	rs405875	6	32215188	t	c	0.4207	-0.0125	0.003	2.36E-05	---	5.05E-01
Neutrophils	rs410283	6	32215198	t	g	0.5295	0.0126	0.003	1.90E-05	+++	4.50E-01
Neutrophils	rs411326	6	32211317	t	c	0.4329	-0.0044	0.0034	1.99E-01	-+-	1.67E-03
Neutrophils	rs412492	6	32213831	a	t	0.4785	-0.006	0.003	4.38E-02	--+	3.90E-04
Neutrophils	rs412657	6	32211085	t	g	0.4331	0.0058	0.0031	6.47E-02	++-	6.92E-01
Neutrophils	rs416352	6	32207393	t	g	0.4314	0.0017	0.0031	5.78E-01	--+	4.15E-03
Neutrophils	rs419132	6	32210799	a	g	0.4703	-0.0025	0.0032	4.29E-01	--+	1.17E-01
Neutrophils	rs424232	6	32208324	t	c	0.3828	-7.00E-04	0.0033	8.43E-01	++-	1.30E-01
Neutrophils	rs427037	6	32212264	a	g	0.5252	-0.0021	0.0033	5.22E-01	--+	3.73E-02
Neutrophils	rs440169	6	32213788	a	g	0.4294	0.0066	0.003	2.88E-02	++-	1.19E-04
Neutrophils	rs454748	6	32213210	a	g	0.5132	0.0074	0.003	1.33E-02	++-	1.44E-03
Neutrophils	rs454875	6	32213008	a	g	0.1384	0.0059	0.005	2.39E-01	+++	3.04E-01
Neutrophils	rs4959090	6	32219962	a	g	0.2316	0.0047	0.0037	1.98E-01	++-	3.58E-01
Neutrophils	rs507778	6	32209861	t	c	0.423	0.0012	0.0031	6.99E-01	++-	3.38E-02
Neutrophils	rs563412	6	32215063	a	g	0.4711	0.006	0.0029	4.22E-02	++-	4.22E-04
Neutrophils	rs6457508	6	32216963	t	c	0.4857	0.0129	0.003	1.32E-05	+++	5.33E-01
Neutrophils	rs6457509	6	32217018	c	g	0.4247	0.0061	0.003	3.80E-02	++-	3.88E-04
Neutrophils	rs6457510	6	32217046	t	c	0.4854	0.0128	0.003	1.52E-05	+++	5.35E-01
Neutrophils	rs6457515	6	32223785	c	g	0.2382	-0.0095	0.0035	6.52E-03	--+	5.07E-03
Neutrophils	rs6457516	6	32223830	a	t	0.5404	0.0101	0.0035	3.93E-03	++-	1.28E-02
Neutrophils	rs6908927	6	32224489	a	g	0.2385	-0.01	0.0035	4.11E-03	--+	1.30E-02
Neutrophils	rs6914780	6	32216529	a	t	0.0756	0.0063	0.0068	3.52E-01	++-	9.14E-01
Neutrophils	rs6915612	6	32218625	a	g	0.0628	0.0116	0.0145	4.22E-01	??+	1.00E+00
Neutrophils	rs6916062	6	32219041	t	c	0.4791	0.0033	0.0086	7.01E-01	?+-	3.03E-01
Neutrophils	rs6921945	6	32220037	a	c	0.5291	-0.0062	0.0035	7.55E-02	---	5.29E-01
<b>Neutrophils</b>	<b>rs6936204</b>	<b>6</b>	<b>32217092</b>	<b>t</b>	<b>c</b>	<b>0.4321</b>	<b>-0.0196</b>	<b>0.0035</b>	<b>2.72E-08</b>	<b>---</b>	<b>1.85E-01</b>
Neutrophils	rs9267947	6	32211218	a	g	0.3727	0.0013	0.0032	6.78E-01	++-	2.08E-02

Table S1. Random-effects meta-analysis of MANTRA identified loci.

Neutrophils	rs9267948	6	32212233	a	g	0.6607	-0.0015	0.0034	6.61E-01	--+	2.82E-01
Neutrophils	rs9267954	6	32213052	a	t	0.826	-0.0059	0.0055	2.84E-01	-?-	7.49E-01
Neutrophils	rs9267955	6	32213150	a	g	0.0973	0.0033	0.012	7.84E-01	??+	1.00E+00
Neutrophils	rs9267956	6	32213638	a	g	0.6011	-0.0039	0.0035	2.61E-01	--+	9.66E-02
Neutrophils	rs9267958	6	32214616	a	c	0.5235	-0.0062	0.003	3.67E-02	--+	2.85E-04
Neutrophils	rs9267970	6	32217160	a	g	0.5211	-0.0059	0.003	4.45E-02	--+	3.12E-04
Neutrophils	rs9267971	6	32217185	t	c	0.4639	-0.013	0.003	1.13E-05	---	4.42E-01
Neutrophils	rs9267992	6	32220397	a	g	0.9256	-0.0033	0.0127	7.95E-01	??-	1.00E+00
Neutrophils	rs9268000	6	32223531	a	c	0.5759	-0.0073	0.0033	2.56E-02	--+	7.84E-02
Neutrophils	rs9296013	6	32216147	a	c	0.686	0.0098	0.0059	9.56E-02	+--	4.43E-03
Neutrophils	rs9296015	6	32218989	a	g	0.2758	0.0085	0.0036	1.97E-02	+++	2.37E-01
Neutrophils	rs9296016	6	32219010	a	t	0.2668	0.0063	0.0035	7.07E-02	+++	5.09E-01
Neutrophils	rs9357138	6	32219838	t	c	0.3014	0.0045	0.0046	3.29E-01	--+	3.08E-01
<b>Neutrophils</b>	<b>rs8078723</b>	<b>17</b>	<b>38166879</b>	<b>t</b>	<b>c</b>	<b>0.4046</b>	<b>-0.0307</b>	<b>3.00E-03</b>	<b>5.02E-24</b>	<b>--+</b>	<b>4.23E-08</b>
<b>Neutrophils</b>	<b>rs4794822</b>	<b>17</b>	<b>38156712</b>	<b>t</b>	<b>c</b>	<b>0.496</b>	<b>3.12E-02</b>	<b>3.00E-03</b>	<b>8.55E-25</b>	<b>++-</b>	<b>2.05E-07</b>
WBC count	rs16841659	1	159053650	c	g	0.9141	0.0122	0.004	2.33E-03	-?+	2.62E-07
WBC count	rs16841682	1	159064818	a	c	0.6964	0.0017	0.0029	5.61E-01	--+	4.63E-01
WBC count	rs1894043	1	159069211	t	c	0.2701	0.0166	0.0022	6.13E-14	+++	5.79E-166
WBC count	rs2078724	1	159072108	t	c	0.5111	0.0334	0.0032	2.84E-25	?-+	4.32E-18
WBC count	rs2518561	1	159055124	t	c	0.5007	0.0343	0.0031	1.37E-28	?-+	9.41E-18
WBC count	rs2518562	1	159055656	t	c	0.5229	-0.02	0.0022	2.42E-20	++-	1.45E-40
<b>WBC count</b>	<b>rs2518564</b>	<b>1</b>	<b>159062436</b>	<b>a</b>	<b>g</b>	<b>0.4639</b>	<b>0.0365</b>	<b>0.0021</b>	<b>6.92E-69</b>	<b>+++</b>	<b>6.98E-258</b>
WBC count	rs2518565	1	159070113	a	g	0.3318	-0.0236	0.0021	1.46E-29	+--	1.46E-58
WBC count	rs2814762	1	159068326	a	g	0.6498	0.053	0.0039	2.60E-42	?++	1.64E-04
WBC count	rs2814764	1	159064568	a	t	0.354	-0.0273	0.0021	2.12E-39	---	3.17E-79
WBC count	rs2852720	1	159060560	t	c	0.3129	0.038	0.0027	4.16E-45	+++	2.71E-41
WBC count	rs2852721	1	159068064	t	c	0.6737	0.0472	0.0044	4.39E-27	--+	4.83E-08
WBC count	rs855866	1	159052720	a	g	0.3516	-0.0348	0.0021	6.43E-64	---	1.98E-203
WBC count	rs855867	1	159052847	a	g	0.4913	0.0276	0.0021	2.27E-39	+++	2.73E-83
WBC count	rs1371798	4	74976781	t	c	0.4882	-0.0058	0.0018	1.56E-03	--+	6.75E-11
<b>WBC count</b>	<b>rs1371799</b>	<b>4</b>	<b>74977837</b>	<b>t</b>	<b>c</b>	<b>0.4361</b>	<b>0.0052</b>	<b>0.0018</b>	<b>4.28E-03</b>	<b>++-</b>	<b>1.09E-12</b>
WBC count	rs1866755	4	74978340	t	c	0.4908	-0.0053	0.0018	3.59E-03	--+	2.30E-12
WBC count	rs1893319	4	74973129	t	c	0.4683	0.0111	0.0019	9.67E-09	+++	2.51E-01
WBC count	rs505197	4	74968560	t	c	0.9264	-0.0037	0.0143	7.94E-01	+?-	6.04E-01
WBC count	rs549280	4	74971196	a	g	0.4733	-0.011	0.0018	4.17E-10	---	7.41E-01
WBC count	rs551055	4	74981560	a	g	0.9486	-0.0086	0.014	5.39E-01	??-	1.00E+00
WBC count	rs7667376	4	74967890	t	c	0.4918	-0.005	0.0018	5.41E-03	--+	2.92E-12
WBC count	rs10484494	6	135430093	a	g	0.0945	-0.0127	0.0053	1.66E-02	?-+	1.18E-02

Table S1. Random-effects meta-analysis of MANTRA identified loci.

WBC count	rs1074849	6	135423412	a	g	0.2266	0.0039	0.0022	7.07E-02	+++	4.29E-01
WBC count	rs11154792	6	135431640	t	c	0.5275	0.0131	0.0026	5.39E-07	+-?	5.35E-04
WBC count	rs11759553	6	135422296	a	t	0.5257	0.0108	0.0018	3.08E-09	+-	1.43E-04
WBC count	rs1411919	6	135432061	a	g	0.5694	-0.0047	0.0021	2.39E-02	---	6.19E-01
WBC count	rs2223385	6	135435171	a	g	0.2643	0.003	0.002	1.24E-01	+++	9.16E-01
WBC count	rs4895440	6	135426558	a	t	0.5299	0.0107	0.0018	4.87E-09	+-	5.78E-05
<b>WBC count</b>	<b>rs4895441</b>	<b>6</b>	<b>135426573</b>	<b>a</b>	<b>g</b>	<b>0.5376</b>	<b>0.0131</b>	<b>0.002</b>	<b>2.50E-11</b>	<b>+++</b>	<b>1.63E-02</b>
WBC count	rs6920211	6	135431318	t	c	0.4331	0.0126	0.0019	1.98E-11	+++	1.48E-02
WBC count	rs6930223	6	135424203	t	g	0.5024	-0.0095	0.0018	1.73E-07	---	6.28E-02
WBC count	rs7743042	6	135419834	a	g	0.3901	0.0058	0.0018	1.29E-03	+-	1.45E-01
WBC count	rs7743480	6	135420064	t	c	0.8608	-0.0032	0.0082	6.98E-01	??-	1.00E+00
WBC count	rs7766963	6	135432883	t	c	0.4892	0.0089	0.0018	1.05E-06	+++	6.60E-01
WBC count	rs7775698	6	135418635	t	c	0.4712	-0.0102	0.0025	3.81E-05	-?+	7.84E-04
WBC count	rs7776054	6	135418916	a	g	0.552	0.012	0.0019	2.99E-10	+++	8.84E-02
WBC count	rs9373124	6	135423209	t	c	0.4582	0.0113	0.0018	1.06E-09	+-	3.47E-04
WBC count	rs9376092	6	135427144	a	c	0.305	-0.0115	0.002	4.28E-09	--	5.63E-04
WBC count	rs9389268	6	135419631	a	g	0.553	0.0115	0.0019	1.55E-09	+++	2.31E-02
WBC count	rs9389269	6	135427159	t	c	0.4243	0.013	0.002	5.11E-11	+-	5.78E-03
WBC count	rs9399137	6	135419018	t	c	0.4372	0.0116	0.002	8.29E-09	+-	4.87E-04
WBC count	rs9402684	6	135419305	t	c	0.4589	0.006	0.0018	8.67E-04	+-	2.26E-01
WBC count	rs9402686	6	135427817	a	g	0.3027	-0.0138	0.002	4.45E-12	---	8.24E-02
WBC count	rs9483787	6	135434609	a	c	0.1372	-0.0015	0.0051	7.71E-01	??-	1.00E+00
WBC count	rs9483788	6	135435501	t	c	0.4333	0.0128	0.0021	1.39E-09	+++	4.18E-01
WBC count	rs9494140	6	135430029	t	c	0.883	-7.00E-04	0.0057	9.02E-01	??-	1.00E+00
WBC count	rs9494141	6	135430299	t	c	0.2024	0.0061	0.0045	1.78E-01	??+	1.00E+00
WBC count	rs9494144	6	135432530	t	c	0.8832	-0.0013	0.0056	8.15E-01	??-	1.00E+00
WBC count	rs9494145	6	135432552	t	c	0.466	0.0124	0.0022	1.83E-08	+++	2.33E-01
WBC count	rs10263804	7	92416590	a	g	0.8781	-0.0138	0.0057	1.48E-02	??-	1.00E+00
WBC count	rs2282995	7	92411623	a	g	0.6411	-0.0064	0.0026	1.24E-02	--	1.09E-01
WBC count	rs3731303	7	92403859	t	c	0.3141	0.0069	0.0026	7.41E-03	+++	1.55E-01
WBC count	rs3731304	7	92403660	a	c	0.0157	0.0409	0.0235	8.13E-02	??+	1.00E+00
WBC count	rs3802072	7	92403053	a	g	0.1923	0.0078	0.0023	6.82E-04	+++	2.15E-01
WBC count	rs3802073	7	92402480	t	c	0.3701	0.0023	0.0023	3.16E-01	+-	1.06E-03
WBC count	rs41461052	7	92407600	t	c	0.0578	0.0086	0.0082	2.96E-01	??+	1.00E+00
<b>WBC count</b>	<b>rs445</b>	<b>7</b>	<b>92408370</b>	<b>t</b>	<b>c</b>	<b>0.4013</b>	<b>-0.0098</b>	<b>0.0023</b>	<b>2.19E-05</b>	<b>--</b>	<b>8.92E-14</b>
WBC count	rs8	7	92408329	t	c	0.4051	0.0028	0.0037	4.55E-01	??+	8.68E-01
WBC count	rs1006122	2	113785842	c	g	0.5553	-3.00E-04	0.0024	9.04E-01	+-	5.58E-01
WBC count	rs1013477	2	113777408	t	c	0.3527	-0.0016	0.0019	3.78E-01	-+	7.87E-02

Table S1. Random-effects meta-analysis of MANTRA identified loci.

WBC count	rs10165797	2	113828450	a	c	0.4294	-0.004	0.0018	2.39E-02	---	6.89E-01
WBC count	rs10169599	2	113838652	t	c	0.3387	0.002	0.002	3.38E-01	++-	1.27E-01
WBC count	rs10176274	2	113840575	c	g	0.5542	-0.0096	0.0021	7.81E-06	---	5.14E-01
WBC count	rs10179714	2	113805118	a	g	0.1941	-0.0061	0.0028	2.97E-02	-?+	9.58E-02
WBC count	rs10181720	2	113838608	a	g	0.4625	-0.0044	0.002	2.98E-02	---	7.17E-01
WBC count	rs10184259	2	113838628	t	c	0.5216	-0.0022	0.002	2.75E-01	--+	9.61E-02
WBC count	rs10184277	2	113823485	t	c	0.2994	-0.0076	0.0032	1.77E-02	-?+	1.38E-01
WBC count	rs10185781	2	113849150	a	c	0.2666	-0.0046	0.0022	3.25E-02	--+	1.56E-01
WBC count	rs10186133	2	113836944	t	g	0.3634	0.0037	0.0019	5.57E-02	++-	3.67E-02
WBC count	rs10188292	2	113840443	a	t	0.5807	-0.0091	0.0021	1.52E-05	---	1.83E-01
WBC count	rs10192014	2	113922412	a	g	0.3613	0.0015	0.0036	6.67E-01	??+	6.96E-01
WBC count	rs10199363	2	113840791	a	g	0.9191	0.0144	0.005	3.73E-03	??+	5.58E-01
WBC count	rs10205381	2	113753124	a	g	0.1217	5.00E-04	0.0056	9.28E-01	??+	1.00E+00
WBC count	rs10206428	2	113826475	a	g	0.3829	-0.0048	0.0018	7.06E-03	---	2.56E-01
WBC count	rs10207930	2	113860861	a	c	0.4591	0.0041	0.0018	2.72E-02	++-	6.02E-03
WBC count	rs10496447	2	113782059	a	g	0.5997	0.0019	0.003	5.31E-01	--+	3.98E-02
WBC count	rs10496448	2	113828690	c	g	0.197	-0.0083	0.0029	4.83E-03	-?-	6.23E-01
WBC count	rs10514809	2	113781077	t	c	0.022	-0.0031	0.0187	8.69E-01	??-	1.00E+00
WBC count	rs10864909	2	113750230	a	g	0.4359	0.0025	0.002	2.04E-01	++-	3.01E-01
WBC count	rs10864910	2	113935222	t	c	0.5149	0	0.0021	9.87E-01	++-	4.71E-01
WBC count	rs11123158	2	113811057	a	g	0.2844	-0.0062	0.0025	1.39E-02	-?-	3.25E-01
WBC count	rs11123159	2	113834030	t	c	0.451	0.0049	0.0024	3.56E-02	++-	6.21E-02
WBC count	rs11123161	2	113845578	t	c	0.37	-3.00E-04	0.0018	8.57E-01	-+-	4.59E-04
WBC count	rs11123162	2	113850114	a	g	0.4476	-0.0022	0.002	2.65E-01	++-	3.71E-02
WBC count	rs11123167	2	113906869	c	g	0.3792	0.0055	0.0021	7.77E-03	+++	6.62E-01
WBC count	rs1156701	2	113827845	a	g	0.09	0.0012	0.0031	6.94E-01	++-	1.58E-01
WBC count	rs11677140	2	113865808	a	c	0.5441	2.00E-04	0.0022	9.11E-01	-+-	3.03E-01
WBC count	rs11677407	2	113845029	t	c	0.3456	-0.0042	0.0022	5.36E-02	--+	8.75E-02
WBC count	rs11678375	2	113835691	t	c	0.5782	-0.0039	0.0019	4.44E-02	--+	3.72E-02
WBC count	rs11681884	2	113847628	t	c	0.3522	-0.0044	0.0021	4.18E-02	--+	1.50E-01
WBC count	rs11684289	2	113845038	t	g	0.4912	0.0036	0.0021	9.64E-02	++-	4.58E-02
WBC count	rs11684719	2	113842401	a	g	0.2257	-0.0089	0.0022	7.35E-05	---	7.36E-01
WBC count	rs11687782	2	113841782	a	t	0.464	0.0036	0.0019	5.40E-02	++-	6.19E-04
WBC count	rs11687786	2	113811731	t	g	0.6431	7.00E-04	0.0026	7.99E-01	-?+	1.57E-01
WBC count	rs11693683	2	113850653	a	t	0.3944	0.0046	0.0031	1.46E-01	+++	6.89E-02
WBC count	rs11883847	2	113792171	t	c	0.4891	0.0019	0.0037	6.01E-01	?-+	7.66E-03
WBC count	rs11885498	2	113900177	a	g	0.5914	-0.0056	0.0021	7.00E-03	---	8.64E-01
WBC count	rs11886754	2	113844342	c	g	0.5648	0.0056	0.0021	8.03E-03	+++	3.53E-01

Table S1. Random-effects meta-analysis of MANTRA identified loci.

WBC count	rs11891198	2	113844229	a	g	0.5745	0.0056	0.0022	1.04E-02	+++	3.58E-01
WBC count	rs11893386	2	113844310	t	c	0.4927	0.0041	0.0022	5.97E-02	++-	7.29E-02
WBC count	rs11896207	2	113850882	t	c	0.7353	-0.0111	0.0052	3.35E-02	?+-	4.49E-02
WBC count	rs11897481	2	113851439	t	c	0.3521	-0.0045	0.0021	3.79E-02	--+	1.63E-01
WBC count	rs11898158	2	113823572	a	g	0.5168	0.0098	0.0035	4.71E-03	?++	1.65E-01
WBC count	rs11898742	2	113845392	a	g	0.0721	0.002	0.0103	8.46E-01	??+	1.00E+00
WBC count	rs11899198	2	113840539	t	g	0.3744	-0.0022	0.0022	3.38E-01	--+	5.28E-04
WBC count	rs12328368	2	113847144	c	g	0.5653	-0.0109	0.0021	1.21E-07	---	2.28E-01
WBC count	rs12328766	2	113846738	a	g	0.5217	-0.0098	0.0021	3.43E-06	---	4.62E-01
WBC count	rs12329129	2	113847007	a	g	0.3445	0.0108	0.0021	2.00E-07	+++	2.27E-01
WBC count	rs12466799	2	113835999	t	c	0.566	-0.0025	0.0021	2.33E-01	--+	2.52E-01
WBC count	rs12469822	2	113830563	a	g	0.3218	0.0038	0.0019	4.90E-02	++-	5.14E-01
WBC count	rs12614131	2	113924738	t	c	0.5134	0.0026	0.0034	4.55E-01	??+	7.17E-01
WBC count	rs12475161	2	113823626	t	c	0.4316	-0.0014	0.0018	4.44E-01	--+	1.01E-03
WBC count	rs12475781	2	113916912	t	g	0.3051	0.0042	0.002	3.57E-02	+++	4.29E-01
WBC count	rs12475887	2	113849986	a	c	0.4035	-2.00E-04	0.0024	9.50E-01	++-	1.23E-01
WBC count	rs12614131	2	113930867	t	c	0.3588	0.0018	0.0027	5.04E-01	++-	1.20E-01
WBC count	rs12711746	2	113752247	a	c	0.4277	0.0032	0.002	9.87E-02	++-	3.19E-01
WBC count	rs12711747	2	113785020	a	g	0.4022	2.00E-04	0.002	9.34E-01	-+-	2.82E-01
WBC count	rs12711749	2	113829709	a	g	0.4848	-0.0015	0.0018	4.12E-01	-+-	9.60E-02
WBC count	rs12711751	2	113837765	t	g	0.5337	-0.0023	0.002	2.59E-01	--+	2.61E-02
WBC count	rs12711752	2	113837840	t	c	0.562	-9.00E-04	0.002	6.36E-01	--+	5.91E-01
WBC count	rs12711762	2	113932800	t	c	0.3161	-3.00E-04	0.002	9.02E-01	--+	5.81E-01
WBC count	rs12711763	2	113932811	c	g	0.7857	-0.0045	0.0032	1.60E-01	-+-	7.50E-01
WBC count	rs12711765	2	113936036	a	g	0.5017	-0.0028	0.0039	4.74E-01	??-	1.00E+00
WBC count	rs128964	2	113887803	a	g	0.4888	0.0059	0.0026	2.27E-02	+++	6.79E-01
WBC count	rs13011842	2	113833570	t	c	0.3867	-0.0027	0.0026	2.87E-01	--+	5.64E-01
WBC count	rs13019891	2	113829869	t	g	0.4386	0.0038	0.002	6.20E-02	+++	9.47E-01
WBC count	rs13030546	2	113840014	a	g	0.5508	0.0031	0.0027	2.48E-01	++-	4.04E-01
WBC count	rs13033104	2	113756777	t	g	0.4674	0.0049	0.002	1.24E-02	++-	4.90E-01
WBC count	rs13382561	2	113863536	a	g	0.5636	-0.0104	0.0021	1.28E-06	---	1.52E-01
WBC count	rs13386602	2	113834820	a	c	0.5207	-0.006	0.0019	1.77E-03	---	5.82E-01
WBC count	rs13389431	2	113851830	a	g	0.0884	2.00E-04	0.0064	9.75E-01	??+	1.00E+00
WBC count	rs13398728	2	113842506	t	c	0.4349	-0.0052	0.0021	1.33E-02	--+	3.38E-04
WBC count	rs13404928	2	113866525	a	g	0.2362	-2.00E-04	0.0022	9.23E-01	--+	4.49E-01
WBC count	rs13406085	2	113861561	a	g	0.2624	-0.005	0.0022	2.05E-02	---	2.77E-01
WBC count	rs13407508	2	113794759	t	c	0.6701	8.00E-04	0.0024	7.38E-01	+?-	2.20E-02
WBC count	rs13409360	2	113838102	a	g	0.3925	0.0056	0.0021	7.74E-03	+++	7.97E-02

Table S1. Random-effects meta-analysis of MANTRA identified loci.

WBC count	rs13409371	2	113838145	a	g	0.4052	0.0057	0.0021	6.81E-03	+++	1.20E-01
WBC count	rs13410552	2	113855406	c	g	0.5813	0.0043	0.0022	4.67E-02	++-	1.36E-01
WBC count	rs13410964	2	113843283	a	g	0.3262	0.0096	0.0021	5.35E-06	+++	2.22E-01
WBC count	rs13414333	2	113752731	a	g	0.9226	0.0044	0.0069	5.23E-01	??+	1.00E+00
WBC count	rs13419549	2	113933726	t	c	0.3229	-4.00E-04	0.0034	9.13E-01	+--	2.78E-01
WBC count	rs13424580	2	113852564	a	g	0.3039	0.0086	0.0022	9.81E-05	+++	1.13E-01
WBC count	rs1374280	2	113796666	t	c	0.4015	6.00E-04	0.0021	7.68E-01	-++	8.49E-01
WBC count	rs1374281	2	113898789	c	g	0.5901	-0.0051	0.0021	1.35E-02	---	8.37E-01
WBC count	rs1374284	2	113753583	t	c	0.5857	-9.00E-04	0.002	6.58E-01	-++	8.74E-02
WBC count	rs1446509	2	113851159	a	t	0.5637	-0.0105	0.0021	5.29E-07	---	2.65E-01
WBC count	rs1446510	2	113851517	t	c	0.4689	0.0015	0.0022	4.83E-01	++-	6.01E-06
WBC count	rs1446511	2	113762543	t	c	0.4751	-6.00E-04	0.0026	8.05E-01	?+-	3.87E-01
WBC count	rs1446512	2	113762532	t	g	0.4751	-6.00E-04	0.0026	8.28E-01	?+-	3.78E-01
WBC count	rs1446514	2	113757973	t	g	0.2951	5.00E-04	0.0023	8.18E-01	?-+	3.78E-01
WBC count	rs1446515	2	113757654	a	t	0.4745	-0.002	0.0023	3.92E-01	?--	5.66E-01
WBC count	rs1446516	2	113750470	a	g	0.5939	-0.0025	0.0023	2.89E-01	+--	1.59E-01
WBC count	rs1446519	2	113822448	t	c	0.3881	-0.0053	0.0029	7.11E-02	?-+	2.03E-02
WBC count	rs1446521	2	113827396	a	g	0.4857	0.0022	0.0026	4.08E-01	+++	4.93E-01
WBC count	rs1446522	2	113827503	c	g	0.0934	7.00E-04	0.0031	8.14E-01	++-	1.26E-01
WBC count	rs1530549	2	113817455	t	c	0.3364	-0.0046	0.003	1.26E-01	---	5.52E-01
WBC count	rs1530550	2	113817513	a	t	0.5784	0.0046	0.0022	3.25E-02	-++	6.88E-02
WBC count	rs1530551	2	113817566	t	c	0.482	0.0018	0.0022	4.06E-01	+ +-	2.46E-02
WBC count	rs1542176	2	113849837	t	c	0.3579	-0.0013	0.0019	4.90E-01	-+-	3.66E-03
WBC count	rs1562302	2	113810458	a	g	0.3777	0.0011	0.002	5.89E-01	+--	1.85E-01
WBC count	rs1562303	2	113782392	t	c	0.2935	0.0073	0.004	6.89E-02	??+	1.00E+00
WBC count	rs1562305	2	113751613	a	g	0.3701	0.0028	0.002	1.62E-01	++-	4.51E-01
WBC count	rs1562306	2	113751380	a	g	0.2937	0.002	0.0023	3.86E-01	-++	7.36E-01
WBC count	rs1596894	2	113754754	t	c	0.4851	6.00E-04	0.0025	7.96E-01	?+-	8.15E-01
WBC count	rs1630153	2	113869803	t	c	0.34	0.0032	0.0019	8.82E-02	-++	5.83E-03
WBC count	rs1665188	2	113852789	c	g	0.0769	-0.0143	0.0054	7.89E-03	-?-	4.03E-01
WBC count	rs1688072	2	113869347	a	g	0.4789	0.0059	0.0029	3.90E-02	+++	1.35E-01
WBC count	rs1688075	2	113858196	a	c	0.3855	-0.0016	0.0025	5.22E-01	-++	8.58E-02
WBC count	rs17042691	2	113745812	t	c	0.34	3.00E-04	0.0022	8.92E-01	-+-	4.36E-02
WBC count	rs17042709	2	113788100	a	g	0.2321	-0.0065	0.0027	1.63E-02	-?-	8.09E-01
WBC count	rs17042712	2	113788194	c	g	0.7978	0.001	0.0047	8.33E-01	?+-	5.56E-02
WBC count	rs17042750	2	113823151	t	g	0.0983	-0.0038	0.0037	3.01E-01	?+-	1.42E-03
WBC count	rs17042751	2	113823365	t	c	0.395	0.0019	0.0026	4.67E-01	++-	4.02E-01
WBC count	rs17042755	2	113824585	c	g	0.1835	0.0023	0.0026	3.78E-01	+++	4.61E-01



Table S1. Random-effects meta-analysis of MANTRA identified loci.

WBC count	rs17042786	2	113827859	t	c	0.4314	-0.007	0.0026	7.70E-03	-?-	3.96E-01
WBC count	rs17042795	2	113829840	a	g	0.6782	-0.016	0.0039	3.61E-05	?--	4.31E-01
WBC count	rs17042810	2	113838569	t	c	0.3626	-0.0026	0.0025	3.03E-01	--+	1.93E-04
WBC count	rs17042815	2	113839857	c	g	0.0865	0.0151	0.0052	3.47E-03	?++	4.88E-01
WBC count	rs17042819	2	113840039	a	g	0.7307	-0.0127	0.0051	1.26E-02	?--	6.53E-01
WBC count	rs17042827	2	113840657	a	g	0.9737	-0.0179	0.0116	1.24E-01	??-	1.00E+00
WBC count	rs17042828	2	113840934	t	c	0.087	0.0112	0.0051	2.76E-02	?-+	3.92E-02
WBC count	rs17042833	2	113842279	t	c	0.7301	-0.0093	0.0051	6.87E-02	?+-	6.32E-02
WBC count	rs17042838	2	113843337	a	g	0.1572	3.00E-04	0.0049	9.52E-01	??+	1.00E+00
WBC count	rs17042842	2	113843481	a	g	0.7399	-0.016	0.0049	1.21E-03	?--	4.29E-01
WBC count	rs17042853	2	113848200	a	t	0.2659	-0.0054	0.0021	1.14E-02	---	3.61E-01
WBC count	rs17042869	2	113849691	a	g	0.0419	0.0255	0.0093	5.90E-03	??+	1.00E+00
WBC count	rs17042888	2	113862173	a	g	0.1744	-0.0094	0.0024	8.74E-05	---	4.56E-01
WBC count	rs17042894	2	113864047	a	g	0.0704	0.0152	0.0054	4.62E-03	?++	5.09E-01
WBC count	rs17042905	2	113867956	t	c	0.36	-0.0027	0.0024	2.61E-01	--+	5.60E-05
WBC count	rs17042917	2	113870663	a	g	0.1702	-0.0096	0.0024	7.04E-05	---	2.02E-01
WBC count	rs17043030	2	113926885	t	c	0.709	-0.0028	0.0042	4.99E-01	?+-	1.26E-01
WBC count	rs17043031	2	113930864	a	g	0.8963	0.0043	0.0069	5.38E-01	+?+	6.99E-01
WBC count	rs17043037	2	113932352	t	g	0.0471	0.0162	0.0144	2.61E-01	??+	1.00E+00
WBC count	rs17043041	2	113933432	t	g	0.9406	-0.0044	0.0113	6.98E-01	??-	1.00E+00
WBC count	rs17043051	2	113933804	t	c	0.5665	-0.0015	0.0028	5.86E-01	-?+	3.67E-02
WBC count	rs17043057	2	113934413	t	c	0.9525	-0.0164	0.0142	2.48E-01	??-	1.00E+00
WBC count	rs17043069	2	113935807	t	g	0.8678	0.0042	0.0059	4.74E-01	??+	1.00E+00
WBC count	rs17207494	2	113864010	a	c	0.582	-0.0088	0.0022	6.34E-05	---	7.57E-02
WBC count	rs17486819	2	113871806	t	g	0.0808	-0.0027	0.004	4.90E-01	?+-	1.86E-03
WBC count	rs17624213	2	113933247	t	g	0.2778	-0.0027	0.0026	3.07E-01	---	9.52E-01
WBC count	rs17660913	2	113782329	a	g	0.559	7.00E-04	0.0028	8.09E-01	--+	2.30E-02
WBC count	rs17669228	2	113847712	t	c	0.3496	0.0059	0.003	4.71E-02	+?+	4.05E-03
WBC count	rs1794066	2	113886350	a	g	0.4233	0.0042	0.0018	1.74E-02	+++	3.37E-02
WBC count	rs1794067	2	113886384	a	g	0.2199	-0.0037	0.0023	1.09E-01	0	5.57E-01
WBC count	rs1794068	2	113886503	a	g	0.2078	-0.0063	0.0026	1.48E-02	---	5.55E-01
WBC count	rs1800930	2	113820530	a	g	0.2762	-0.009	0.0025	2.68E-04	-?-	7.17E-01
WBC count	rs1867761	2	113922983	t	c	0.328	0.0038	0.0029	1.91E-01	+++	9.74E-01
WBC count	rs1867828	2	113768620	a	g	0.3852	0.0038	0.0019	4.60E-02	+++	7.01E-01
WBC count	rs1867829	2	113839151	a	g	0.46	0.0039	0.0021	6.36E-02	++	7.81E-02
WBC count	rs1867831	2	113773561	t	c	0.4248	1.00E-04	0.0025	9.80E-01	+++	3.97E-01
WBC count	rs1867834	2	113828099	t	c	0.4276	0.0039	0.0021	5.65E-02	+++	9.69E-01
WBC count	rs1900287	2	113797565	a	g	0.5339	1.00E-04	0.0025	9.62E-01	-?+	8.78E-01

Table S1. Random-effects meta-analysis of MANTRA identified loci.

WBC count	rs1992761	2	113810286	a	g	0.113	-0.0091	0.0035	9.09E-03	?--	3.68E-01
WBC count	rs2029582	2	113863771	t	c	0.6258	6.00E-04	0.0018	7.34E-01	++	6.56E-04
WBC count	rs2071459	2	113887483	t	c	0.567	7.00E-04	0.0021	7.23E-01	++	4.25E-01
WBC count	rs2100071	2	113825386	a	c	0.522	0	0.0025	9.96E-01	+-	8.73E-01
WBC count	rs2121326	2	113846975	c	g	0.1516	-0.0064	0.0028	2.14E-02	---	9.58E-02
WBC count	rs2121329	2	113852629	a	c	0.2608	-0.0045	0.0022	3.56E-02	--+	1.26E-01
WBC count	rs2197578	2	113790553	a	g	0.5528	-5.00E-04	0.0023	8.31E-01	-+-	7.85E-01
WBC count	rs2248588	2	113898710	t	c	0.7957	0.0019	0.0067	7.76E-01	??+	1.00E+00
WBC count	rs2248596	2	113898827	a	g	0.1956	8.00E-04	0.0047	8.66E-01	??+	1.00E+00
WBC count	rs2248600	2	113898879	a	g	0.8494	0.0012	0.0076	8.75E-01	??+	1.00E+00
WBC count	rs2248604	2	113898932	a	c	0.1594	-0.0013	0.0071	8.55E-01	??-	1.00E+00
WBC count	rs2305150	2	113789316	t	c	0.5366	0.0015	0.0018	4.01E-01	++	2.62E-01
WBC count	rs2305152	2	113763463	a	c	0.5444	0.0047	0.0021	2.41E-02	++	7.75E-01
WBC count	rs2472188	2	113820814	c	g	0.3273	-0.0056	0.0018	2.19E-03	---	1.48E-01
WBC count	rs2515401	2	113820476	t	c	0.4305	-0.0014	0.0018	4.32E-01	--+	2.15E-03
WBC count	rs2515402	2	113820580	a	c	0.6096	0.0054	0.0019	4.64E-03	+++	9.77E-02
WBC count	rs2515404	2	113821117	t	c	0.3949	-7.00E-04	0.0026	7.97E-01	+-	5.16E-01
WBC count	rs2515406	2	113822168	t	c	0.4163	6.00E-04	0.0027	8.22E-01	+-	2.56E-01
WBC count	rs2637988	2	113876779	a	g	0.3912	0.0019	0.0018	2.97E-01	++	3.96E-01
WBC count	rs2853628	2	113880292	c	g	0.2497	-0.0031	0.0026	2.35E-01	?-+	3.50E-01
WBC count	rs2862772	2	113791482	c	g	0.5755	0.002	0.0018	2.55E-01	++	4.01E-01
WBC count	rs2862774	2	113797677	a	c	0.5307	0.003	0.0026	2.37E-01	++	3.35E-02
WBC count	rs2862853	2	113826759	t	c	0.3596	-0.001	0.0024	6.82E-01	++	3.48E-01
WBC count	rs2902452	2	113895516	a	c	0.3077	0.0047	0.0021	2.61E-02	+++	7.71E-01
WBC count	rs3087263	2	113885768	a	g	0.0757	-0.0021	0.005	6.73E-01	?--	3.24E-01
WBC count	rs3087266	2	113889100	t	c	0.5215	2.00E-04	0.002	9.11E-01	+-	1.06E-01
WBC count	rs3087270	2	113893308	a	g	0.5737	0.0031	0.0021	1.34E-01	+++	8.43E-01
WBC count	rs3087271	2	113895200	a	c	0.5097	0.0022	0.0026	3.97E-01	++	1.02E-01
WBC count	rs3099479	2	113898461	a	g	0.7958	0.0018	0.0067	7.88E-01	??+	1.00E+00
WBC count	rs315919	2	113876213	t	g	0.603	0.0017	0.0023	4.67E-01	??+	8.51E-01
WBC count	rs315920	2	113873018	t	c	0.4157	-0.0019	0.0028	4.92E-01	---	8.39E-01
WBC count	rs315921	2	113872051	a	g	0.1649	-0.0028	0.0033	3.99E-01	---	9.12E-01
WBC count	rs315922	2	113862647	t	c	0.2908	-0.0012	0.0031	7.11E-01	--+	2.68E-02
WBC count	rs315925	2	113865367	t	c	0.5852	0.0028	0.0025	2.51E-01	++	7.56E-02
WBC count	rs315927	2	113866369	t	c	0.3416	0.0028	0.0018	1.30E-01	++	9.84E-03
WBC count	rs315928	2	113868263	t	c	0.3954	8.00E-04	0.0029	7.77E-01	--+	3.64E-02
WBC count	rs315929	2	113869407	t	c	0.5832	0	0.0024	9.97E-01	+-	7.48E-02
WBC count	rs315931	2	113869843	a	c	0.3627	-0.0022	0.0019	2.27E-01	-+-	5.10E-03

Table S1. Random-effects meta-analysis of MANTRA identified loci.

WBC count	rs315932	2	113869977	t	c	0.5742	0.0024	0.0025	3.46E-01	++	1.03E-01
WBC count	rs315935	2	113881365	a	g	0.8679	-0.0024	0.0055	6.60E-01	??-	1.00E+00
WBC count	rs315936	2	113880947	t	c	0.4368	-0.0033	0.0024	1.74E-01	--+	3.17E-01
WBC count	rs315937	2	113897154	c	g	0.7557	0.0027	0.0063	6.67E-01	??+	1.00E+00
WBC count	rs315938	2	113896045	a	t	0.8452	-0.0045	0.0049	3.62E-01	??-	1.00E+00
WBC count	rs315939	2	113895403	a	c	0.8433	1.00E-04	0.0074	9.89E-01	??+	1.00E+00
WBC count	rs315940	2	113895305	t	c	0.8476	-0.0043	0.0051	4.03E-01	??-	1.00E+00
WBC count	rs315941	2	113895235	a	g	0.8435	2.00E-04	0.0074	9.79E-01	??+	1.00E+00
WBC count	rs315942	2	113895145	t	g	0.5534	-0.003	0.002	1.36E-01	--+	4.59E-01
WBC count	rs315943	2	113894338	a	g	0.5797	-0.0063	0.0021	3.15E-03	---	4.61E-01
WBC count	rs315944	2	113894187	a	g	0.147	-0.0019	0.0078	8.08E-01	??-	1.00E+00
WBC count	rs315947	2	113893839	a	g	0.4581	-0.003	0.0018	1.02E-01	---	6.24E-01
WBC count	rs315948	2	113893256	t	c	0.4328	-0.0018	0.003	5.39E-01	++	1.00E-01
WBC count	rs315949	2	113892774	a	g	0.3496	0.007	0.002	6.40E-04	+++	5.20E-01
WBC count	rs315951	2	113890586	c	g	0.399	0.0025	0.0018	1.62E-01	+++	6.82E-01
WBC count	rs315952	2	113890304	t	c	0.356	7.00E-04	0.0019	7.17E-01	-+-	1.98E-01
WBC count	rs315955	2	113889430	c	g	0.9107	-0.0127	0.0065	5.01E-02	??-	1.00E+00
WBC count	rs315957	2	113901313	t	c	0.7325	-0.0046	0.0027	8.96E-02	-?-	1.11E-01
WBC count	rs315958	2	113900851	t	g	0.5744	-0.0043	0.002	2.94E-02	---	2.56E-01
WBC count	rs3180235	2	113820672	a	g	0.3279	-0.0056	0.0018	2.39E-03	---	1.56E-01
WBC count	rs3180238	2	113820833	t	c	0.6116	0.0114	0.009	2.08E-01	??+	8.05E-01
WBC count	rs3181052	2	113886049	a	g	0.4058	4.00E-04	0.0021	8.65E-01	++	4.36E-01
WBC count	rs3181053	2	113886142	t	g	0.9512	0.0211	0.0085	1.35E-02	??+	1.00E+00
WBC count	rs3213448	2	113879297	a	g	0.4212	5.00E-04	0.0021	8.24E-01	++	4.14E-01
WBC count	rs35029104	2	113772596	t	c	0.0688	0.0041	0.0075	5.85E-01	??+	1.00E+00
WBC count	rs3748914	2	113940681	t	c	0.4307	-9.00E-04	0.0018	6.13E-01	--+	5.49E-01
WBC count	rs3752739	2	113788590	c	g	0.7706	0.0061	0.003	4.31E-02	??+	9.43E-01
WBC count	rs3762494	2	113937563	a	g	0.7537	-0.0071	0.0029	1.49E-02	-+-	3.81E-01
WBC count	rs377086	2	113878715	a	g	0.1228	0.0028	0.0055	6.13E-01	??+	2.35E-01
WBC count	rs380092	2	113888900	a	t	0.3581	8.00E-04	0.0019	6.54E-01	++	3.62E-01
WBC count	rs3811050	2	113830173	t	c	0.3958	8.00E-04	0.0021	6.92E-01	++	2.76E-02
WBC count	rs3811053	2	113830926	t	c	0.523	0.0059	0.0021	5.62E-03	+++	4.59E-01
WBC count	rs3827763	2	113831289	a	g	0.4054	0.0016	0.0019	4.07E-01	++	2.40E-01
WBC count	rs396201	2	113891775	t	c	0.4582	0.0014	0.002	4.86E-01	++	2.48E-01
WBC count	rs397211	2	113892141	t	c	0.4635	7.00E-04	0.0021	7.34E-01	++	3.43E-01
WBC count	rs408392	2	113887458	t	g	0.3666	-0.0027	0.0025	2.86E-01	--+	7.57E-02
WBC count	rs41334144	2	113766332	t	c	0.8487	0.0079	0.0086	3.61E-01	??+	1.00E+00
WBC count	rs41411944	2	113922486	t	c	0.9068	-0.0034	0.0068	6.17E-01	??-	1.00E+00

Table S1. Random-effects meta-analysis of MANTRA identified loci.

WBC count	rs4145013	2	113830688	a	g	0.5081	0.0053	0.0018	3.77E-03	+++	2.18E-01
WBC count	rs419598	2	113887207	t	c	0.3546	0.0016	0.0027	5.57E-01	++-	1.20E-01
WBC count	rs423904	2	113887262	t	c	0.3659	-0.0026	0.0025	3.06E-01	--+	8.43E-02
WBC count	rs4251955	2	113873871	a	g	0.0479	-0.0126	0.0086	1.45E-01	??-	1.00E+00
WBC count	rs4251961	2	113874467	t	c	0.4359	-0.0034	0.0022	1.12E-01	--+	2.03E-03
WBC count	rs4251967	2	113874968	c	g	0.0578	-0.0119	0.0052	2.29E-02	-?-	6.80E-01
WBC count	rs4251984	2	113877226	a	g	0.5098	0.0055	0.0026	3.49E-02	+++	8.68E-01
WBC count	rs4251985	2	113877413	t	g	0.3696	-0.0031	0.0027	2.50E-01	--+	1.09E-01
WBC count	rs4251995	2	113881050	t	g	0.9859	0.0149	0.0171	3.83E-01	??+	1.00E+00
WBC count	rs4252001	2	113883683	a	g	0.4541	0.0011	0.0021	6.12E-01	++-	3.99E-01
WBC count	rs4252012	2	113887349	a	c	0.046	0.0082	0.0089	3.54E-01	??+	1.00E+00
WBC count	rs4252019	2	113889119	t	c	0.5219	5.00E-04	0.002	8.23E-01	++-	1.01E-01
WBC count	rs4252022	2	113890161	a	g	0.0562	-0.0055	0.0082	5.04E-01	??-	1.00E+00
WBC count	rs4252033	2	113891842	a	c	0.8539	-5.00E-04	0.0052	9.24E-01	??-	1.00E+00
WBC count	rs4252035	2	113892563	t	c	0.0319	0.0072	0.016	6.52E-01	??+	1.00E+00
WBC count	rs4252036	2	113892964	a	c	0.017	0.0202	0.0149	1.76E-01	??+	1.00E+00
WBC count	rs4252041	2	113890610	t	c	0.2199	0.0097	0.0075	1.98E-01	??-	1.41E-01
WBC count	rs431726	2	113889006	t	g	0.3182	0.0031	0.0025	2.19E-01	++-	2.92E-01
WBC count	rs432014	2	113888579	t	c	0.3062	5.00E-04	0.0024	8.20E-01	++-	6.15E-03
WBC count	rs4368340	2	113845080	a	t	0.5289	-0.0032	0.0019	8.64E-02	++-	2.40E-03
WBC count	rs440286	2	113889469	a	c	0.2086	-0.0036	0.0027	1.80E-01	---	9.91E-01
WBC count	rs442710	2	113887399	a	g	0.2094	-0.0062	0.0026	1.82E-02	---	5.68E-01
WBC count	rs444413	2	113885826	a	g	0.2049	-0.0057	0.0026	2.79E-02	---	8.10E-01
WBC count	rs446433	2	113887273	a	g	0.2069	-0.0059	0.0026	2.26E-02	---	6.25E-01
WBC count	rs447713	2	113887672	a	g	0.5006	0.0057	0.0026	2.51E-02	+++	8.12E-01
WBC count	rs4496335	2	113844475	t	c	0.5066	0.0057	0.0022	8.85E-03	++-	1.16E-02
WBC count	rs451578	2	113888557	a	g	0.2049	-0.0064	0.0026	1.48E-02	---	4.27E-01
WBC count	rs452204	2	113889061	a	g	0.5077	-0.0045	0.0018	1.18E-02	++-	1.17E-01
WBC count	rs454078	2	113888793	a	t	0.4971	0.0058	0.0026	2.29E-02	+++	8.01E-01
WBC count	rs4848314	2	113839286	a	g	0.4534	0.0013	0.0024	6.05E-01	++-	5.80E-02
WBC count	rs4848316	2	113934451	t	c	0.4194	-7.00E-04	0.0018	6.81E-01	++-	7.63E-01
WBC count	rs4849136	2	113748202	t	c	0.2951	8.00E-04	0.0023	7.24E-01	?-+	2.96E-01
WBC count	rs4849142	2	113779875	a	g	0.5068	0.001	0.0019	6.06E-01	++-	6.10E-02
WBC count	rs4849143	2	113787356	c	g	0.5146	0.0011	0.0025	6.78E-01	-+-	8.09E-01
WBC count	rs4849144	2	113800049	a	g	0.2431	-7.00E-04	0.0025	7.90E-01	++-	7.70E-01
WBC count	rs4849147	2	113829236	a	t	0.2511	-0.0022	0.0026	4.04E-01	---	4.14E-01
WBC count	rs4849148	2	113829522	t	c	0.3513	4.00E-04	0.0022	8.42E-01	++-	9.80E-02
WBC count	rs4849152	2	113848574	a	g	0.5245	0.0069	0.0019	2.38E-04	+++	3.20E-01

Table S1. Random-effects meta-analysis of MANTRA identified loci.

WBC count	rs4849153	2	113848654	t	c	0.5702	-4.00E-04	0.002	8.20E-01	++	2.45E-02
WBC count	rs4849159	2	113925061	t	c	0.309	7.00E-04	0.0022	7.34E-01	+--	2.63E-01
WBC count	rs4849160	2	113934085	a	g	0.261	-0.0013	0.0022	5.48E-01	---	8.02E-01
WBC count	rs4849163	2	113935028	t	c	0.3166	0.0017	0.0021	4.36E-01	+++	4.68E-01
WBC count	rs4849166	2	113939763	a	t	0.5418	0.0011	0.0018	5.29E-01	++	7.19E-01
WBC count	rs4849167	2	113940839	c	g	0.5217	4.00E-04	0.0018	8.09E-01	++	2.81E-01
WBC count	rs495282	2	113887294	c	g	0.2071	-0.0059	0.0026	2.27E-02	---	6.25E-01
WBC count	rs495410	2	113887338	a	c	0.9392	0.0099	0.0049	4.22E-02	??+	6.81E-01
WBC count	rs579543	2	113889631	a	g	0.215	-0.0022	0.0027	4.05E-01	---	9.34E-01
WBC count	rs6542108	2	113755190	t	c	0.3654	4.00E-04	0.0021	8.50E-01	-+-	1.32E-01
WBC count	rs6542109	2	113756821	t	c	0.3766	0.001	0.002	6.26E-01	-+-	9.79E-02
WBC count	rs6542111	2	113822559	t	c	0.0406	0.0165	0.0082	4.51E-02	??+	1.00E+00
WBC count	rs6542113	2	113859276	a	g	0.0707	0.0155	0.0055	4.85E-03	??+	4.72E-01
WBC count	rs6542114	2	113862825	a	g	0.0595	-0.0109	0.0078	1.63E-01	??-	1.00E+00
WBC count	rs6542118	2	113912081	a	g	0.4871	-0.0037	0.002	6.10E-02	--	1.84E-01
WBC count	rs6708535	2	113833839	t	c	0.1678	0.0046	0.0042	2.72E-01	?-+	1.55E-01
WBC count	rs6710007	2	113780930	a	g	0.505	9.00E-04	0.0019	6.31E-01	+--	5.94E-02
WBC count	rs6714534	2	113759330	t	c	0.3954	-0.0018	0.0023	4.32E-01	++	1.54E-01
WBC count	rs6721033	2	113908086	a	c	0.3987	0.0045	0.002	2.38E-02	+++	2.87E-01
WBC count	rs6722922	2	113841515	t	c	0.4936	0.0039	0.0022	6.88E-02	++	4.71E-04
WBC count	rs6723495	2	113922579	t	c	0.7273	0.001	0.0043	8.23E-01	??+	4.54E-01
WBC count	rs6724667	2	113789641	a	g	0.5307	-0.0011	0.0025	6.53E-01	-+-	4.42E-01
WBC count	rs6728590	2	113844600	a	g	0.5257	-0.0042	0.0018	2.19E-02	+--	7.79E-03
WBC count	rs6730516	2	113848961	t	c	0.4754	0.0071	0.0022	9.84E-04	++	9.52E-03
WBC count	rs6731551	2	113844553	t	c	0.6277	0.0013	0.0019	4.90E-01	++	1.74E-04
<b>WBC count</b>	<b>rs6734238</b>	<b>2</b>	<b>113841030</b>	<b>a</b>	<b>g</b>	<b>0.5182</b>	<b>-0.0117</b>	<b>0.0021</b>	<b>2.37E-08</b>	<b>---</b>	<b>2.09E-01</b>
WBC count	rs6738239	2	113850792	a	c	0.3446	0.0106	0.0021	3.63E-07	+++	2.39E-01
WBC count	rs6738377	2	113850902	c	g	0.5289	-0.004	0.0018	2.98E-02	+--	1.21E-02
WBC count	rs6739883	2	113914312	a	g	0.1336	0.0022	0.0032	4.89E-01	++	6.48E-01
WBC count	rs6741180	2	113844384	a	g	0.3445	0.0102	0.0021	8.42E-07	+++	2.48E-01
WBC count	rs6743171	2	113840058	c	g	0.3168	0.0079	0.0022	2.72E-04	+++	5.69E-02
WBC count	rs6743376	2	113832333	a	c	0.7371	0.0122	0.0026	1.75E-06	??+	5.76E-01
WBC count	rs6744288	2	113783230	a	t	0.5023	4.00E-04	0.0018	8.11E-01	+--	4.79E-02
WBC count	rs6744874	2	113783909	a	t	0.1543	-0.0032	0.0037	3.89E-01	-?-	6.47E-01
WBC count	rs6746979	2	113854120	a	t	0.335	0.0106	0.0021	5.59E-07	+++	2.39E-01
WBC count	rs6750559	2	113841532	a	g	0.3589	0.0104	0.0021	9.57E-07	+++	3.94E-01
WBC count	rs6754298	2	113896213	a	t	0.3063	0.0047	0.0021	2.80E-02	+++	7.59E-01
WBC count	rs6754538	2	113777393	c	g	0.3001	0.0066	0.0039	9.15E-02	??+	1.00E+00

Table S1. Random-effects meta-analysis of MANTRA identified loci.

WBC count	rs6755354	2	113826072	t	g	0.4443	0.002	0.0021	3.48E-01	+--	3.73E-01
WBC count	rs6756735	2	113806121	t	c	0.3324	-0.0082	0.0031	7.73E-03	-?-	3.66E-01
WBC count	rs6758965	2	113791193	t	c	0.638	3.00E-04	0.0024	9.02E-01	+?-	1.21E-02
WBC count	rs6759676	2	113836348	t	c	0.3562	0.0034	0.002	9.42E-02	++-	4.01E-02
WBC count	rs6760120	2	113932431	t	c	0.4236	-2.00E-04	0.0019	9.13E-01	--+	8.65E-01
WBC count	rs6761276	2	113832312	t	c	0.5895	-0.0027	0.002	1.74E-01	--+	2.56E-02
WBC count	rs724496	2	113922276	a	g	0.4256	2.00E-04	0.0027	9.28E-01	--+	5.29E-01
WBC count	rs7557928	2	113797968	t	g	0.445	5.00E-04	0.0023	8.44E-01	++	7.45E-01
WBC count	rs7558672	2	113825303	a	g	0.1901	-0.0085	0.0032	7.14E-03	-?-	4.79E-01
WBC count	rs7561080	2	113864920	a	g	0.6021	0.0054	0.0023	1.94E-02	+++	2.88E-01
WBC count	rs7569284	2	113803563	a	g	0.5537	0.0011	0.0023	6.47E-01	++	8.43E-01
WBC count	rs7570267	2	113828578	a	g	0.627	0.0029	0.002	1.52E-01	++	1.95E-01
WBC count	rs7571656	2	113758863	t	g	0.5891	-6.00E-04	0.002	7.40E-01	++	7.33E-02
WBC count	rs7573950	2	113859645	a	g	0.101	0.0234	0.009	8.96E-03	??+	1.00E+00
WBC count	rs7574159	2	113859761	a	g	0.3351	0.0101	0.0021	2.69E-06	+++	2.61E-01
WBC count	rs7574427	2	113860038	a	g	0.3084	0.0085	0.0022	1.22E-04	+++	1.31E-01
WBC count	rs7574787	2	113837416	t	g	0.624	0.009	0.0055	9.90E-02	-?+	3.14E-02
WBC count	rs7575934	2	113817334	t	c	0.4188	-0.0069	0.0027	1.21E-02	-?-	1.94E-01
WBC count	rs7583835	2	113754725	a	c	0.0463	-0.0078	0.0136	5.66E-01	??-	1.00E+00
WBC count	rs7584409	2	113742734	a	g	0.4811	-5.00E-04	0.0025	8.48E-01	?-+	8.32E-01
WBC count	rs7593760	2	113753731	a	g	0.9537	0.0077	0.0136	5.71E-01	??+	1.00E+00
WBC count	rs7595962	2	113934226	t	c	0.516	-9.00E-04	0.0021	6.56E-01	-+-	2.26E-01
WBC count	rs7599662	2	113825085	t	c	0.3882	-4.00E-04	0.0025	8.74E-01	-+-	9.44E-01
WBC count	rs7606584	2	113796484	t	c	0.186	-6.00E-04	0.007	9.32E-01	??-	1.00E+00
WBC count	rs768627	2	113821653	t	c	0.4295	-0.0014	0.0018	4.35E-01	--+	1.37E-03
WBC count	rs895495	2	113899758	a	g	0.464	-0.0038	0.002	6.06E-02	--+	2.16E-01
WBC count	rs895496	2	113899025	t	c	0.3891	0.0024	0.002	2.45E-01	++	6.32E-02
WBC count	rs895497	2	113763575	a	g	0.2718	0.004	0.0026	1.23E-01	?++	8.67E-02
WBC count	rs9005	2	113891412	a	g	0.2583	-0.0033	0.002	9.80E-02	---	8.09E-01
WBC count	rs921065	2	113825966	t	c	0.4131	-3.00E-04	0.0018	8.47E-01	--+	1.02E-02
WBC count	rs928940	2	113877495	t	g	0.3068	2.00E-04	0.002	9.23E-01	++	3.00E-01
WBC count	rs9308681	2	113781335	c	g	0.5484	6.00E-04	0.0024	8.13E-01	++	6.80E-01
WBC count	rs9308682	2	113828425	a	g	0.3779	0.0027	0.0022	2.11E-01	++	1.86E-01
WBC count	rs931471	2	113912693	t	c	0.3665	0.0051	0.0021	1.40E-02	+++	3.25E-01
WBC count	rs957200	2	113821336	a	c	0.182	0.0022	0.0026	3.85E-01	+++	4.66E-01
WBC count	rs957201	2	113821200	t	c	0.4283	-0.0014	0.0018	4.51E-01	--+	1.20E-03
WBC count	rs9678578	2	113810947	a	t	0.5205	-2.00E-04	0.0025	9.27E-01	-0-	9.82E-01
WBC count	rs973635	2	113889134	a	g	0.4377	-0.0026	0.002	1.93E-01	+--	3.69E-01

Table S1. Random-effects meta-analysis of MANTRA identified loci.

WBC count	rs990524	2	113816481	t	c	0.363	2.00E-04	0.0025	9.41E-01	-0+	9.73E-01
WBC count	rs996879	2	113822241	a	g	0.2204	0.0031	0.0032	3.41E-01	+++	2.44E-01
WBC count	rs9973741	2	113853381	a	g	0.7481	-0.0131	0.0034	1.45E-04	-?-	2.20E-01
WBC count	rs9973878	2	113752761	a	g	0.1357	0.0052	0.0052	3.22E-01	??+	1.00E+00
WBC count	rs10169718	2	219103580	a	g	0.5134	-0.0098	0.0018	7.67E-08	--+	7.59E-02
WBC count	rs10182823	2	219107367	a	g	0.8973	-4.00E-04	0.0083	9.62E-01	??-	1.00E+00
WBC count	rs1018288	2	219099260	c	g	0.7837	5.00E-04	0.0065	9.39E-01	??+	1.00E+00
<b>WBC count</b>	<b>rs10932765</b>	<b>2</b>	<b>219099484</b>	<b>t</b>	<b>c</b>	<b>0.4251</b>	<b>-0.0106</b>	<b>0.0019</b>	<b>9.42E-09</b>	<b>---</b>	<b>4.55E-01</b>
WBC count	rs11901011	2	219106136	a	g	0.0217	0.0149	0.0199	4.53E-01	??+	1.00E+00
WBC count	rs16858888	2	219090451	t	c	0.0885	-0.0128	0.0094	1.72E-01	??-	1.00E+00
WBC count	rs17572109	2	219093934	a	g	0.2382	-0.0068	0.0032	3.37E-02	?--	2.69E-01
WBC count	rs4674275	2	219097738	a	g	0.4084	-0.0087	0.0018	9.10E-07	--+	2.96E-02
WBC count	rs6436046	2	219098248	t	g	0.2184	-0.0236	0.0227	2.99E-01	??-	1.00E+00
WBC count	rs6436047	2	219108913	a	c	0.4046	-0.0091	0.0018	6.59E-07	--+	2.62E-02
WBC count	rs6436048	2	219109033	a	g	0.5661	0.0087	0.0018	8.77E-07	+++	3.15E-02
WBC count	rs6704974	2	219109391	a	g	0.1313	-0.0024	0.0076	7.53E-01	??-	1.00E+00
WBC count	rs6742439	2	219098672	a	g	0.2163	-5.00E-04	0.0065	9.39E-01	??-	1.00E+00
WBC count	rs6757318	2	219090422	a	g	0.784	8.00E-04	0.0065	9.02E-01	??+	1.00E+00
WBC count	rs7605980	2	219100869	c	g	0.5673	0.0087	0.0018	8.74E-07	+++	3.15E-02
WBC count	rs9288536	2	219089616	c	g	0.1232	-0.0011	0.0056	8.43E-01	??-	1.00E+00
WBC count	rs9288537	2	219096333	c	g	0.7003	-0.0024	0.004	5.50E-01	??-	1.00E+00
WBC count	rs9679606	2	219107700	a	g	0.6942	-0.0017	0.0059	7.72E-01	??-	1.00E+00
WBC count	rs9789363	2	219090365	t	c	0.6969	-0.0015	0.0039	7.01E-01	??-	1.00E+00
WBC count	rs10456057	6	31245534	a	g	0.4735	-0.0028	0.0031	3.66E-01	--+	5.71E-01
WBC count	rs12111032	6	31242191	a	g	0.4782	0.0054	0.0027	4.95E-02	??+	3.92E-01
WBC count	rs12191877	6	31252925	t	c	0.4245	0.0039	0.0031	2.07E-01	+++	5.68E-01
WBC count	rs12234123	6	31243604	a	g	0.2245	-0.0045	0.0028	1.10E-01	+++	2.07E-02
WBC count	rs12529015	6	31248262	a	g	0.1416	-0.0058	0.0031	6.47E-02	+++	7.21E-02
WBC count	rs13191343	6	31241109	t	c	0.3155	0.0054	0.0026	3.90E-02	+++	6.08E-01
WBC count	rs13200569	6	31243615	a	g	0.3146	-0.0033	0.0019	7.63E-02	-+-	2.09E-01
WBC count	rs13203895	6	31244082	t	c	0.4222	0.004	0.0031	1.94E-01	+++	9.02E-01
WBC count	rs13207315	6	31241127	t	c	0.4271	-0.0034	0.0026	1.97E-01	--+	3.25E-01
WBC count	rs13208617	6	31248819	t	c	0.4217	0.003	0.0031	3.26E-01	+++	6.05E-01
WBC count	rs16899147	6	31255201	a	g	0.6685	0.0027	0.0026	3.07E-01	+++	6.92E-02
WBC count	rs16899160	6	31256667	a	g	0.0655	-0.0125	0.0046	6.92E-03	?--	7.63E-01
WBC count	rs2040748	6	31243785	t	g	0.3754	0.0042	0.002	3.91E-02	+++	2.82E-04
WBC count	rs2074488	6	31240431	t	g	0.3562	-0.0055	0.0024	2.01E-02	--+	1.52E-02
WBC count	rs2074489	6	31240128	t	c	0.4071	-0.0023	0.0019	2.40E-01	-+-	2.03E-02

Table S1. Random-effects meta-analysis of MANTRA identified loci.

WBC count	rs2074491	6	31239896	t	c	0.8493	0.003	0.0098	7.64E-01	+++	9.12E-01
WBC count	rs2249741	6	31240712	a	c	0.3549	-0.0105	0.0041	1.08E-02	??-	1.00E+00
WBC count	rs2249742	6	31240721	t	c	0.5109	0.0051	0.0017	3.17E-03	++-	2.37E-08
WBC count	rs2394963	6	31251462	t	c	0.4608	-0.0018	0.0018	3.31E-01	-+-	4.27E-02
WBC count	rs2395471	6	31240692	a	g	0.4747	0.0033	0.0017	4.92E-02	++	8.88E-02
WBC count	rs2524042	6	31257160	c	g	0.5922	-0.012	0.0024	4.98E-07	---	4.31E-01
WBC count	rs2524043	6	31257012	a	g	0.5902	-0.0175	0.0028	8.24E-10	---	1.51E-01
WBC count	rs2524044	6	31256753	t	g	0.4573	-0.0083	0.0024	4.50E-04	---	6.39E-03
WBC count	rs2524047	6	31256591	a	g	0.5906	-0.0174	0.0028	8.57E-10	---	1.47E-01
WBC count	rs2524048	6	31256561	t	c	0.3832	-0.0154	0.0028	5.89E-08	---	2.40E-03
WBC count	rs2524049	6	31255953	c	g	0.5814	-0.0137	0.0025	2.18E-08	---	3.20E-01
WBC count	rs2524050	6	31255541	t	c	0.4065	-0.0132	0.003	8.99E-06	---	6.70E-03
WBC count	rs2524051	6	31255500	a	g	0.5907	-0.0175	0.0028	8.41E-10	---	1.47E-01
WBC count	rs2524052	6	31253996	a	g	0.3813	-0.0055	0.0019	4.33E-03	+-	7.24E-03
WBC count	rs2524053	6	31252469	t	g	0.4984	-0.0025	0.0019	2.02E-01	+-	3.34E-04
WBC count	rs2524054	6	31252396	a	c	0.2011	-0.0077	0.0022	4.03E-04	+-	5.57E-05
WBC count	rs2524055	6	31252237	a	c	0.5899	-0.0172	0.0029	1.70E-09	---	9.47E-02
WBC count	rs2524057	6	31251895	a	g	0.5922	-0.012	0.0024	5.58E-07	---	4.33E-01
WBC count	rs2524059	6	31250823	c	g	0.2066	-0.0024	0.0028	3.99E-01	+-	7.55E-02
WBC count	rs2524063	6	31248155	a	g	0.1072	0.0173	0.0028	4.05E-10	+++	2.11E-01
WBC count	rs2524067	6	31245821	a	g	0.4562	0.0121	0.0031	7.70E-05	+++	6.02E-01
WBC count	rs2524068	6	31245061	t	g	0.3804	0.0083	0.0026	1.38E-03	0	1.41E-02
WBC count	rs2524069	6	31244789	a	t	0.4054	0.0135	0.0033	3.59E-05	+++	8.67E-01
WBC count	rs2524070	6	31244520	a	g	0.1551	0.0101	0.0024	3.69E-05	++	8.59E-03
WBC count	rs2524074	6	31244021	a	g	0.5899	0.0088	0.0021	2.82E-05	+++	2.32E-03
WBC count	rs2524077	6	31243603	t	c	0.3468	0.0133	0.0028	1.42E-06	++	6.74E-05
WBC count	rs2524078	6	31242649	a	g	0.45	0.0112	0.003	2.20E-04	+++	9.03E-01
WBC count	rs2524079	6	31242174	a	g	0.4084	0.0121	0.0019	1.97E-10	+++	2.92E-01
WBC count	rs2524082	6	31241761	a	t	0.4934	0.0074	0.0017	1.63E-05	+++	1.24E-01
WBC count	rs2524083	6	31241737	t	c	0.3452	0.0133	0.0028	2.66E-06	++	6.70E-05
WBC count	rs2524084	6	31241639	a	g	0.478	0.0107	0.0018	2.53E-09	+++	3.43E-01
WBC count	rs2524094	6	31240041	t	c	0.5217	0.0033	0.0019	7.91E-02	++	1.63E-02
WBC count	rs2844599	6	31256005	c	g	0.102	0.017	0.0028	1.85E-09	+++	8.32E-02
WBC count	rs2844600	6	31253771	t	g	0.3158	0.015	0.0028	1.21E-07	++	1.15E-03
WBC count	rs2844603	6	31250854	a	g	0.2085	-0.0026	0.0028	3.51E-01	+-	6.60E-02
WBC count	rs2844605	6	31248591	a	c	0.4656	-0.0083	0.0017	1.13E-06	---	1.80E-01
WBC count	rs2844611	6	31243979	a	t	0.5905	0.0088	0.0021	3.07E-05	++	2.08E-03
WBC count	rs2844612	6	31243971	a	g	0.2291	-0.0086	0.0021	4.46E-05	+-	2.29E-03



Table S1. Random-effects meta-analysis of MANTRA identified loci.

WBC count	rs2844613	6	31243846	t	g	0.4509	-0.0067	0.0031	2.92E-02	?-+	2.01E-03
WBC count	rs2844615	6	31242959	t	c	0.3368	0.0135	0.0028	8.59E-07	++-	1.76E-04
WBC count	rs2844618	6	31242439	t	c	0.3377	0.0137	0.0028	6.38E-07	++-	2.22E-04
WBC count	rs2844619	6	31242223	c	g	0.31	-0.0097	0.002	1.89E-06	+--	1.55E-04
WBC count	rs2844621	6	31241537	t	c	0.4445	-0.0051	0.002	9.73E-03	--+	1.95E-02
WBC count	rs2844622	6	31240060	a	g	0.2562	-0.0071	0.0021	5.14E-04	+--	3.43E-03
WBC count	rs28481932	6	31242900	a	g	0.625	7.00E-04	0.0023	7.53E-01	+?-	9.09E-03
WBC count	rs2853929	6	31255434	t	c	0.3101	0.0155	0.0029	5.99E-08	++-	2.39E-03
WBC count	rs2853930	6	31255424	a	c	0.6214	-0.0153	0.003	2.35E-07	---	2.23E-01
WBC count	rs2853933	6	31254088	t	c	0.4906	-0.0012	0.0021	5.74E-01	+++	2.94E-03
WBC count	rs2853934	6	31253928	a	t	0.5945	-0.0173	0.0028	8.77E-10	---	1.46E-01
WBC count	rs2853935	6	31253878	t	c	0.576	-0.0059	0.0027	2.95E-02	-?-	5.02E-01
WBC count	rs2853937	6	31252569	t	c	0.3787	-0.0156	0.0028	3.36E-08	--+	4.92E-03
WBC count	rs2853939	6	31250642	t	c	0.4989	-0.003	0.0019	1.22E-01	+++	1.16E-03
WBC count	rs2853943	6	31247871	t	c	0.4963	0.0021	0.0024	3.84E-01	-?+	1.49E-01
<b>WBC count</b>	<b>rs2853946</b>	<b>6</b>	<b>31247203</b>	<b>a</b>	<b>t</b>	<b>0.5198</b>	<b>-0.0139</b>	<b>0.0018</b>	<b>2.67E-14</b>	<b>---</b>	<b>4.37E-01</b>
WBC count	rs2853948	6	31245573	c	g	0.1071	0.0176	0.0027	1.66E-10	+++	3.29E-01
WBC count	rs3130693	6	31242859	t	c	0.5511	-0.0021	0.0026	4.30E-01	-?-	8.13E-01
WBC count	rs3130696	6	31243884	a	g	0.2691	-0.0074	0.002	1.85E-04	---	6.18E-01
WBC count	rs3132485	6	31243389	a	c	0.4261	-9.00E-04	0.0017	5.94E-01	-0-	6.06E-01
WBC count	rs3132486	6	31243170	a	g	0.5518	-0.003	0.0018	9.26E-02	-+-	1.16E-01
WBC count	rs3132488	6	31242695	t	g	0.6175	-0.004	0.0033	2.27E-01	-?-	7.01E-01
WBC count	rs3132489	6	31242674	t	c	0.5637	-5.00E-04	0.0019	7.90E-01	+++	3.97E-01
WBC count	rs3132490	6	31242560	a	g	0.6104	0.0037	0.0025	1.37E-01	+++	2.37E-02
WBC count	rs3132491	6	31242272	t	c	0.4201	0.0048	0.0025	5.85E-02	+++	3.05E-02
WBC count	rs3134745	6	31242762	t	c	0.4455	0.0088	0.0033	8.54E-03	+?-	2.61E-03
WBC count	rs3873374	6	31251311	t	c	0.4898	0.0045	0.0022	4.30E-02	??+	3.28E-01
WBC count	rs3873375	6	31251360	t	c	0.4643	-0.0019	0.0018	2.85E-01	-+-	1.04E-01
WBC count	rs3930575	6	31244654	a	g	0.1303	-0.0047	0.0026	7.03E-02	+--	4.57E-02
WBC count	rs3931670	6	31243767	c	g	0.2886	0.0061	0.0019	1.69E-03	+++	6.06E-01
WBC count	rs4361609	6	31240635	c	g	0.1906	0.0044	0.0022	4.89E-02	+++	9.48E-05
WBC count	rs4386816	6	31247135	t	c	0.4409	-0.0042	0.0024	7.41E-02	---	2.68E-05
WBC count	rs4628144	6	31257104	t	c	0.4329	0.0017	0.0018	3.27E-01	+++	8.48E-02
WBC count	rs5009853	6	31240636	t	c	0.2671	-0.0031	0.0048	5.22E-01	-+-	8.67E-01
WBC count	rs5010528	6	31241032	a	g	0.5863	-0.0113	0.0028	6.92E-05	---	7.80E-01
WBC count	rs6457358	6	31239999	a	t	0.5449	0.0081	0.0039	3.82E-02	+++	8.45E-01
WBC count	rs6457372	6	31247121	a	g	0.4975	-0.0044	0.0017	1.11E-02	---	9.63E-01
WBC count	rs6906846	6	31245736	a	g	0.3114	0.0022	0.0018	2.30E-01	+++	4.04E-02

Table S1. Random-effects meta-analysis of MANTRA identified loci.

WBC count	rs6913377	6	31243495	a	g	0.0711	-7.00E-04	0.0045	8.78E-01	?-+	7.11E-01
WBC count	rs6919409	6	31244532	a	g	0.0677	-0.0109	0.0045	1.61E-02	?--	9.82E-01
WBC count	rs6919908	6	31244960	t	c	0.4206	0.0033	0.0024	1.75E-01	+?-	3.06E-02
WBC count	rs6923313	6	31241370	t	c	0.5801	-0.0067	0.0024	5.60E-03	-?-	6.36E-01
WBC count	rs7381988	6	31246703	a	g	0.5936	0.0044	0.0025	7.92E-02	--+	9.90E-03
WBC count	rs7382297	6	31247067	t	g	0.3092	-0.001	0.0027	7.19E-01	++	1.23E-01
WBC count	rs7382307	6	31247149	a	g	0.1298	-0.0043	0.0026	9.09E-02	+--	4.59E-02
WBC count	rs7754443	6	31254263	a	g	0.4021	0.0018	0.0018	3.22E-01	+++	7.98E-02
WBC count	rs7755686	6	31247796	c	g	0.114	-1.00E-04	0.0036	9.86E-01	--+	3.68E-01
WBC count	rs7759127	6	31240988	t	g	0.4004	-0.011	0.0029	1.37E-04	---+	5.01E-04
WBC count	rs7767581	6	31239855	c	g	0.248	-0.0074	0.0021	3.73E-04	+--	1.98E-04
WBC count	rs7773175	6	31240959	c	g	0.585	-0.0119	0.002	1.96E-09	---	1.75E-01
WBC count	rs9264602	6	31237405	t	c	0.5731	-0.0066	0.003	2.90E-02	-?-	6.07E-01
WBC count	rs9264603	6	31237437	t	c	0.4216	0.0051	0.0028	7.38E-02	+?+	5.29E-01
WBC count	rs9264604	6	31237449	t	c	0.4344	0.0049	0.003	1.06E-01	+?+	6.36E-01
WBC count	rs9264606	6	31237592	a	c	0.2397	-0.0075	0.0021	3.40E-04	+--	1.51E-04
WBC count	rs9264608	6	31237660	a	g	0.2553	-0.0082	0.0021	6.72E-05	+--	7.19E-04
WBC count	rs9264636	6	31238297	t	c	0.4458	0.0046	0.002	2.48E-02	-+-	1.50E-06
WBC count	rs9264647	6	31238613	a	g	0.2419	-0.0082	0.0021	8.33E-05	+--	2.05E-04
WBC count	rs9264664	6	31239227	t	c	0.4264	0.0045	0.0021	3.54E-02	-+-	5.31E-07
WBC count	rs9264672	6	31239766	t	c	0.3186	0.0143	0.0028	3.45E-07	+++	3.74E-04
WBC count	rs9264679	6	31240663	a	t	0.5891	0.0044	0.0026	8.65E-02	+++	3.80E-02
WBC count	rs9264681	6	31240871	c	g	0.305	0.0025	0.0019	1.83E-01	-+-	1.36E-01
WBC count	rs9264731	6	31244068	a	g	0.5917	0.0046	0.0026	7.19E-02	+++	4.50E-02
WBC count	rs9264733	6	31244214	c	g	0.2797	0.0083	0.0025	7.66E-04	+?+	5.97E-01
WBC count	rs9264742	6	31244616	t	c	0.4047	-0.0087	0.0037	2.06E-02	?-+	3.16E-02
WBC count	rs9264745	6	31245478	a	g	0.6158	0.0037	0.0024	1.24E-01	+++	2.92E-02
WBC count	rs9264759	6	31248678	t	c	0.4067	-0.0029	0.002	1.51E-01	+--	5.88E-02
WBC count	rs9348860	6	31252667	t	c	0.4748	0.0041	0.0026	1.21E-01	+++	4.08E-02
WBC count	rs9348861	6	31252722	a	g	0.6626	0.0044	0.0026	9.17E-02	+++	4.41E-02
WBC count	rs9348862	6	31252747	t	c	0.0626	-0.0045	0.0048	3.43E-01	?--	6.17E-01
WBC count	rs9366776	6	31256630	a	g	0.1425	-0.0031	0.0026	2.27E-01	-+-	1.12E-02
WBC count	rs9368669	6	31248493	t	c	0.6627	0.0059	0.0032	6.68E-02	+--	6.82E-02
WBC count	rs9368670	6	31252882	t	c	0.3253	-0.0037	0.0026	1.53E-01	+++	3.38E-02
WBC count	rs9368671	6	31254704	t	c	0.3252	-0.0038	0.0026	1.46E-01	+++	3.49E-02
WBC count	rs9380232	6	31242741	t	c	0.0403	-0.0026	0.0055	6.36E-01	?-+	1.80E-01
WBC count	rs9380234	6	31248568	a	g	0.1492	-0.0062	0.0032	5.61E-02	-+-	6.14E-02
WBC count	rs9380236	6	31254664	a	g	0.6842	0.0031	0.0028	2.66E-01	+--	1.45E-02

Table S1. Random-effects meta-analysis of MANTRA identified loci.

WBC count	rs9391714	6	31245080	a	g	0.1481	-0.0059	0.0032	6.68E-02	-+-	6.70E-02
WBC count	rs9394049	6	31244028	a	c	0.0937	0.0019	0.0038	6.25E-01	?++	7.73E-01
WBC count	rs9461680	6	31243347	t	c	0.4008	-0.0035	0.002	8.64E-02	--+	6.93E-02
WBC count	rs9461681	6	31251040	a	g	0.4077	0.0015	0.0017	3.99E-01	--+	1.66E-01
WBC count	rs9461684	6	31253444	t	c	0.4404	0.001	0.003	7.44E-01	+++	2.24E-05
WBC count	rs9468915	6	31250801	a	c	0.5258	-0.006	0.0019	1.85E-03	---	9.64E-02
WBC count	rs9468919	6	31253866	a	g	0.1486	0.013	0.0031	3.20E-05	+++	5.96E-01
WBC count	rs9468920	6	31254936	a	g	0.4072	0.0017	0.0018	3.36E-01	+++	3.89E-02
WBC count	rs9468922	6	31255286	a	g	0.4359	-4.00E-04	0.0017	8.32E-01	+++	4.53E-01
WBC count	rs10094039	8	130589676	a	g	0.4504	0.0056	0.0017	1.31E-03	+++	7.97E-03
WBC count	rs10103048	8	130602281	a	c	0.4571	0.008	0.0023	4.30E-04	??+	1.65E-02
WBC count	rs10107630	8	130603635	t	c	0.4953	-0.006	0.0017	5.04E-04	--+	2.30E-02
WBC count	rs10458304	8	130596459	t	c	0.3851	-4.00E-04	0.0043	9.32E-01	-?+	7.73E-01
WBC count	rs10956484	8	130588520	a	g	0.1551	-0.0179	0.0032	2.44E-08	-?-	2.49E-02
WBC count	rs11785889	8	130603247	t	c	0.4256	0.0073	0.0021	3.92E-04	+++	1.79E-02
WBC count	rs11995855	8	130601919	t	c	0.971	0.0093	0.0199	6.40E-01	??+	1.00E+00
WBC count	rs13277237	8	130604563	a	g	0.497	-0.0063	0.0017	2.47E-04	---	3.54E-02
WBC count	rs1368700	8	130600091	a	g	0.3388	0.0043	0.0018	1.80E-02	+++	1.84E-03
WBC count	rs1433577	8	130595881	a	g	0.3429	0.0064	0.0019	5.67E-04	0	1.85E-02
WBC count	rs1433578	8	130601089	t	c	0.5297	0.0148	0.0028	9.77E-08	+++	3.50E-03
WBC count	rs1433580	8	130603707	t	c	0.4096	-0.0067	0.0018	2.33E-04	---	3.49E-02
WBC count	rs16904119	8	130593742	t	g	0.3902	-0.0061	0.0019	1.24E-03	---	1.19E-02
WBC count	rs16904121	8	130600781	t	c	0.4246	0.0068	0.002	9.39E-04	+++	4.76E-02
WBC count	rs17265074	8	130603007	t	g	0.0811	-6.00E-04	0.004	8.88E-01	?+-	1.72E-01
WBC count	rs1821340	8	130605291	c	g	0.1665	0.0049	0.0041	2.34E-01	-?+	4.21E-01
WBC count	rs1865223	8	130606476	t	g	0.5206	-0.0044	0.0018	1.44E-02	--+	1.01E-03
WBC count	rs2043405	8	130596548	a	g	0.1455	0.0031	0.0043	4.70E-01	??+	9.75E-01
<b>WBC count</b>	<b>rs2163950</b>	<b>8</b>	<b>130597585</b>	<b>a</b>	<b>c</b>	<b>0.1404</b>	<b>-0.0167</b>	<b>0.0028</b>	<b>1.90E-09</b>	<b>---</b>	<b>8.93E-02</b>
WBC count	rs2163951	8	130603357	t	c	0.5054	-0.0034	0.0031	2.81E-01	---	8.37E-01
WBC count	rs6470743	8	130606310	a	g	0.327	0.0057	0.0019	2.61E-03	+++	2.09E-02
WBC count	rs6982402	8	130589924	t	c	0.6347	-0.001	0.0042	8.11E-01	??-	7.68E-01
WBC count	rs6982553	8	130589974	a	t	0.3543	0.0047	0.0018	9.56E-03	+++	9.89E-04
WBC count	rs6986451	8	130589711	a	g	0.1445	0.0037	0.0042	3.77E-01	??+	7.47E-01
WBC count	rs7000289	8	130597230	a	g	0.5107	-0.0054	0.0018	2.90E-03	--+	4.87E-03
WBC count	rs7000320	8	130589906	t	c	0.4408	0.0067	0.0018	2.68E-04	+++	2.64E-02
WBC count	rs7000372	8	130590017	a	g	0.5079	-0.0053	0.0019	4.35E-03	--+	2.45E-03
WBC count	rs7000917	8	130590087	a	g	0.9601	0.0015	0.006	7.99E-01	-?+	6.35E-01
WBC count	rs7004211	8	130594056	t	c	0.631	-7.00E-04	0.0043	8.72E-01	?+-	7.37E-01



Table S3. Credible Interval Statistics

Trait	SNP	Chr	Position (b37)	Effect Allele	Other Allele	Study Number	log10(BF)	PPH	Sample Size	Effect Direction	Genes	set95*
Neutrophils	rs7667376	4	74967890	C	T	3	11.12528	1	33743	++	NA	0.52118827
Neutrophils	rs1371798	4	74976781	C	T	3	9.94375	1	33753	++	NA	0.997634695
Neutrophils	rs1371799	4	74977837	C	T	3	10.9749	1	33753	+-	NA	0.889838606
Neutrophils	rs1866755	4	74978340	C	T	3	10.27447	1	33705	++	NA	0.963321226
Neutrophils	rs2072633	6	31919578	A	G	3	3.44008	0.509	33698	---	Several, HLA	0.977220747
Neutrophils	rs592229	6	31930441	G	T	3	5.91581	1	33737	+-	Several, HLA	0.941088647
Neutrophils	rs204989	6	32161852	A	G	3	3.12774	0.041	33716	---	Several, HLA	0.986900655
Neutrophils	rs405875	6	32215188	C	T	3	3.44774	0.026	33743	+++	Several, HLA	0.976511099
Neutrophils	rs410283	6	32215198	G	T	3	3.65833	0.019	33753	---	Several, HLA	0.974006156
Neutrophils	rs2515892	6	32215252	G	T	3	3.58835	0.025	33753	---	Several, HLA	0.975004576
Neutrophils	rs3130309	6	32215472	A	G	3	3.22801	0.529	33753	+-	Several, HLA	0.984631838
Neutrophils	rs2395111	6	32215964	C	T	3	3.26049	0.02	32931	+++	Several, HLA	0.983314935
Neutrophils	rs3115575	6	32216891	G	T	3	3.73571	0.025	33753	+++	Several, HLA	0.971611839
Neutrophils	rs6457508	6	32216963	C	T	3	3.76889	0.013	33753	---	Several, HLA	0.970210081
Neutrophils	rs6457510	6	32217046	C	T	3	3.22972	0.024	33753	---	Several, HLA	0.984196353
Neutrophils	rs6936204	6	32217092	C	T	3	6.45169	0.048	33706	+++	Several, HLA	0.728875097
Neutrophils	rs9267971	6	32217185	C	T	3	3.79636	0.022	33597	+++	Several, HLA	0.968697032
Neutrophils	rs9267972	6	32217232	A	G	2	4.72678	0.016	26352	?--	Several, HLA	0.954820942
Neutrophils	rs3115572	6	32220484	C	G	3	3.32271	0.487	33680	+-	Several, HLA	0.981399393
Neutrophils	rs3115571	6	32220918	A	G	3	3.08206	0.616	33753	+-	Several, HLA	0.988222552
Neutrophils	rs3130316	6	32221228	C	T	3	4.61145	0.027	33737	+++	Several, HLA	0.965350572
Neutrophils	rs3132931	6	32235895	G	T	3	2.97088	0.019	33744	---	Several, HLA	0.989328272
Neutrophils	rs3096673	6	32238013	C	T	3	3.02775	0.021	33744	---	Several, HLA	0.989087816
Neutrophils	rs1559873	6	32243129	C	T	3	2.96203	0.019	33717	---	Several, HLA	0.989564764
Neutrophils	rs9268142	6	32256418	C	T	3	3.1193	0.02	33753	---	Several, HLA	0.987582941
Neutrophils	rs3749966	6	32261507	C	T	3	2.94944	0.023	33744	---	Several, HLA	0.989794063
Neutrophils	rs9268163	6	32270875	C	T	3	3.67587	0.02	33753	+++	Several, HLA	0.972833169
Neutrophils	rs3864301	6	32271955	C	T	3	3.26717	0.014	33753	+++	Several, HLA	0.982845633
Neutrophils	rs9268176	6	32274079	C	T	3	3.39956	0.023	33753	+++	Several, HLA	0.978515431
Neutrophils	rs7341300	6	32275027	C	T	3	3.37453	0.013	33753	+++	Several, HLA	0.979747993
Neutrophils	rs9268181	6	32276009	C	T	3	3.38306	0.013	33697	---	Several, HLA	0.979137764
Neutrophils	rs9268182	6	32276027	G	T	3	3.0606	0.022	33753	---	Several, HLA	0.988518737
Neutrophils	rs9268204	6	32279500	C	T	3	3.33732	0.018	33753	+++	Several, HLA	0.980308116
Neutrophils	rs6934429	6	32279622	G	T	3	3.40078	0.017	33743	+++	Several, HLA	0.977868998
Neutrophils	rs9268207	6	32280462	C	T	3	3.05808	0.02	33702	+++	Several, HLA	0.988813208
Neutrophils	rs1018434	6	32281360	C	T	3	3.26851	0.025	33738	---	Several, HLA	0.982369056
Neutrophils	rs3129959	6	32375796	A	T	2	3.82824	0.017	26352	?++	Several, HLA	0.967085187
Neutrophils	rs9268503	6	32377061	C	T	2	3.17613	0.025	26352	?--	Several, HLA	0.985430664
Neutrophils	rs6932810	6	32380190	A	G	2	2.94422	0.029	26352	?++	Several, HLA	0.990020623
Neutrophils	rs6918317	6	32381210	C	T	2	3.32915	0.016	26352	?++	Several, HLA	0.9808578
Neutrophils	rs2239806	6	32411307	C	T	3	3.1711	0.055	33744	++	Several, HLA	0.985812664
Neutrophils	rs1051336	6	32412592	A	G	3	3.20433	0.036	33713	---	Several, HLA	0.985044214
Neutrophils	rs1041885	6	32412809	A	T	3	3.23663	0.034	33744	+-	Several, HLA	0.98375915

Table S3. Credible Interval Statistics

Neutrophils	rs9286790	6	32439828	A	G	3	3.15656	0.027	33753	+++	Several, HLA	0.986554952
Neutrophils	rs602875	6	32573629	A	G	2	3.10547	1	26352	?-+	Several, HLA	0.987911363
Neutrophils	rs2395225	6	32590624	C	T	2	3.12463	0.018	26352	?--	Several, HLA	0.987243891
Neutrophils	rs4713581	6	32660023	C	T	2	3.28066	0.059	26352	?++	Several, HLA	0.981891006
Neutrophils	rs2858310	6	32668323	A	G	3	3.16059	0.02	33753	+++	Several, HLA	0.98618553
Neutrophils	rs9469246	6	32692227	G	T	3	3.48349	0.109	33701	-++	Several, HLA	0.975788823
Neutrophils	rs445	7	92408370	C	T	3	10.52497	1	33744	-++	CDK6	0.999977503
Neutrophils	rs4794822	17	38156712	C	T	3	28.91982	1	33753	+--	NA	0.874563179
Neutrophils	rs8078723	17	38166879	C	T	3	28.06213	1	33693	-++	NA	0.995930339

Table S3. Credible Interval Statistics

Trait	SNP	Chr	Position (b37)	Effect Allele	Other Allele	Study Number	log10 (BF)	PPH	Sample Size	Effect Direction	Genes	set95*
Monocytes	rs1449263	2	182319301	C	T	3	19.23857	1	33729	+--	ITGA4	0.513404537
Monocytes	rs2124440	2	182328214	A	G	3	19.1084	1	33681	+++	ITGA4	0.893847628
Monocytes	rs1375493	2	182323766	A	G	3	18.55404	1	33745	+++	ITGA4	1
Monocytes	rs9880192	3	128297569	C	G	3	8.30125	1	33745	+--	NA	0.958237747
Monocytes	rs9839508	3	128310794	A	T	3	6.92642	1	33704	-++	NA	0.998662118
Monocytes	rs9849126	3	128312069	C	T	3	5.30501	0.982	33708	+++	NA	0.999628688
Monocytes	rs2047076	5	76058509	C	T	3	6.03105	1	33729	+++	NA	0.998865282
Monocytes	rs1264376	6	30765579	A	C	3	3.99291	1	28260	+--	Several, HLA	0.987763272
Monocytes	rs1264344	6	30800577	C	T	3	4.0451	1	33693	+--	Several, HLA	0.985309756
Monocytes	rs2535326	6	30832063	C	T	3	4.12249	1	33728	+--	Several, HLA	0.983486311
Monocytes	rs2844654	6	30838688	G	T	3	4.02148	1	33729	+--	Several, HLA	0.986991592
Monocytes	rs1264333	6	30844314	C	T	3	4.08467	1	33729	+--	Several, HLA	0.98443954
Monocytes	rs2240804	6	30920890	A	G	3	4.46125	1	33729	--+	Several, HLA	0.97929274
Monocytes	rs3131012	6	31115441	C	T	3	5.00397	1	33729	+--	Several, HLA	0.945313282
Monocytes	rs2073717	6	31122126	C	G	3	4.65235	0.288	33671	---	Several, HLA	0.973796085
Monocytes	rs3130456	6	31126252	A	C	3	4.29037	0.405	33729	---	Several, HLA	0.982446349
Monocytes	rs3095239	6	31126790	A	G	3	4.74009	0.475	33621	+++	Several, HLA	0.966295715
Monocytes	rs1419880	6	31135197	C	T	3	6.51791	1	33745	+--	Several, HLA	0.767942886
Monocytes	rs6904669	6	31192796	A	G	3	3.87778	1	33728	++-	Several, HLA	0.9896044
Monocytes	rs3130712	6	31209510	C	T	3	3.90702	1	33674	-++	Several, HLA	0.988396482
Monocytes	rs28570051	6	31210601	C	T	2	4.7051	1	15304	+?+	Several, HLA	0.970273372
Monocytes	rs3095254	6	31221668	C	G	3	6.81258	1	33745	+++	Several, HLA	0.509456724
Monocytes	rs3130441	6	31228565	A	G	3	4.31576	0.889	33745	+++	Several, HLA	0.980915624
Monocytes	rs2844623	6	31232543	C	T	3	6.21948	1	33720	+--	Several, HLA	0.897962028
Monocytes	rs1049281	6	31236567	C	T	2	4.6144	1	26360	?-+	Several, HLA	0.977024039
Monocytes	rs9264636	6	31238297	C	T	3	5.11292	1	33745	-+-	Several, HLA	0.928636566
Monocytes	rs9264664	6	31239227	C	T	3	5.04802	1	33745	+--	Several, HLA	0.937397437
Monocytes	rs2524084	6	31241639	A	G	3	3.84627	0.969	33729	+++	Several, HLA	0.990154951
Monocytes	rs9264699	6	31241933	A	C	2	3.89501	0.106	26360	?-+	Several, HLA	0.98901242
Monocytes	rs6919908	6	31244960	C	T	2	4.82581	1	16373	+?+	Several, HLA	0.961984325
Monocytes	rs2524064	6	31247817	A	G	2	4.88433	0.269	26360	?-+	Several, HLA	0.951323045
Monocytes	rs2524053	6	31252469	G	T	3	4.0388	1	33745	--+	Several, HLA	0.98616744
Monocytes	rs2853928	6	31257511	A	C	3	4.8386	1	33745	++-	Several, HLA	0.956732173
Monocytes	rs6457374	6	31272261	C	T	3	5.41726	1	33727	-+-	Several, HLA	0.918463607
Monocytes	rs10107630	8	130603635	C	T	3	14.3687	1	33745	-++	CCDC26	0.994867393
Monocytes	rs13277237	8	130604563	A	G	3	15.9041	1	33728	---	CCDC26	0.793234363
Monocytes	rs4480083	8	130609320	C	T	3	13.95825	1	33745	-++	CCDC26	0.999230753
Monocytes	rs4407843	8	130609368	A	C	2	15.28985	0.012	26360	?-+	CCDC26	0.983640202
Monocytes	rs2163952	8	130610389	C	T	3	15.92914	1	33697	-++	CCDC26	0.40804784
Monocytes	rs1991866	8	130624105	C	G	3	15.30419	1	33598	---	CCDC26	0.890008896

Table S3. Credible Interval Statistics

Monocytes	rs10980800	9	113915905	C	T	3	11.63069	1	33692	-++	RP11-202G18.1	0.943693203
Monocytes	rs12346772	9	113920599	A	G	3	11.92453	0.999	33745	---	RP11-202G18.1	0.862140888
Monocytes	rs12350763	9	113923723	A	G	3	12.55646	1	33745	---	RP11-202G18.1	0.262246809
Monocytes	rs7034139	9	113924517	A	C	3	12.44428	1	33745	+++	RP11-202G18.1	0.46479586
Monocytes	rs1330279	9	113926908	A	G	3	11.84052	1	33745	+++	RP11-202G18.1	0.912580323
Monocytes	rs12337595	9	113927801	A	G	3	12.27785	1	33745	---	RP11-202G18.1	0.800936831
Monocytes	rs10124626	9	113940107	A	C	3	11.40469	1	33745	---	RP11-202G18.1	0.992935828
Monocytes	rs10123393	9	113941670	C	T	3	12.43457	1	33745	-++	RP11-202G18.1	0.662866549
Monocytes	rs17812386	9	113942888	A	G	3	11.62563	1	33745	+++	RP11-202G18.1	0.974445688



Table S3. Credible Interval Statistics

Trait	SNP	Chr	Position (b37)	Effect Allele	Other Allele	Study Number	log10 (BF)	PPH	Sample Size	Effect Direction	Genes	set95*	
WBC	rs2518564	1	159062436	A	G	3	341.58519	1	51768	+++	DARC	Inf	
WBC	rs6734238	2	113841030	A	G	3	6.61886	0.028	52691	---	IL1RN	0.680435948	A
WBC	rs12328368	2	113847144	C	G	3	5.82474	0.021	52702	---	IL1RN	0.789747799	A
WBC	rs12329129	2	113847007	A	G	3	5.56842	0.037	52740	+++	IL1RN	0.850330308	A
WBC	rs6738239	2	113850792	A	C	3	5.34698	0.022	52700	+++	IL1RN	0.88671404	A
WBC	rs1446509	2	113851159	A	T	3	5.26256	0.028	52740	---	IL1RN	0.916670276	A
WBC	rs6741180	2	113844384	A	G	3	5.02042	0.035	52740	+++	IL1RN	0.933823559	A
WBC	rs6746979	2	113854120	A	T	3	4.99966	0.026	52740	+++	IL1RN	0.950176176	A
WBC	rs6750559	2	113841532	A	G	3	4.95959	0.025	52693	+++	IL1RN	0.965087536	A
WBC	rs13382561	2	113863536	A	G	3	4.91913	0.037	52740	---	IL1RN	0.978672461	A
WBC	rs6743376	2	113832333	A	C	2	4.70749	0.014	33230	++?	IL1RN	0.987017286	A
WBC	rs7574159	2	113859761	A	G	3	4.43428	0.025	52740	+++	IL1RN	0.991465721	A
WBC	rs10171839	2	219051314	A	G	3	4.99431	0.71	52685	-++	ARPC2,TRNA	0.9604962	B
WBC	rs13026485	2	219057984	C	T	3	5.63031	0.011	52698	+++	ARPC2,TRNA	0.910468592	B
WBC	rs6752254	2	219058743	C	T	3	4.9914	0.026	52740	---	ARPC2,TRNA	0.966542104	B
WBC	rs10206984	2	219066980	C	T	3	4.99748	0.039	52740	+-	ARPC2,TRNA	0.954409649	B
WBC	rs13384682	2	219069137	A	G	3	5.16233	0.056	52740	-++	ARPC2,TRNA	0.933189765	B
WBC	rs13393821	2	219076742	C	G	3	4.61738	0.155	52740	+-	ARPC2,TRNA	0.990878058	B
WBC	rs12694432	2	219082330	A	G	3	5.34854	0.049	52740	+-	ARPC2,TRNA	0.924228048	B
WBC	rs7578940	2	219083318	G	T	3	6.17796	0.026	52737	+++	ARPC2,TRNA	0.805936872	B
WBC	rs4674274	2	219089131	A	T	3	4.64791	0.167	52740	-++	ARPC2,TRNA	0.988322762	B
WBC	rs4674275	2	219097738	A	G	3	4.86409	0.093	52740	+-	ARPC2,TRNA	0.982434553	B
WBC	rs10932765	2	219099484	C	T	3	6.95452	0.025	52740	+++	ARPC2,TRNA	0.55536852	B
WBC	rs7605980	2	219100869	C	G	3	4.95231	0.099	52683	-++	ARPC2,TRNA	0.977924816	B
WBC	rs10169718	2	219103580	A	G	3	5.84272	0.048	52701	+-	ARPC2,TRNA	0.848868885	B
WBC	rs6436047	2	219108913	A	C	3	5.07854	0.146	52701	+-	ARPC2,TRNA	0.948278508	B
WBC	rs6436048	2	219109033	A	G	3	4.97763	0.097	52701	-++	ARPC2,TRNA	0.97239932	B
WBC	rs6738394	2	219110625	A	G	3	5.0964	0.097	52740	+-	ARPC2,TRNA	0.940889243	B
WBC	rs13392177	2	219112956	C	T	3	5.7574	0.029	52665	+++	ARPC2,TRNA	0.884143417	B
WBC	rs13430006	2	219113089	G	T	3	6.40768	0.016	52668	---	ARPC2,TRNA	0.713035686	B
WBC	rs3731859	2	219124222	A	G	3	4.70781	0.024	52740	+++	ARPC2,TRNA	0.985581369	B
WBC	rs3806792	4	74965274	C	T	3	11.40926	1	52739	+-	NA	0.988197424	
WBC	rs7667376	4	74967890	C	T	3	12.95485	1	52740	-++	NA	0.983622655	
WBC	rs1371798	4	74976781	C	T	3	11.35837	1	52740	-++	NA	0.992266343	
WBC	rs1371799	4	74977837	C	T	3	13.49611	1	52740	+-	NA	0.558752008	
WBC	rs1866755	4	74978340	C	T	3	13.17081	1	52690	-++	NA	0.822943664	
WBC	rs2853946	6	31247203	A	T	3	12.15511	0.009	52740	---	HLA-B	0.996632812	A
WBC	rs45855	6	32189481	A	T	3	4.70607	0.009	51806	+++	Several, HLA	0.990319437	B
WBC	rs9267972	6	32217232	A	G	2	6.0505	0.012	36352	?--	Several, HLA	0.93845529	B
WBC	rs3115572	6	32220484	C	G	3	5.38859	0.037	52673	---	Several, HLA	0.971244947	B
WBC	rs9268402	6	32341353	A	G	3	6.51568	0.006	52702	+++	Several, HLA	0.866294331	B
WBC	rs9268473	6	32355683	A	G	3	5.5005	0.01	52739	---	Several, HLA	0.965853416	B

Table S3. Credible Interval Statistics

WBC	rs7194	6	32412480	A	G	3	5.45412	0.017	41911	+++	Several, HLA	0.968752176	B
WBC	rs1051336	6	32412592	A	G	3	4.95743	0.014	52692	---	Several, HLA	0.982602579	B
WBC	rs1041885	6	32412809	A	T	3	4.85516	0.011	51806	---	Several, HLA	0.986669768	B
WBC	rs2227139	6	32413459	A	G	3	4.94958	0.024	52740	+++	Several, HLA	0.983509715	B
WBC	rs3763327	6	32413830	C	G	3	5.09542	0.017	52740	+++	Several, HLA	0.98051656	B
WBC	rs9286790	6	32439828	A	G	3	5.20455	0.015	52740	+++	Several, HLA	0.974799402	B
WBC	rs12194148	6	32444198	G	T	3	5.13929	0.854	52740	+--	Several, HLA	0.979247412	B
WBC	rs9378212	6	32445691	C	T	3	5.17552	0.762	52740	+--	Several, HLA	0.976325605	B
WBC	rs9378213	6	32448398	G	T	3	4.93964	0.781	52740	-++	Several, HLA	0.984396325	B
WBC	rs9391786	6	32448561	A	G	3	7.05769	0.026	52740	---	Several, HLA	0.832892343	B
WBC	rs5020946	6	32450089	G	T	3	4.85706	0.733	52710	+--	Several, HLA	0.985939886	B
WBC	rs9270657	6	32566021	G	T	3	5.8223	0.995	52740	+--	Several, HLA	0.95652103	B
WBC	rs602875	6	32573629	A	G	2	7.59229	1	36352	?-+	Several, HLA	0.398457786	B
WBC	rs615672	6	32574171	C	G	3	4.90065	0.014	52614	---	Several, HLA	0.985206805	B
WBC	rs9271562	6	32590411	A	G	2	6.50348	0.01	36352	?--	Several, HLA	0.898771063	B
WBC	rs2395225	6	32590624	C	T	2	7.23567	0.011	36352	?--	Several, HLA	0.573749876	B
WBC	rs9271586	6	32590899	G	T	2	5.17311	0.169	36352	?--	Several, HLA	0.977843363	B
WBC	rs9271850	6	32595060	A	G	2	7.1466	0.011	36352	?++	Several, HLA	0.716538075	B
WBC	rs2395237	6	32690945	A	C	3	5.27583	0.012	51716	---	Several, HLA	0.973167695	B
WBC	rs9469246	6	32692227	G	T	3	4.84978	0.797	52673	-++	Several, HLA	0.987390663	B
WBC	rs1383264	6	32739967	A	T	3	5.77773	0.008	52640	---	Several, HLA	0.962627951	B
WBC	rs3117016	6	33095516	A	G	3	6.14184	0.035	52701	+++	Several, HLA	0.912894237	B
WBC	rs3117014	6	33095615	C	T	3	5.05724	0.214	52740	-++	Several, HLA	0.981678898	B
WBC	rs3117013	6	33095636	A	G	3	6.14164	0.018	52740	---	Several, HLA	0.927010909	B
WBC	rs3130234	6	33096009	A	C	3	4.77032	0.022	52740	---	Several, HLA	0.989258646	B
WBC	rs3117008	6	33096274	A	G	3	4.7826	0.029	52740	+++	Several, HLA	0.988658285	B
WBC	rs3117007	6	33096514	C	G	3	4.7267	0.014	52740	+++	Several, HLA	0.989801637	B
WBC	rs3117005	6	33096755	A	G	3	4.80485	0.023	52740	---	Several, HLA	0.988040706	B
WBC	rs3129207	6	33125312	C	G	3	6.04494	0.011	52699	+++	Several, HLA	0.94975409	B
WBC	rs9376090	6	135411228	C	T	3	8.98253	0.022	43711	---	HBS1L	0.95209774	C
WBC	rs7776054	6	135418916	A	G	3	8.47363	0.054	52740	+++	HBS1L	0.988485197	C
WBC	rs11759553	6	135422296	A	T	3	8.6132	0.895	52740	-++	HBS1L	0.981048367	C
WBC	rs9373124	6	135423209	C	T	3	8.38179	0.767	52740	+--	HBS1L	0.994504523	C
WBC	rs4895440	6	135426558	A	T	3	8.87397	0.969	52740	-++	HBS1L	0.970792843	C
WBC	rs4895441	6	135426573	A	G	3	9.63521	0.165	52703	+++	HBS1L	0.86513885	C
WBC	rs9389269	6	135427159	C	T	3	9.40127	0.276	52740	+--	HBS1L	0.928093506	C
WBC	rs9402686	6	135427817	A	G	3	10.38729	0.055	52740	---	HBS1L	0.609604066	C
WBC	rs6920211	6	135431318	C	T	3	9.77147	0.167	52732	---	HBS1L	0.757252163	C
WBC	rs445	7	92408370	C	T	3	16.80458	1	52740	-++	CDK6	1	
WBC	rs2894479	8	130584161	A	C	2	6.64341	0.116	33223	--?	CCDC26	0.950697794	
WBC	rs10956484	8	130588520	A	G	2	6.66953	0.15	32297	--?	CCDC26	0.886495614	
WBC	rs2163950	8	130597585	A	C	3	7.74878	0.065	52740	---	CCDC26	0.818313608	
WBC	rs1433578	8	130601089	C	T	3	6.31136	0.593	52740	+--	CCDC26	0.980585995	
WBC	rs13263733	8	130661418	A	G	2	5.90041	0.026	36352	?--	CCDC26	0.992188447	

Table S3. Credible Interval Statistics

WBC	rs2241245	17	38151014	C	T	3	30.26561	1	52740	---	PSMD3	0.47512314
WBC	rs4065321	17	38143548	C	T	3	29.70093	1	52740	---	PSMD3	0.604580332
WBC	rs4794822	17	38156712	C	T	3	29.64331	1	52740	---	PSMD3	0.71795243
WBC	rs9915252	17	38145088	C	G	3	29.58448	0.029	52740	+++	PSMD3	0.816961774
WBC	rs8073254	17	38149350	C	G	3	29.55371	0.034	52740	+++	PSMD3	0.909198989
WBC	rs2305482	17	38140927	A	C	3	29.36374	0.018	52701	+++	PSMD3	0.968756451
WBC	rs11658328	17	38149236	C	T	3	29.08263	1	52740	---	PSMD3	0.999932867

Variants encompassing the 95% credible region of an associated region, as identified using the top hits from the MANTRA analysis, are presented for each subtype. PPA = posterior probability of association; the probability that a SNP is truly associated with a phenotype. \*set95 = 95% credible set.

Table S4. Summarized eQTL Results

Blood Cell GWAS SNP	Position (b37)	Blood Cell Trait	Relation To Esnp	R <sup>2</sup>	eQTL SNP	chr	pos(hg18)	Tissue	eQTL p-value	Transcript	Best eSNP For Transcript	Best eSNP p-value	R <sup>2</sup> (CEU) to Blood Cell GWAS SNP*
rs2853946	31247203	WBC	C_SentinelSNP	1	rs2853946	6	31355182	LCL (MuTHER)	7.53E-05	BAT1	rs206017	2.06E-06	>500kb
rs2853946	31247203	WBC	Proxy:ASN,Rel22	0.645	rs3094691	6	31382672	LCL (MuTHER)	1.09E-06	MICB	rs2844498	4.06E-12	0.34
rs2853946	31247203	WBC	Proxy:YRI,Rel22	0.554	rs3130521	6	31304355	LCL (MuTHER)	2.28E-09	TCF19	rs887464	1.20E-14	0.333
rs6936204	32217092	Neutrophil	C_SentinelSNP	1	rs6936204	6	32325070	Whole Blood**	0.00E+00	HLA-DRB5	rs9270986	0.00E+00	0.278
rs6936204	32217092	Neutrophil	Proxy:YRI,Rel22	0.848	rs1559873	6	32351107	Whole Blood**	0.00E+00	HLA-DRB5	rs9270986	0.00E+00	0.057
rs6936204	32217092	Neutrophil	Proxy:ASN,Rel22	0.653	rs9268557	6	32497283	Whole Blood**	0.00E+00	HLA-DRB5	rs9270986	0.00E+00	0.256
rs6936204	32217092	Neutrophil	C_SentinelSNP	1	rs6936204	6	32325070	LCL (MuTHER)	1.06E-05	ATP6V1G2	rs3132454	4.90E-14	>500kb
rs6936204	32217092	Neutrophil	Proxy:ASN,Rel22	1	rs3130320	6	32331236	LCL (MuTHER)	3.01E-06	ATP6V1G2	rs3132454	4.90E-14	>500kb
rs6936204	32217092	Neutrophil	Proxy:YRI,H3	0.781	rs3096674	6	32346197	LCL (MuTHER)	1.13E-06	HLA-DPB1	rs7772134	0.00E+00	>500kb
rs3095254	31221668	Monocyte	Proxy:ASN,Rel22	0.565	rs879882	6	31247431	LCL (MuTHER)	2.25E-10	TCF19	rs887464	1.20E-14	0.198
rs3095254	31221668	Monocyte	Proxy:YRI,Rel22	0.737	rs3130409	6	31321790	LCL (MuTHER)	2.00E-06	TCF19	rs887464	1.20E-14	0.301
rs3095254	31221668	Monocyte	C_SentinelSNP	1	rs3095254	6	31329647	LCL (MuTHER)	1.54E-12	TCF19	rs887464	1.20E-14	0.371
rs1449263	182319301	Monocyte	Proxy:YRI,Rel22	0.539	rs1449260	2	182041692	Monocytes	4.16E-13	ITGA4	rs2124440	0.00E+00	0.329
rs1449263	182319301	Monocyte	Proxy:ASN,H3	0.983	rs6740847	2	182016597	Monocytes (CD14+)	0.00E+00	ITGA4	rs1449263	0.00E+00	0.967
rs1449263	182319301	Monocyte	C_SentinelSNP	1	rs1449263	2	182027546	Monocytes (CD14+)	0.00E+00	ITGA4	rs1449263	0.00E+00	1-sameSNP

Table 6. Summarized results of the eQTL analysis are reported (all cis). \*Not in HapMap build, \*\* Pax Gene Whole Blood (Mehta). The final R<sup>2</sup> column includes only European ancestry tissue types.