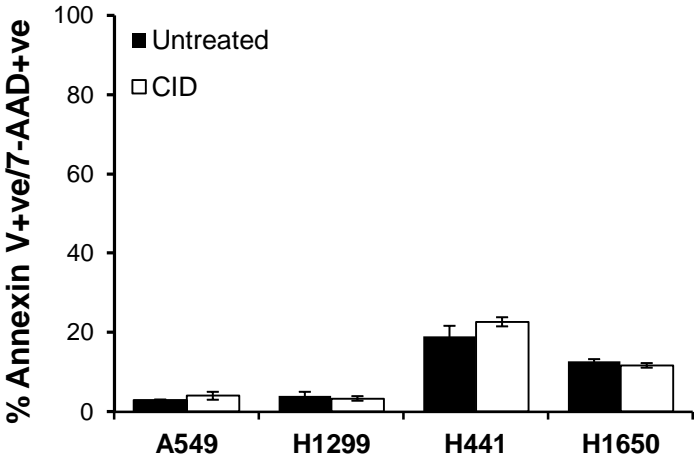
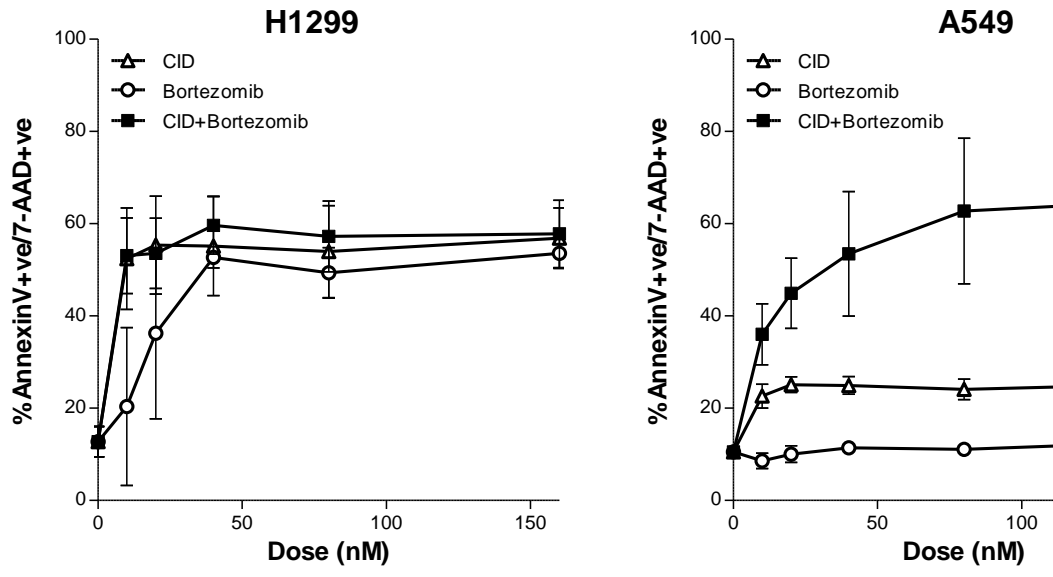


Figure S1



Supplemental Figure 1: CID does not induce apoptosis of NSCLC cells. NSCLC cell lines were left untreated or treated with CID (80nM) for 24 hr. Apoptosis was assessed by flow cytometry for Annexin V binding and 7AAD-staining cells 24 hours after treatment. Error bars represent standard deviation.

Figure S2



Supplemental Figure 2: Bortezomib enhances CID-induced apoptosis of iC9-transduced cells. iC9 transduced H1299 (*left*) and A549 (*right*) cells were exposed to the indicated amounts of CID, bortezomib or a combination of both drugs. Apoptosis was measured by flow cytometry for Annexin V/7AAD staining 24 hr after treatment. Error bars represent standard deviation. This data was used to generate the dose-effect curves shown in Figure 2b and c.