

***ARABIDOPSIS* HOMOLOG of *TRITHORAX1* (*ATX1*) is required for cell production, patterning, and morphogenesis in root development**

Selene Napsucialy-Mendivil, Raúl Alvarez-Venegas, Svetlana Shishkova, and Joseph G. Dubrovsky

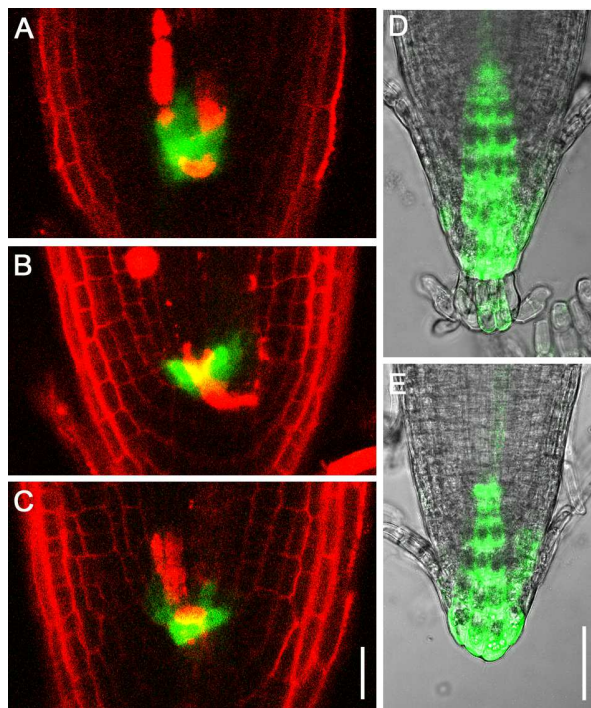


Figure S1. Expansion of the *pWOX5::GFP* expression domain and the auxin response in the primary root apical meristem of the *atx1-1* mutant. (A-C) Root apical meristem (RAM) of *atx1-1* seedlings, $n = 29$. (D and E) *DR5rev::GFP* expression in Wt (Ws) (D) and *atx1-1* (E) primary roots; $n = 12-15$ in three independent experiments; 8 dpg plants were analyzed. Bar = 50 μm .

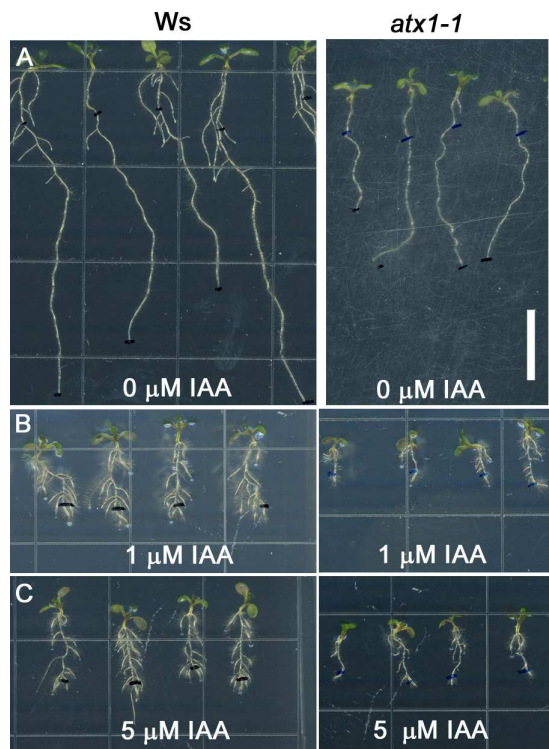


Figure S2. Effect of auxin on root development in Wt (*Ws*) and *atx1-1* plants. (A) *Ws* and *atx1-1* seedlings at 8 dpg. (B, C) Seedlings were germinated and grown for 3 days in normal medium and then transferred to the same medium or media supplemented with 1 or 5 μM IAA and grown for five additional days. (D) Primary root length of untreated and IAA-treated seedlings at 8 dpg, $n = 8$. (E) Expression analysis of *IAA14* by RT-qPCR. Plant material was harvested from the roots of 8-dpg *Ws* and *atx1-1* seedlings untreated or treated with 1 μM NAA for 12 hours. Data were normalized for the expression level of two reference genes, *UBQ10* and *EF1 α* . Means \pm SE of two independent experiments are shown. Scale bar = 10 mm.

