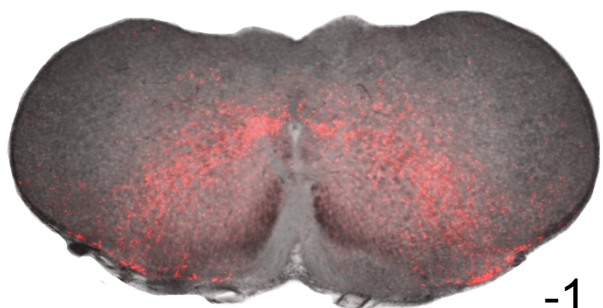


Atlas of tdTomato Fluorescence in *Dbx1* mouse (P4) medulla oblongata

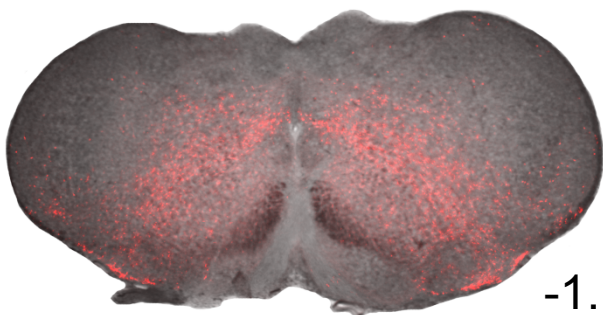
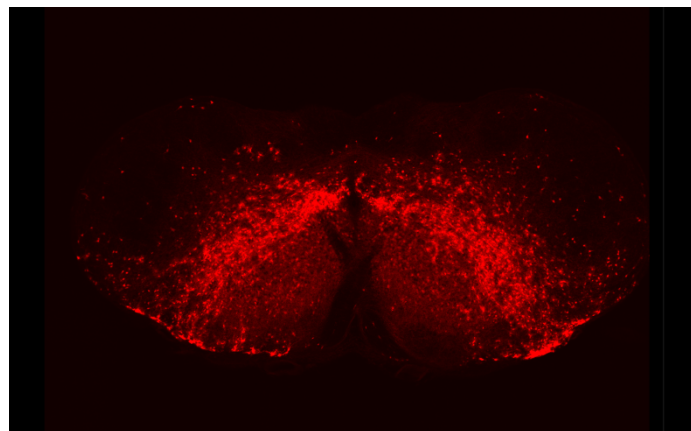
Ruangkittisakul A¹, Kottick A², Picardo MCD²,
Ballanyi K^{1*}, Del Negro CA^{2*}

¹ Department of Physiology, University of Alberta,
Edmonton, AB, Canada

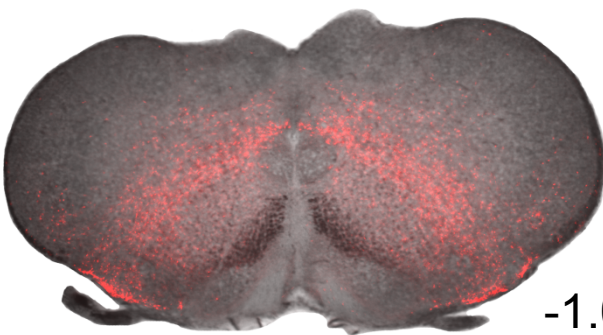
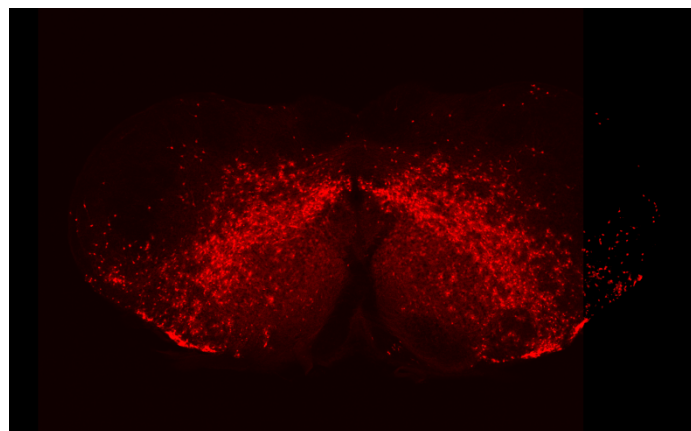
² Department of Applied Science, The College of William & Mary,
Williamsburg, VA, USA



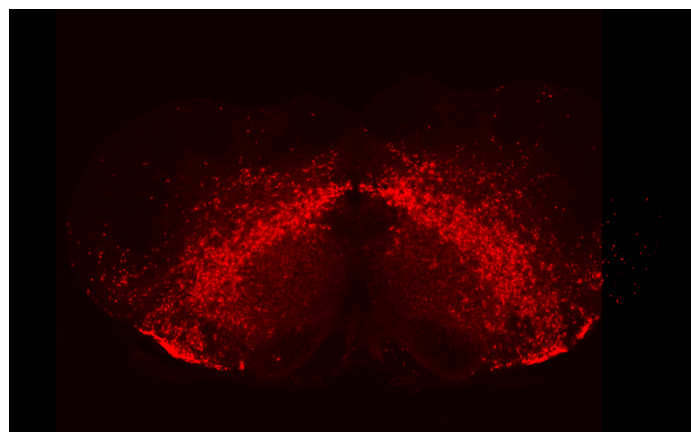
-1.15
mm

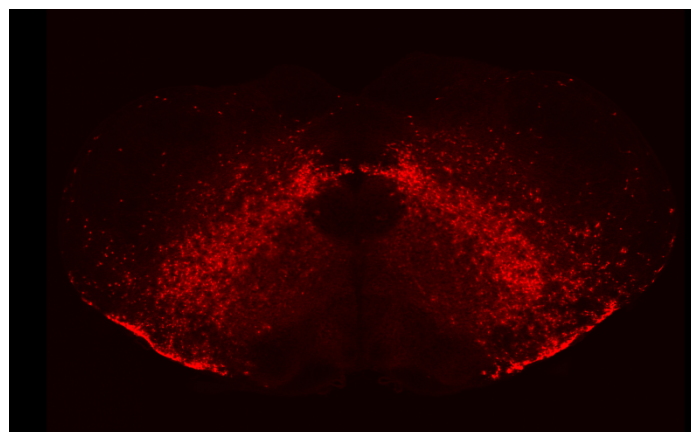
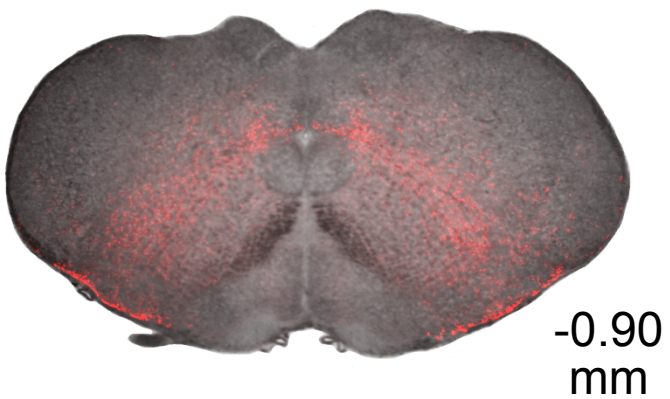
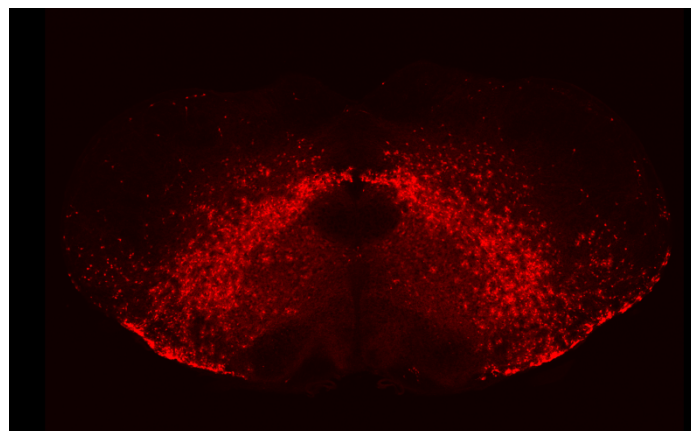
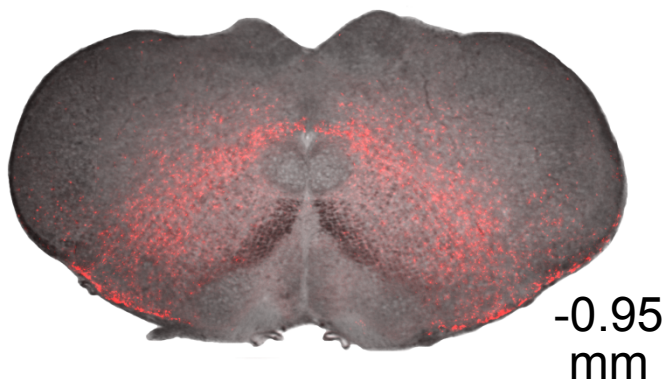
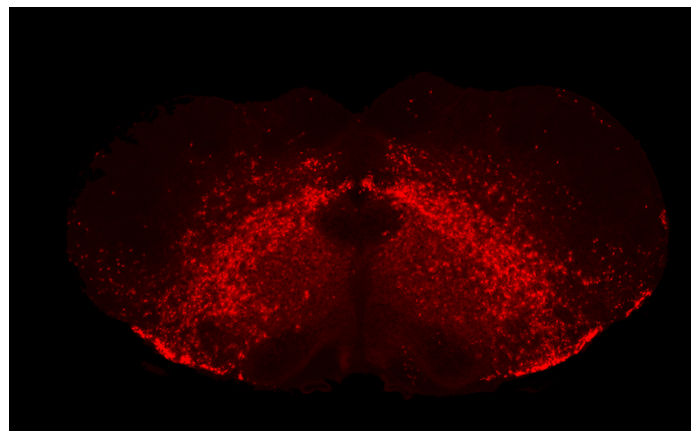
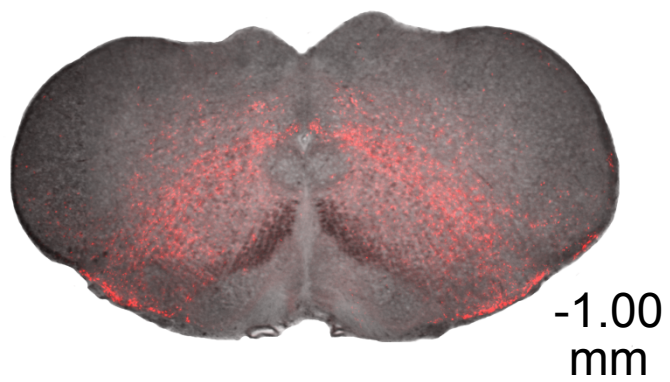


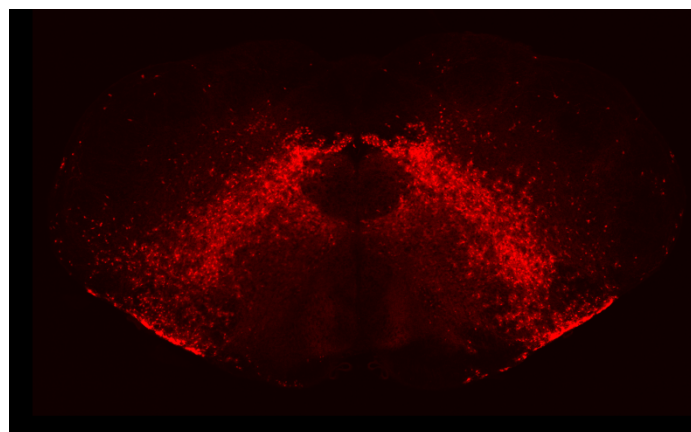
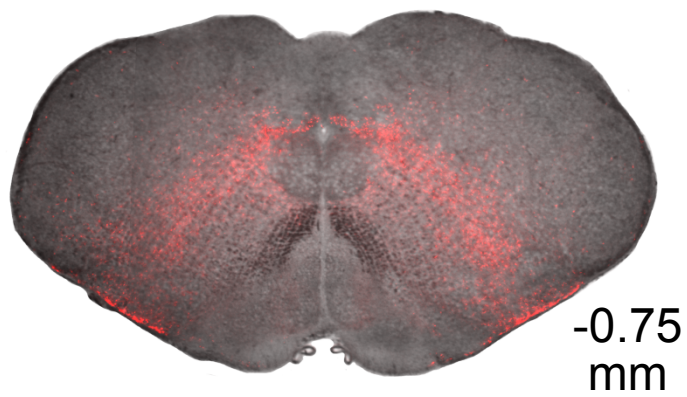
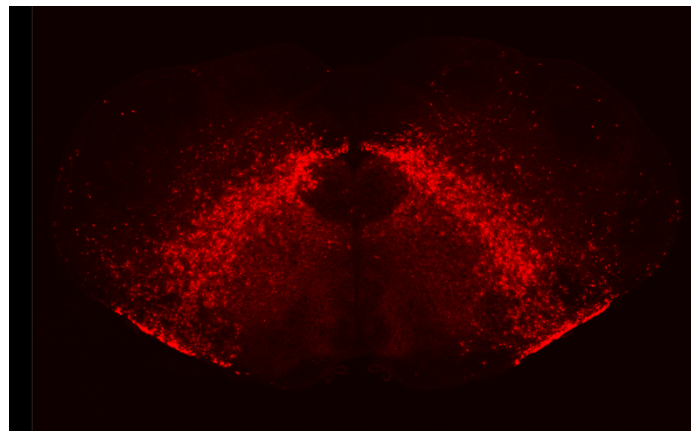
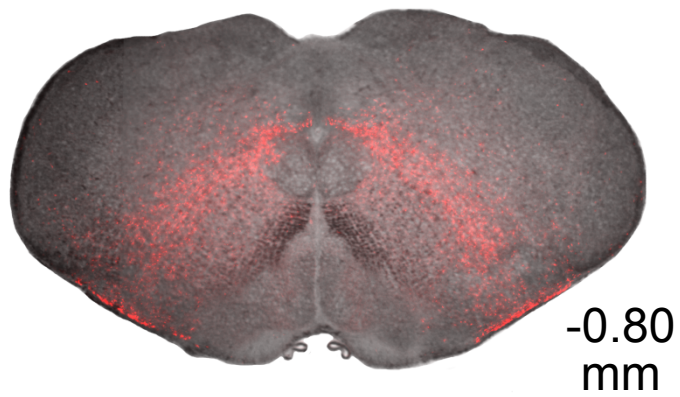
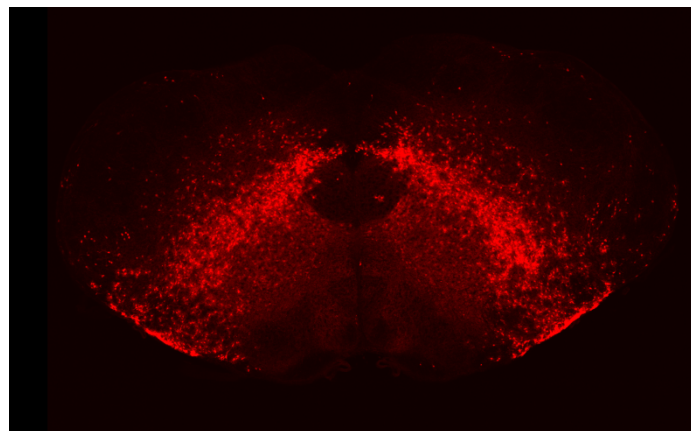
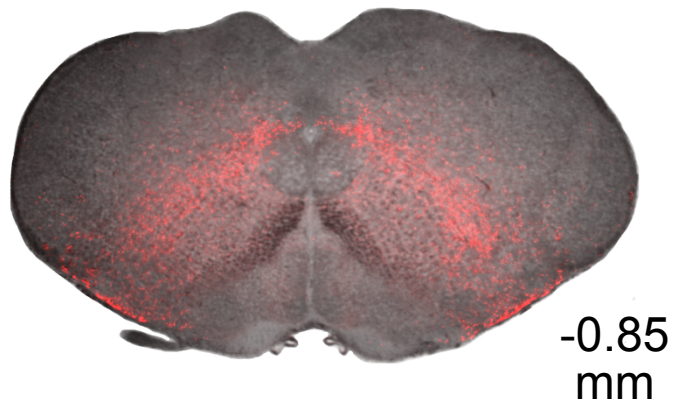
-1.10
mm

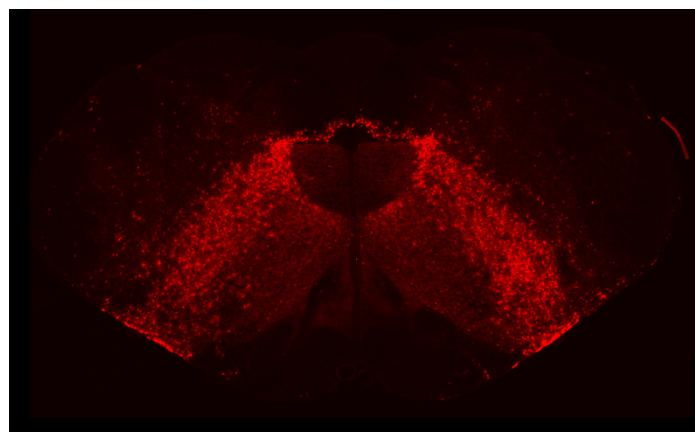
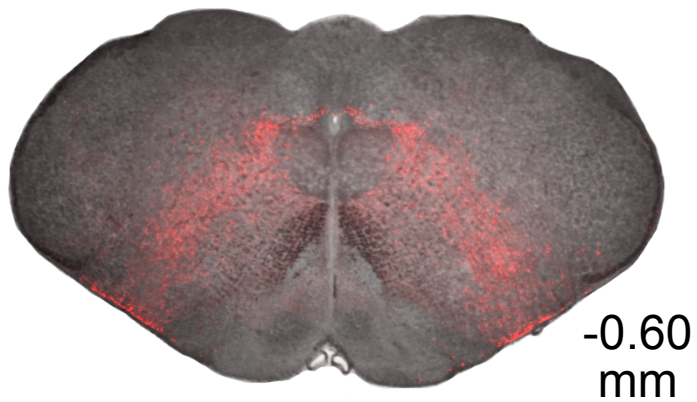
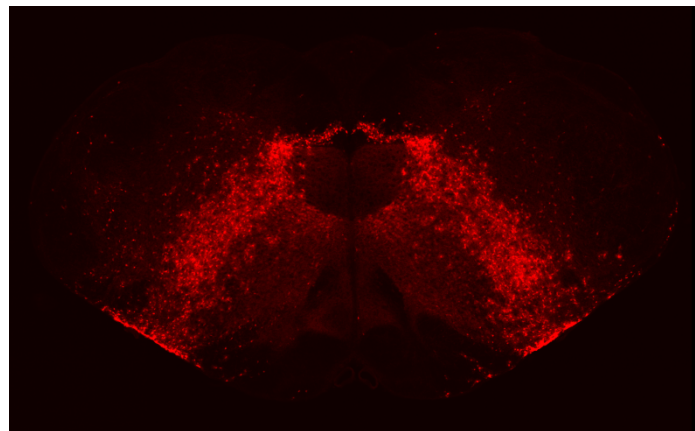
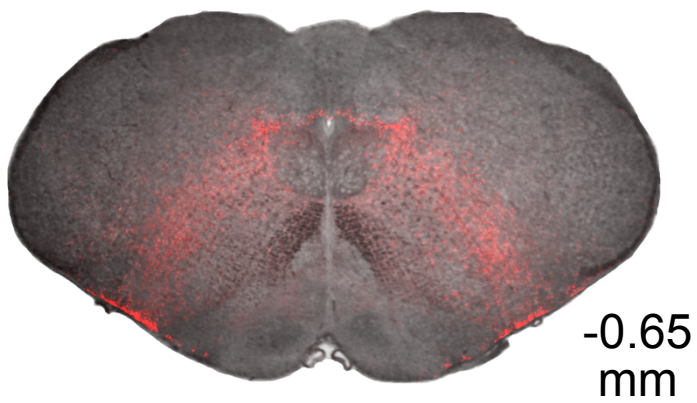
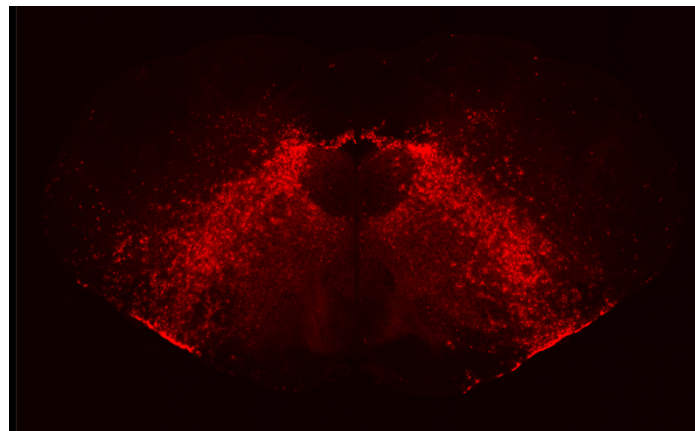
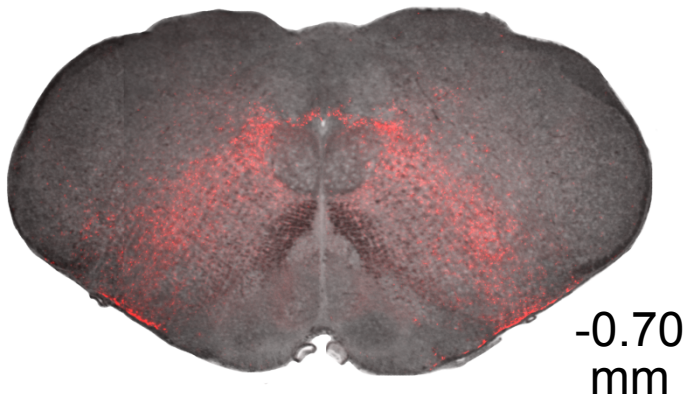


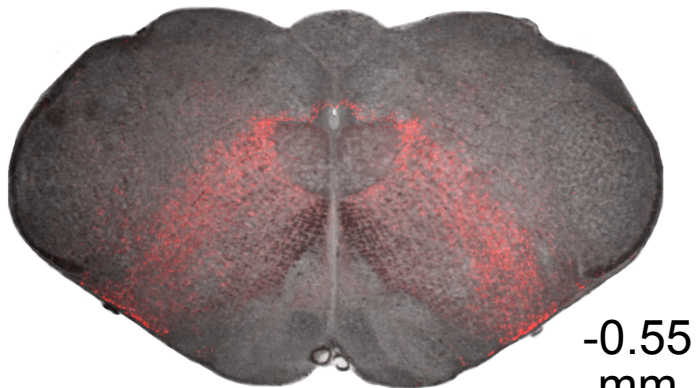
-1.05
mm



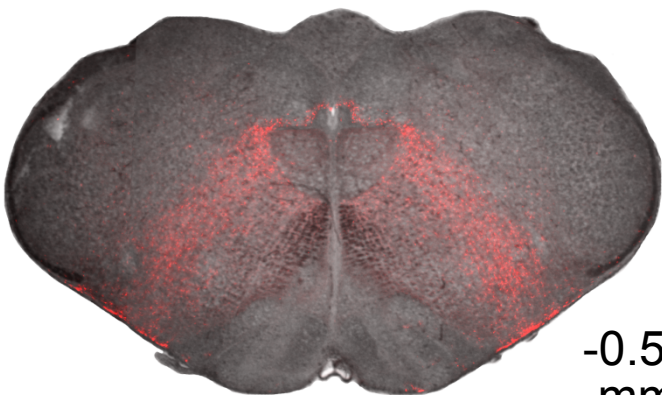
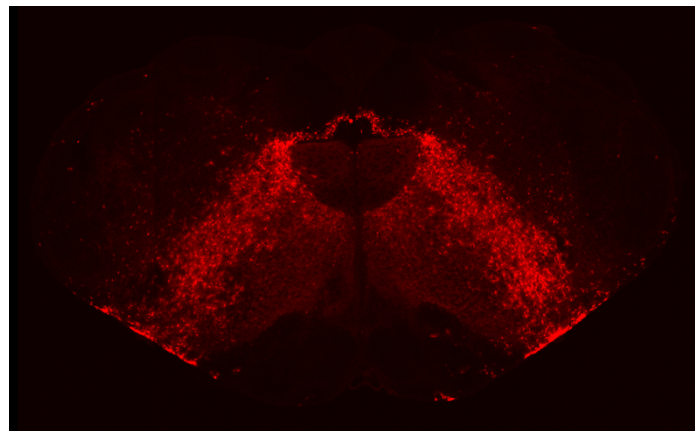




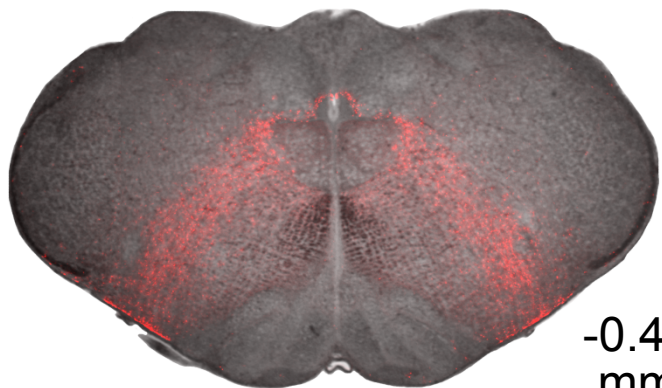
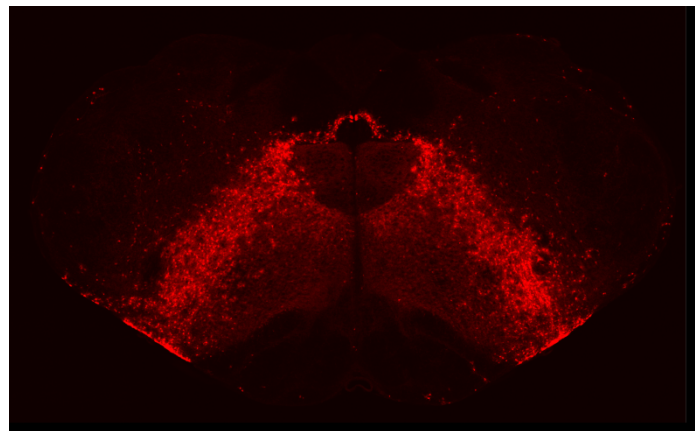




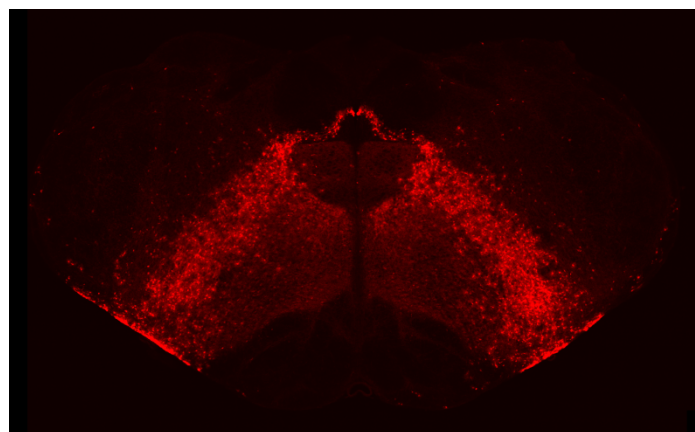
-0.55
mm

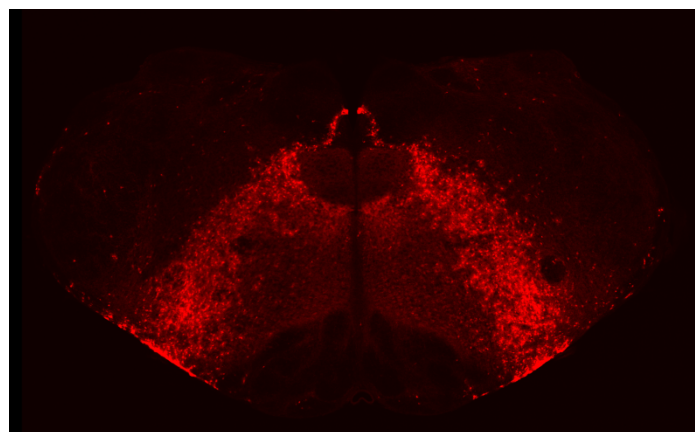
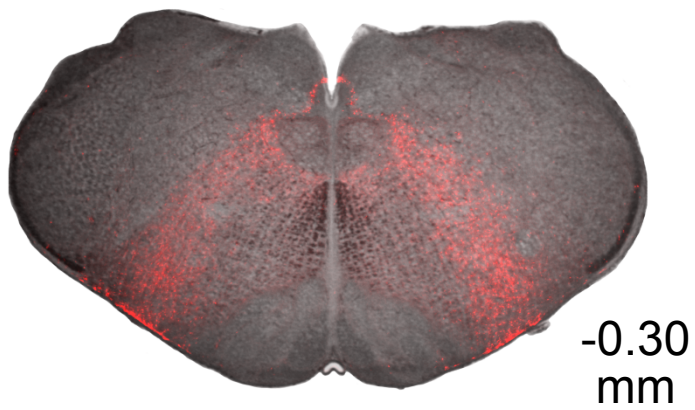
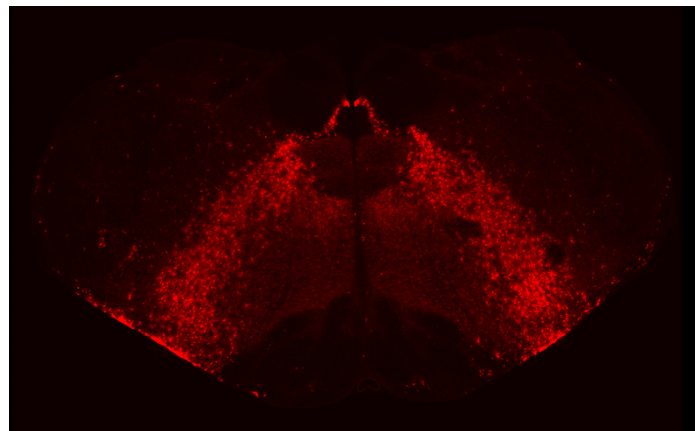
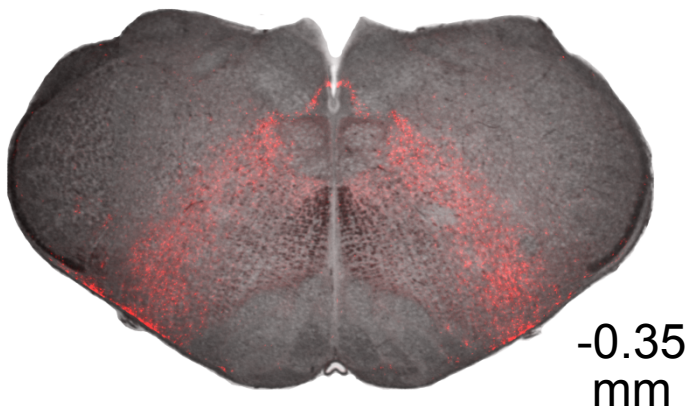
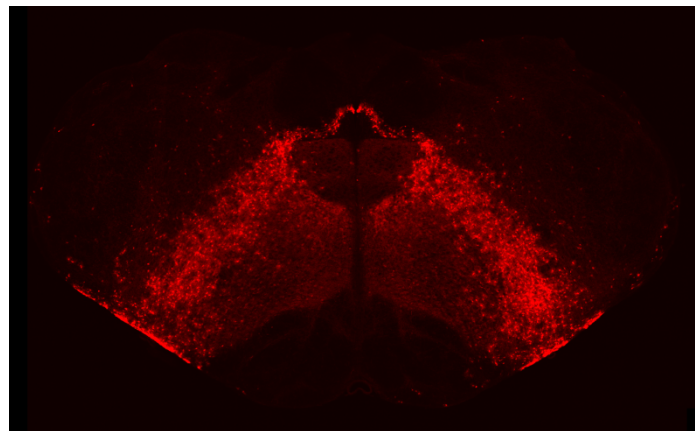
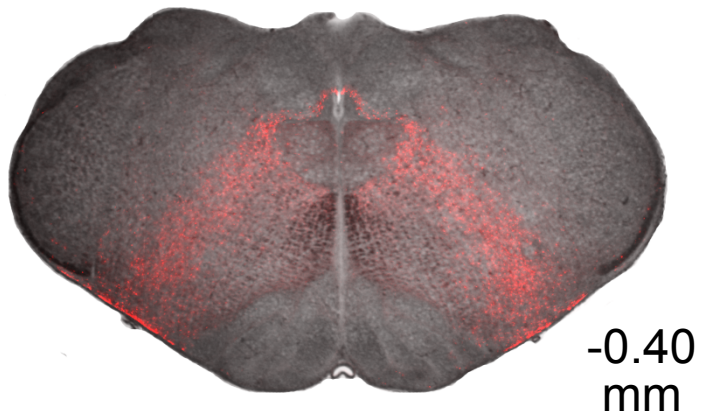


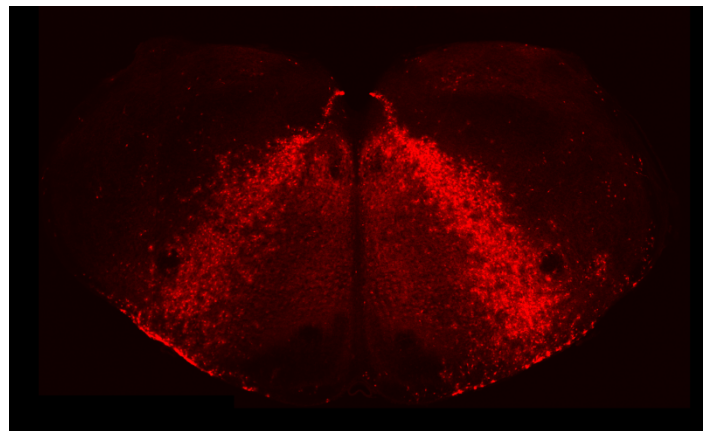
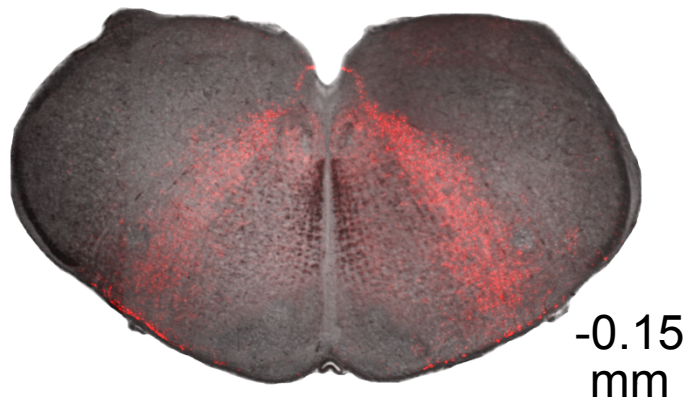
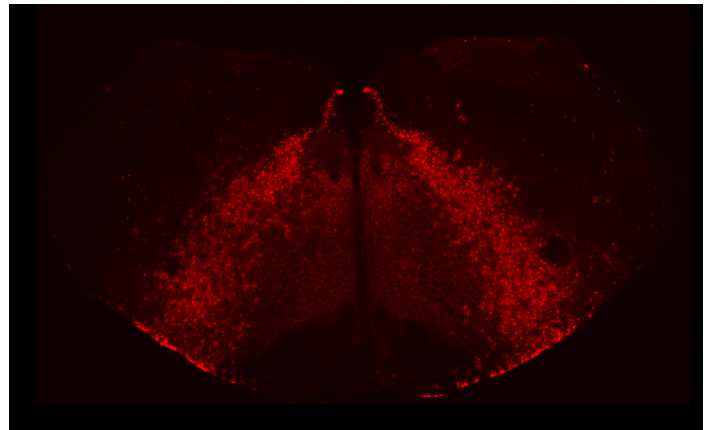
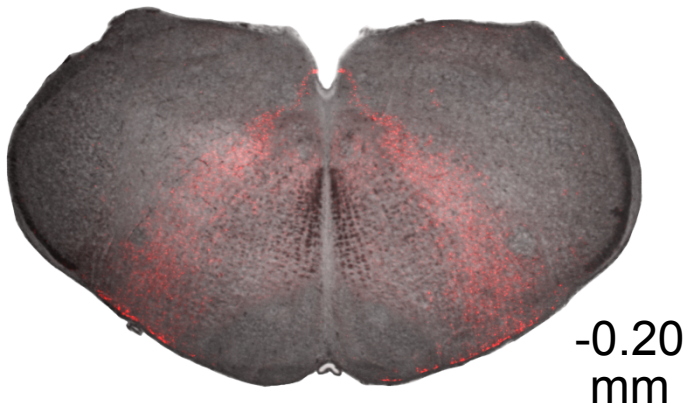
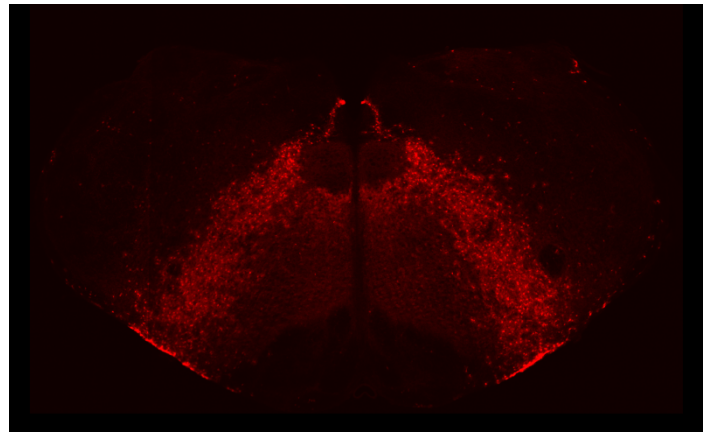
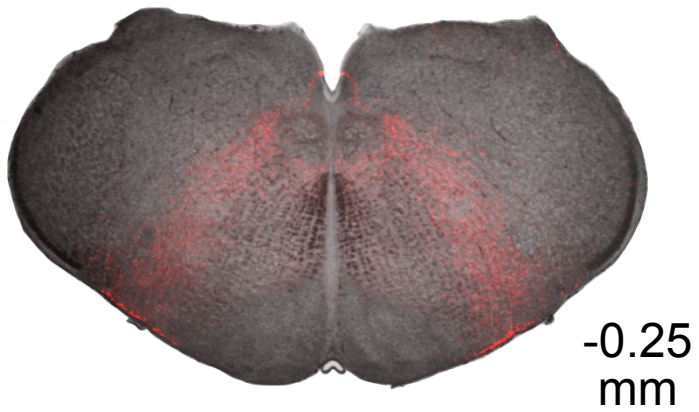
-0.50
mm

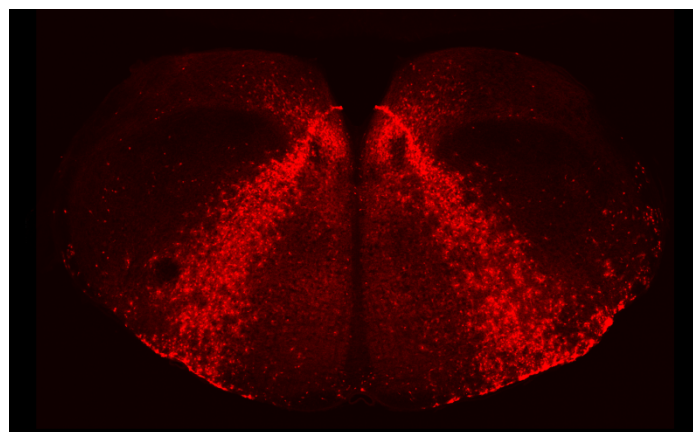
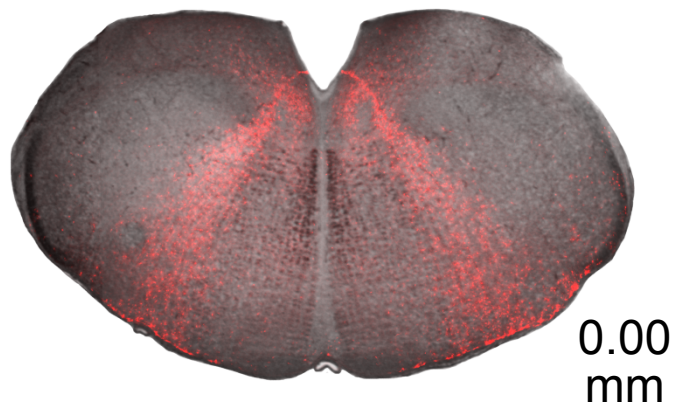
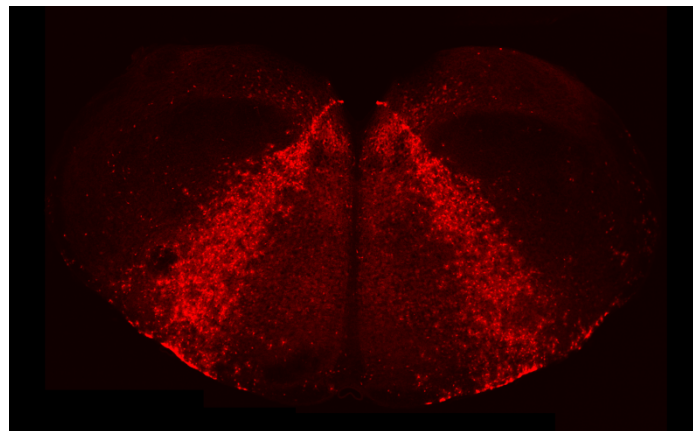
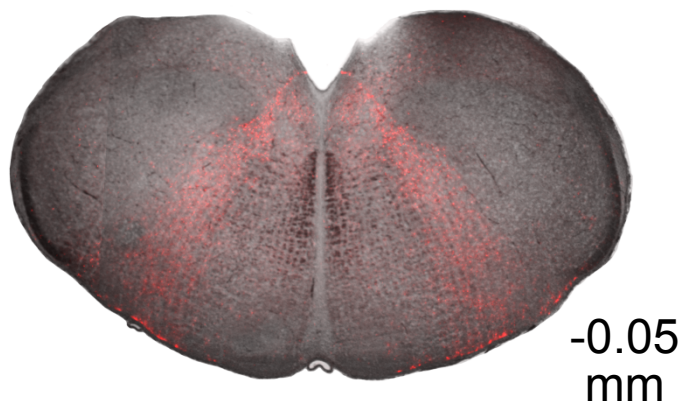
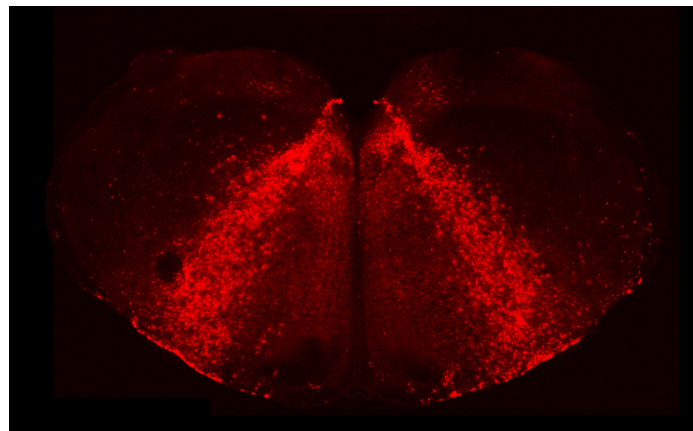
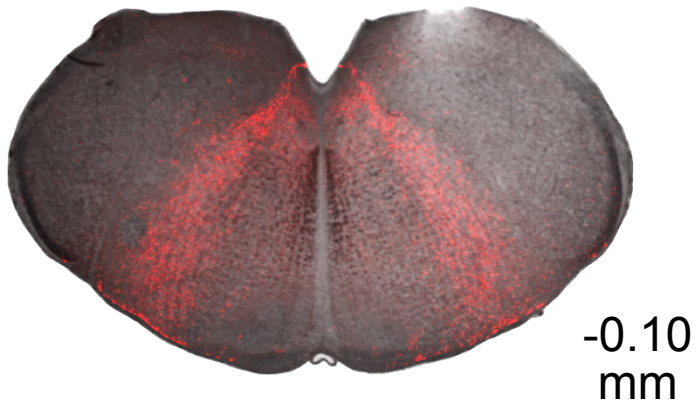


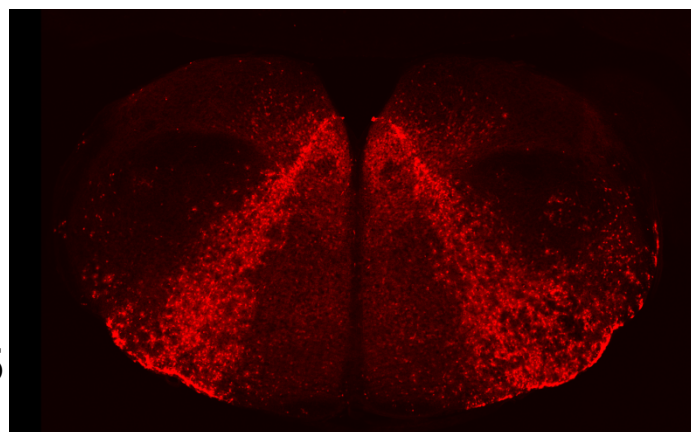
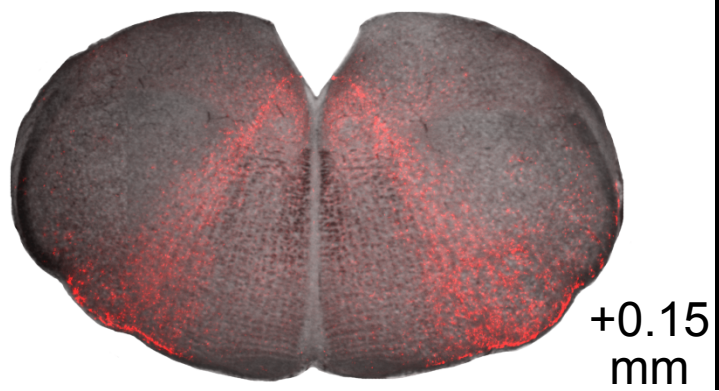
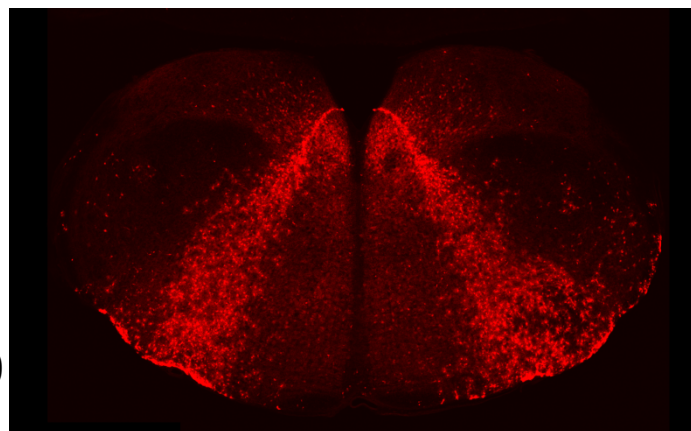
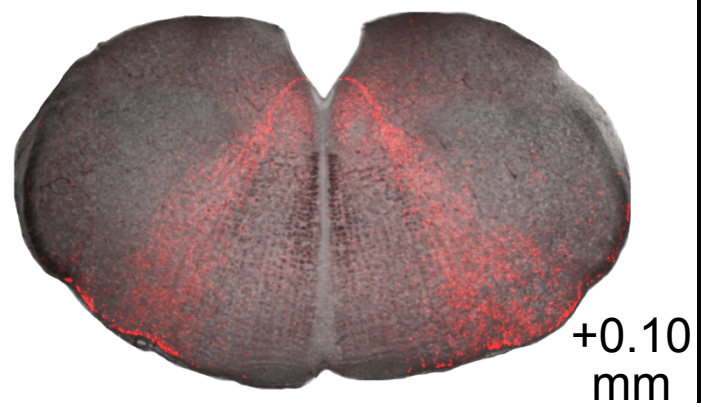
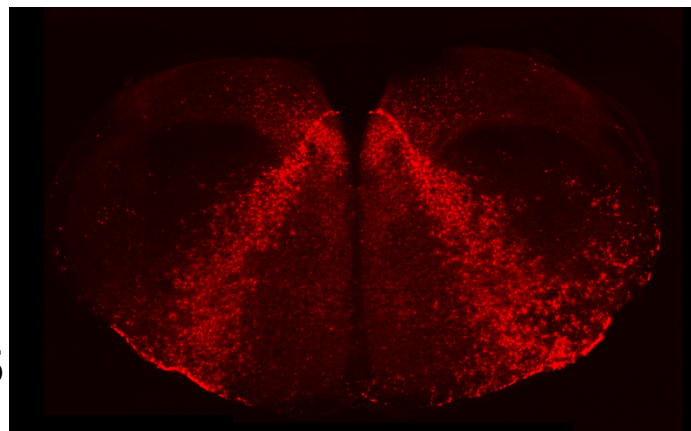
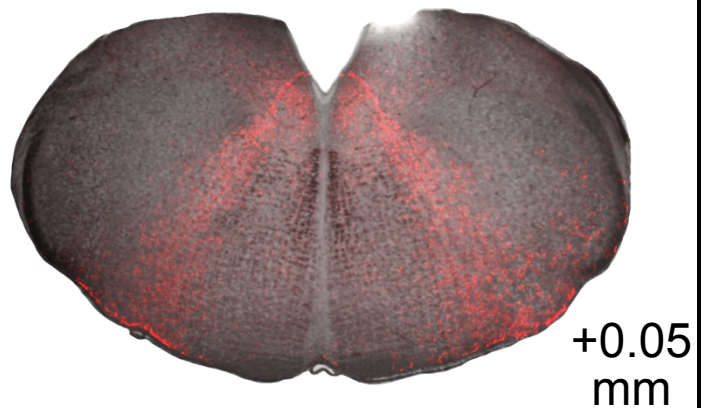
-0.45
mm

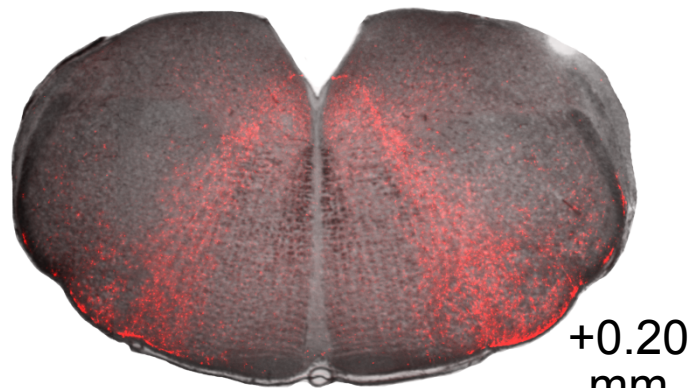




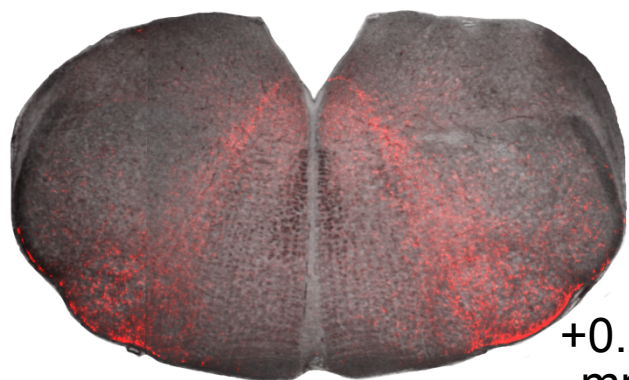
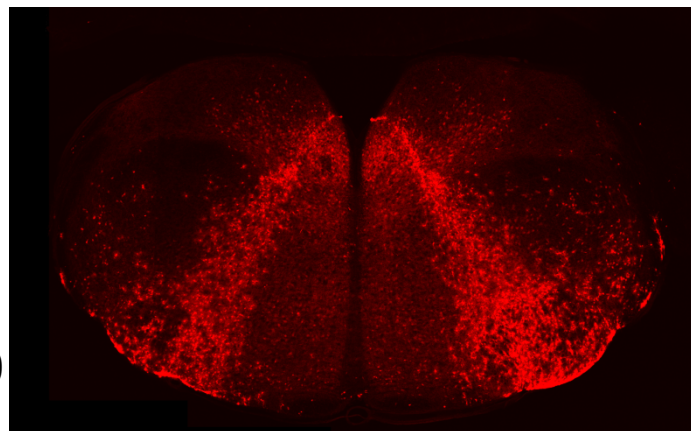




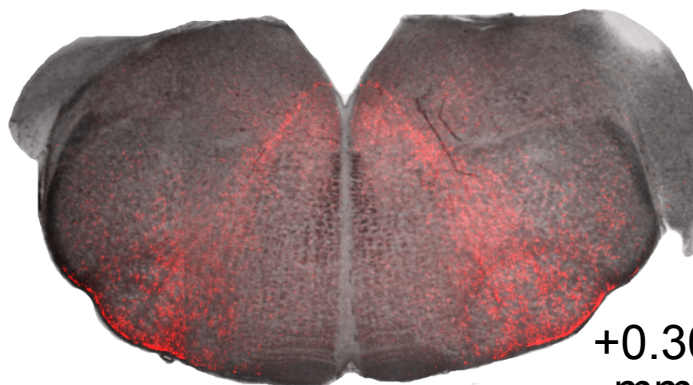
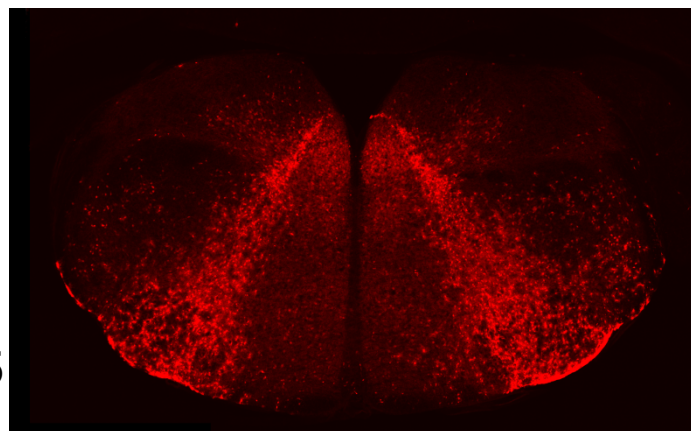




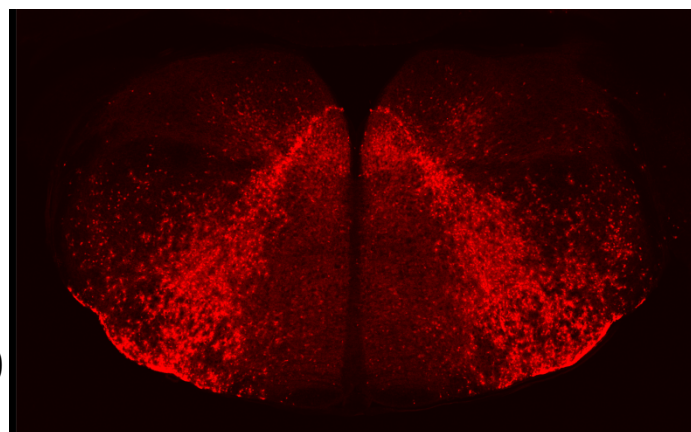
+0.20
mm

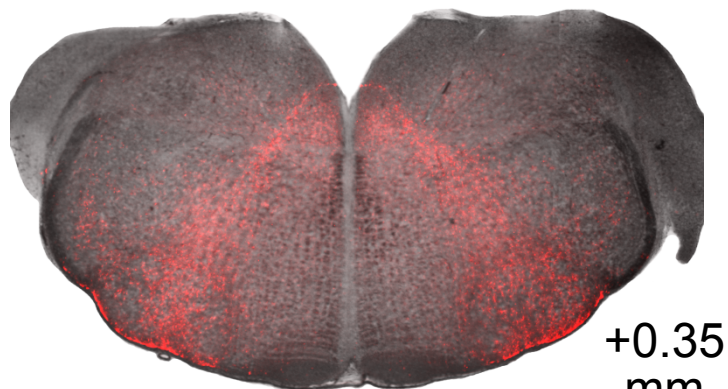


+0.25
mm

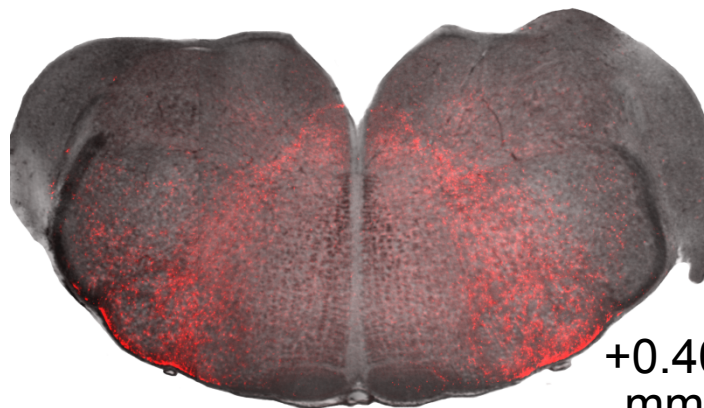
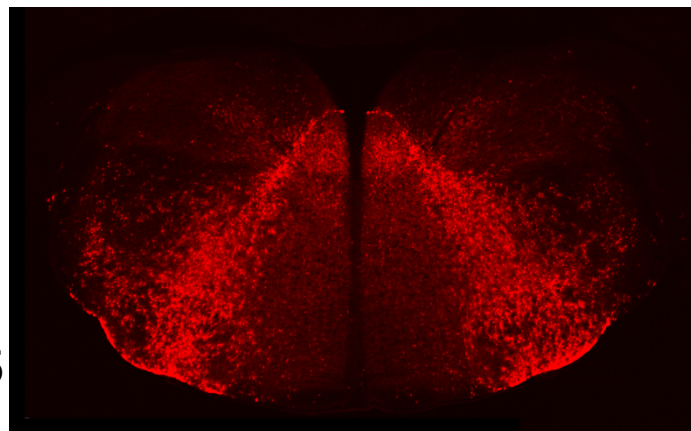


+0.30
mm

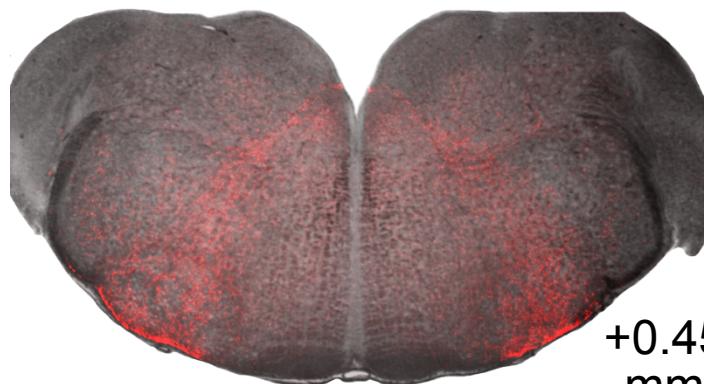
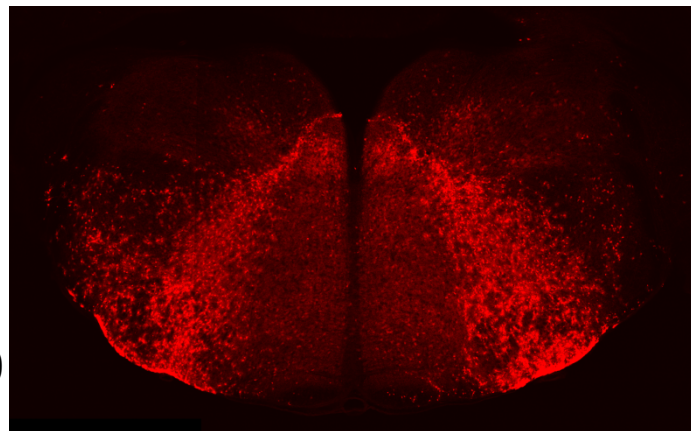




+0.35
mm



+0.40
mm



+0.45
mm

