

Supplementary data

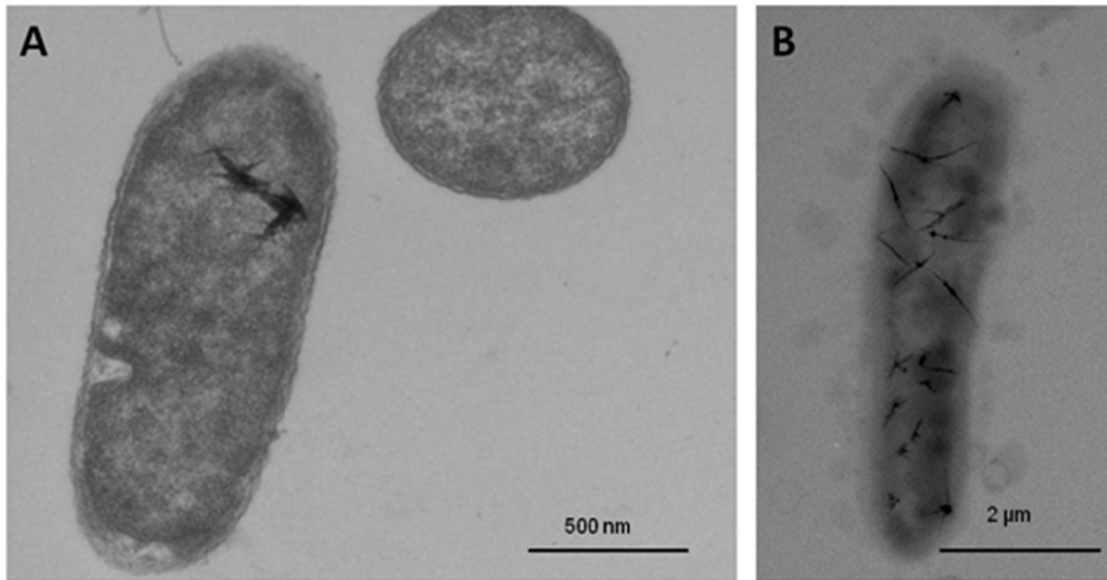


Fig. S1. TEM micrograph of ultrathin stained sections (A), and of whole unstained cells (B) of *Pseudomonas* sp. BNF22 exposed to tellurite ($\frac{1}{4}$ MIC) for 14 h.

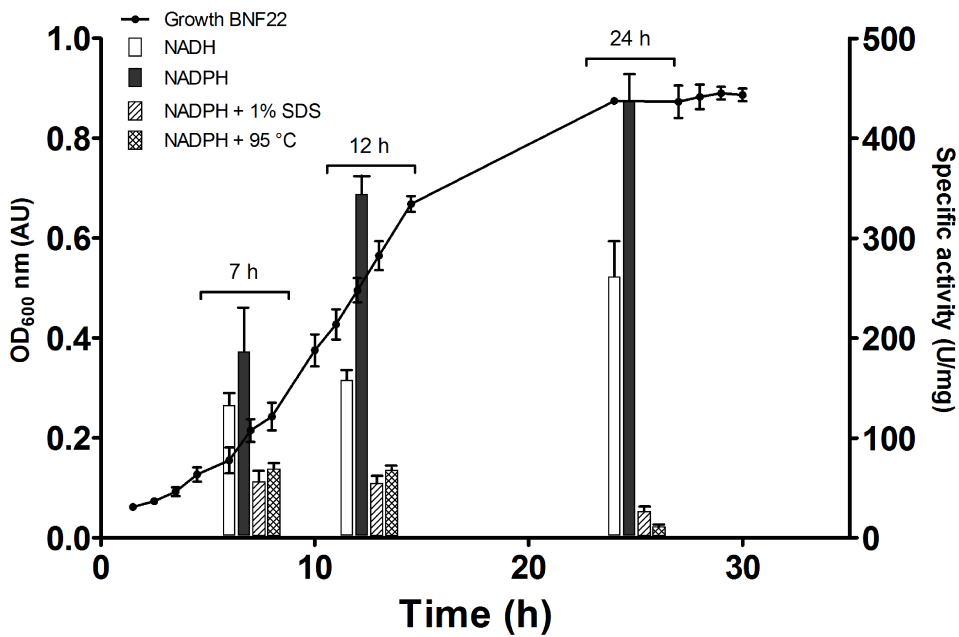


Fig. S2. TR activity along the growth curve of *Pseudomonas* sp. BNF22. TR activity was assessed in the presence of NADH or NADPH using crude extracts from cells grown for 7, 12, or 24 h. For clarity, TR activity after heating or SDS (1%) treatment are only displayed in presence of NADPH. Bars represent the average of three independent trials \pm SD.

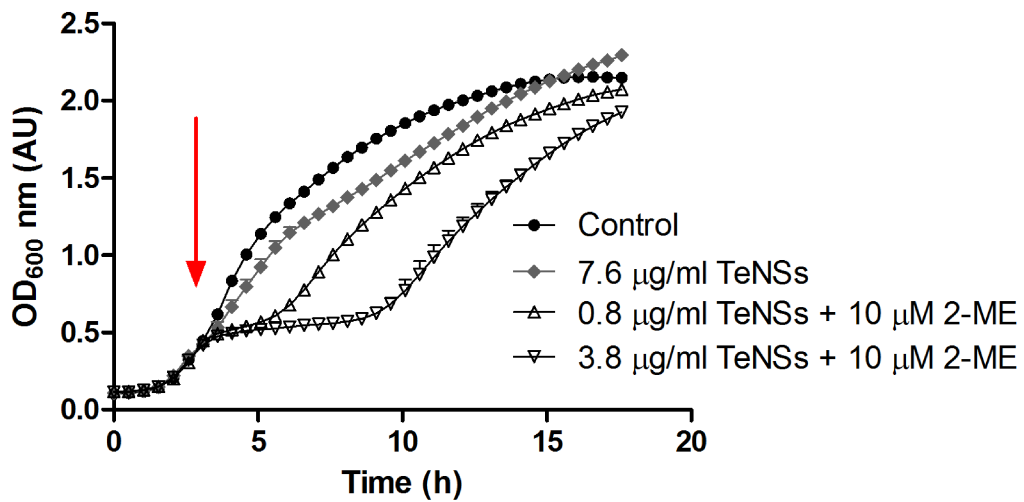


Fig. S3. Growth curve of *S. aureus* ATCC 6538 in the presence of TeNSs, or TeNSs in the presence of the indicated concentrations of 2-ME. The arrow shows the time of toxicant amendment (OD₆₀₀ ~0.4). The presence of 2-ME alone (10 µM) did not affect the growth curve of *S. aureus* (not shown for clarity).