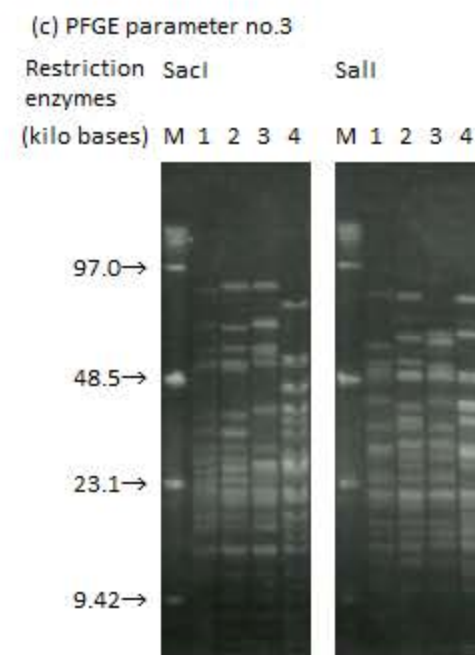
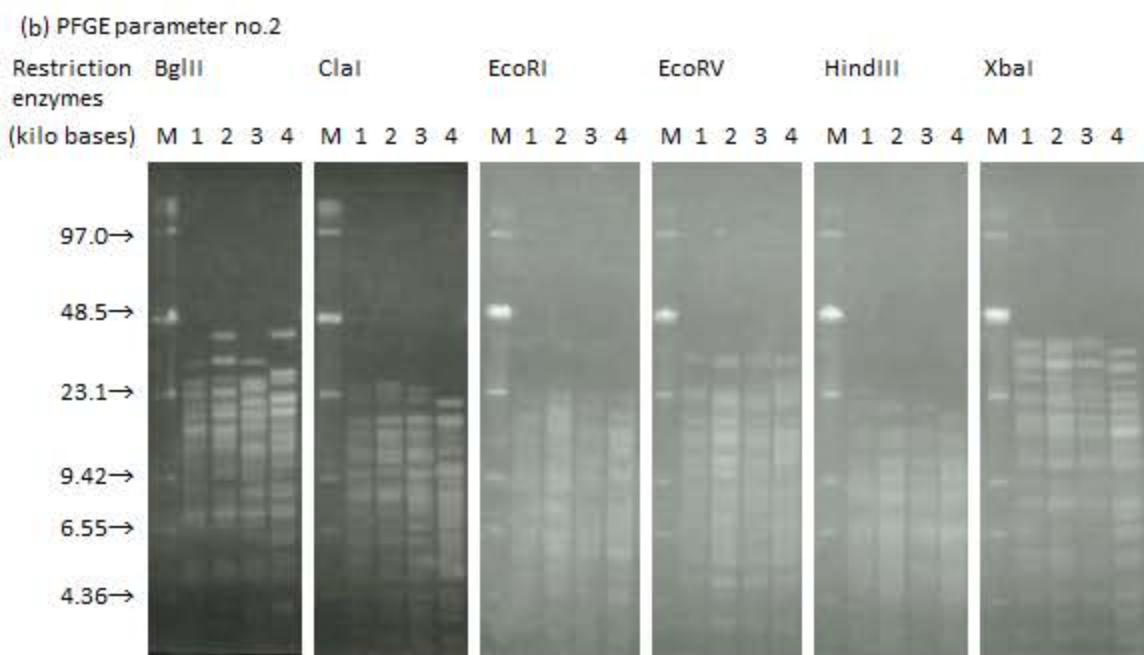
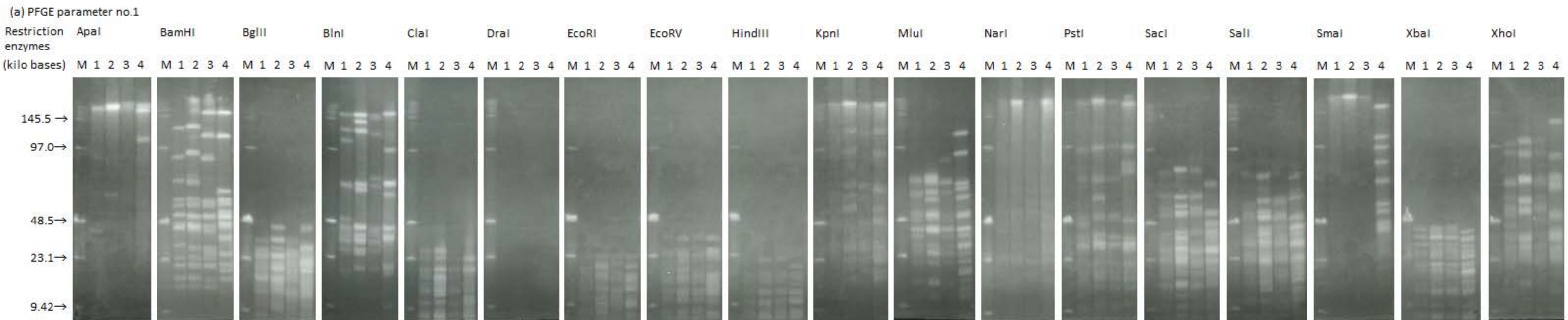


Supplemental Materials

Title: Molecular Epidemiology of Cases of *Mycoplasma californicum* Infection in Japan

Authors: Eiji Hata,^{a*} Kan-ichiro Suzuki,^{a,b} Hideki Hanyu,^{a,c} Megumi Itoh,^d Hidetoshi Higuchi,^e Hideki Kobayashi^f

Dairy Hygiene Research Division, National Institute of Animal Health (NIAH), National Agriculture and Food Research Organization (NARO), Sapporo, Hokkaido, Japan^a; Seibu Livestock Hygiene Service Center, Yoshinogawa, Tokushima, Japan^b; Abashiri Livestock Hygiene Service Center, Kitami, Hokkaido, Japan^c; Agriculture Research Department, Animal Research Center Hokkaido Research Organization, Shintoku, Hokkaido, Japan^d; School of Veterinary Medicine, Rakuno Gakuen University, Ebetsu, Hokkaido, Japan^e; Center for Animal Disease Control and Prevention, NIAH, NARO, Tsukuba, Ibaraki, Japan^f



Details of PFGE parameters

PFGE parameter	voltage (V/cm)	swiching time (sec)	electrophoresis time (h)	buffer temp. (°C)	buffer	gel concentration (%)
1	5.7	4-5	23.5	10	0.5 x TBE	1
2	5.7	1-5	17	10	0.5 x TBE	1
3	5.7	1-5	23	10	0.5 x TBE	1

Figure S1. Pulse patterns of *M. californicum* strains by various restriction enzymes.

M: Low Range PFG Marker (New England BioLabs®Inc.). Lane 1: *M. californicum* strain HAZ44_1. Lane 2: *M. californicum* strain HAZ175_1. Lane 3: *M. californicum* strain HAZ160_1. Lane 4: *M. californicum* strain ATCC 33461.

TABLE S1. Details of *M. californicum* strains used for the *in vivo* stability study.

Strain name	Case ^a	Farm ^a	Cow name	Year/Month/Day	Pulsotype ^a	MLVA profile ^a
HAZ 112_1	10	H	71	2008/Apr/9	C13	4-9-5-8
HAZ 125_1	10	H	71	2008/Apr/23	C13	4-9-5-8
HAZ 113_1	10	H	85	2008/Apr/9	C13	4-9-5-8
HAZ 126_1	10	H	85	2008/Apr/23	C13	4-9-5-8
HAZ 124_1	10	H	213	2008/Apr/9	C13	4-9-5-8
HAZ 131_1	10	H	213	2008/Apr/23	C13	4-9-5-8
HAZ 118_1	10	H	114	2008/Apr/9	C13	4-9-5-8
HAZ 118_1	10	H	114	2008/Apr/23	C14	4-9-5-8
HAZ 26_1	6	F	1267	2007/Aug/13	A14	6-6-5-9
HAZ 506	6	F	1267	2007/Sep/7	A14	6-6-5-9
HAZ 28_1	6	F	1457	2007/Aug/13	A8	6-6-5-9
HAZ 510	6	F	1457	2007/Sep/7	A6	6-6-5-9
HAZ 511	6	F	1457	2007/Sep/7	A14	6-6-5-9
HAZ 513	6	F	1457	2007/Sep/7	A11	6-6-5-9

^aThe cases and Farms correspond to those shown in Table 1. The MLVA profiles and pulsotypes correspond to those shown in Fig. 2.

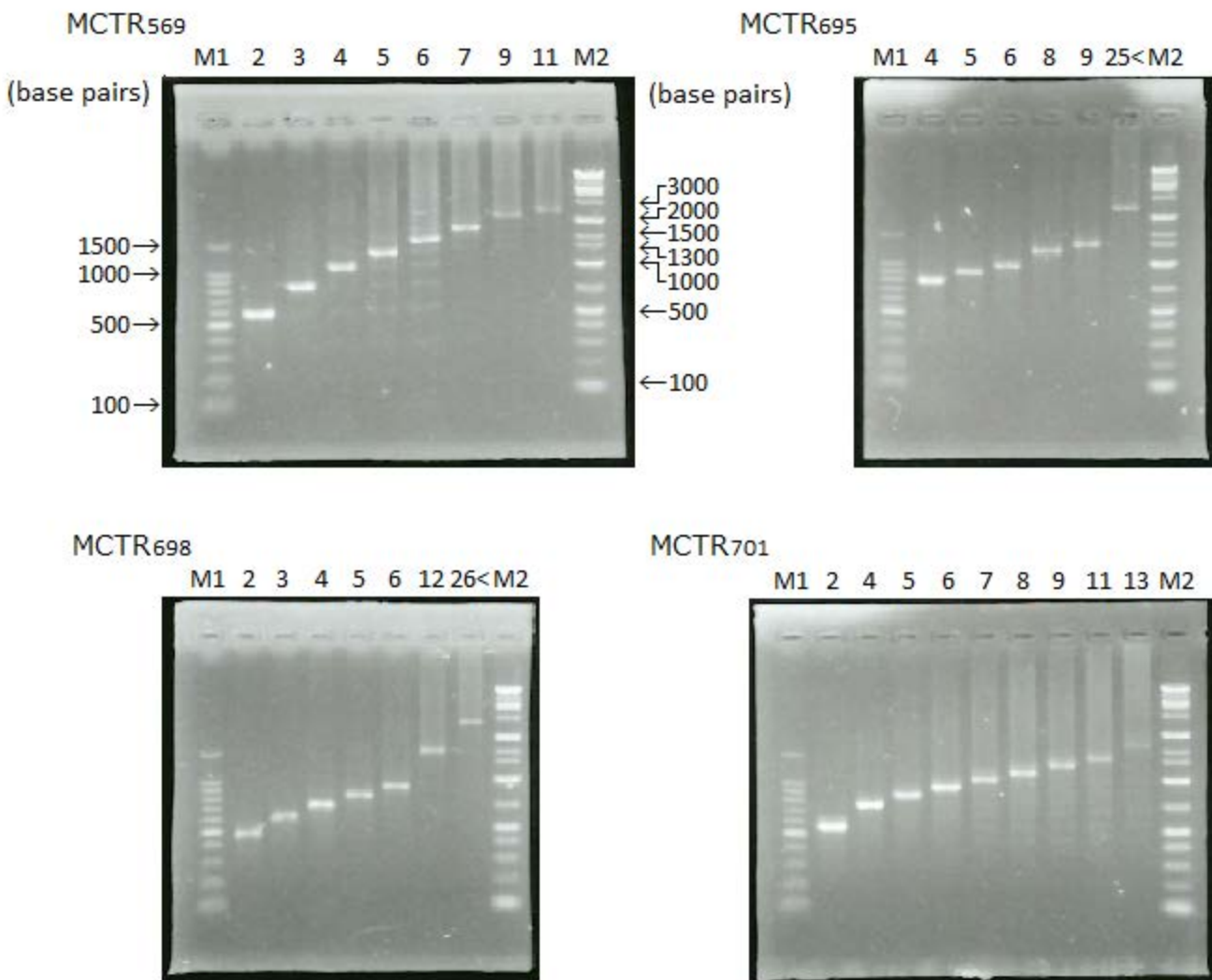


Figure S2. Agarose gel electrophoresis of VNTR amplicons in the present study (2% [w/v] agarose, 0.5 x TBE buffer). The numbers above the lanes show the number of repeat units. M1: 100-bp DNA ladder (Toyobo, Osaka, Japan), M2: Gene ladder wide 1 (Wako).