

Supplemental material

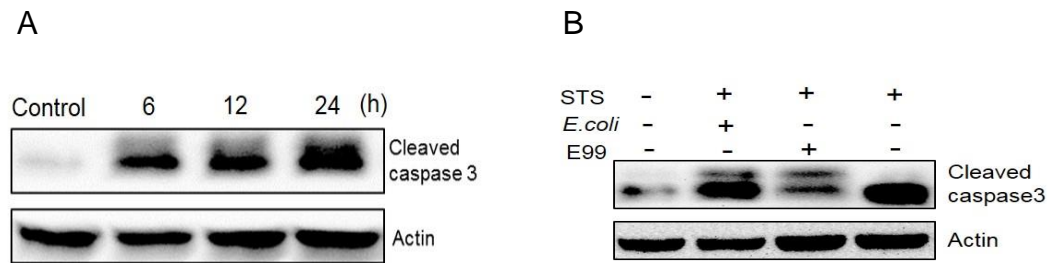


Figure S1. Effects of *E. coli* infection on caspase 3 processing. RAW264.7 cells infected with *E. coli* DH5 α for 1 h at a multiplicity of infection (MOI) of 10 or without infection (Control), were washed thrice with PBS and further incubated with DMEM plus 10% FBS containing vancomycin (16 μ g/mL) and gentamicin (150 μ g/mL) to kill all extracellular bacteria. (A) The cells at different time points were processed for Western blot analysis using antibodies to cleaved caspase 3. (B) Cells at 12 h post infection were treated with STS for 5 h before being lysed for Western blot analysis using antibodies to cleaved caspase 3.