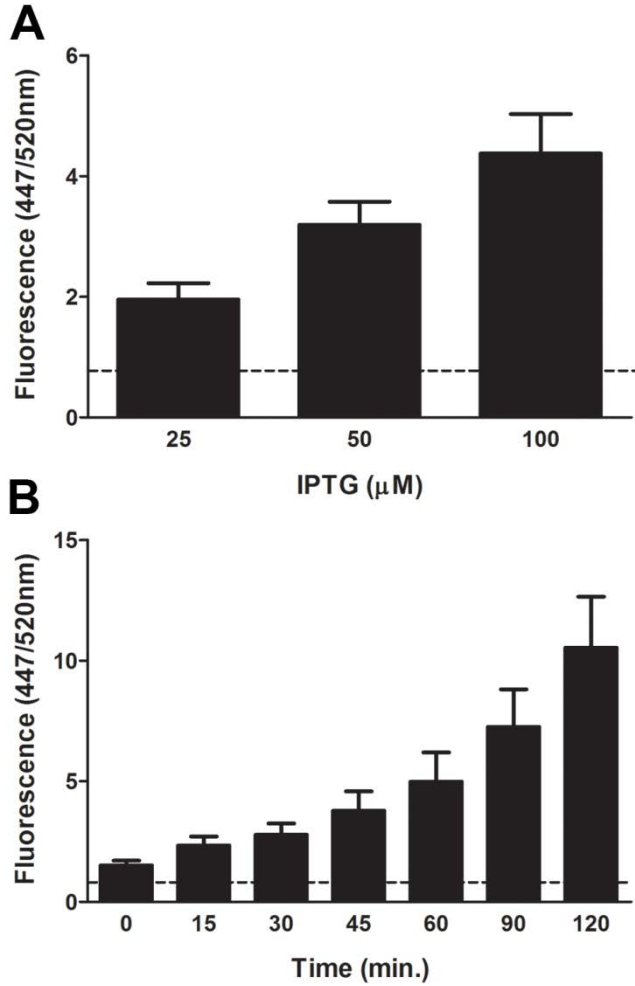


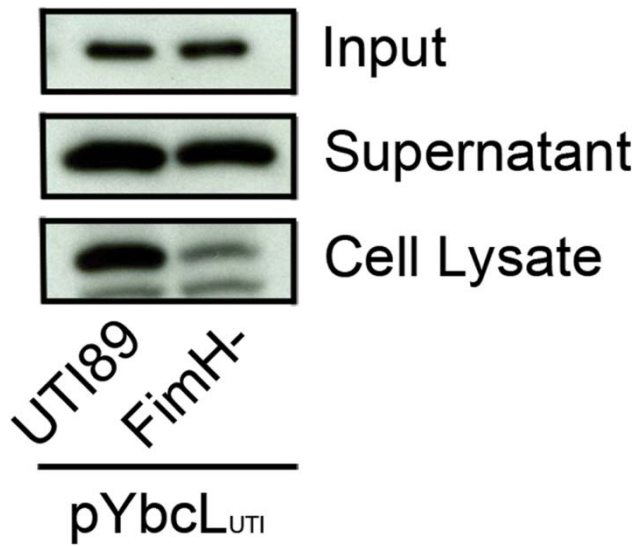
## SUPPLEMENTAL MATERIAL

**Table S1: Primers used in this study**

Primer	Sequence (5' → 3')
JLP253	CACTTCTAGAATGAAGAACTGGAAAACGCTGC
JLP254	GCTCAAGCTTTTACGCATAATCCGGAACATCATACGGATAGTTGCTCAGGATTTTAACG
MEL173	ATCAAATAAAATAACGATAGGTCA
MEL174	CATGATGTTTATGCATCCGTA
MEL243	GCATGGATCCGTGAAAAAGTGGTTATTAGCTGCAG
MEL244	CGATTCTAGATTACTTGTGCATCGTCGTCCTTGTAGTCTTTAACCTGTTTCAGTACGTCGG
MEL245	GCATACTAGTGGATCTAGGTGAAGATCCTTTTTGATAATCTC
MEL246	GCATTTAATTAACGCAAAAAGGCCATCCGTCAG
MEL247	GCATTTAATTAAGTG TAGGCTGGAGCTGCTTC
MEL248	GCATACTAGTCATATGAATATCCTCCTTAG
MEL253	GCATGAGCTCGGTCACAACAATGAGGTTTTTATG
MEL275	GCATGCGGCCGCTTTATCTCATAAACTGGTGTTATCTCAGCGG
MEL278	GCATGCGGCCGCGCACCCAGAAACGCTGGTGA
MEL284	GCATGGATCCTTACTTGTGCATCGTCGTCCTTGTAGTCCCAATGCTTAATCAGTGA
MEL296	GCCTTGTGCAGGACACGCTGAGAACGAACAATACGGCGCTGTGTAGGCTGGAGCTGCTTC
MEL297	GTCGATTCGCAGCTGTTGCTCCTGGCGGTAGCGGGTGTATCATATGAATATCCTCCTTAG
MEL300	GGTGTTGCAGGTGCTGGCTGAACAGGAGAAGTTGAACCTGGTGTAGGCTGGAGCTGCTTC
MEL301	GGGCGTGACTTCCATCCCCAGGACGGCCTCTTTAAATCCCATATGAAT ATCCTCCTTAG



**Figure S1: Release of YbcL<sub>UTI</sub> from the periplasm is dose- and time-dependent.** Experiments were conducted and data are represented as described for Fig. 4. During infection of 5637 cells, the level of  $\beta$ -lactamase activity in the supernatant positively correlated with the level of IPTG induction (A) and the duration of infection (B).



**Figure S2: Type 1 pili augment release of YbcL<sub>UTI</sub> from the periplasm.** Experiments were conducted and data are presented as described for Fig. 3. Compared to infection with UTI89/pYbcL<sub>UTI</sub>, less YbcL<sub>UTI</sub> was detected in the supernatant and 5637 cell lysate when a type 1 pilus mutant (UTI89/pYbcL<sub>UTI</sub>*fimH::kan*) was used as the bacterial inoculum.