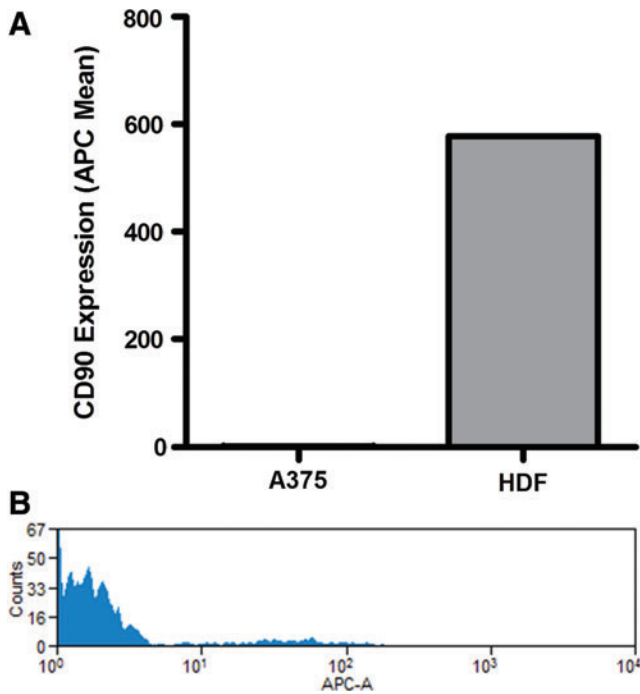


Supplementary Data



SUPPLEMENTARY FIG. S1. (A) A375 human melanoma cells transfected with a firefly luciferase (A375 Luc705) or human dermal fibroblast (HDF) cells grown in monolayer culture were trypsinized and stained with cluster of differentiation 90-allophycocyanin antibody (CD90-APC) prior to being measured by flow cytometry. Cellular fluorescence is depicted as mean relative fluorescent units normalized to untreated controls. (B) Representative flow cytometry histogram of complex spheroids dispersed and stained with CD90-APC. The lower fluorescent peak depicts A375 cells while the higher, broader fluorescent peak depicts HDF cells.