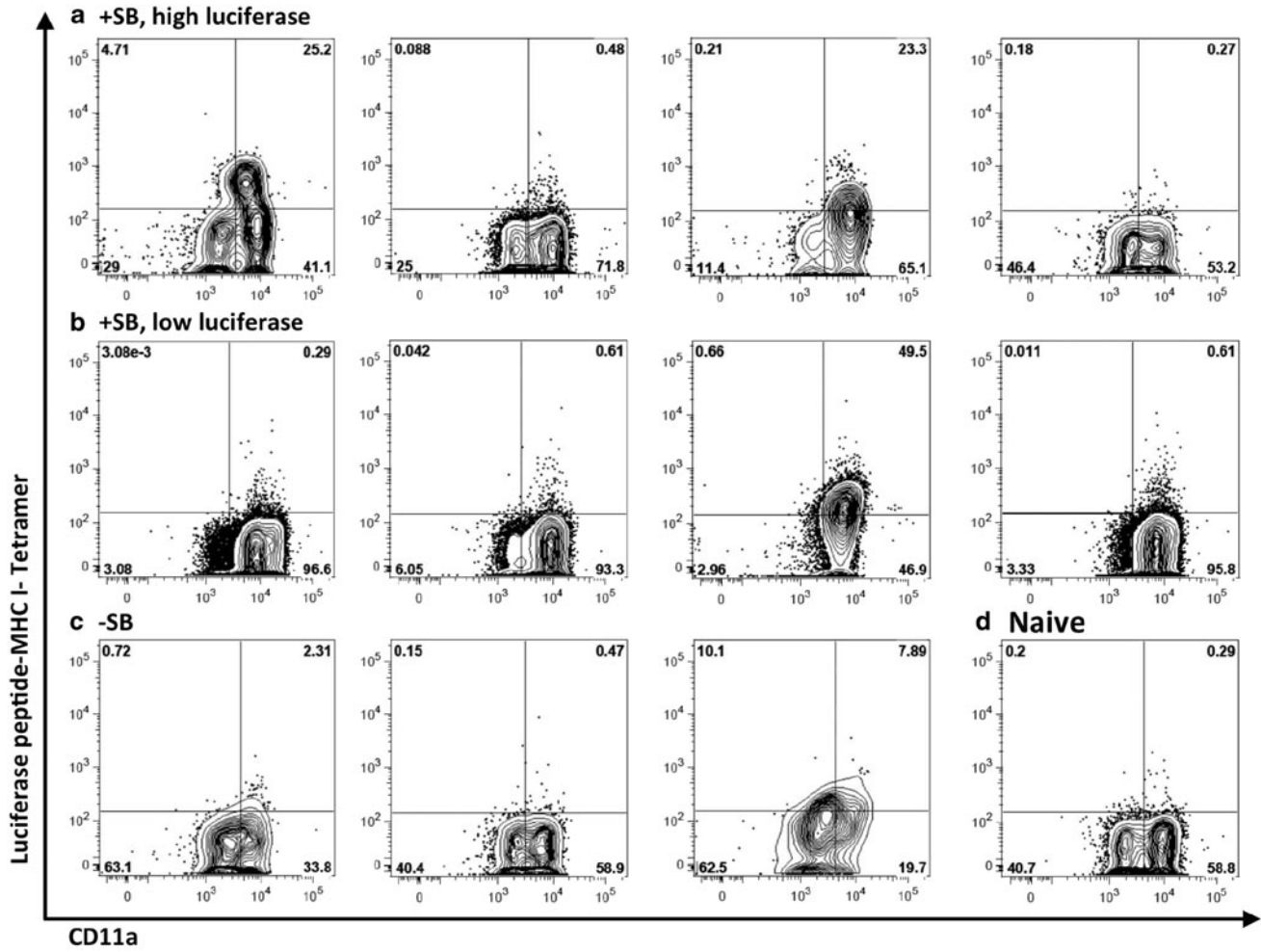


Supplementary Data



SUPPLEMENTARY FIG. S1. Flow analysis of MHC I-luciferase peptide tetramer binding of CD8+ CD11a+ T cells. Liver lymphocytes were prepared and stained with anti-CD8 α , anti-CD11a, and luciferase peptide-MHC I tetramer from test animals in Fig. 4. CD8+ T cells from individual mice in groups treated with SB100X maintaining a high level of luciferase expression (**a**), treated with SB100X exhibiting a low level of luciferase expression (**b**), animals not treated with SB100X (**c**), and an untreated mouse (**d**), plotted for MHC I-luciferase peptide tetramer binding versus CD11a.