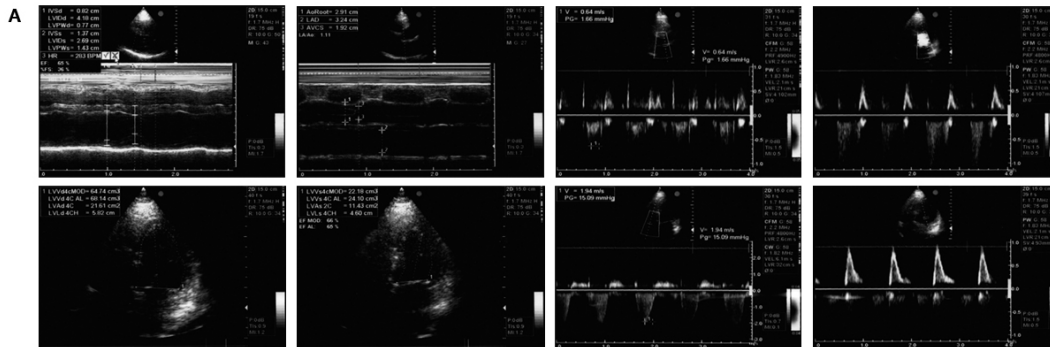
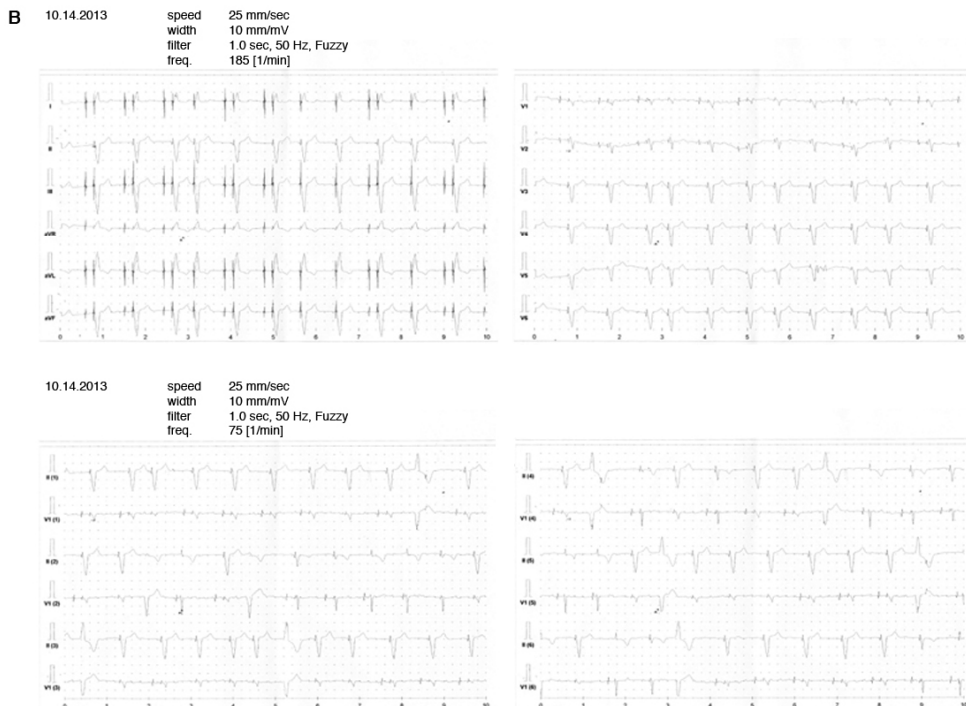


## ADDITIONAL FIGURE



exam		value
Interventricular septal end diastolic dimension	IVSd	0,99 cm
Left Ventricle Internal diastolic Dimension	LVIDd	4,51 cm
Left Ventricle Posterior Wall diastolic Dimension	LVPWd	1,04 cm
Interventricular septal end systolic dimension	IVSs	1,43 cm
Left Ventricle Internal systolic Dimension	LVIDs	2,86 cm
Left Ventricle Posterior Wall systolic Dimension	LVPWs	1,59 cm
Heart rate	HR	51 bpm
Eject fraction	EV	67%
Fractional shortening	FS	37%
Aortic root diameter	AoRoot	2,91 cm
Left atrial dimension	LAD	3,40 cm
Left atrial/aortic root dimension ratio	LA/Ao	1,11
Left Ventricular Volume in Diastole MOD	LVVd MOD	64,73 cm <sup>3</sup>
Left Ventricular Volume in Diastole AL	LVVd AL	68,14 cm <sup>3</sup>
Left Ventricular Area in Diastole	LVA <sub>d</sub>	21,61 cm <sup>2</sup>



**Additional Figure. Cardiac assessment of the Proband.** Recent echocardiography (A) and electrocardiography (B) of the proband, demonstrating the absence of dilated cardiomyopathy in the subject.