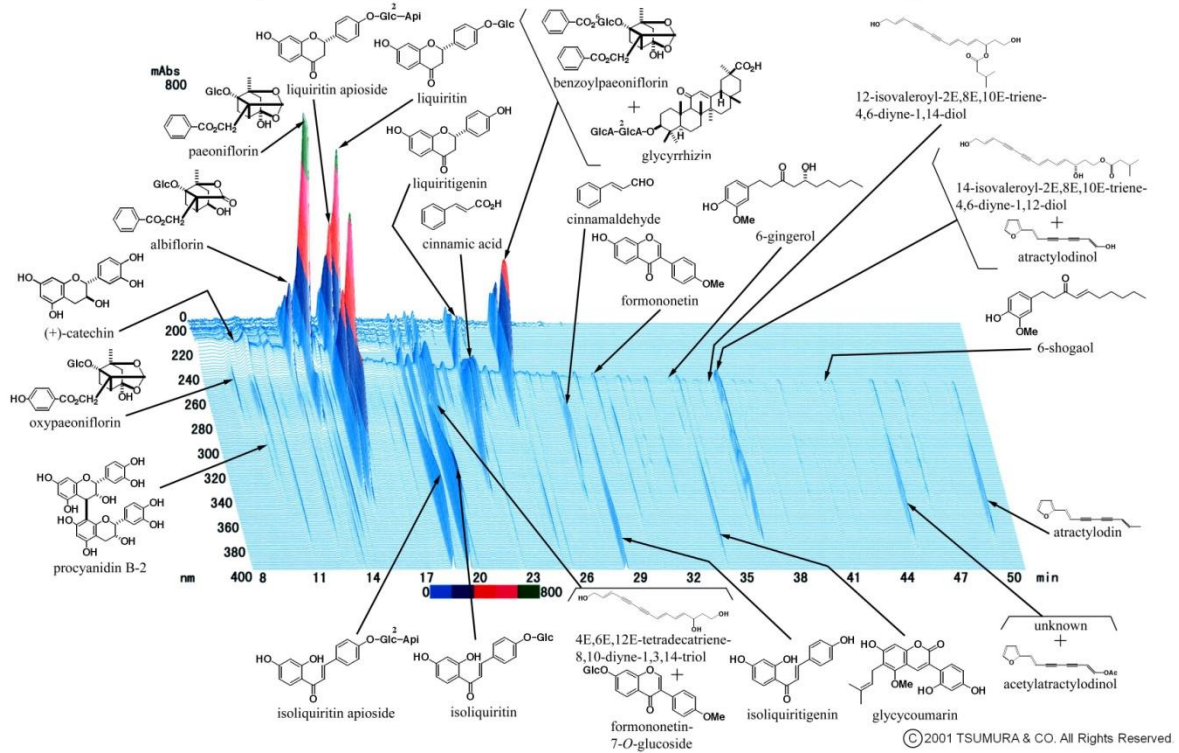
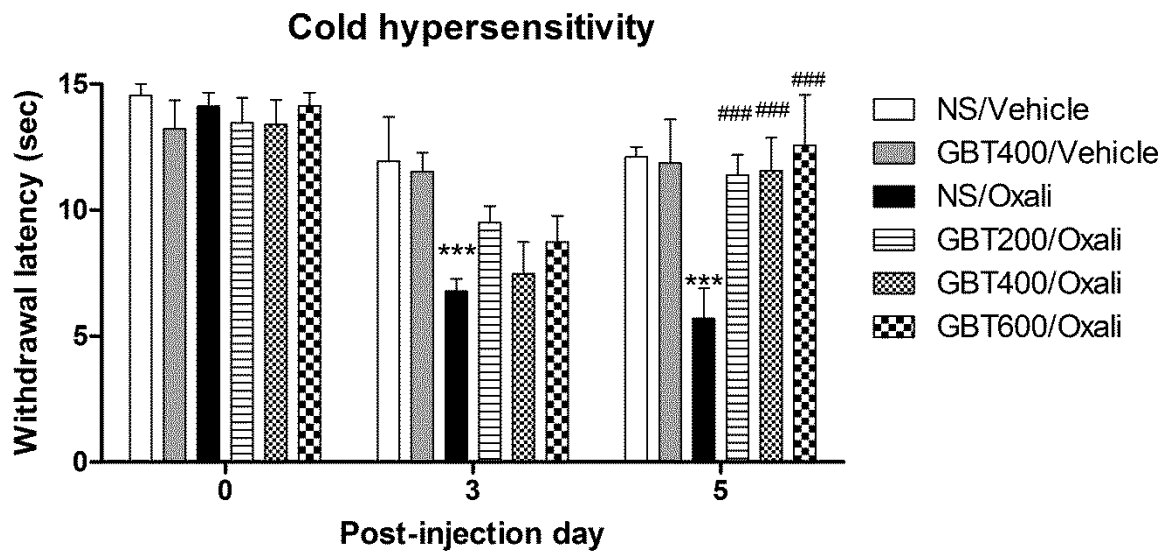


TJ-18 桂枝加朮附湯 3D HPLC Pattern



Supplementary Figure 1. Three-dimensional HPLC profile of GBT. This profile was provided by Tsumura & Co., Tokyo, Japan.



Supplementary Figure 2. Effects of GBT on oxaliplatin-induced cold hypersensitivity that was tested before GBT administration. The average tail withdrawal latency in response to cold stimuli prior to (left), and 3 days (middle) and 5 days (right) after an oxaliplatin (6 mg/kg, i.p.) injection. Data are presented as mean \pm S.E.M. *** p <0.001 vs. NS/Vehicle; ### p <0.001 vs. NS/Oxali by one-way ANOVA followed by Dunnett's post hoc test.