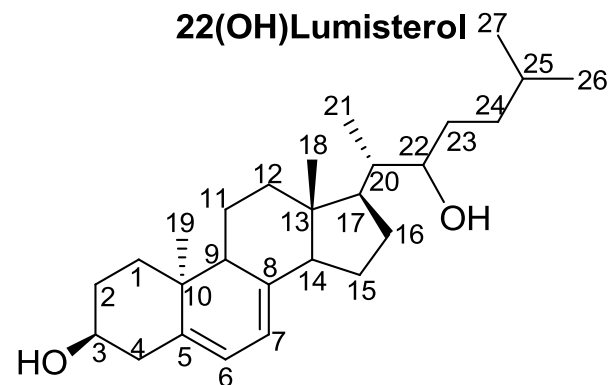
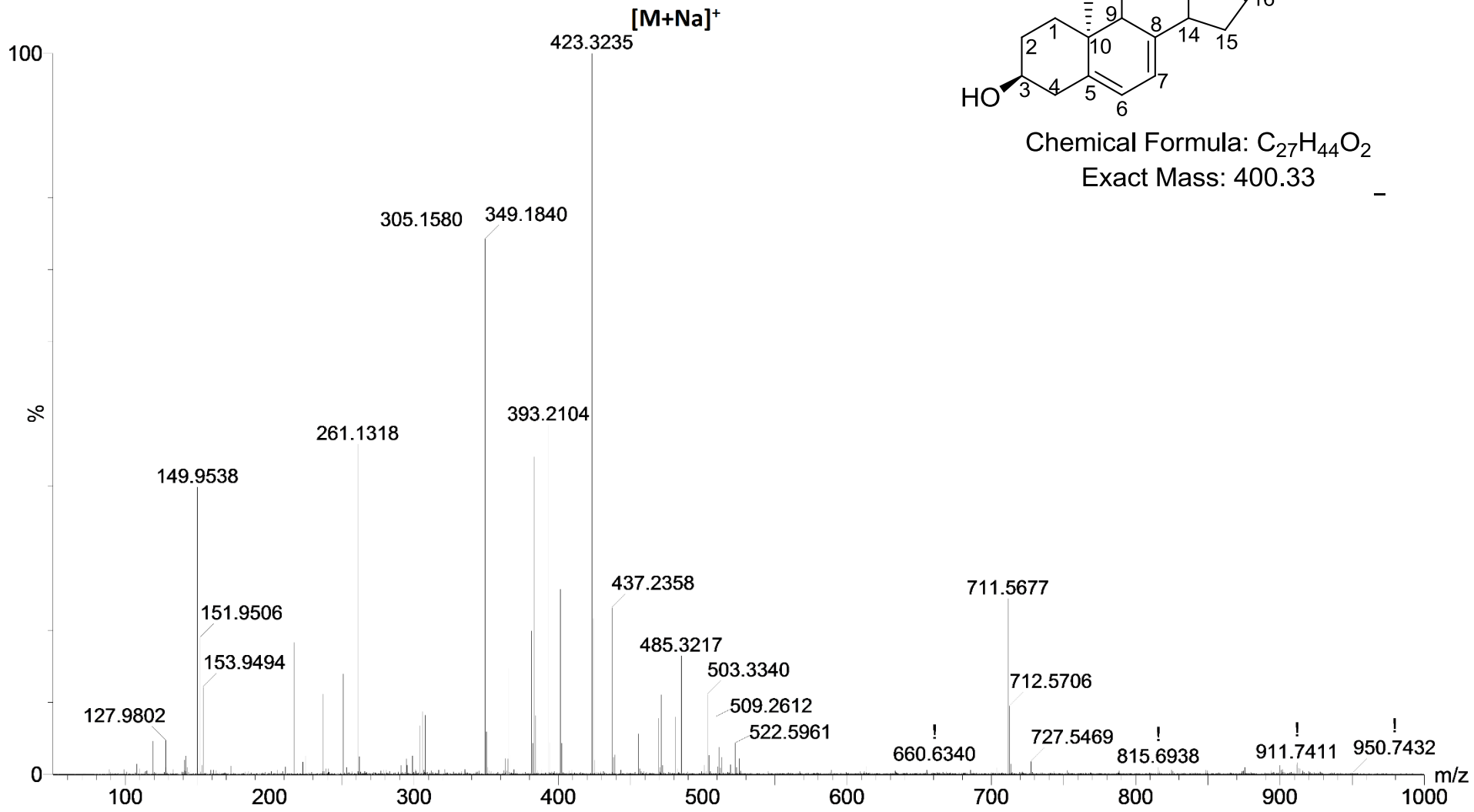


Product C: 22(OH)Lumisterol

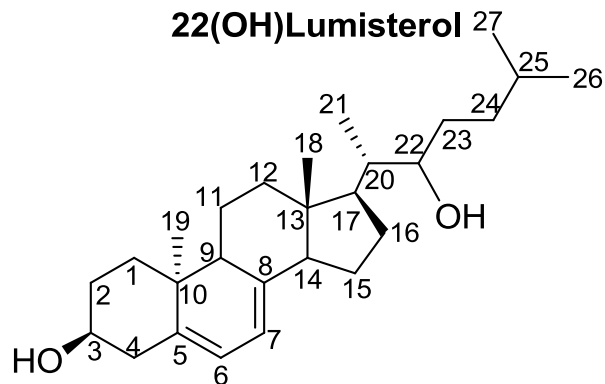
Mass spectrum



Chemical Formula: $C_{27}H_{44}O_2$

Exact Mass: 400.33

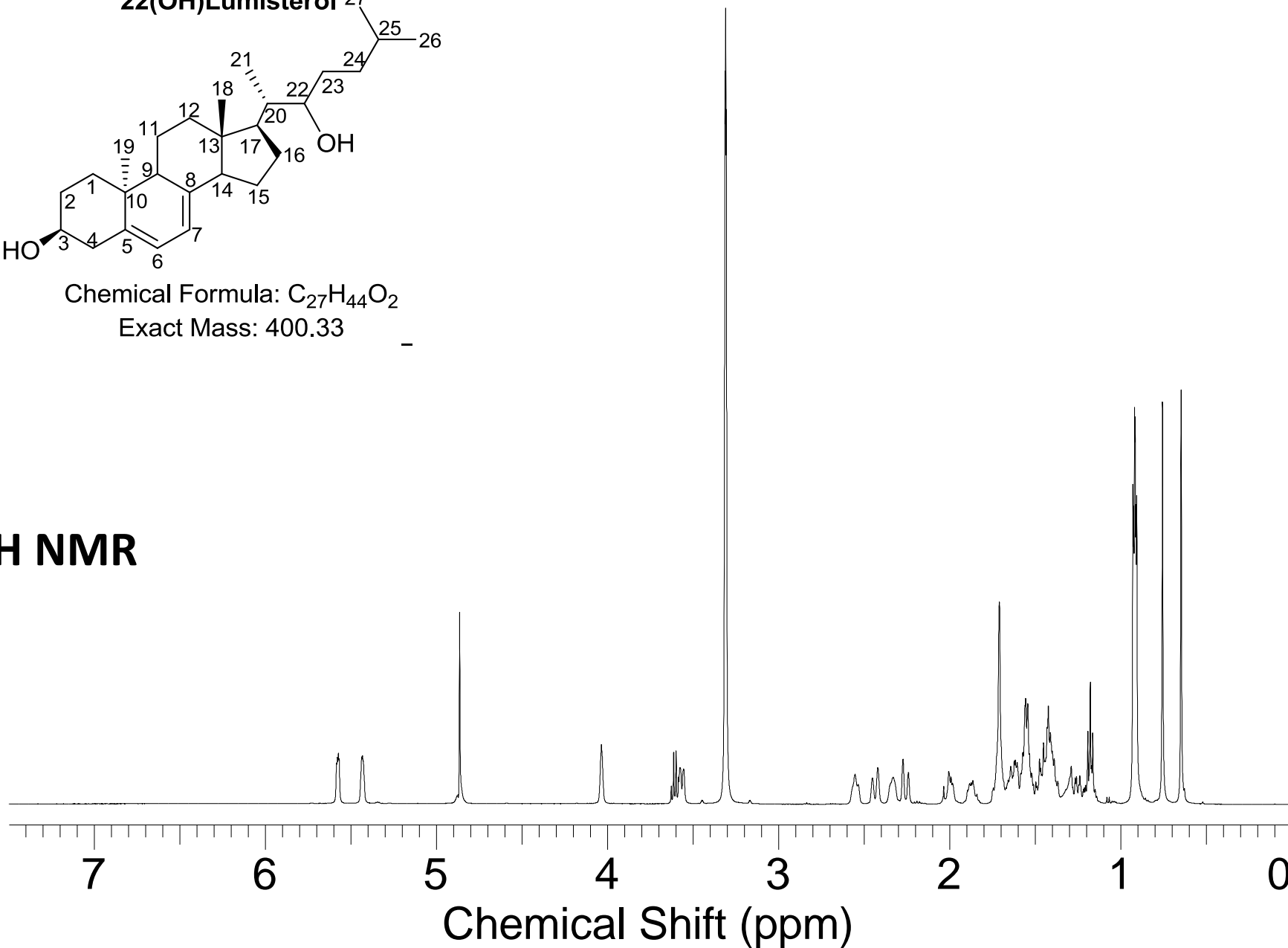
22(OH)Lumisterol



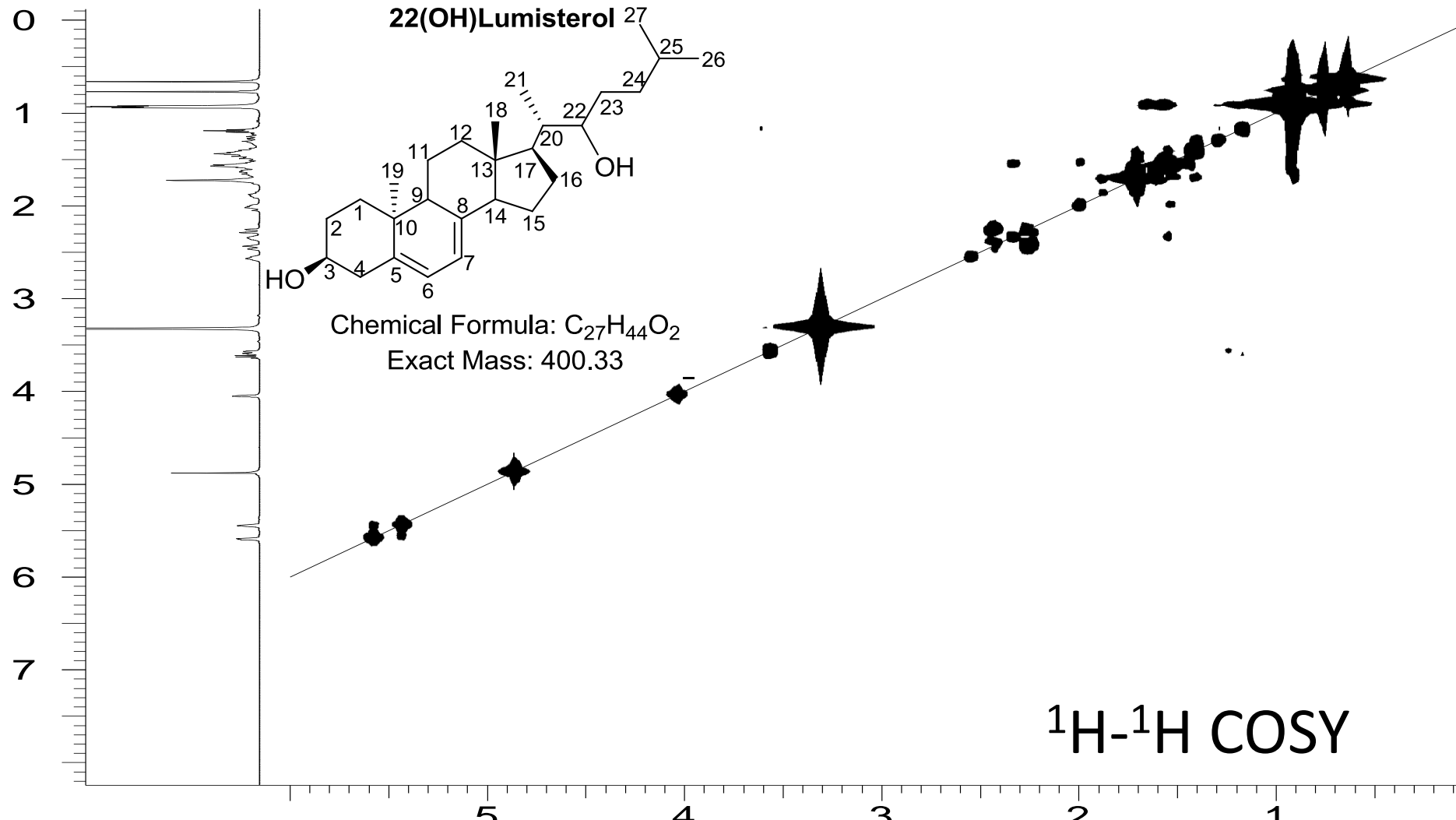
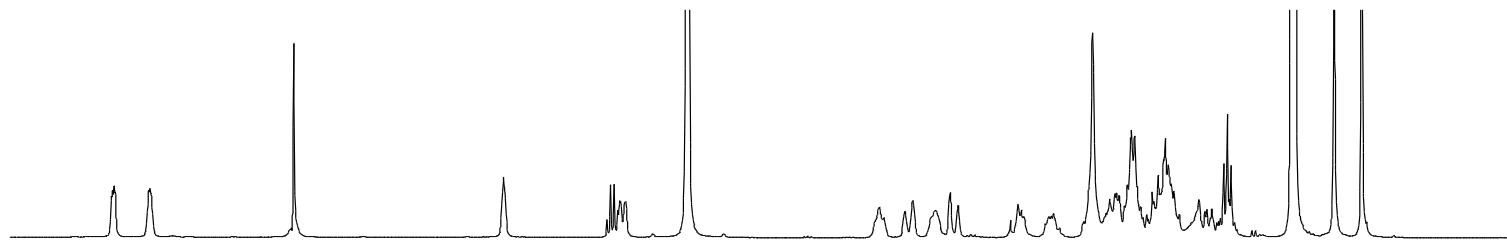
Chemical Formula: $C_{27}H_{44}O_2$

Exact Mass: 400.33

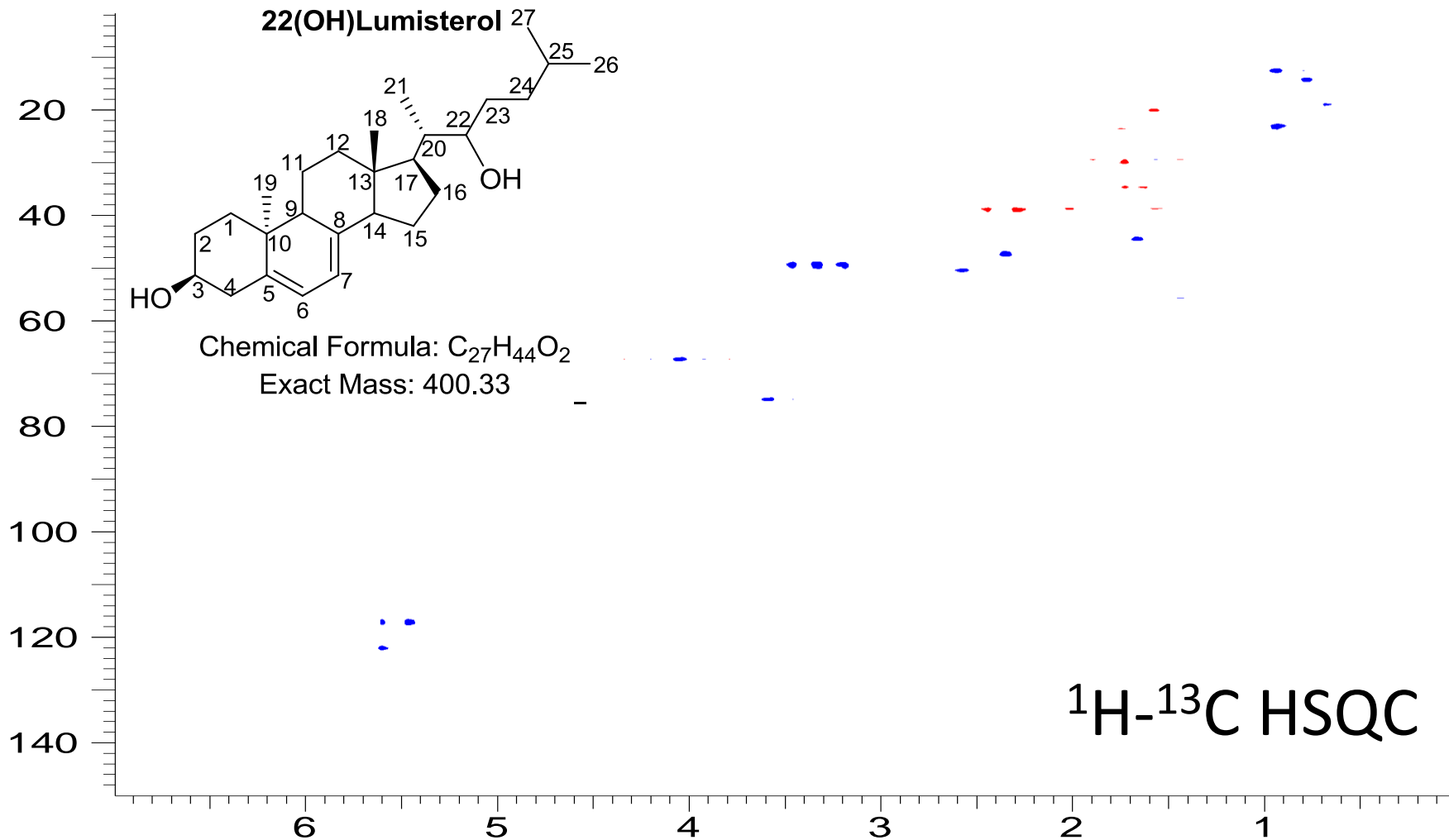
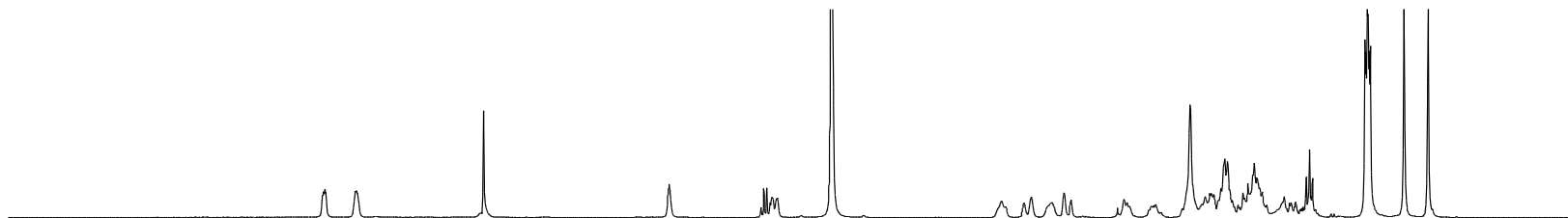
1H NMR



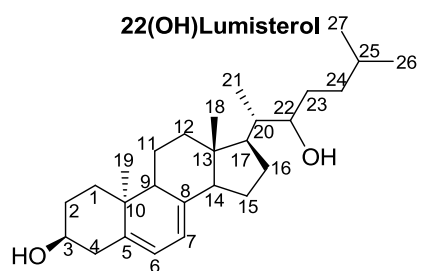
22(OH)Lumisterol



22(OH)Lumisterol

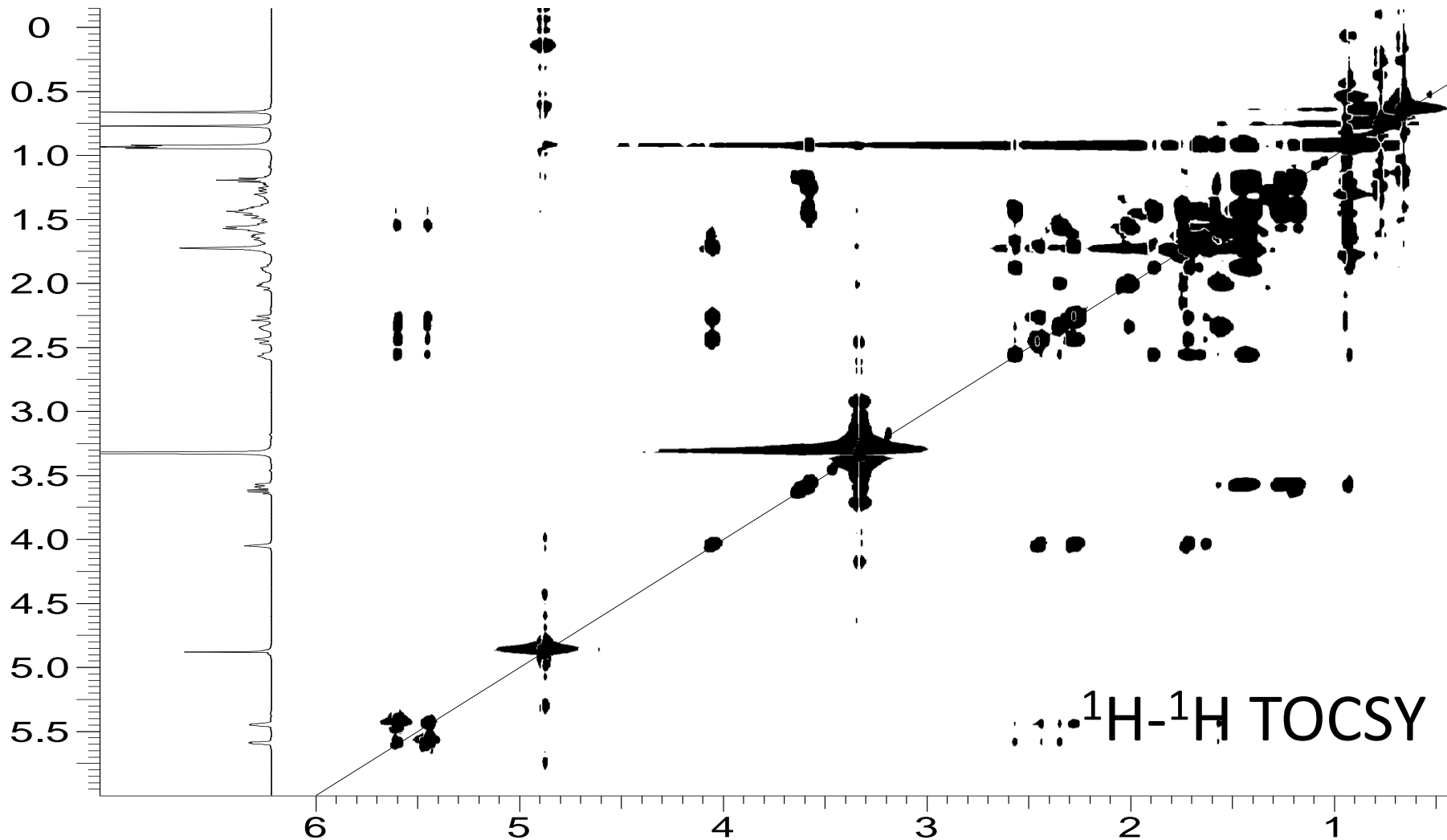
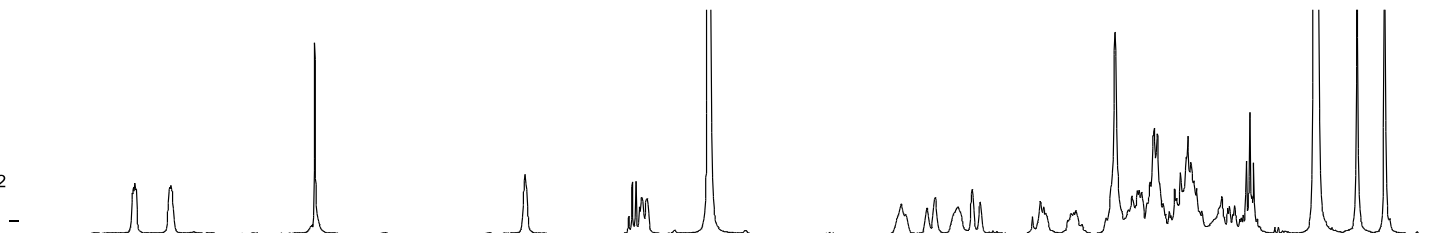


22(OH)Lumisterol

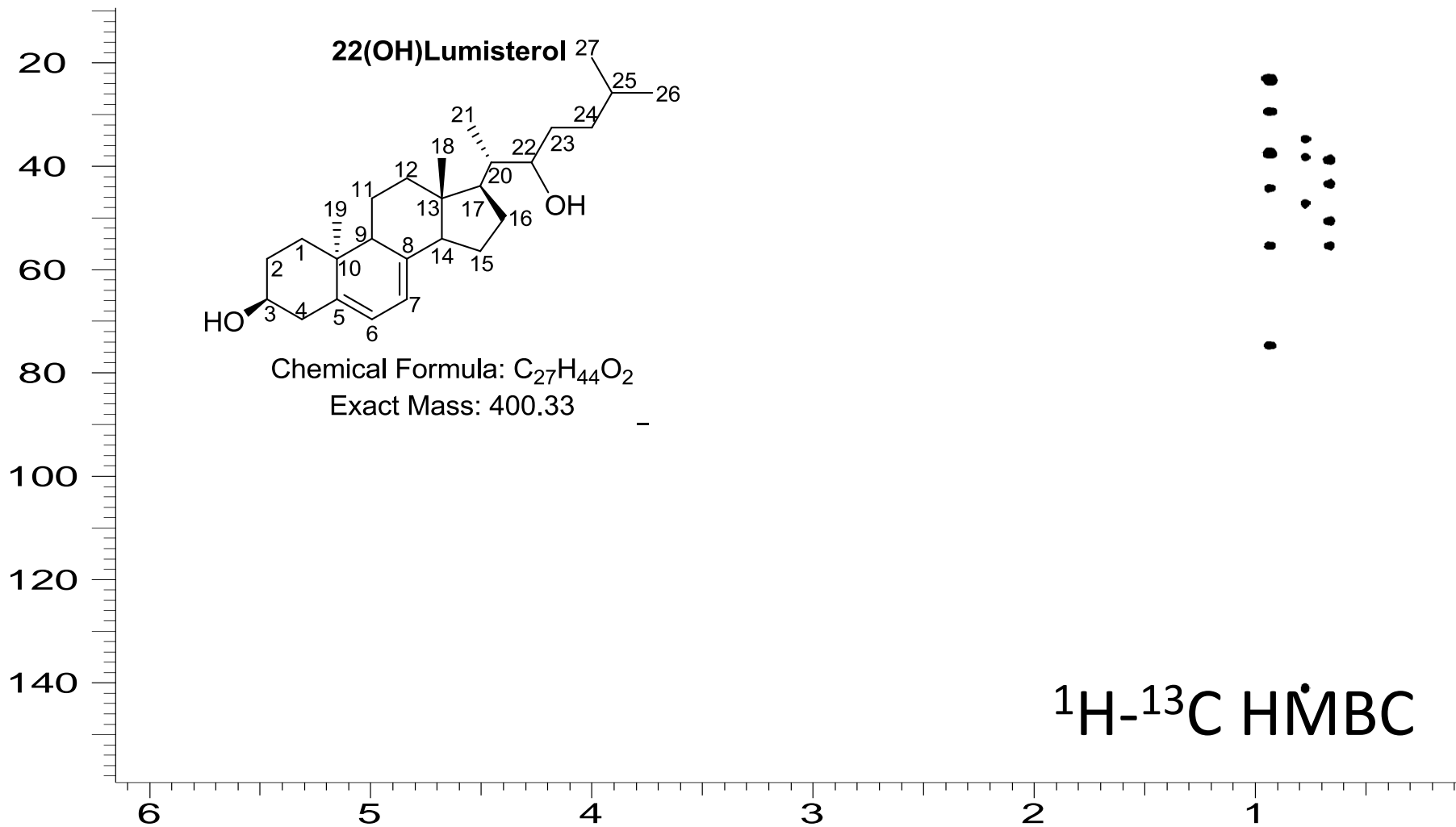
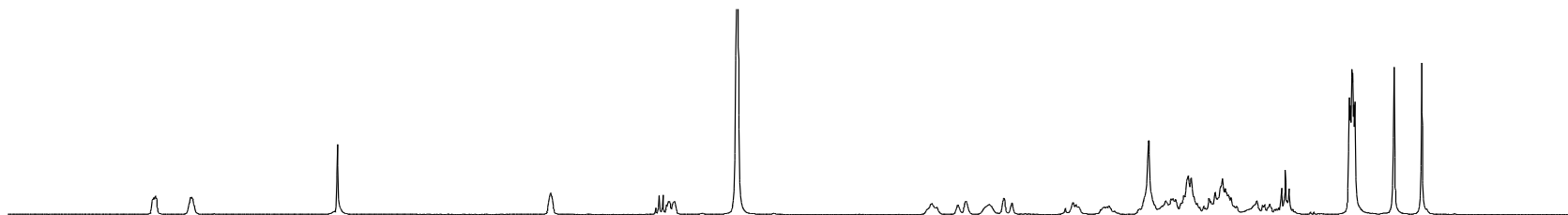


Chemical Formula: $C_{27}H_{44}O_2$

Exact Mass: 400.33

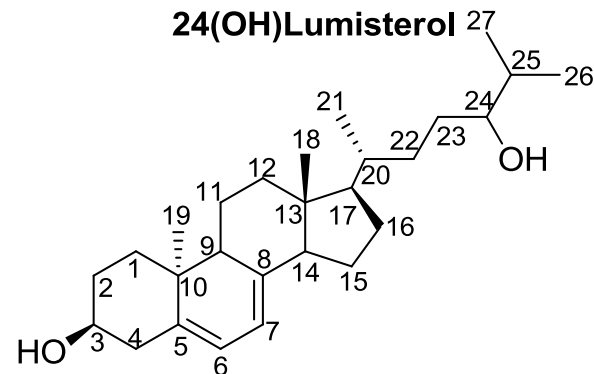
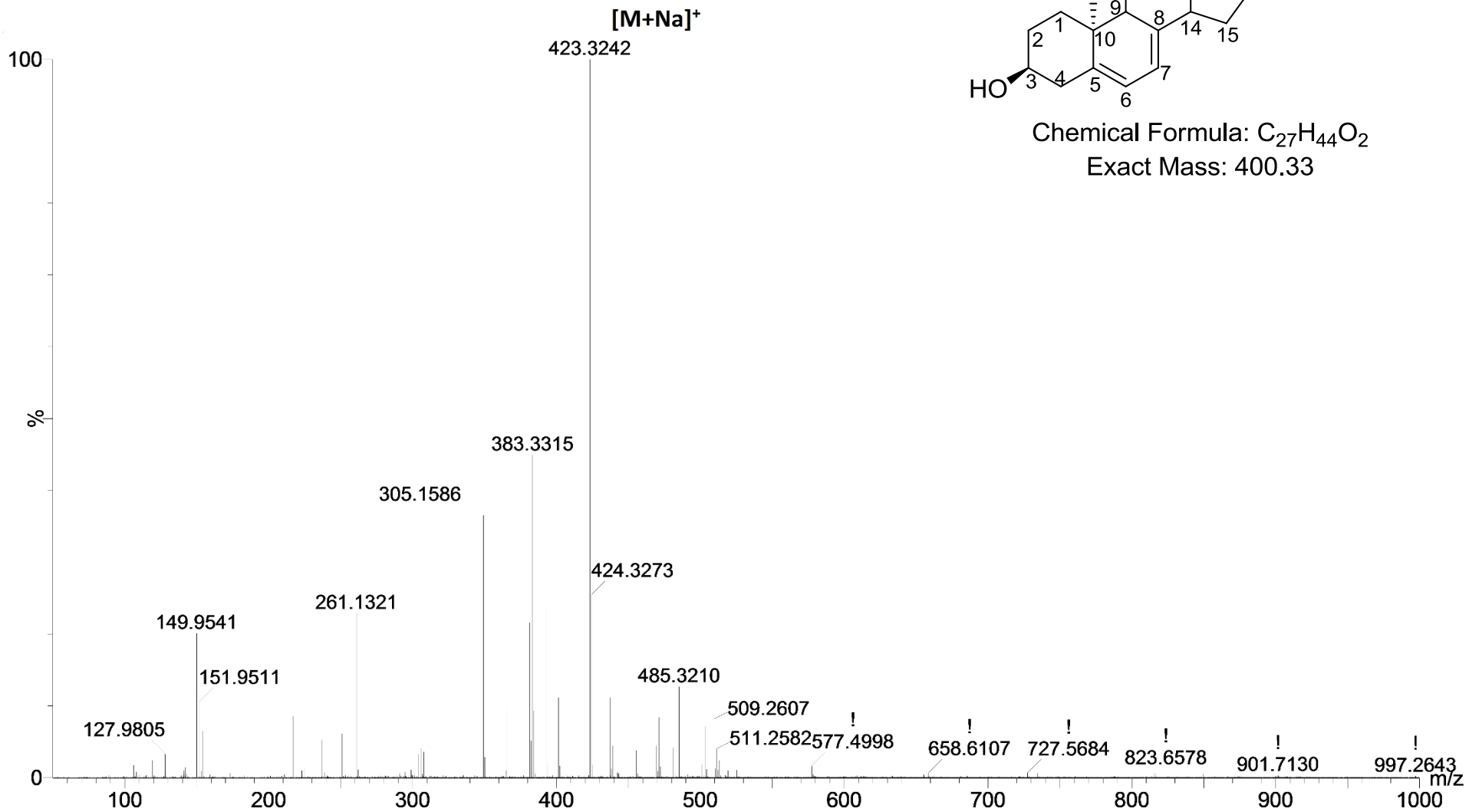


22(OH)Lumisterol



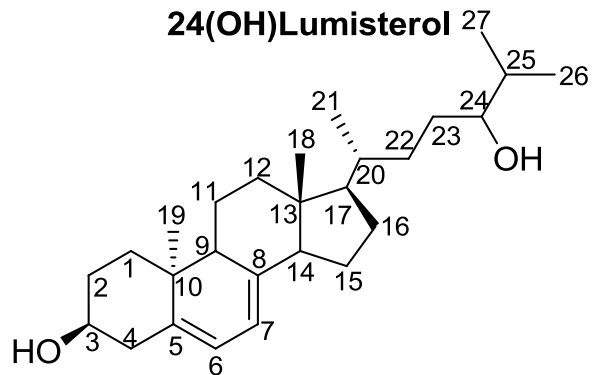
Product B: 24(OH)Lumisterol

Mass spectrum

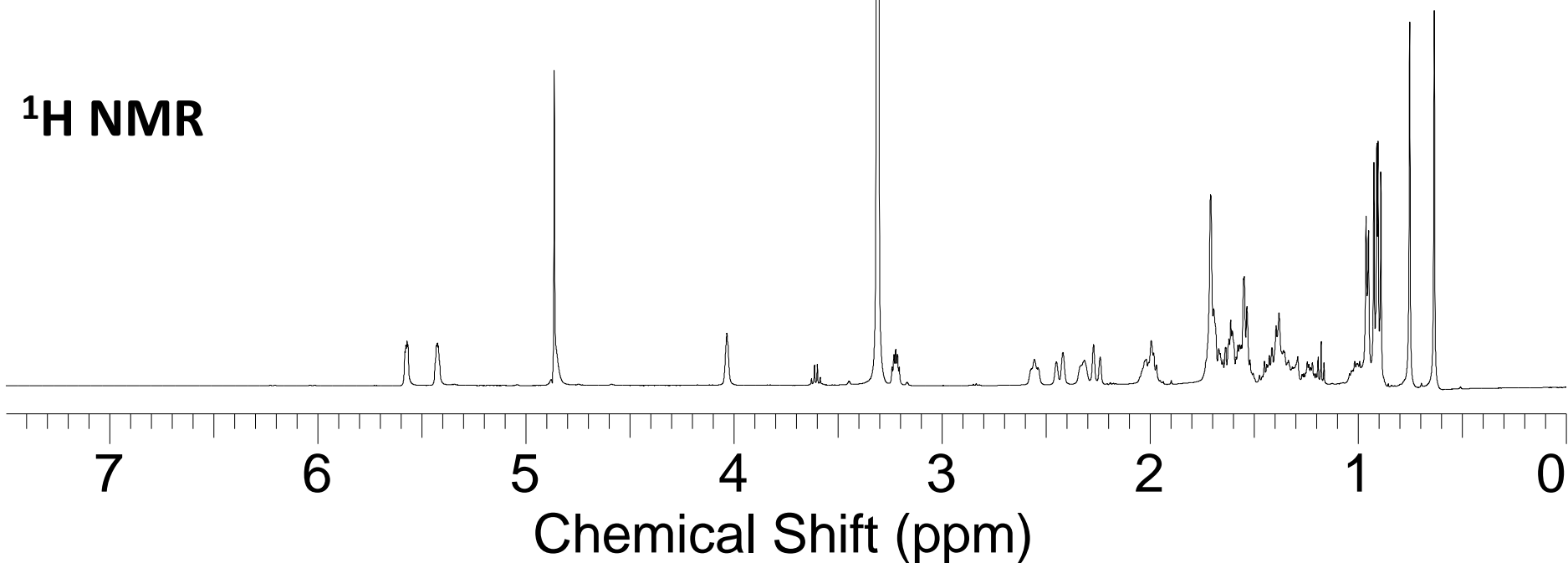


Chemical Formula: $C_{27}H_{44}O_2$
Exact Mass: 400.33

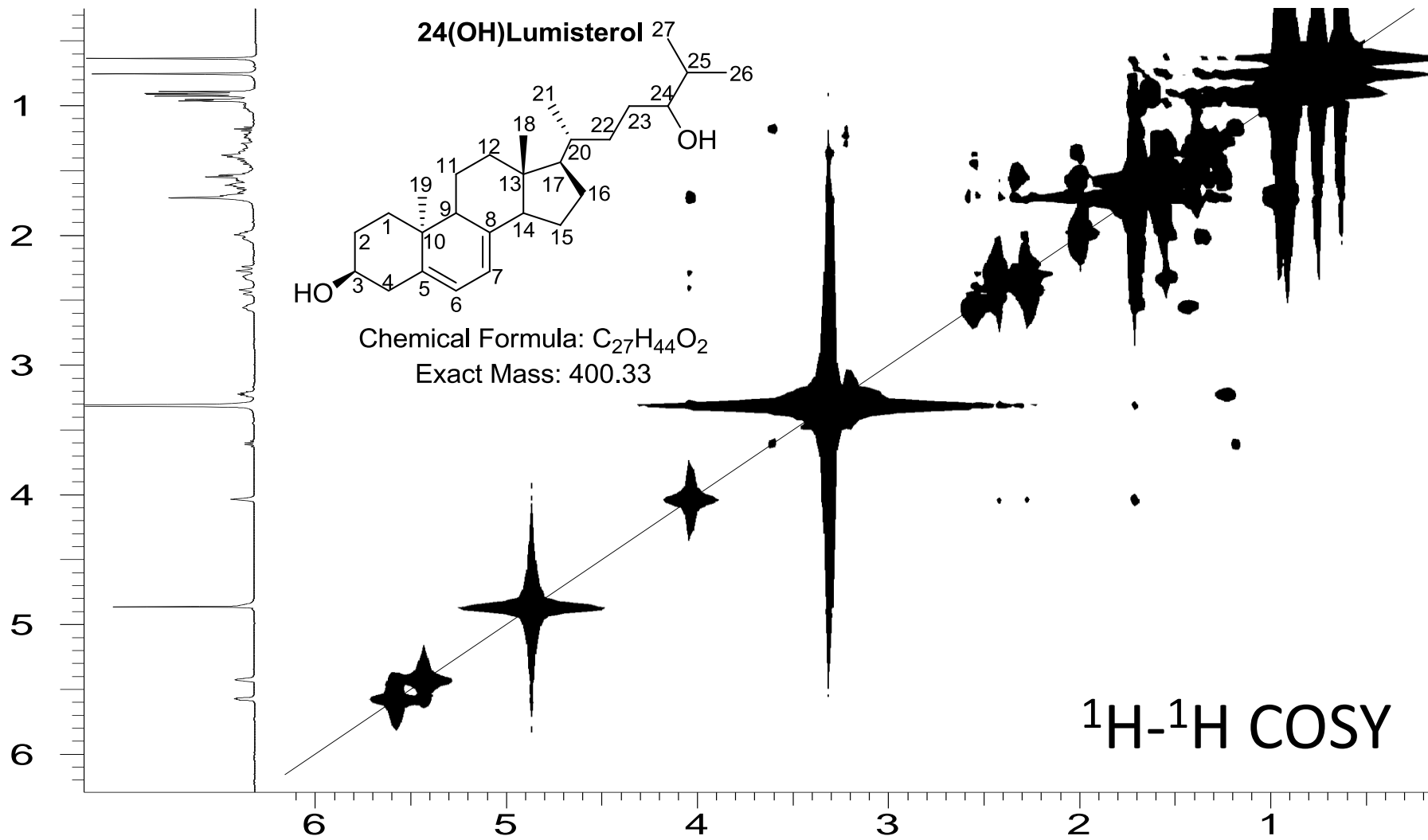
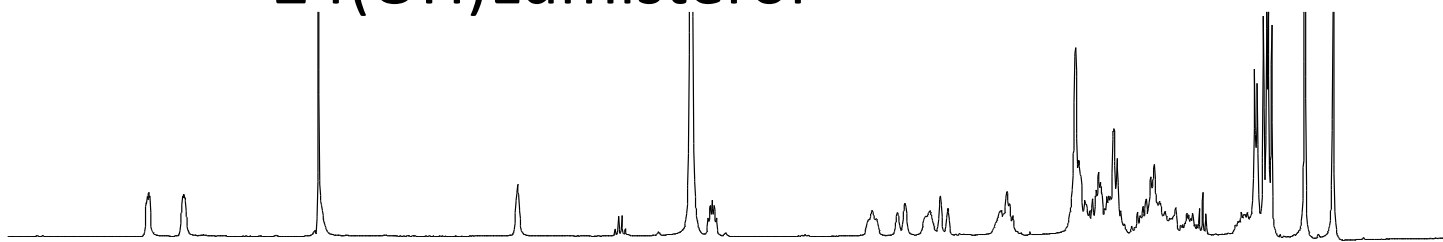
24(OH)Lumisterol



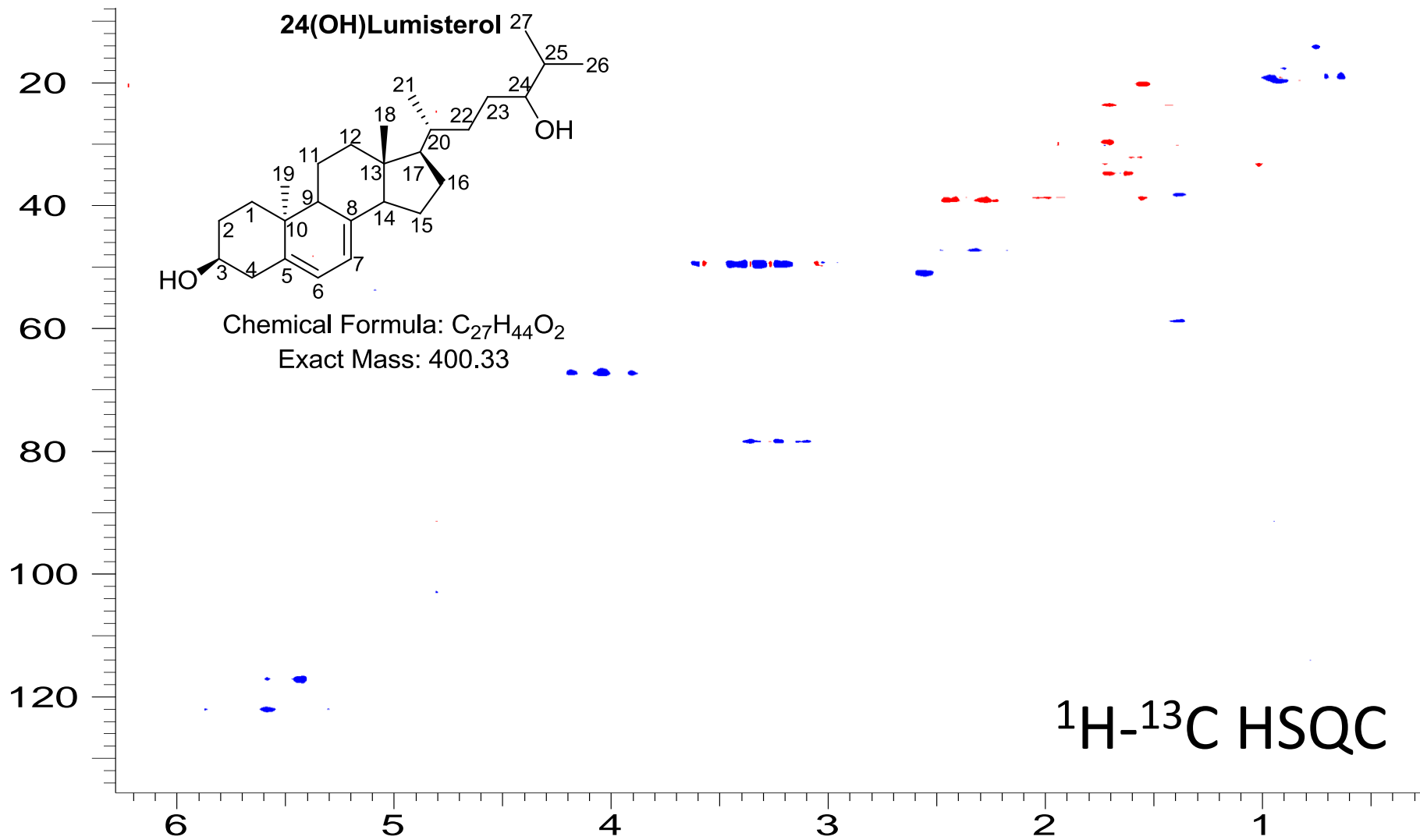
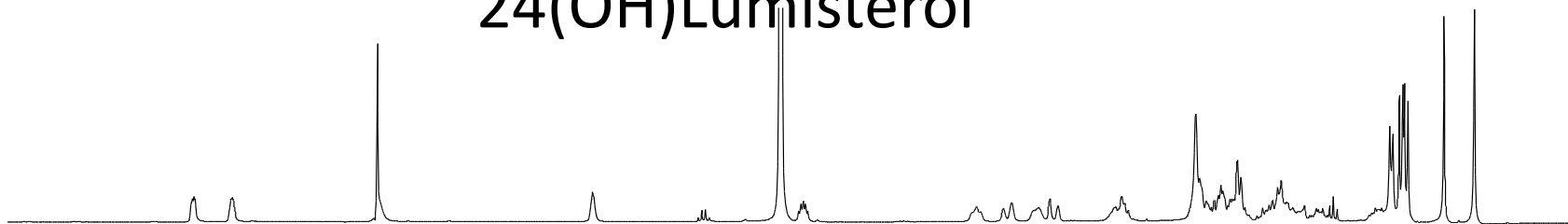
1H NMR



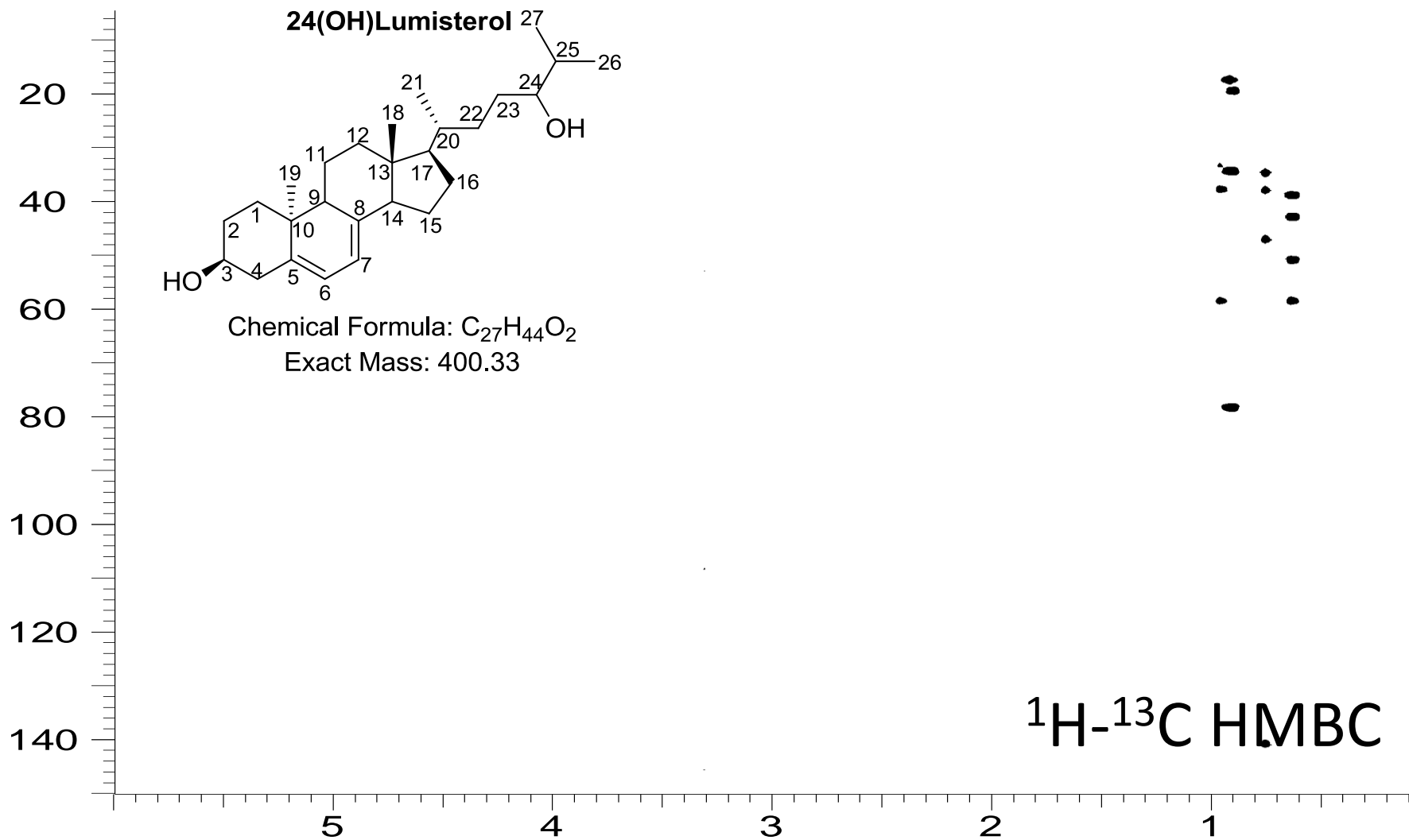
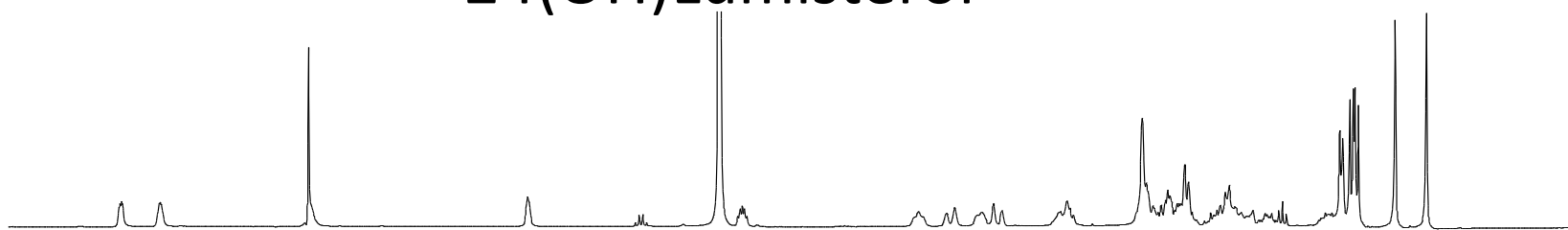
24(OH)Lumisterol



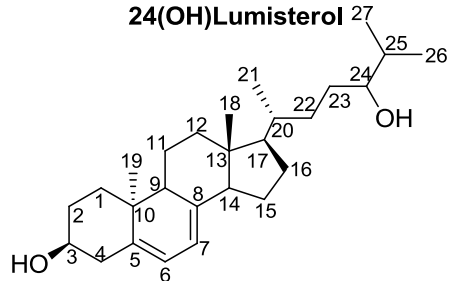
24(OH)Lumisterol



24(OH)Lumisterol



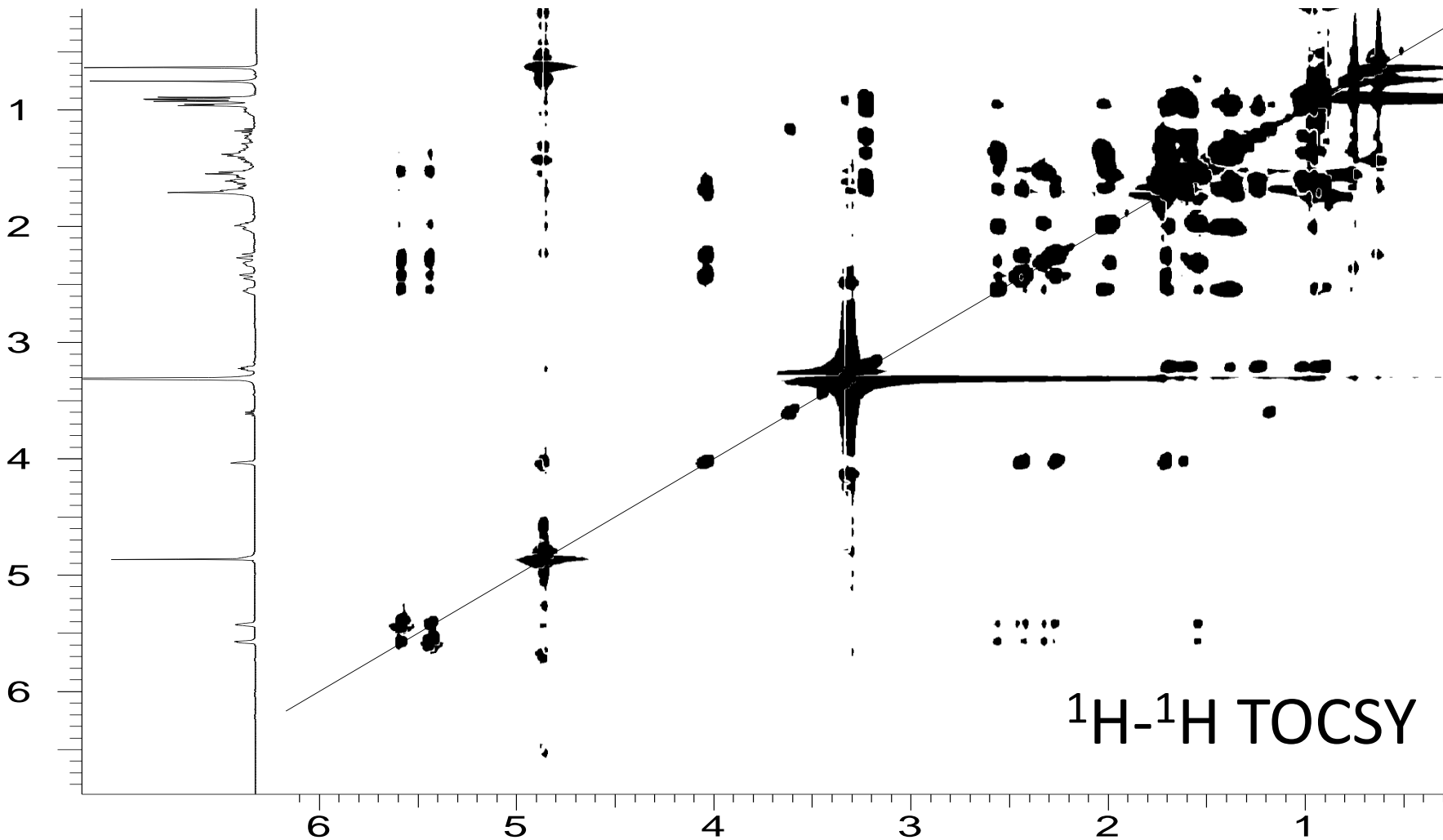
24(OH)Lumisterol



Chemical Formula: C₂₇H₄₄O₂

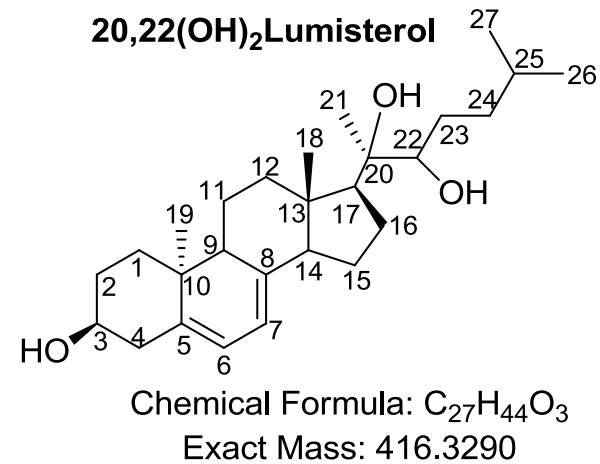
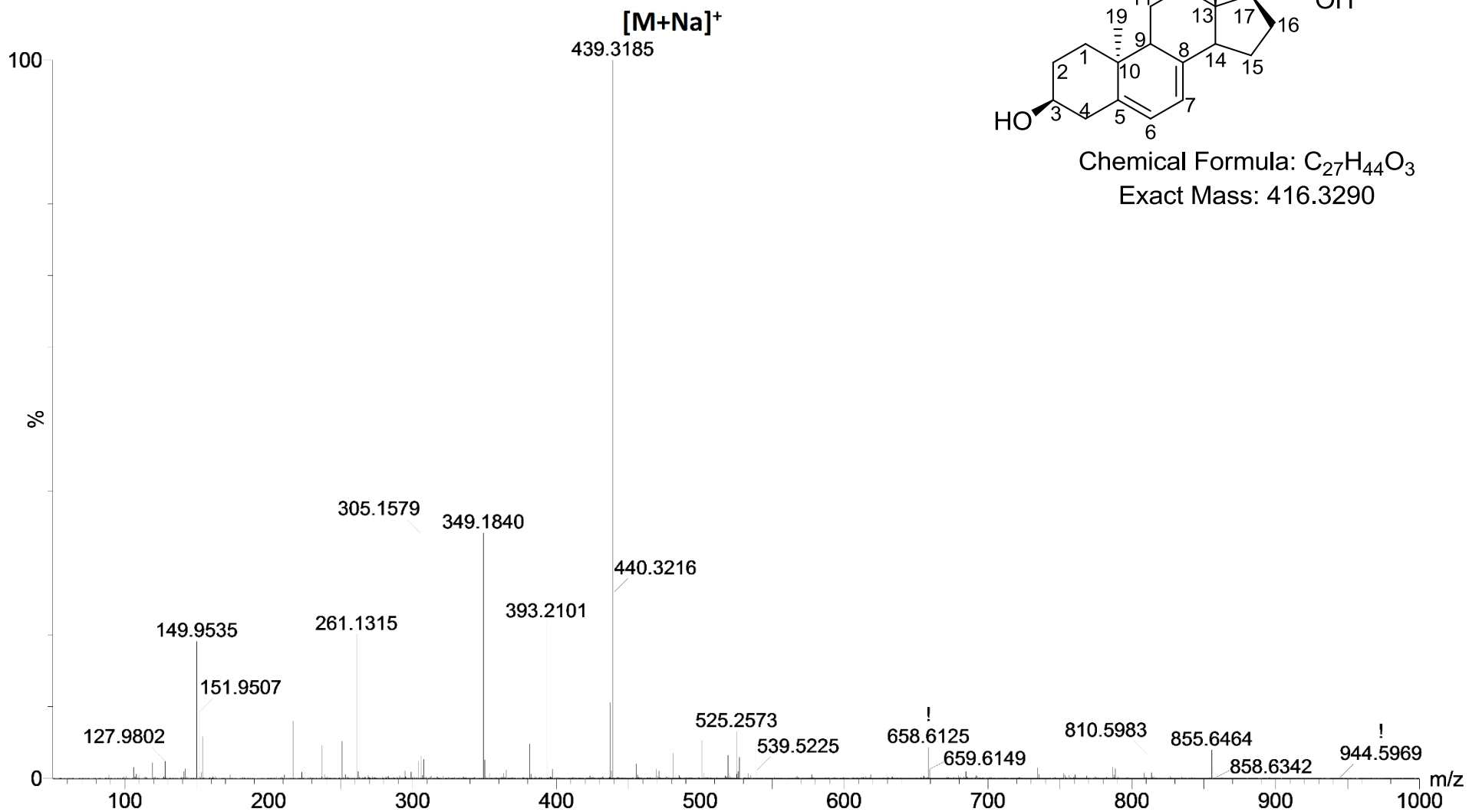
Exact Mass: 400.33

24(OH)Lumisterol



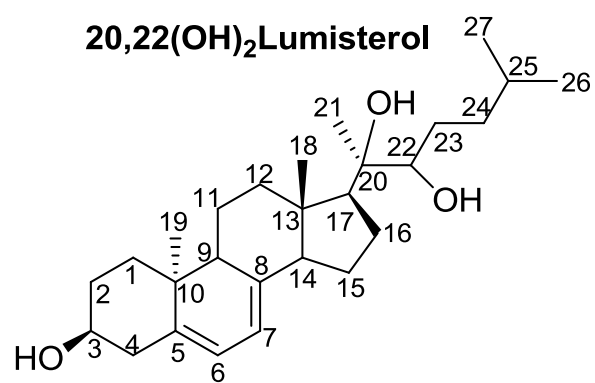
Product A: 20,22(OH)₂Lumisterol

Mass spectrum



20,22(OH)₂Lumisterol

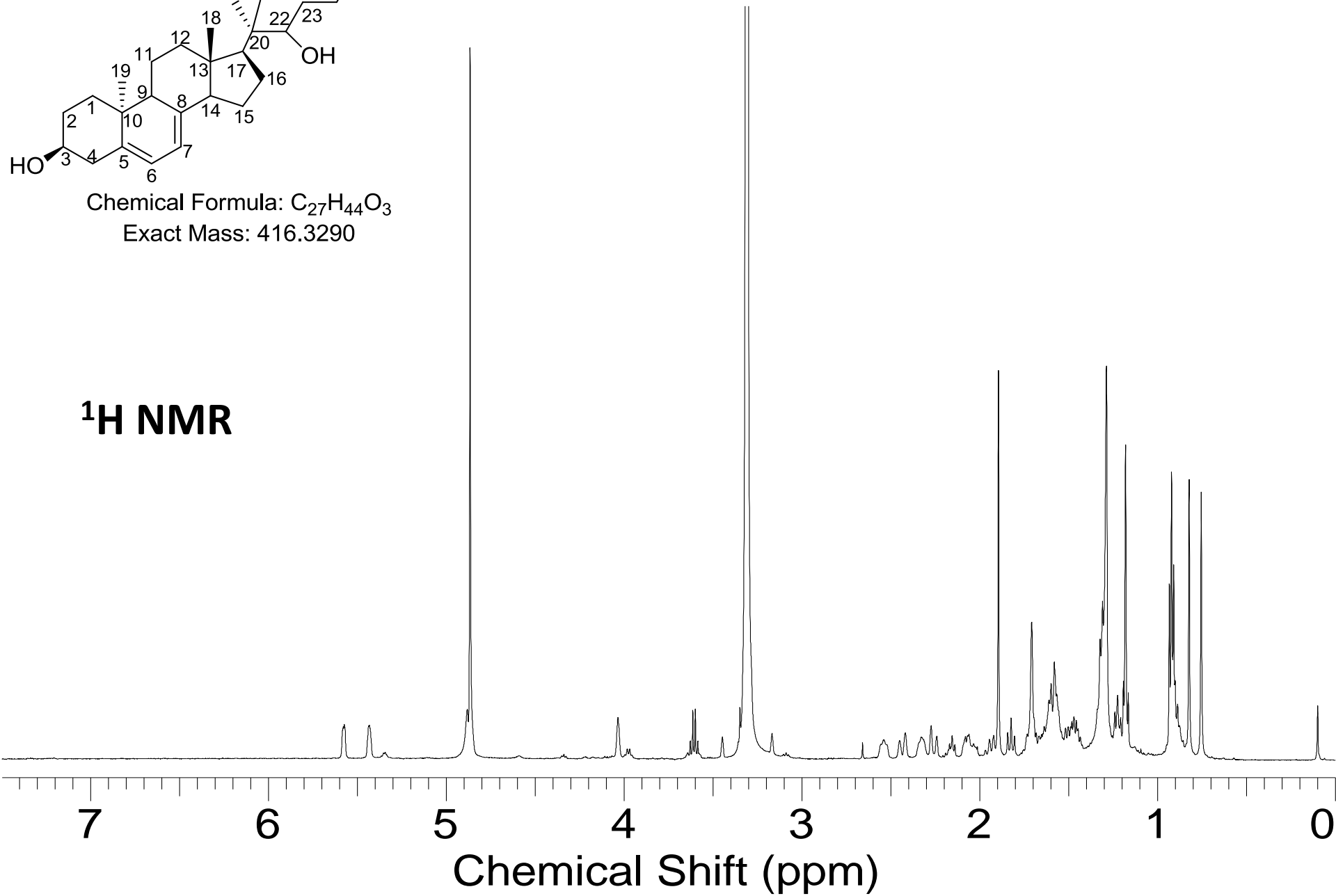
20,22(OH)₂Lumisterol



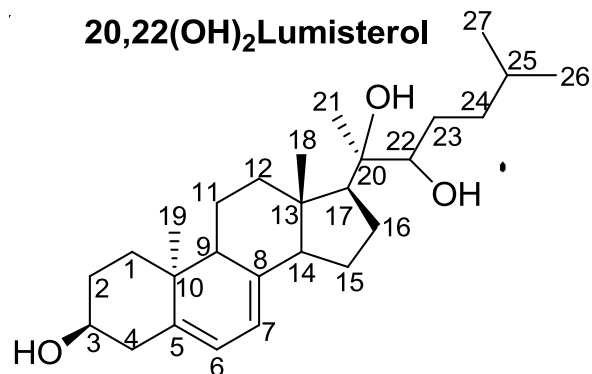
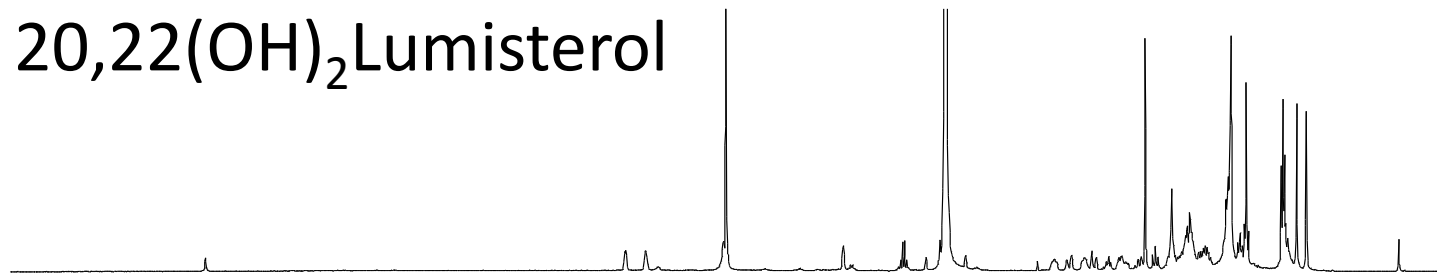
Chemical Formula: C₂₇H₄₄O₃

Exact Mass: 416.3290

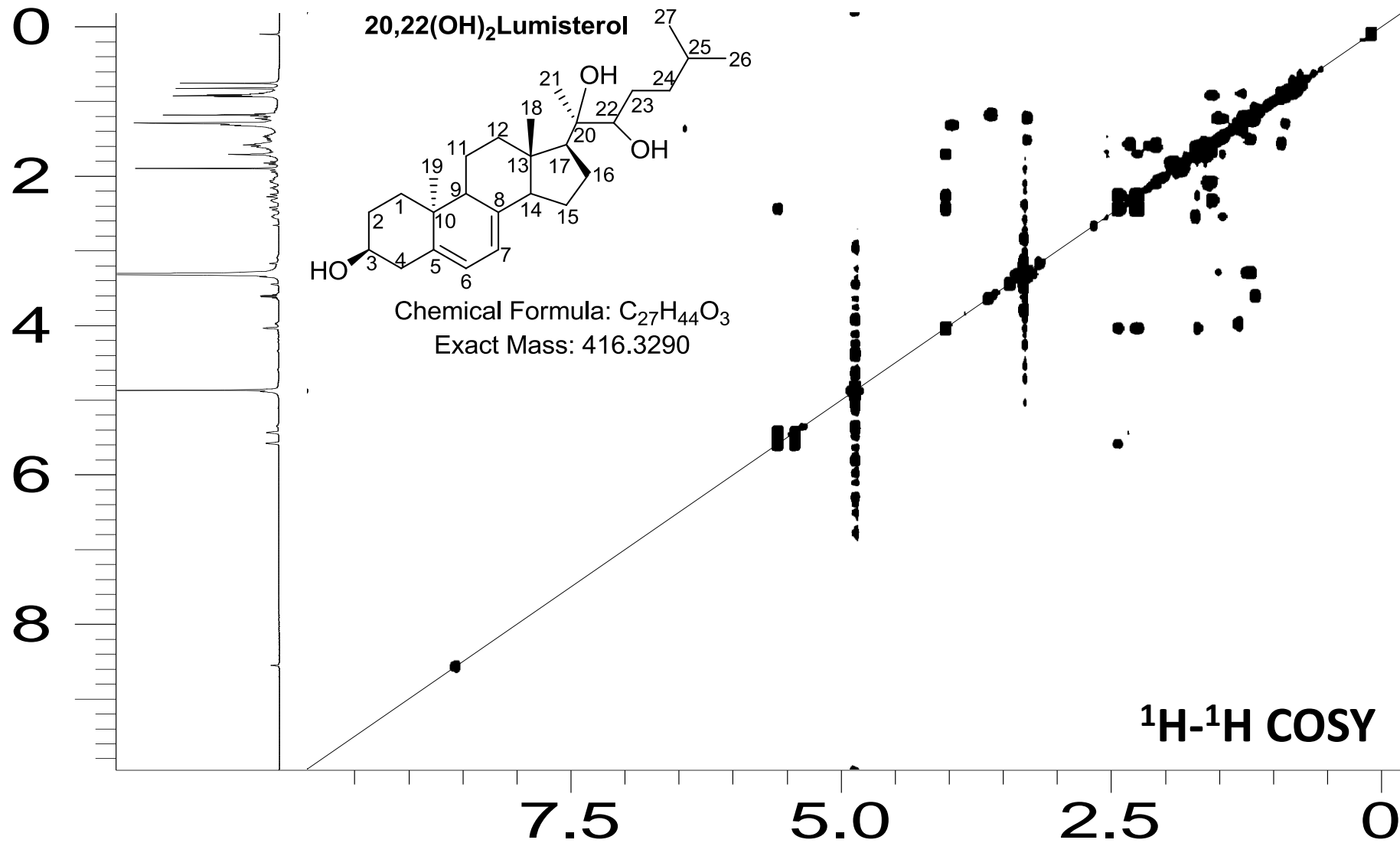
¹H NMR



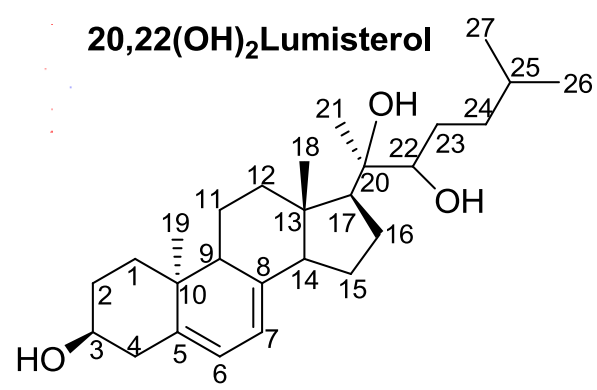
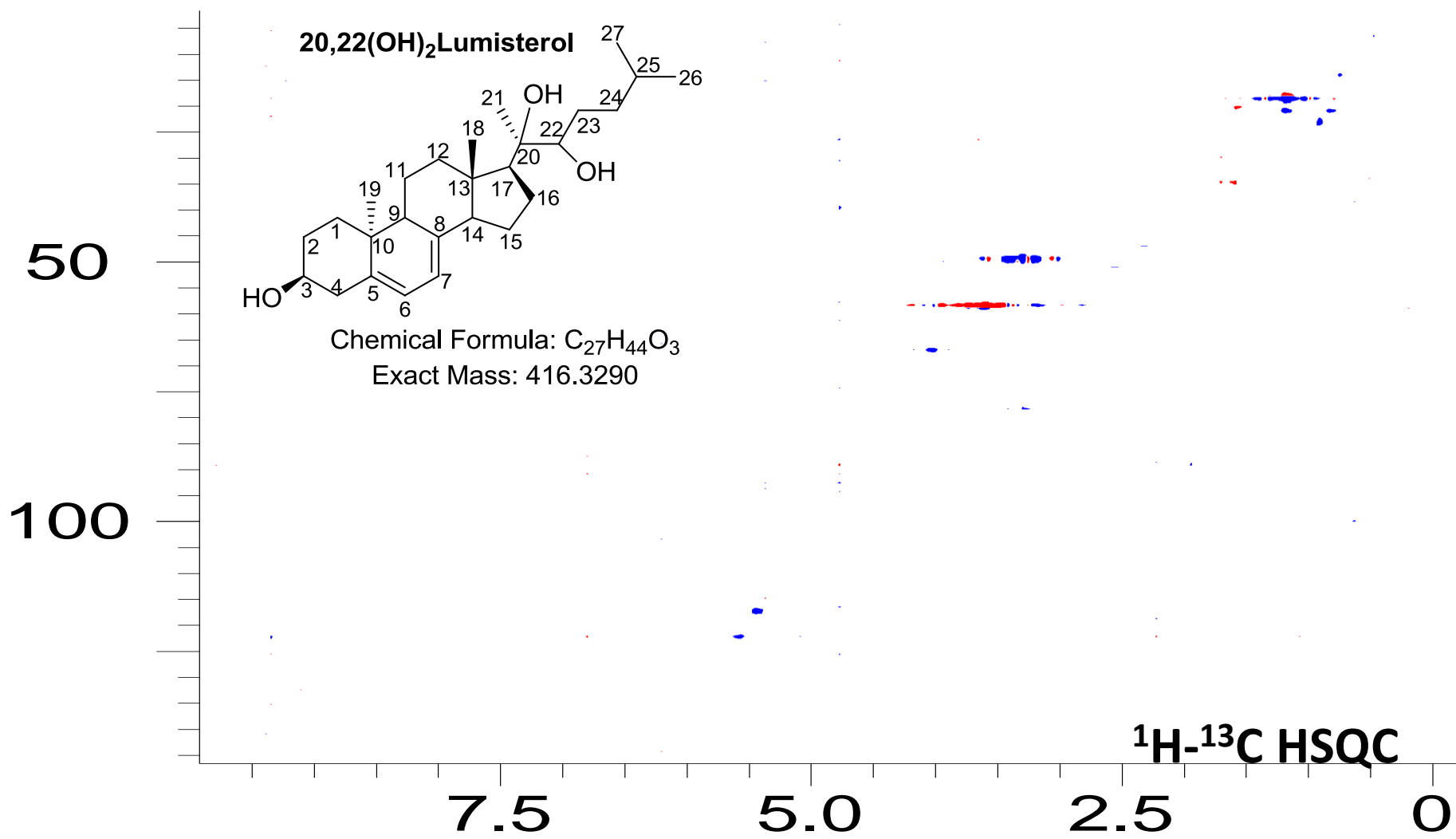
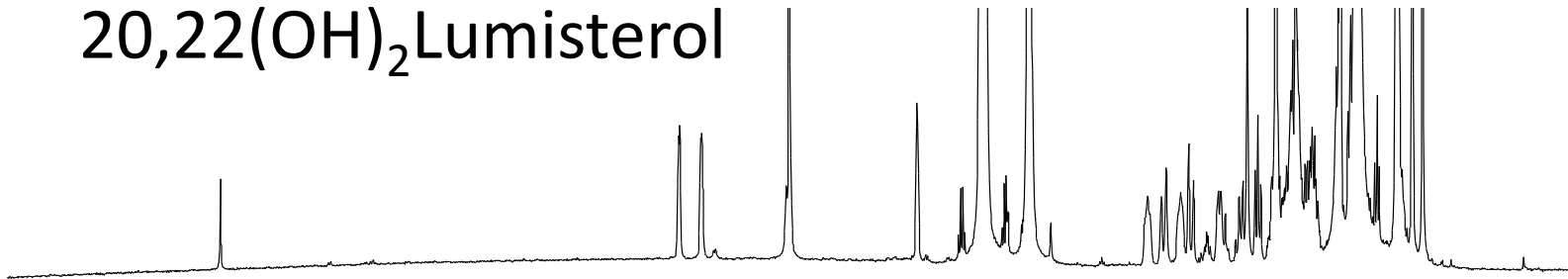
20,22(OH)₂Lumisterol



Chemical Formula: C₂₇H₄₄O₃
Exact Mass: 416.3290



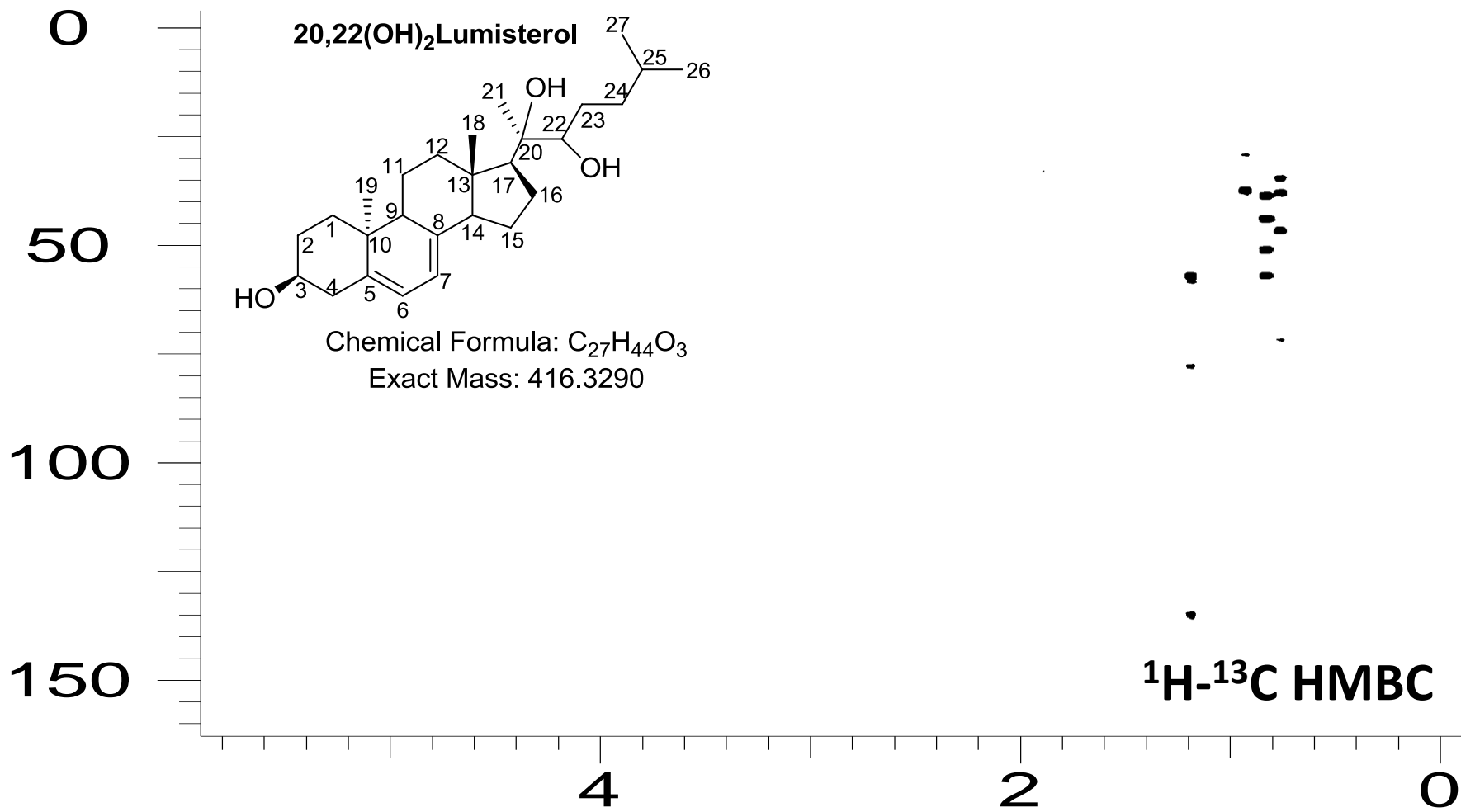
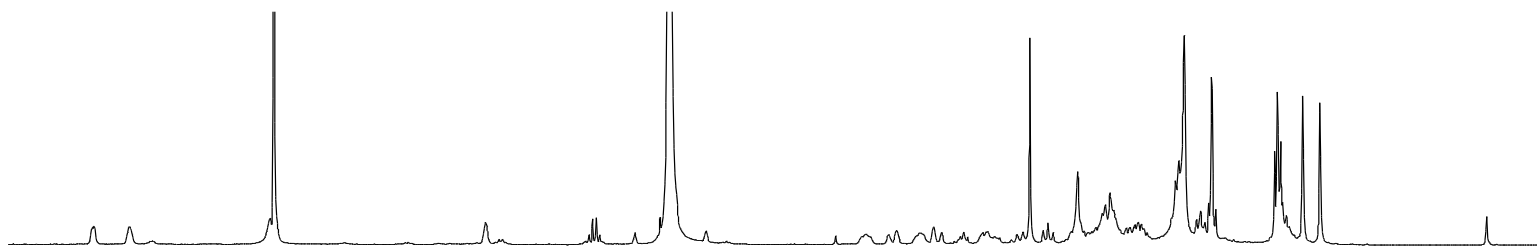
20,22(OH)₂Lumisterol



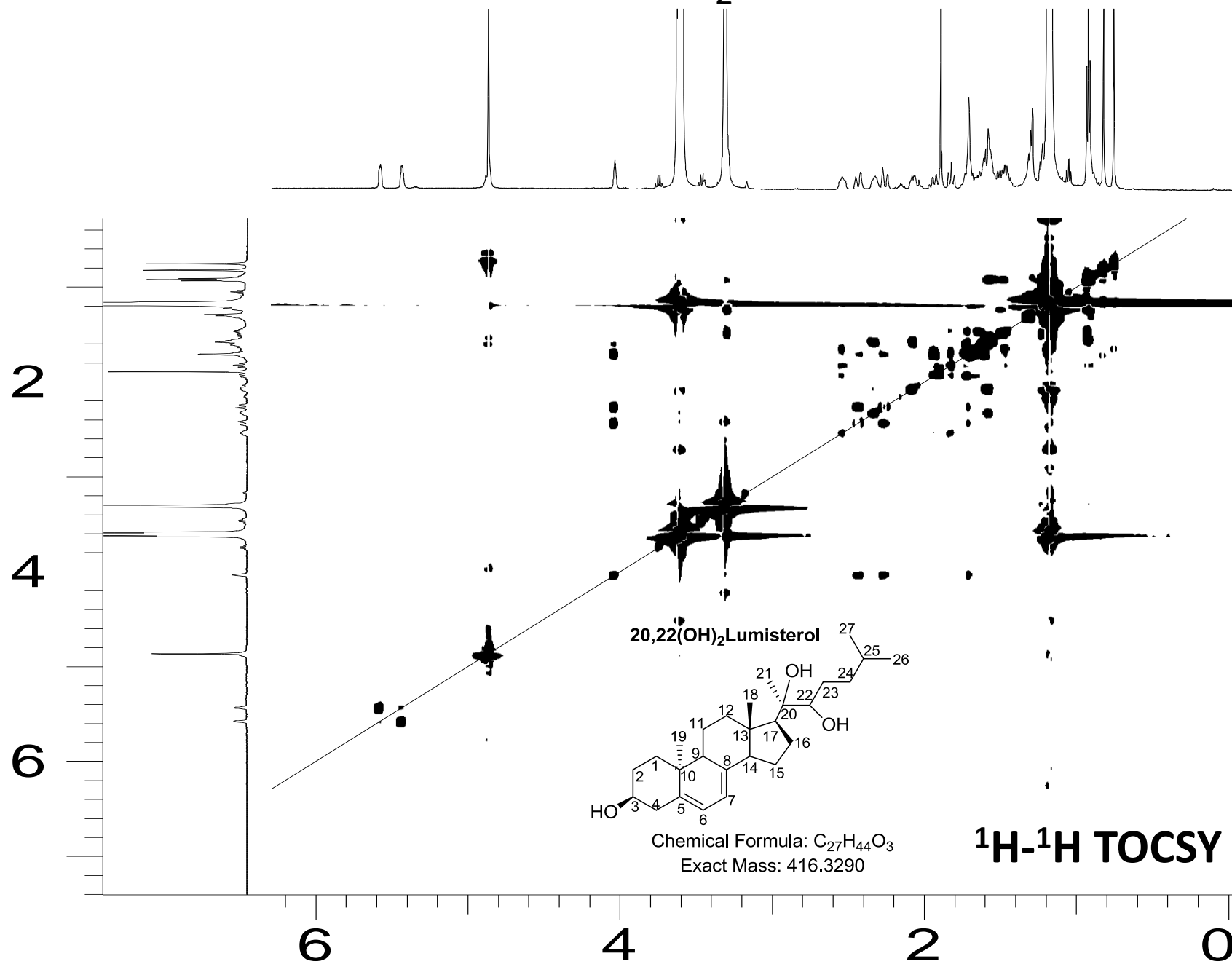
Chemical Formula: C₂₇H₄₄O₃
Exact Mass: 416.3290

¹H-¹³C HSQC

20,22(OH)₂Lumisterol

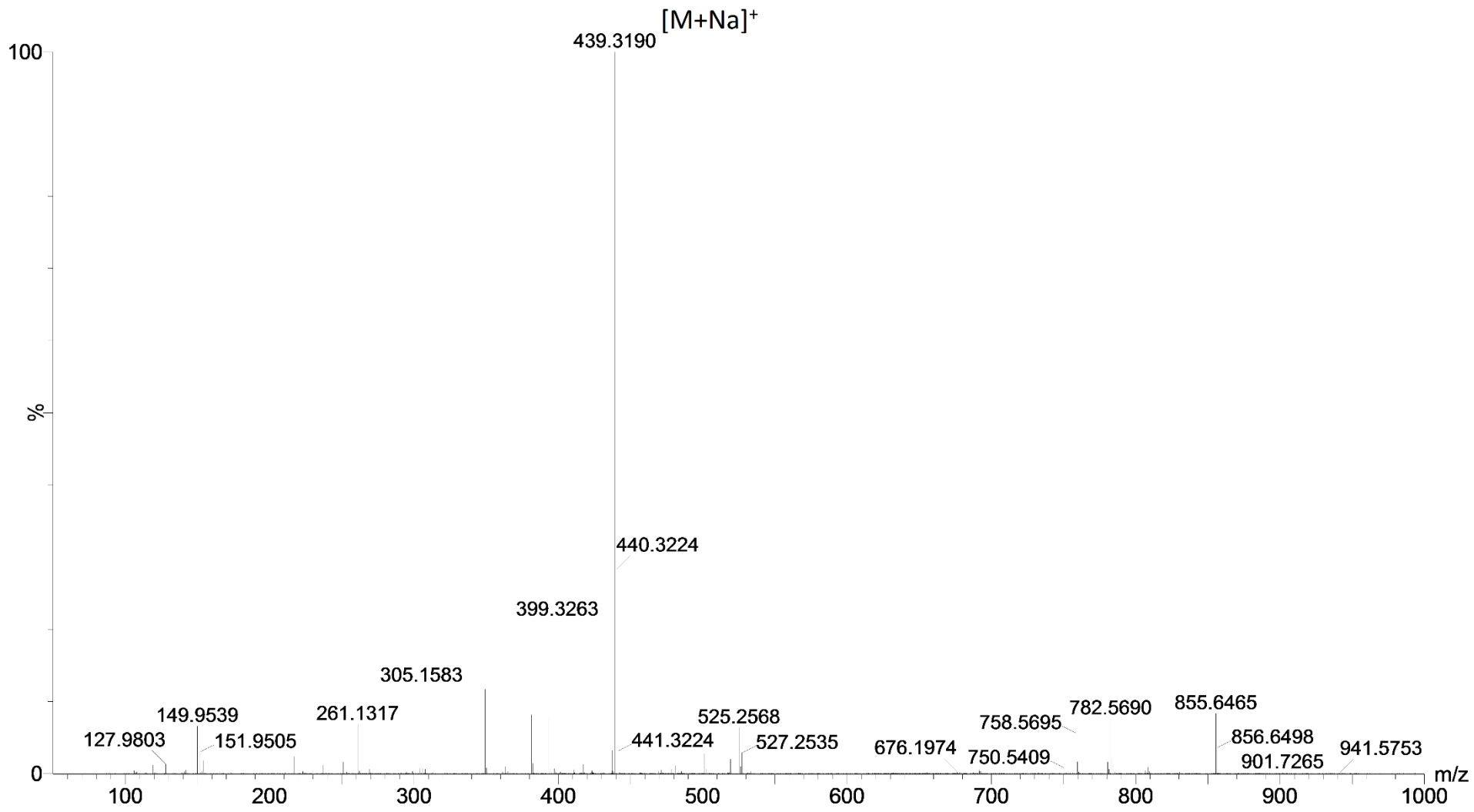


20,22(OH)₂Lumisterol



Product E: dihydroxy-lumisterol

Mass spectrum of product E



Product G: dihydroxy-lumisterol

Mass spectrum of product G

