

# Supplementary Information

**Title:** Lipocalin2 as a plasma marker for tumors with hypoxic regions

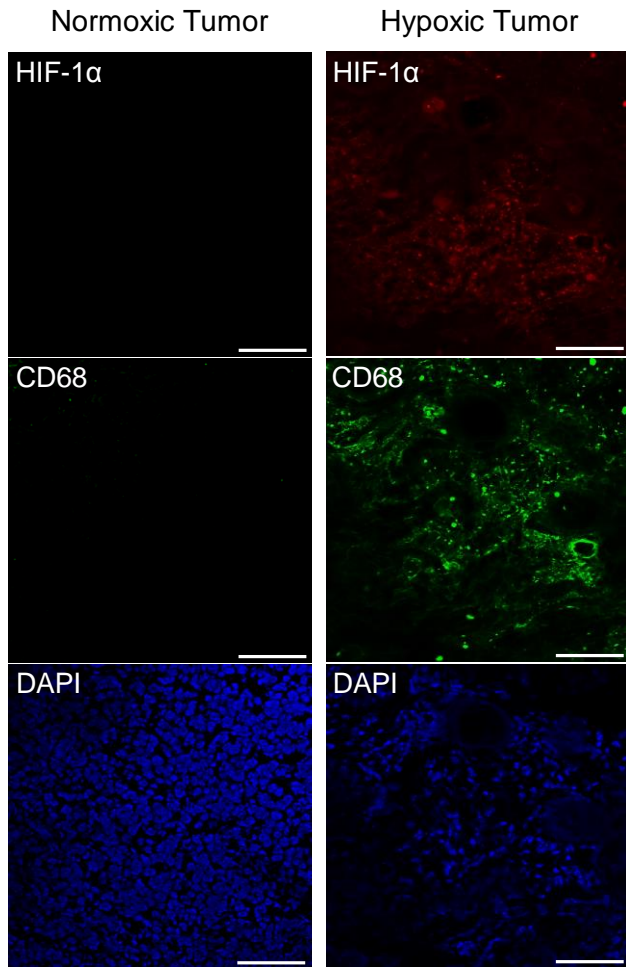
Author names:

Ibuki Nakamura<sup>1</sup>, Susumu Hama<sup>1\*</sup>, Shoko Itakura<sup>1</sup>, Ichiro Takasaki<sup>2</sup>, Takayuki Nishi<sup>1</sup>, Yoshiaki Tabuchi<sup>2</sup>, & Kentaro Kogure<sup>1</sup>

Affiliations:

<sup>1</sup>Department of Biophysical Chemistry, Kyoto Pharmaceutical University, Kyoto 607-8414, Japan;

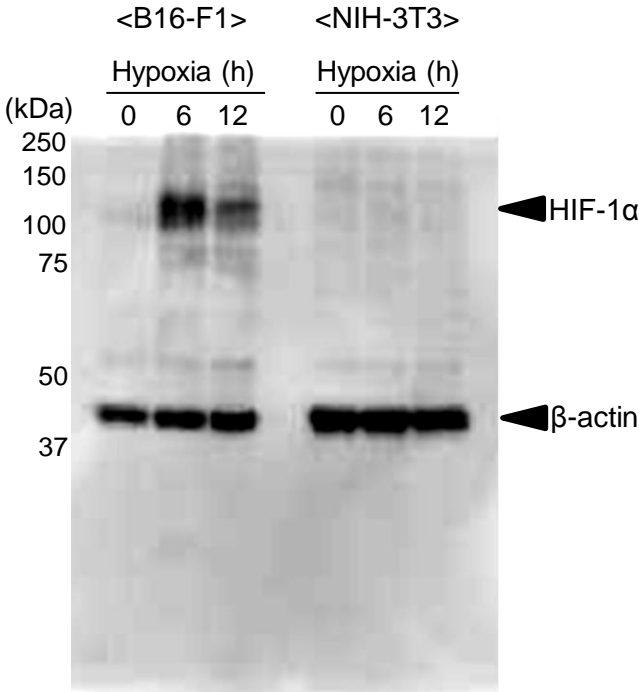
<sup>2</sup>Division of Molecular Genetics Research, Life Science Research Center, University of Toyama, Toyama, Japan.



**Images of regions positive for the macrophage marker CD68 in hypoxic tumor tissues.**

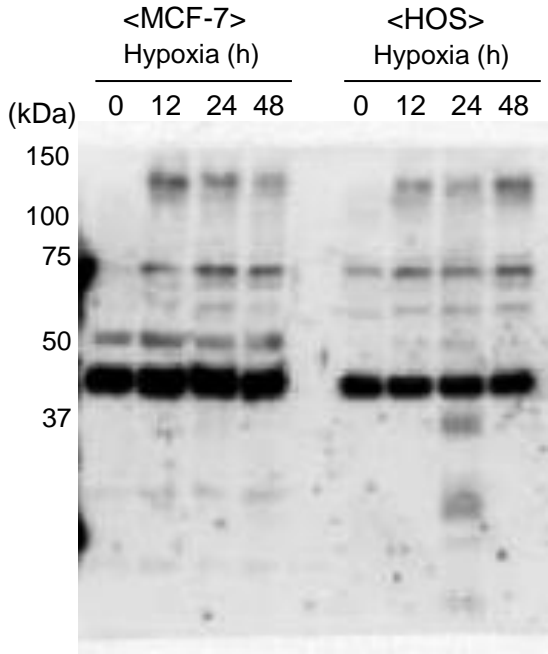
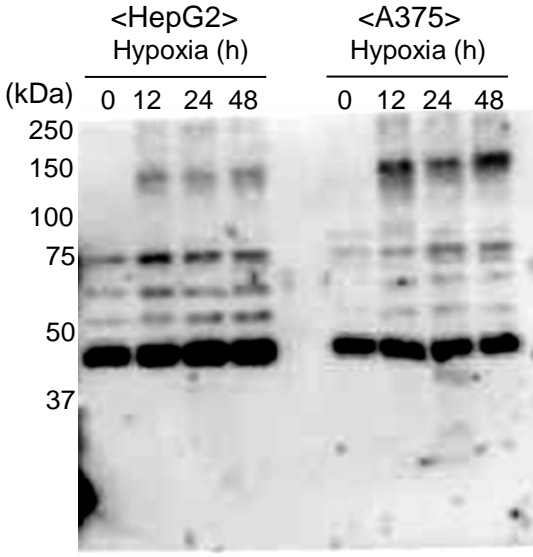
HIF-1 $\alpha$  and CD68 protein levels were measured using immunohistochemical staining in tissue sections isolated from normoxic and hypoxic tumors. Red, green, and blue signals show HIF-1 $\alpha$ , CD68, and nuclei, respectively. The scale bar indicates 100  $\mu$ m. Images of macrophage marker CD68-positive region in hypoxic tumor tissue.

Supplementary fig. S2



Full-length blots/gels regarding figure 4 (a)

Supplementary fig. S3



Full-length blots/gels regarding figure 5 (a)