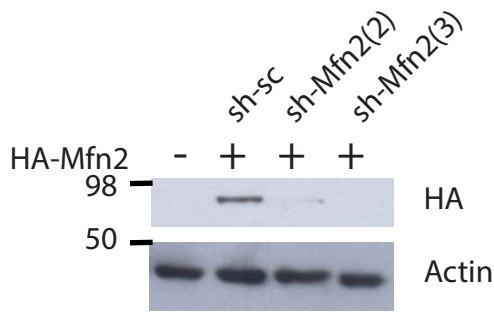


Figure S3 (related to Figure 3)

A



B

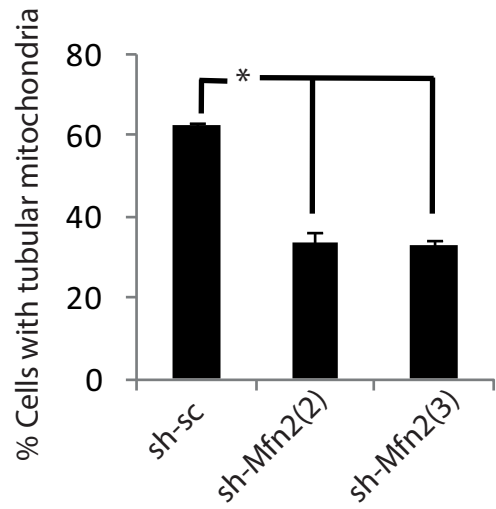


Figure S3. A) HEK293 cells were transfected with plasmids encoding HA-Mfn2 plus shRNA targeted against different sequences of Mfn2 (sh-Mfn2) or sh-sc. After 48 hours protein was harvested and subjected to western blot. B) Analysis of mitochondrial morphology in neurons expressing different sh-Mfn2 or sh-sc (n=3). *p<0.05, two-tailed T-test.