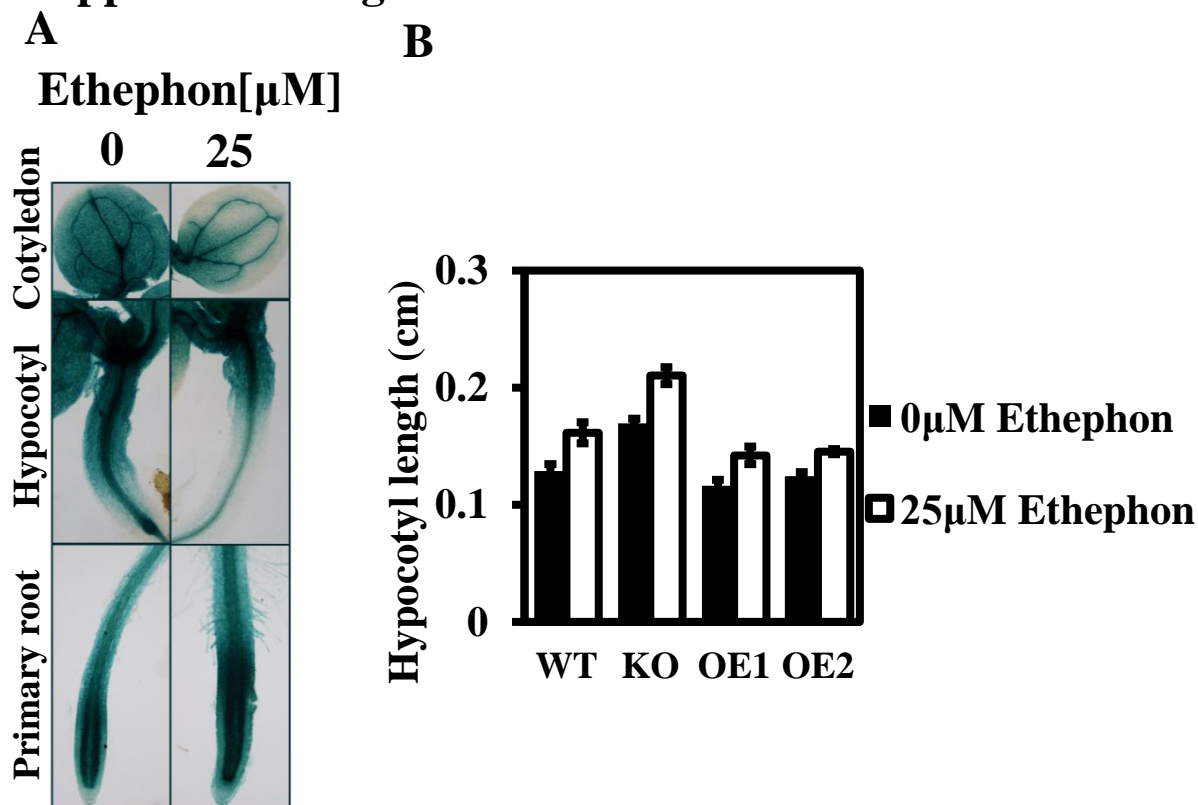


## Supplemental Figure S6.



### Supplemental Figure S6. Response of *pPLAIII $\delta$* to Ethephon.

(A) 5-old-day plants harboring *pPLAIII $\delta$ :GUS* were treated with 25 $\mu\text{M}$  Ethephon for 48 h, and GUS activity was detected as indicated by staining intensity in cotyledon, hypocotyl and primary root.

(B) Hypocotyl length of WT, KO, OE1 and OE2 with 25 $\mu\text{M}$  Ethephon incubation in the light. 3-old-day plants were transferred to the medium supplemented 25 $\mu\text{M}$  Ethephon for 48h.