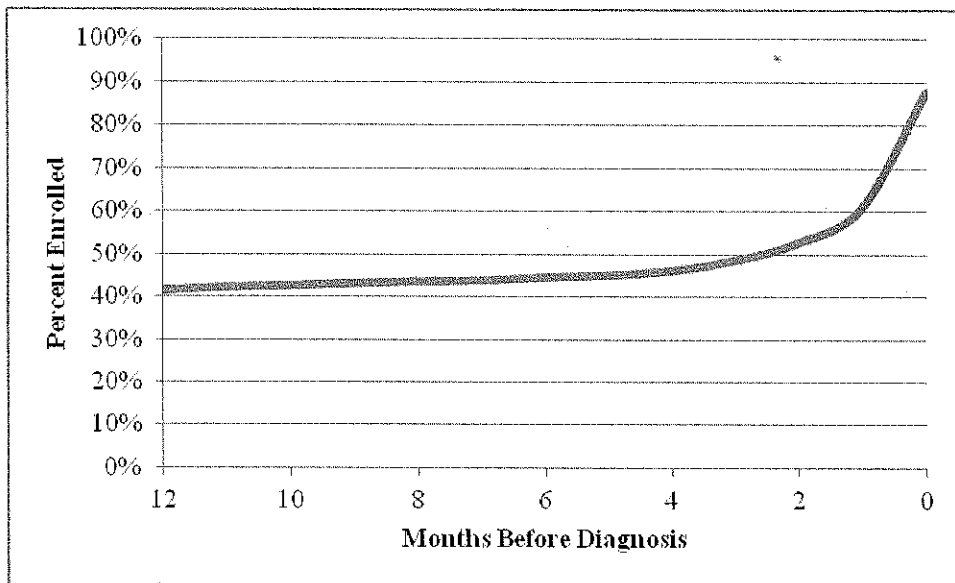


Appendix 1: Length of Continuous Enrollment among Patients who Link to Monthly Medicaid Enrollment Files

Number of Months Before Diagnosis	Percentage of Medicaid Patients Enrolled [#]
0	87.5%
1	61.0%
2	52.8%
3	48.6%
4	46.2%
5	45.1%
6	44.6%
7	43.9%
8	43.6%
9	43.2%
10	42.6%
11	42.2%
12	41.6%

[#]Percentage of total population linking to Medicaid enrollment files. The percentage does not add to 100% at month 0 as portion of the sample (12.5%) linked to enrollment files only after their diagnosis.



Appendix 2: Listing and Description of Medi-Cal Aid Codes for Restricted Eligibility

Code	Description	Code	Description
0L	Breast and Cervical Cancer Treatment Program (BCCTP) Transitional coverage .	7C	100 Percent OBRA Child.
0R	BCCTP – High Cost Other Health Coverage (OHC). State-funded.	7F	Presumptive Eligibility (PE) – Pregnancy Verification.
0T	BCCTP – State-Funded.	7G	Presumptive Eligibility (PE) – Ambulatory Prenatal Care.
0U	BCCTP – Undocumented Aliens.	7H	Tuberculosis (TB) Program.
0V	Post-BCCTP.	7K	Continuous Eligibility for Children (CEC).
0X	BCCTP Transitional Coverage.	7M	Minor Consent Program. Covers eligible minors at least 12 years of age and under the age of 21.
0Y	BCCTP Transitional Coverage.	7N	Minor Consent Program. Covers eligible pregnant minors under the age of 21.
1U	Restricted Federal Poverty Level – Aged.	7P	Minor Consent Program. Covers eligible minors at least 12 years of age and under the age of 21.
3T	Initial Transitional Medi-Cal (TMC).	7R	Minor Consent Program. Covers eligible minors under age 12.
3V	AFDC – 1931(b) Non CalWORKS.	7I	Medi-Cal Dialysis Only Program/Medi-Cal Dialysis Supplement Program (DP/DSP).
44	200 Percent FPL Pregnant (Income Disregard Program – Pregnant).	73	Total Parenteral Nutrition (TPN).
48	200 Percent FPL Pregnant Omnibus Budget Reconciliation Act (OBRA).	74	133 Percent Program (OBRA).
5F	OBRA Alien – Pregnant Woman.	76	60-Day Postpartum Program.
5J	SB 87 Pending Disability Program.	77	Organ transplants: anti-rejection medications program.
5R	SB 87 Pending Disability Program.	8F	CMSP Companion Aid Code.
5T	Continuing TMC.	8H	Family PACT (FPACT).
5W	Four-Month Continuing Pregnancy and Emergency Services Only.	8N	133 Percent Excess Property Child – Emergency Services Only.
50	County Medical Services Program (CMSP). OBRA/Out of County Care.	8T	100 Percent Excess Property Child – Pregnancy and Emergency Services Only.
53	Medically Indigent – Long Term Care (LTC) services.	80	Qualified Medicare Beneficiary (QMB).
55	OBRA Not PRUCOL – Long Term Care (LTC) services.	84	MI – Adult.
58	OBRA Aliens.	85	MI – Adult.
6U	Restricted Federal Poverty Level – Disabled.	88	MI – Adult – Disability Pending.
69	200 Percent Infant OBRA.	89	MI – Adult – Disability Pending SOC.

Private	-0.944 (14.53)**	-0.687 (9.03)**	-0.683 (8.83)**	-1.017 (6.19)**	-1.097 (6.18)**	-1.015 (5.56)**	-0.665 (15.32)**	-0.613 (12.20)**	-0.555 (10.91)**
Medicare	-0.017	-0.054	-0.028	-0.378	-0.392	-0.485	-0.331	-0.357	-0.353
	-0.21	-0.55	-0.27	-1.77	-1.71	(2.07)*	(6.01)**	(5.61)**	(5.50)**
Discontinuous Medicaid	0.241	0.016	-0.052	-0.177	-0.293	-0.372	0.193	0.031	0.007
	(3.22)**	-0.18	-0.58	-0.92	-1.42	-1.76	(3.68)**	-0.53	-0.12
Uninsured	-0.155	-0.204	-0.251	-0.503	-0.668	-0.761	-0.248	-0.353	-0.4
	(2.10)*	(2.34)*	(2.84)**	(2.61)**	(3.22)**	(3.59)**	(4.79)**	(5.93)**	(6.69)**
Distance to high volume hospital (miles)	-0.001	0.002	0.002	0	0.001	0.002	0	0.001	0
	-0.79	-1.21	-1.68	-0.09	-0.5	-0.61	-0.33	-0.7	-0.44
% Below 200% of FPL	0.004	0.004	0.003	0.007	0.007	0.007	0.002	0.003	0.003
	(2.01)*	-1.51	-1.17	-1.53	-1.4	-1.38	-1.75	-1.83	-1.6
% without a high school diploma	0.009	0.008	0.009	0.004	0.001	-0.001	0.012	0.011	0.009
	(2.68)**	(2.02)*	(2.20)*	-0.57	-0.07	-0.13	(5.17)**	(4.32)**	(3.49)**
% reporting poor English proficiency	-0.015	-0.012	-0.013	-0.008	-0.005	-0.004	-0.011	-0.013	-0.011
	(3.81)**	(2.65)**	(2.79)**	-0.9	-0.51	-0.43	(4.31)**	(4.32)**	(3.53)**

Summary stage

Localized

ref

ref

ref

ref

ref

ref

Regional, direct extension	0.615	0.76	0.627	0.659	0.747	0.617
	(6.73)**	(8.24)**	(3.71)**	(3.74)**	(10.22)**	(7.99)**
Regional, lymph nodes	0.224	0.393	0.371	0.367	0.886	0.489
	(2.13)*	(3.72)**	(2.00)*	-1.9	(13.22)**	(6.89)**
Regional, both	0.871	1.034	0.701	0.889	1.263	0.841
	(10.64)**	(12.48)**	(4.70)**	(5.63)**	(19.00)**	(11.95)**
Remote	2.98	2.933	1.942	1.593	2.676	1.947
	(48.86)**	(47.78)**	(15.53)**	(12.20)**	(52.87)**	(35.04)**
Unknown	2.15	1.929	1.29	0.979	1.92	1.24
	(21.52)**	(19.15)**	(7.74)**	(5.69)**	(25.36)**	(15.75)**
Location‡						
C__0	ref	ref	ref	ref	ref	ref
C__1	-0.632	-0.867	0.452	0.624	-0.402	-0.274
	(4.80)**	(6.52)**	-1.18	-1.64	(7.76)**	(5.33)**
C__2	0.063	0.05	0.615	0.888	-0.459	-0.317
	-0.81	-0.63	-1.23	-1.75	(5.85)**	(3.99)**
C__3	0.09	0.09	0.503	0.56	-0.436	-0.266
	-0.8	-0.79	-1.46	-1.65	(7.78)**	(4.75)**
C__4	-0.024	-0.021	0.567	0.784		

C__5	-0.25	-0.21	-1.9	(2.67)**	-0.132	0.106
	-0.219	-0.198	0.196	0.51	-1.18	-0.91
	-1.71	-1.53	-0.68	-1.81	-0.003	0.052
C__6	-0.325	-0.361			-0.05	-0.92
	(3.07)**	(3.37)**			0.634	0.634
	-0.475	-0.586			-1.38	-1.94
C__7	(7.17)**	(8.70)**			0.761	1.044
	0.129	0.056	0.453	(2.38)*	(3.30)**	(3.30)**
	-0.68	-0.28				
C__8	0.703	0.341				
	(6.77)**	(3.17)**				
C19.9 (Rectosigmoid junction)	-0.37	-0.64				
	(4.44)**	(7.45)**				
C20.9 (Rectum NOS)	-0.333	-0.683				
	(5.06)**	(9.88)**				
Elixhauser Comorbidity Index	0.289	0.283	0.173	0.179	0.216	0.198
	(21.16)**	(20.33)**	(5.83)**	(5.83)**	(22.60)**	(20.36)**
Receipt of a definitive operation		-0.906		-1.417		-1.519
		(20.93)**		(12.46)**		(32.11)**

Constant	-2.289	-4.166	-3.43	0.177	-1.802	-1.588	-0.787	-2.768	-1.991
	(16.75)**	(23.98)**	(19.17)**	-0.49	(3.59)**	(3.13)**	(7.41)**	(19.90)**	(13.95)**
N	36,129	36,129	36,129	2,924	2,924	2,924	33,093	33,093	33,093

(Con't) Appendix 2: Full Regression Results from Nested Models in All Six Cancers

	Ovary			Pancreas			Stomach		
	(1)	(2)	(3)	(1)	(2)	(3)	(1)	(2)	(3)
Age	0.042	0.017	0.012	0.037	0.034	0.034	0.002	0.012	0.013
	(12.08)**	(4.58)**	(2.94)**	(11.54)**	(9.45)**	(9.14)**	-0.71	(3.62)**	(3.94)**
Female	-†	-	-	0.296	0.26	0.245	0.061	0.082	0.059
	-	-	-	(6.05)**	(4.86)**	(4.54)**	-1.18	-1.3	-0.92
Race									
Non-Hispanic White	ref	ref	ref	ref	ref	ref	ref	ref	ref
Non-Hispanic Black	0.671	0.528	0.451	-0.112	-0.163	-0.179	-0.018	0.007	-0.035
	(5.36)**	(3.93)**	(3.19)**	-1.26	-1.67	-1.82	-0.18	-0.05	-0.28
Hispanic	0.021	0.018	-0.034	-0.097	-0.104	-0.115	-0.053	-0.149	-0.14
	-0.24	-0.19	-0.34	-1.36	-1.32	-1.45	-0.78	-1.8	-1.67
Asian/Pacific Islander	-0.025	0.194	0.193	-0.039	-0.044	-0.029	-0.37	-0.184	-0.143
	-0.23	-1.73	-1.66	-0.46	-0.47	-0.3	(4.98)**	(2.00)*	-1.53

Other	-0.523	-0.466	-0.499	-0.566	-0.489	-0.532	-0.457	-0.322	-0.344
	-1.09	-0.9	-0.93	(2.19)*	-1.69	-1.83	-1.49	-0.87	-0.93

Insurance

Continuous Medicaid	ref	ref	ref	ref	ref	ref	ref	ref	ref
Private	-0.864	-0.553	-0.299	-0.699	-0.678	-0.677	-0.333	-0.273	-0.225
	(7.39)**	(4.30)**	(2.22)*	(6.36)**	(5.58)**	(5.53)**	(3.48)**	(2.39)*	-1.93
Medicare	-0.236	-0.252	-0.134	-0.156	-0.205	-0.177	0.052	0.263	0.27
	-1.4	-1.37	-0.7	-1.03	-1.24	-1.06	-0.37	-1.55	-1.58
Discontinuous Medicaid	-0.038	0.099	0.026	0.022	0.004	0.036	0.357	0.238	0.184
	-0.28	-0.67	-0.17	-0.17	-0.02	-0.25	(3.20)**	-1.8	-1.37
Uninsured	-0.266	-0.13	-0.111	-0.422	-0.484	-0.552	-0.011	-0.071	-0.08
	(1.99)*	-0.88	-0.72	(3.31)**	(3.45)**	(3.90)**	-0.1	-0.55	-0.61

Distance to high volume hospital (miles)

	0.002	0.002	0.002	0	0	0.001	0	0.001	0.001
	-1.75	-1.63	-1.5	-0.31	-0.44	-0.72	-0.04	-0.57	-0.48

% Below 200% of FPL

	0.006	0.007	0.006	0.005	0.005	0.005	0.001	0.004	0.004
	-1.63	-1.74	-1.38	-1.55	-1.56	-1.44	-0.42	-1.04	-1.2

% without a high school diploma

	0.016	0.013	0.011	0.007	0.009	0.009	0.013	0.012	0.009
	(2.60)**	-1.92	-1.6	-1.34	-1.6	-1.64	(2.89)**	(2.29)*	-1.7

		-0.023	-0.02	-0.017	-0.006	-0.009	-0.009	-0.016	-0.016	-0.014
% reporting poor English proficiency		(3.08)**	(2.57)*	(2.09)*	-1.07	-1.49	-1.41	(3.18)**	(2.65)**	(2.21)*
Summary stage										
Localized	ref	ref	ref	ref	ref	ref	ref	ref	ref	ref
Regional, direct extension		0.779	0.755	0.82	0.737	0.82	0.737	1.343	1.343	1.333
		(3.69)**	(3.53)**	(6.90)**	(6.09)**	(6.90)**	(6.09)**	(8.72)**	(8.72)**	(8.43)**
Regional, lymph nodes		0.669	0.542	0.269	0.294	0.269	0.294	0.802	0.802	0.942
		-1.22	-0.98	-1.56	-1.68	-1.56	-1.68	(5.81)**	(5.81)**	(6.67)**
Regional, both		1.023	1.113	0.557	0.571	0.557	0.571	1.363	1.363	1.565
		(2.74)**	(2.97)**	(4.59)**	(4.63)**	(4.59)**	(4.63)**	(11.22)**	(11.22)**	(12.49)**
Remote		2.291	1.981	2.205	1.976	2.205	1.976	3.16	3.16	2.88
		(12.90)**	(10.96)**	(20.48)**	(17.82)**	(20.48)**	(17.82)**	(29.58)**	(29.58)**	(26.40)**
Unknown		3.006	2.112	1.464	1.261	1.464	1.261	2.008	2.008	1.648
		(13.92)**	(9.41)**	(9.90)**	(8.38)**	(9.90)**	(8.38)**	(14.63)**	(14.63)**	(11.76)**
Location‡										
C__0	ref	-	-	ref	ref	ref	ref	ref	ref	ref
C__1				0.142	-0.066	0.142	-0.066	-0.23	-0.23	-0.125
				-1.53	-0.7	-1.53	-0.7	-1.45	-1.45	-0.77
C__2				-0.105	-0.254	-0.105	-0.254	0.167	0.167	0.244