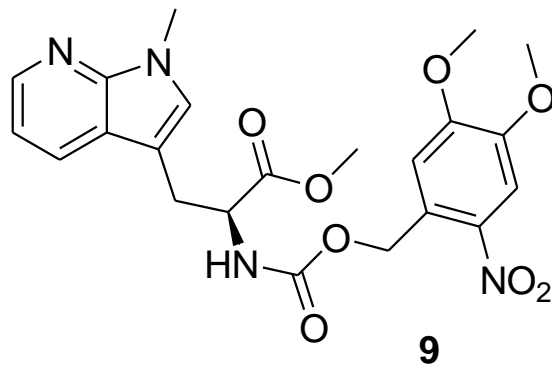


8.272  
8.269  
8.260  
8.257  
7.768  
7.750  
7.634  
7.260  
6.989  
6.977  
6.968  
6.958  
6.882  
5.581  
5.560  
5.468  
5.448  
4.674  
4.653  
3.885  
3.841  
3.825  
3.784  
3.656  
3.262  
3.252  
3.241



1.00  
1.10  
1.03  
1.98  
1.38  
0.92  
2.45  
3.92  
1.83

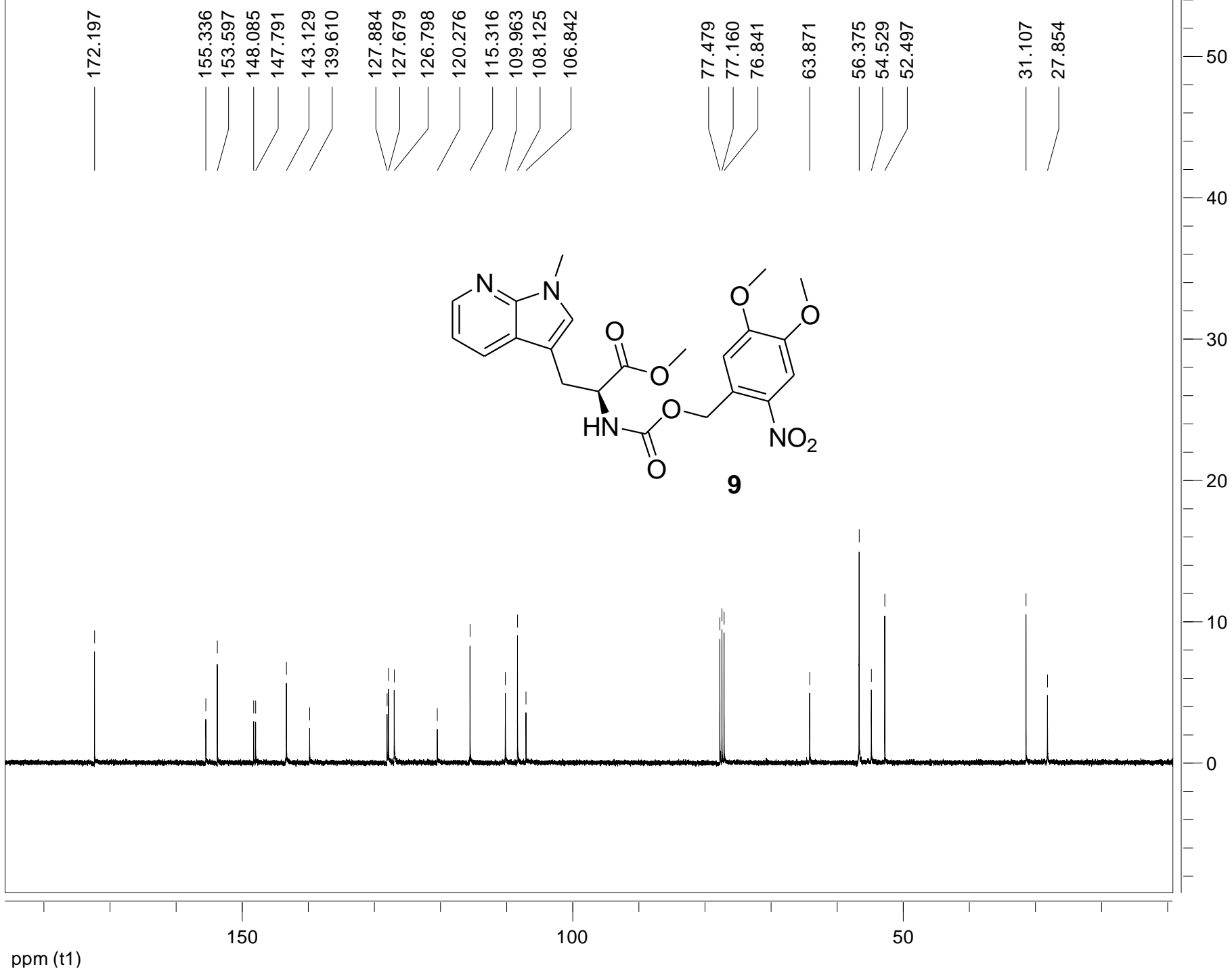
10.0  
ppm (t1)

5.0

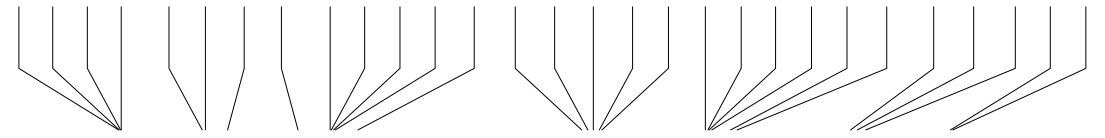
0.0

500

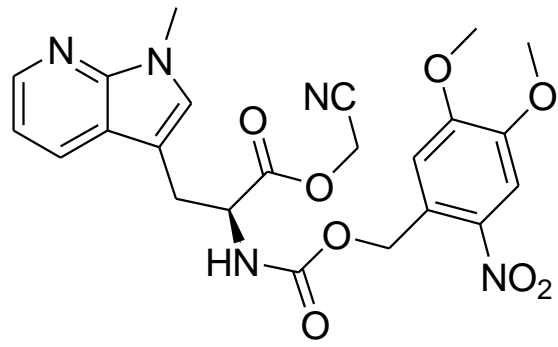
0



8.341  
8.337  
8.329  
8.325  
7.837  
7.818  
7.685  
7.260  
7.067  
7.059  
7.047  
7.035  
6.900  
5.552  
5.515  
5.482  
5.446  
5.430  
4.807  
4.792  
4.785  
4.769  
4.655  
4.616  
3.933  
3.892  
3.842  
3.331  
3.317



1.00  
0.98  
0.99  
1.77  
0.95  
2.80  
1.69  
1.22  
2.38  
1.70



10

10.0  
ppm (t1)

5.0

0.0

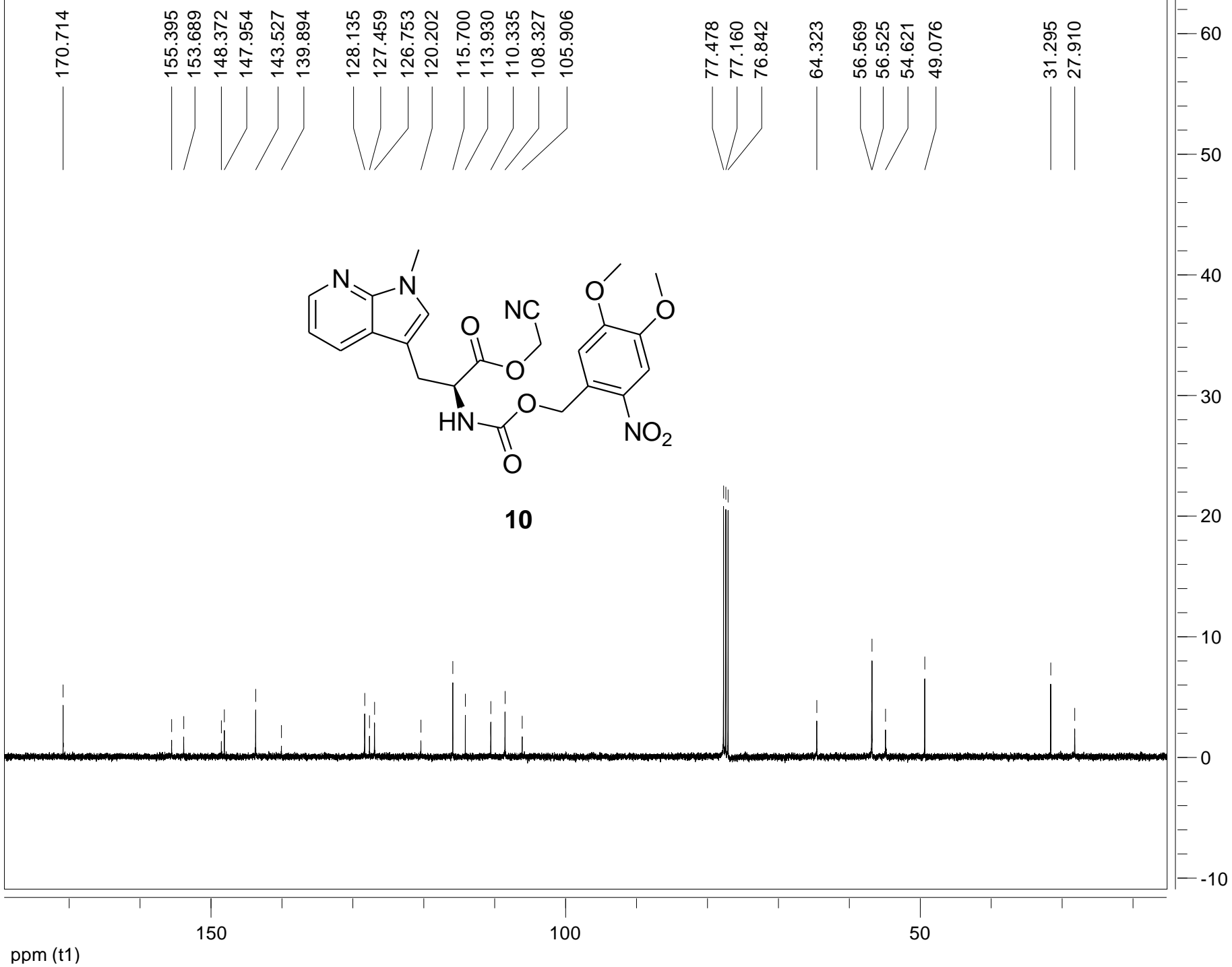
400

300

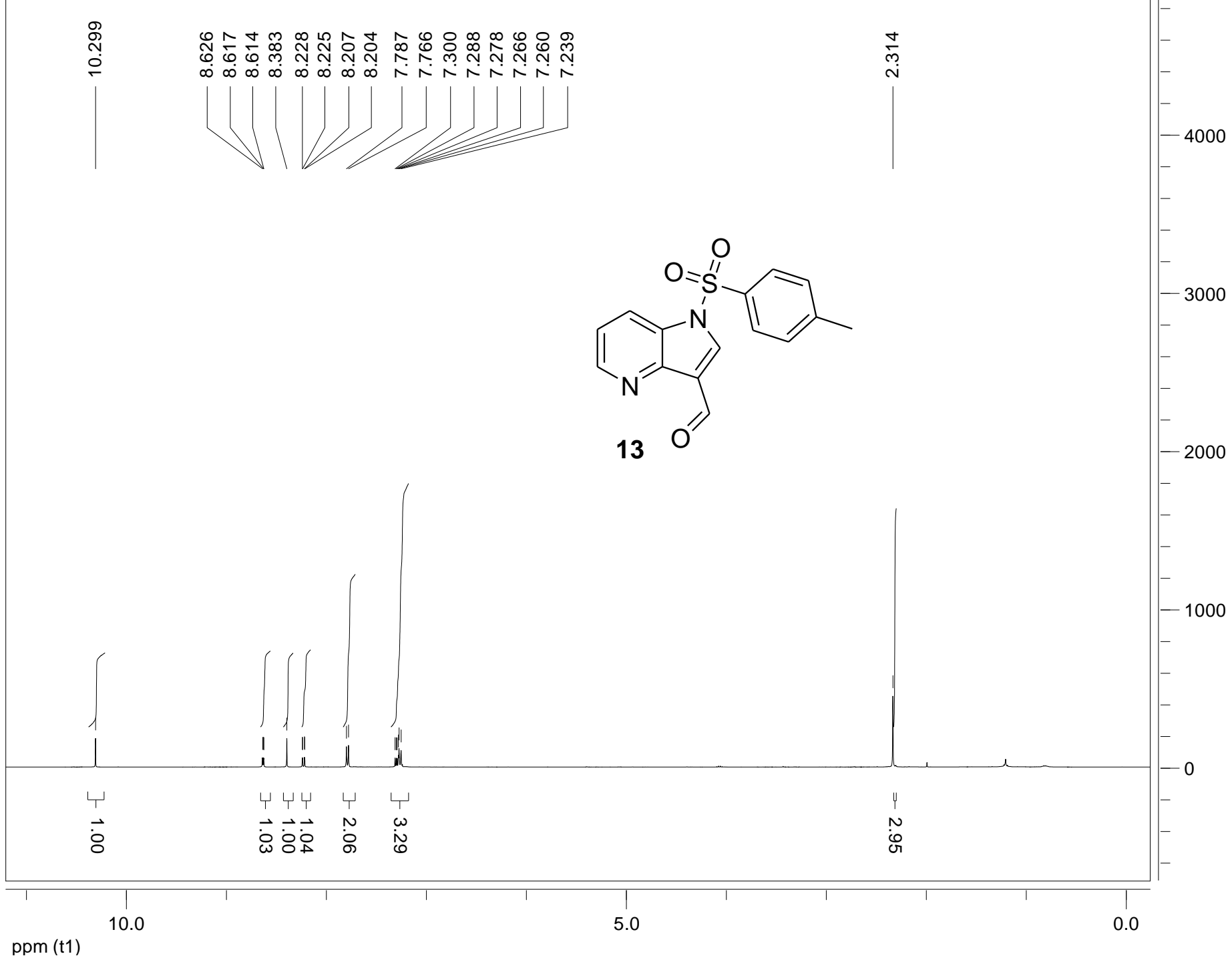
200

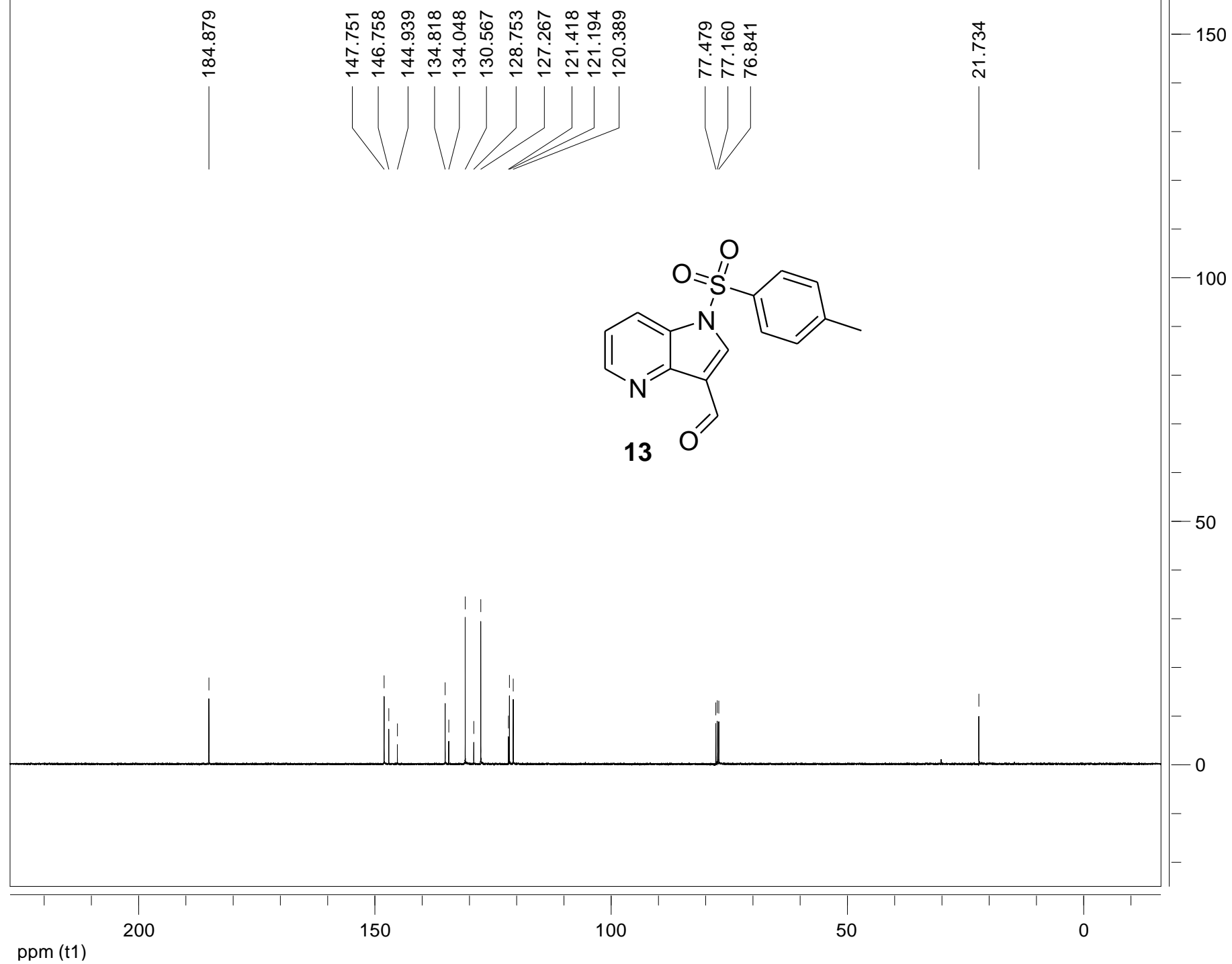
100

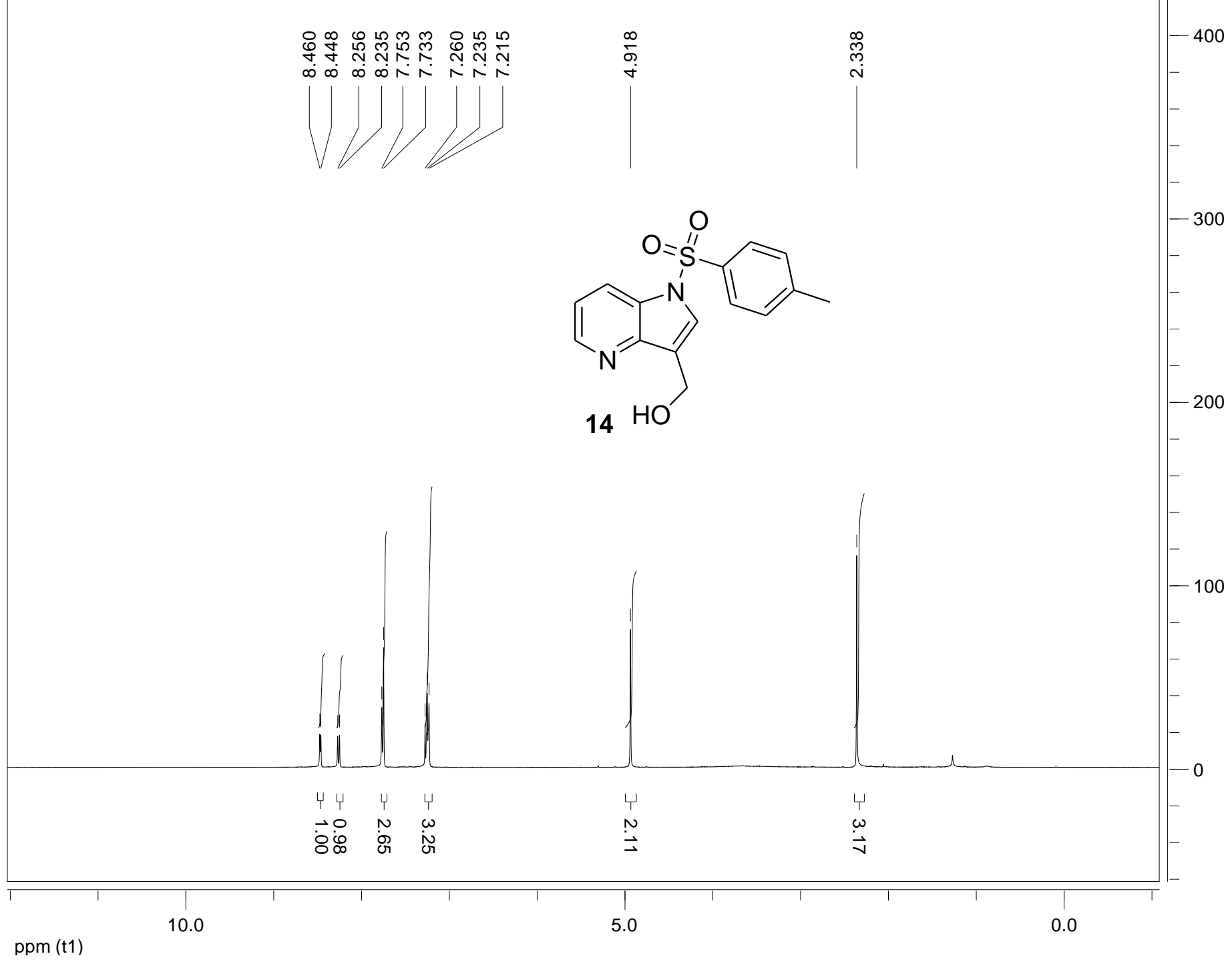
0



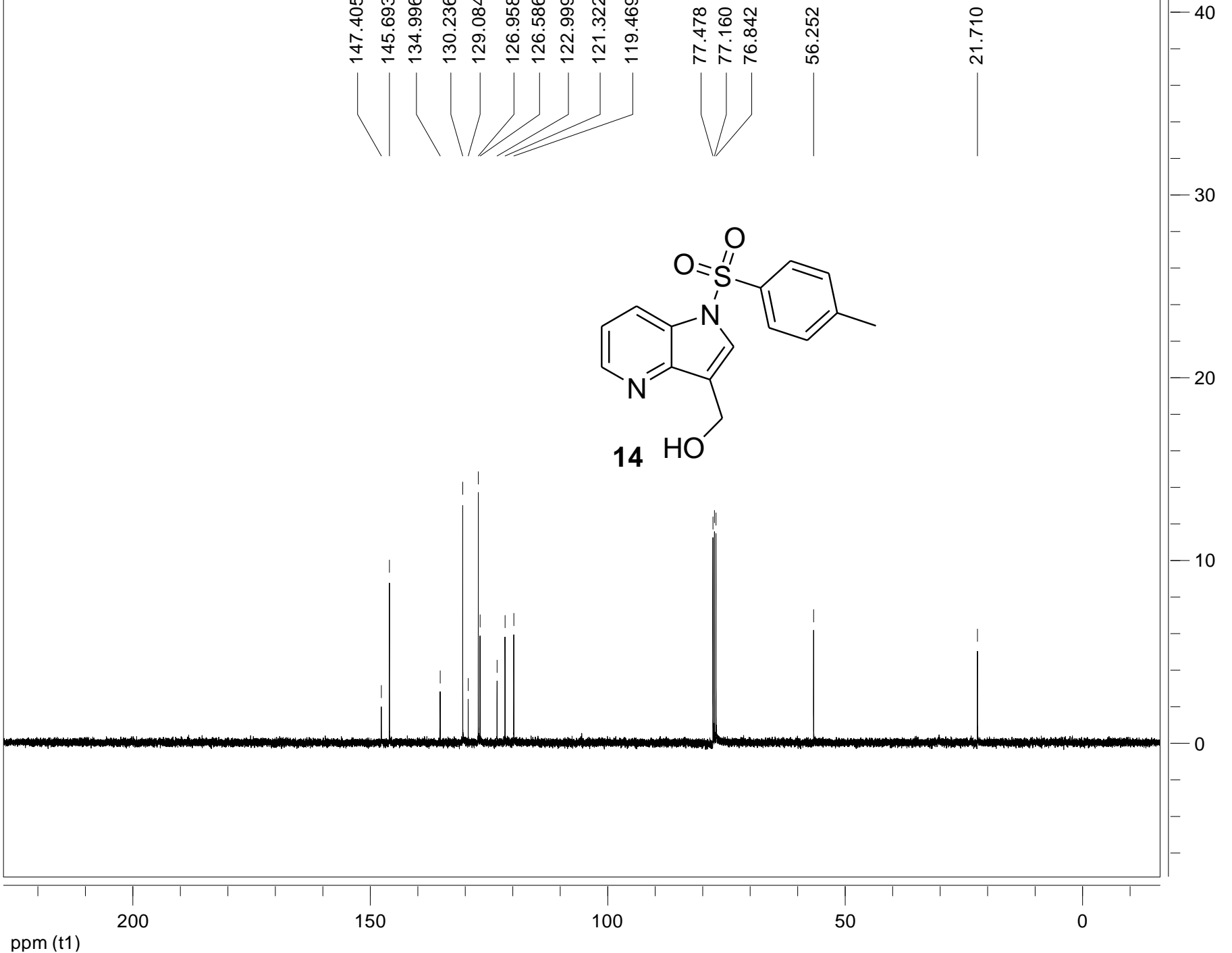
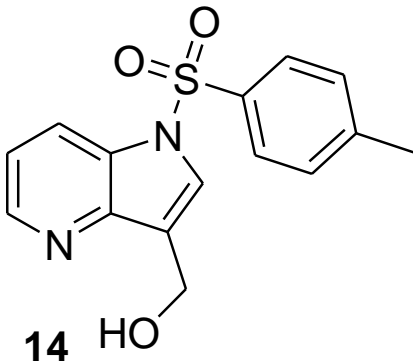


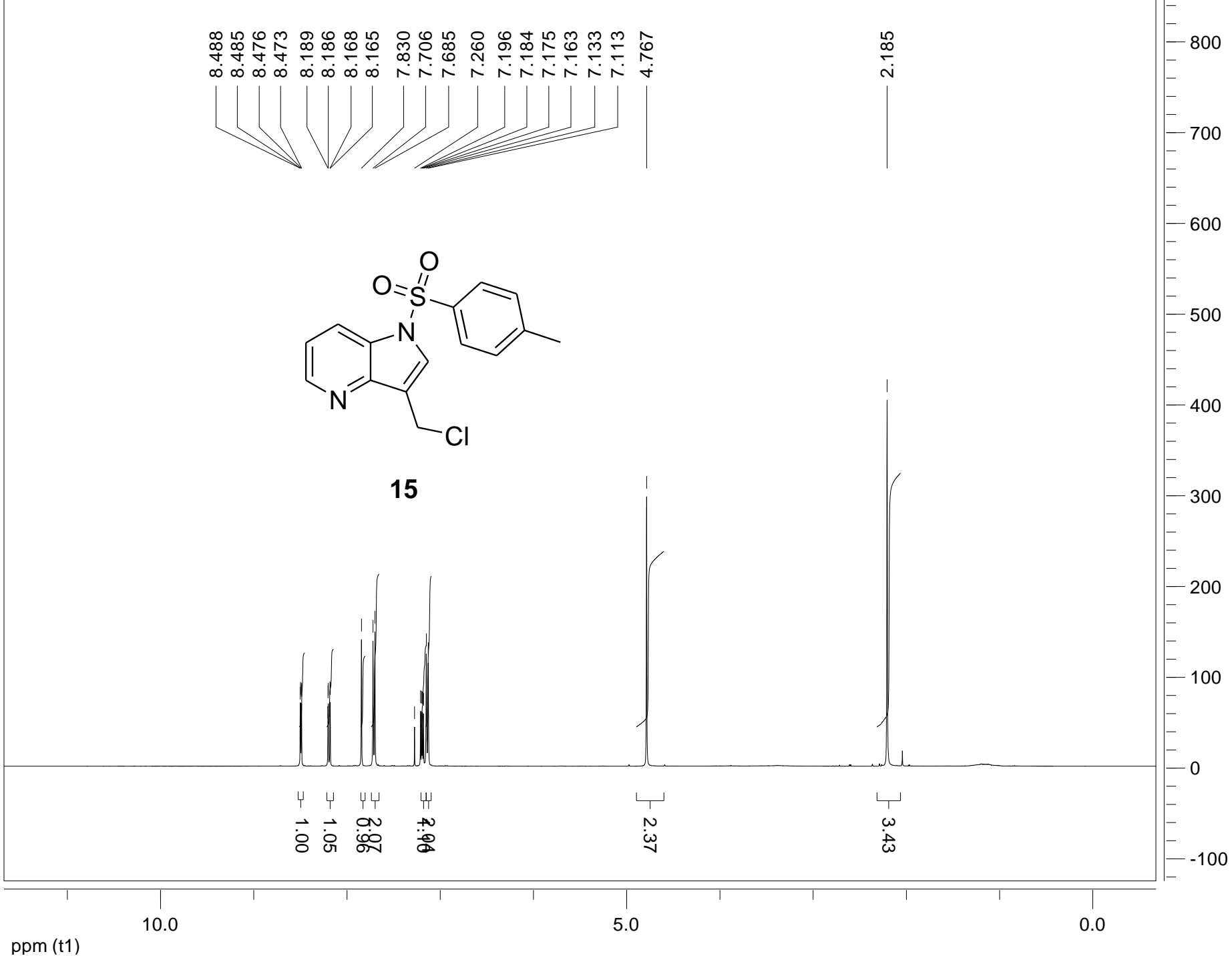


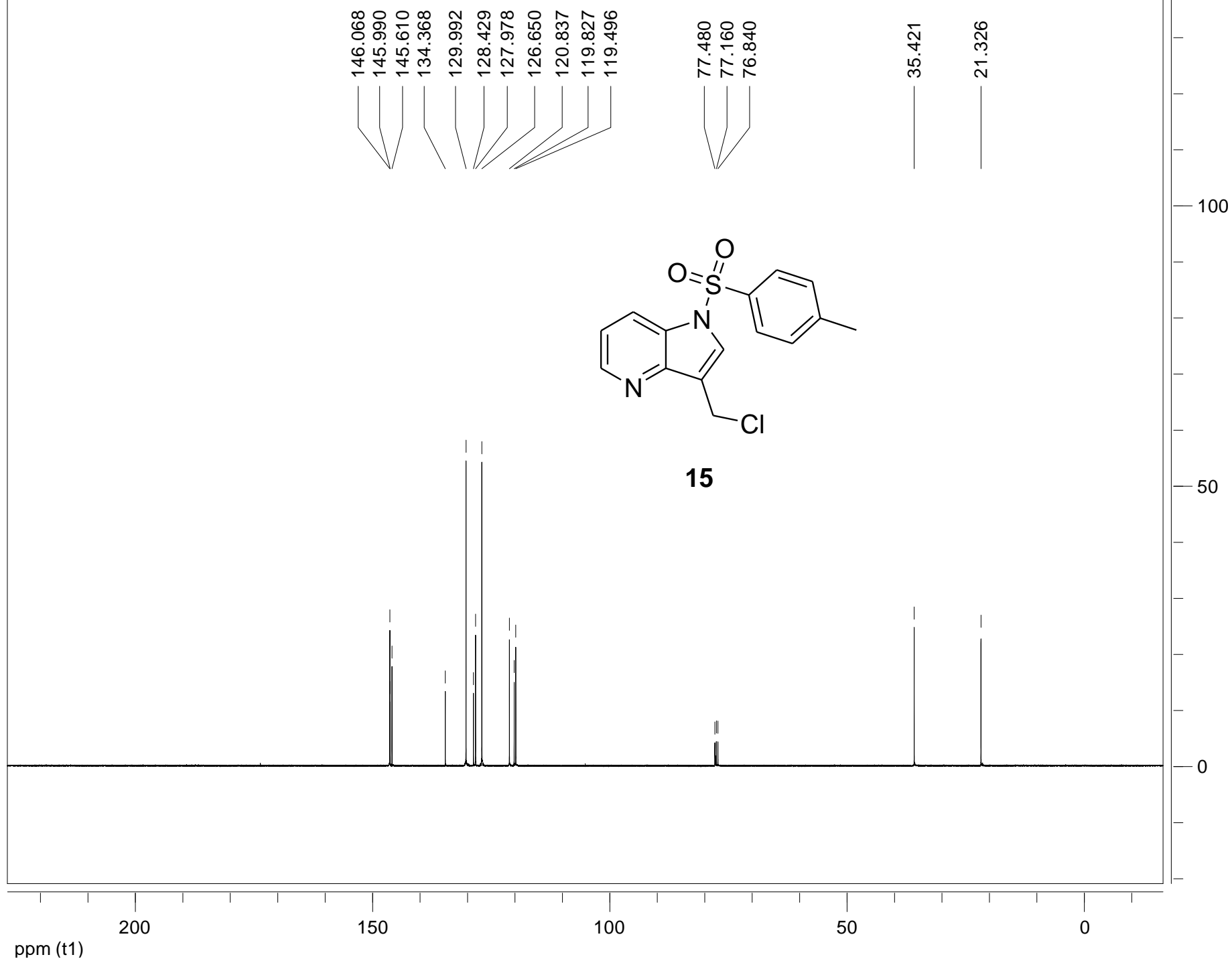


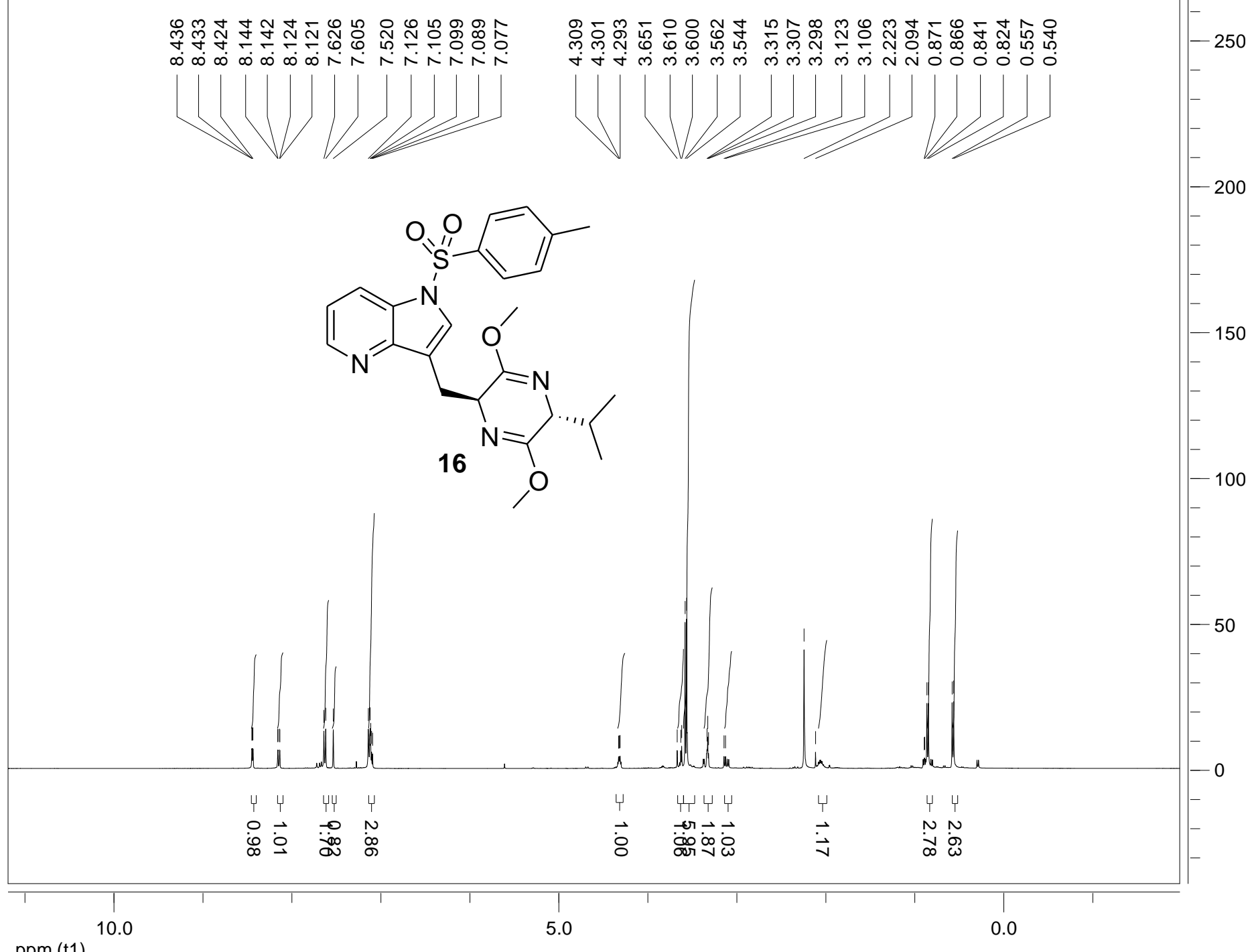


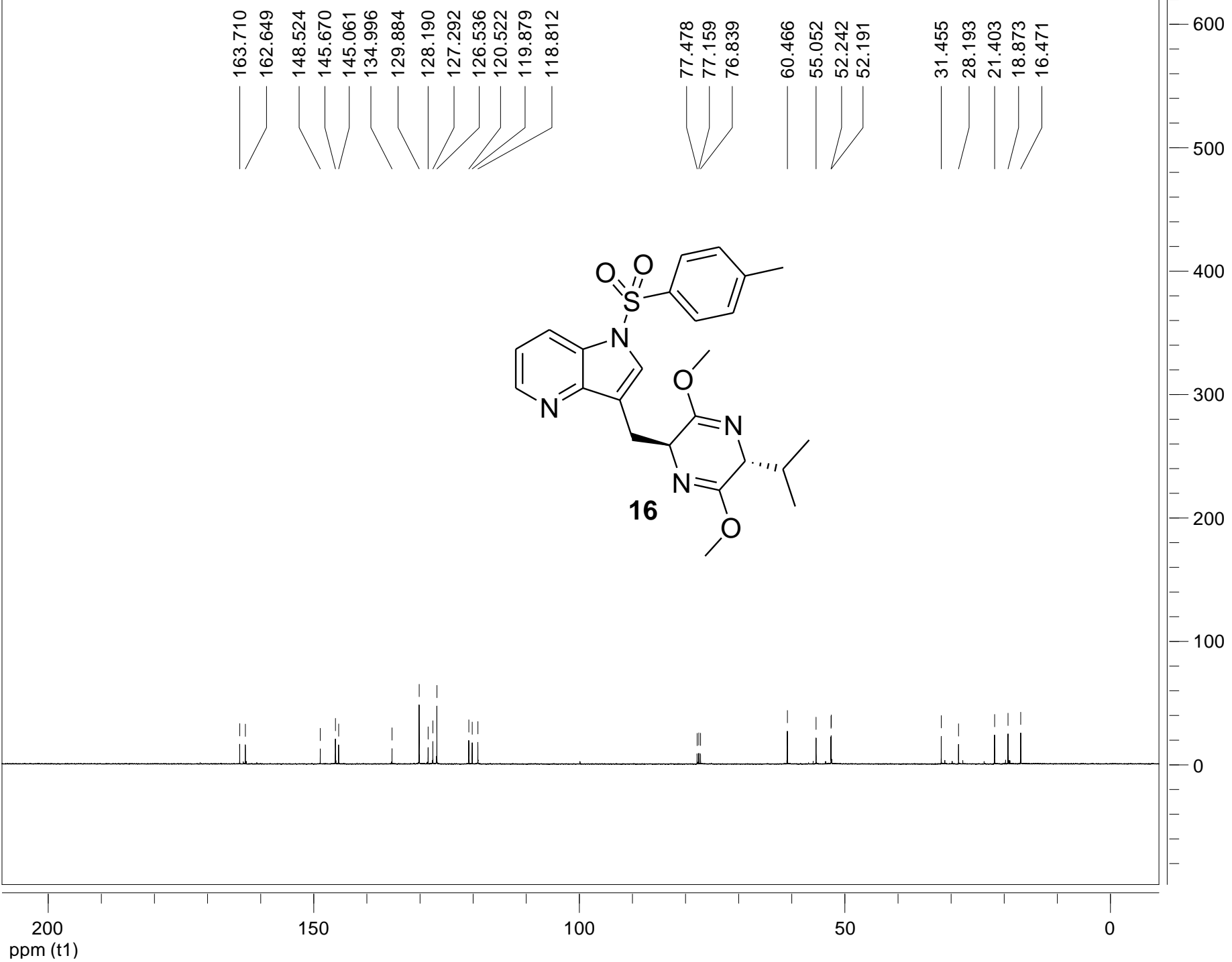
147.405  
145.693  
134.996  
130.236  
129.084  
126.958  
126.586  
122.999  
121.322  
119.469  
  
77.478  
77.160  
76.842  
  
56.252  
  
21.710











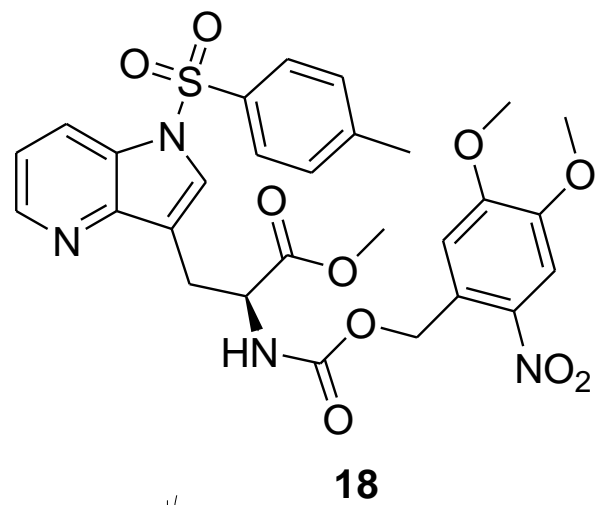
163.710  
162.649  
148.524  
145.670  
145.061  
134.996  
129.884  
128.190  
127.292  
126.536  
120.522  
119.879  
118.812

77.478  
77.159  
76.839  
60.466  
55.052  
52.242  
52.191  
31.455  
28.193  
21.403  
18.873  
16.471



8.476  
8.465  
8.207  
8.187  
7.789  
7.771  
7.676  
7.676  
7.656  
7.621  
7.611  
7.262  
7.228  
7.216  
7.202  
7.181  
6.928  
5.573  
5.533  
5.375  
5.335  
4.620  
4.604  
3.855  
3.720  
3.533  
3.280  
3.265  
2.277

0.94  
0.98  
3.47  
2.64  
0.90  
1.00  
0.93  
0.97  
2.96  
2.44  
2.88  
1.79  
2.79



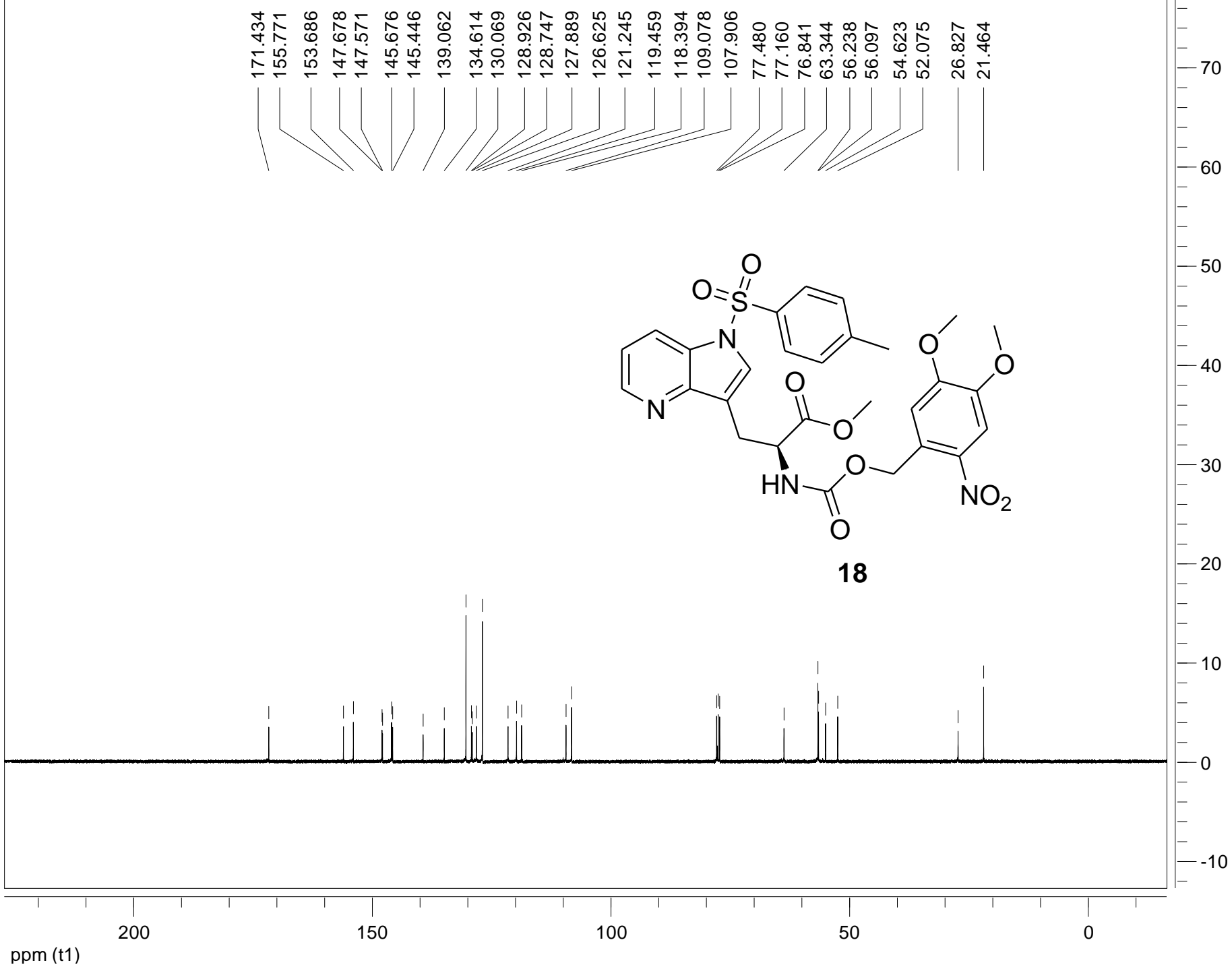
10.0  
ppm (t1)

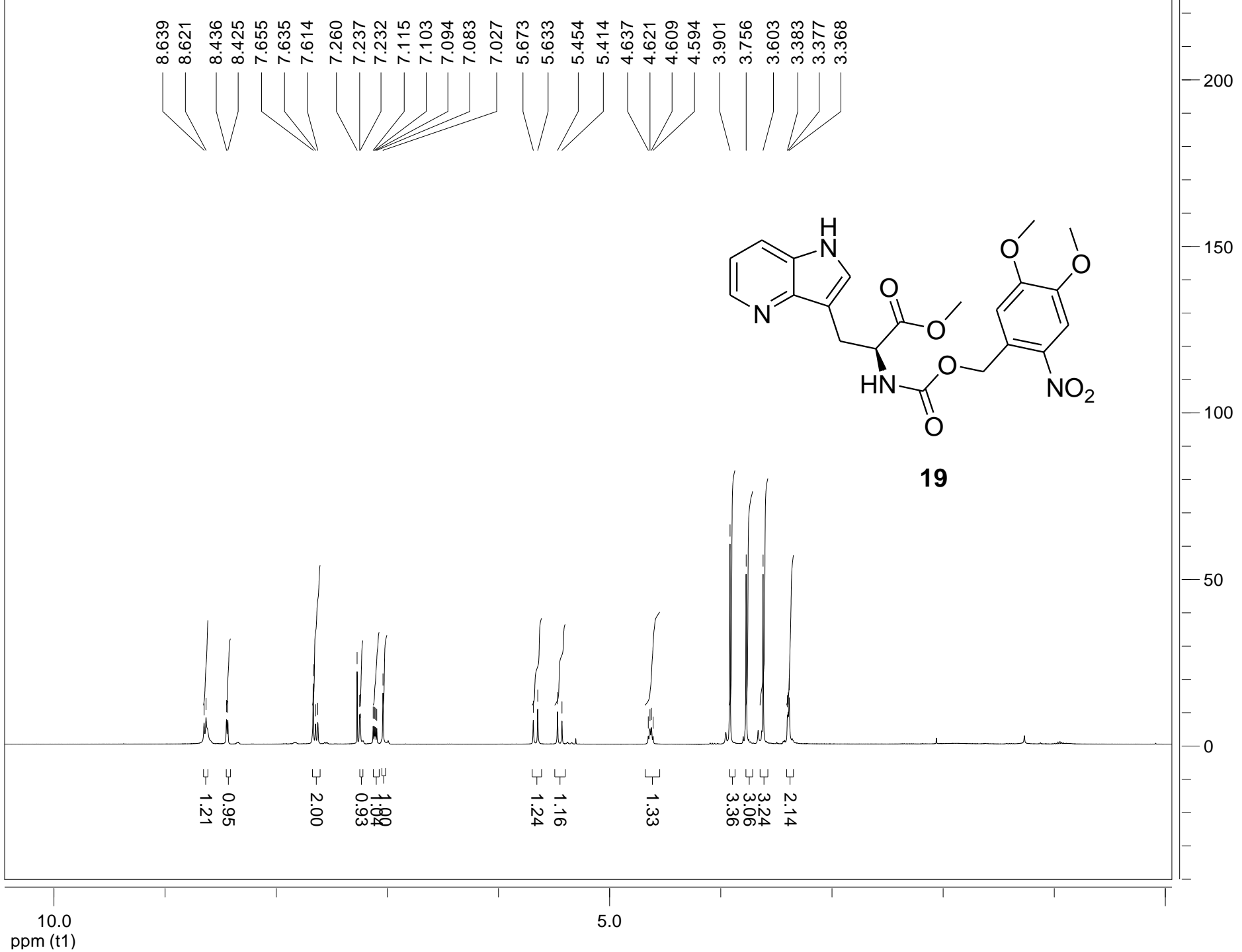
5.0

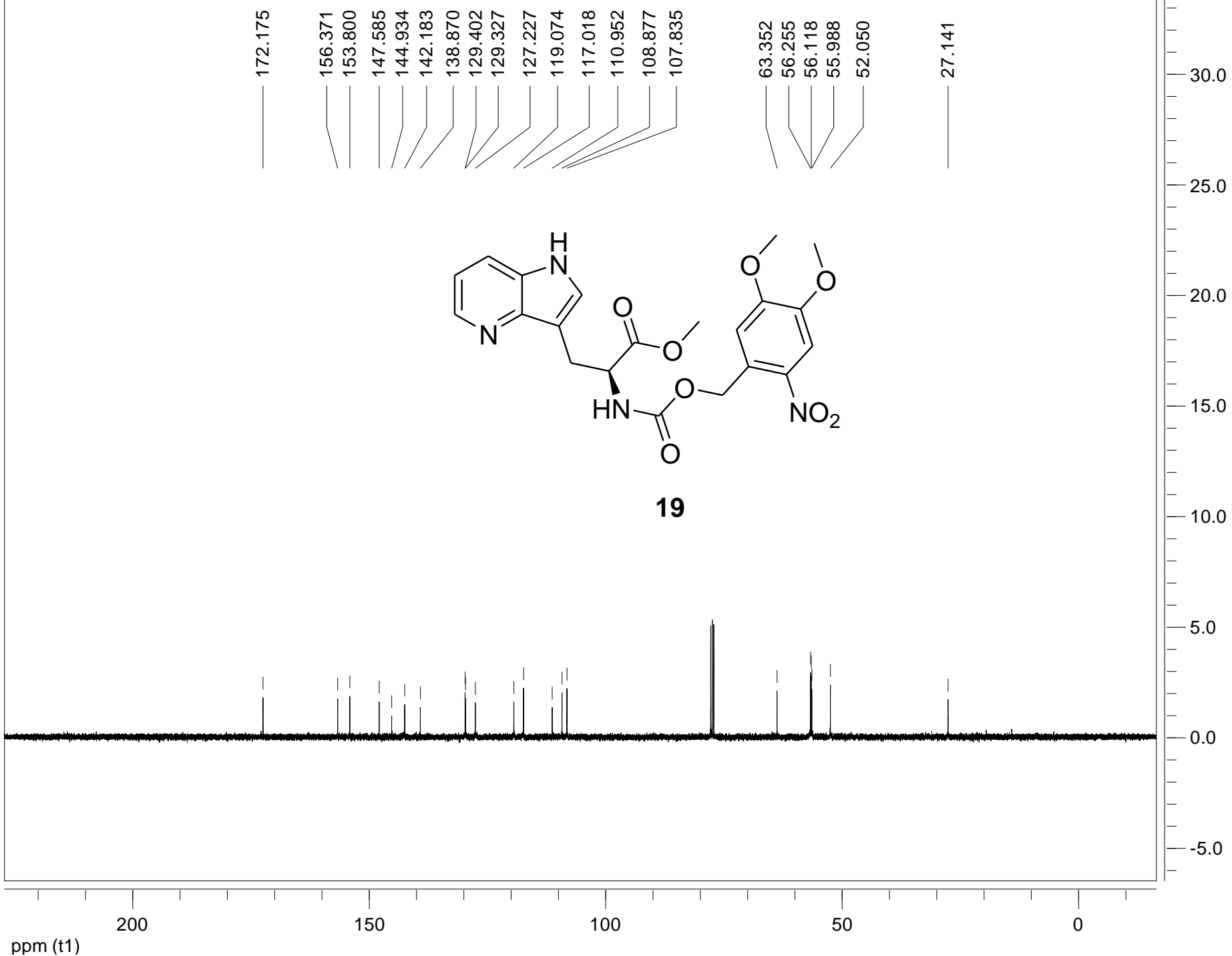
0.0

500

0



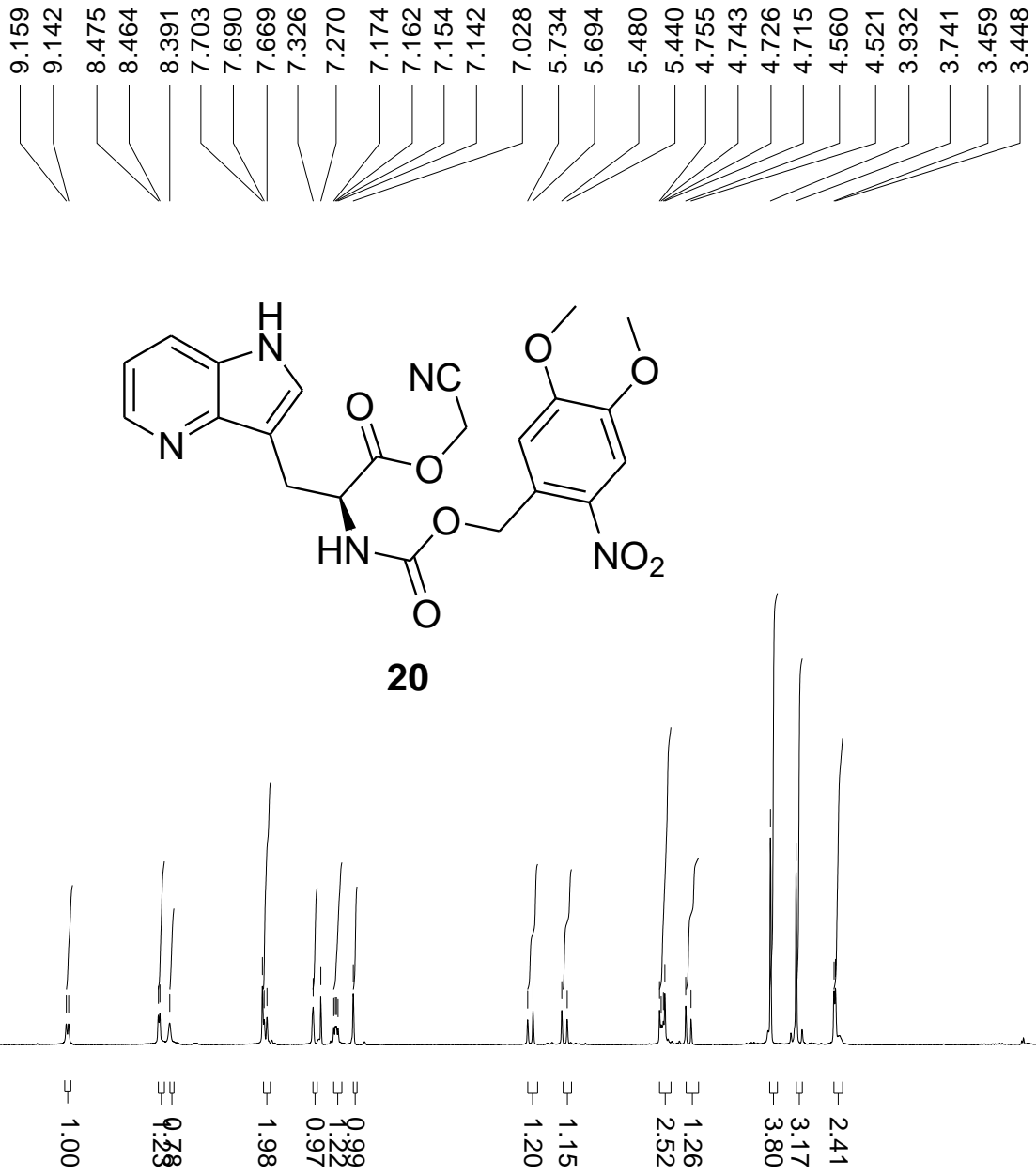


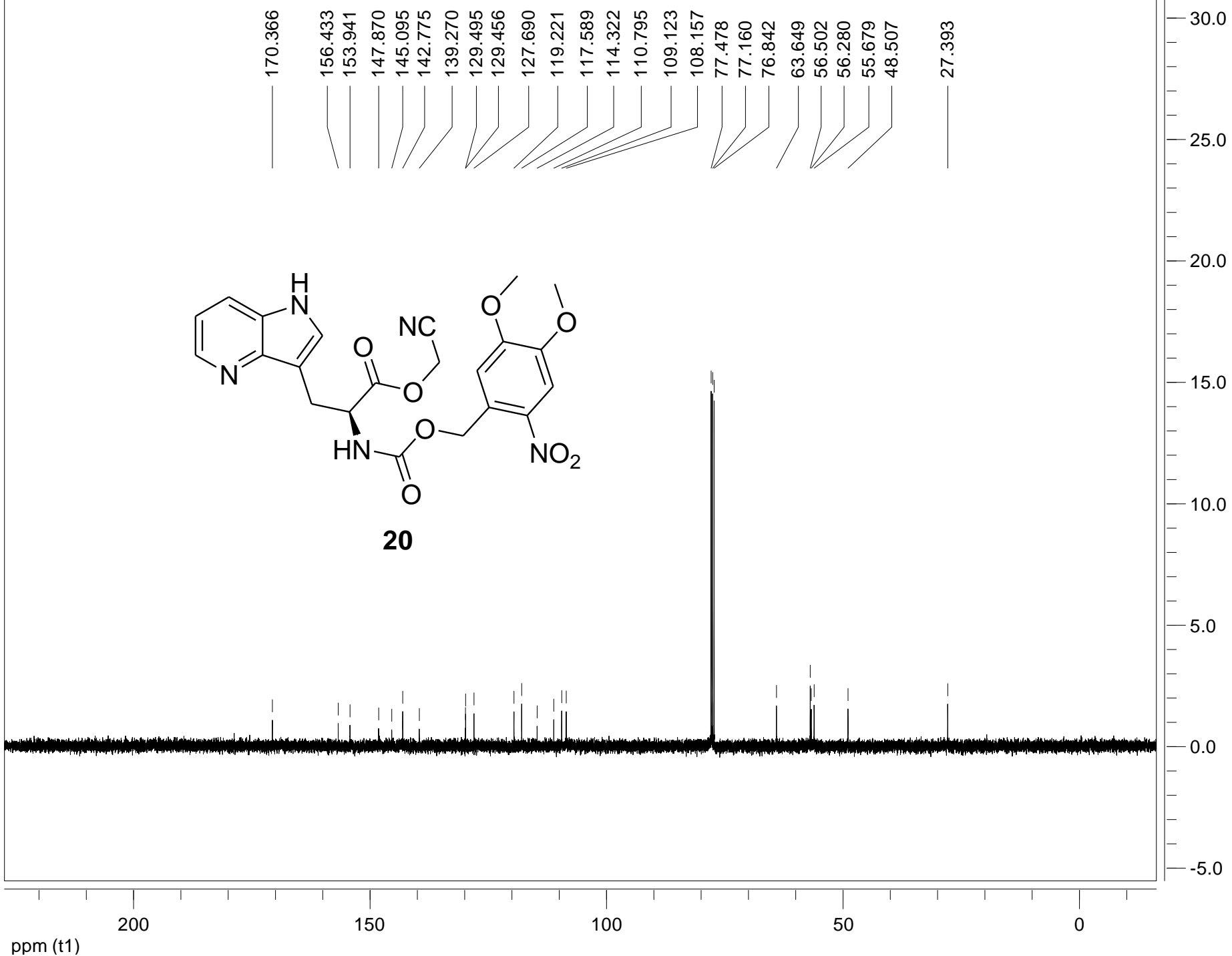
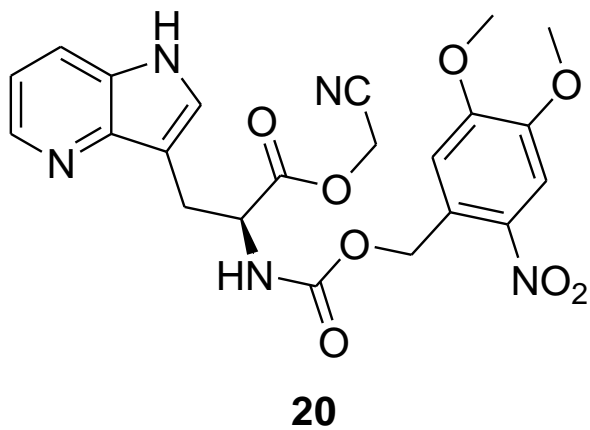


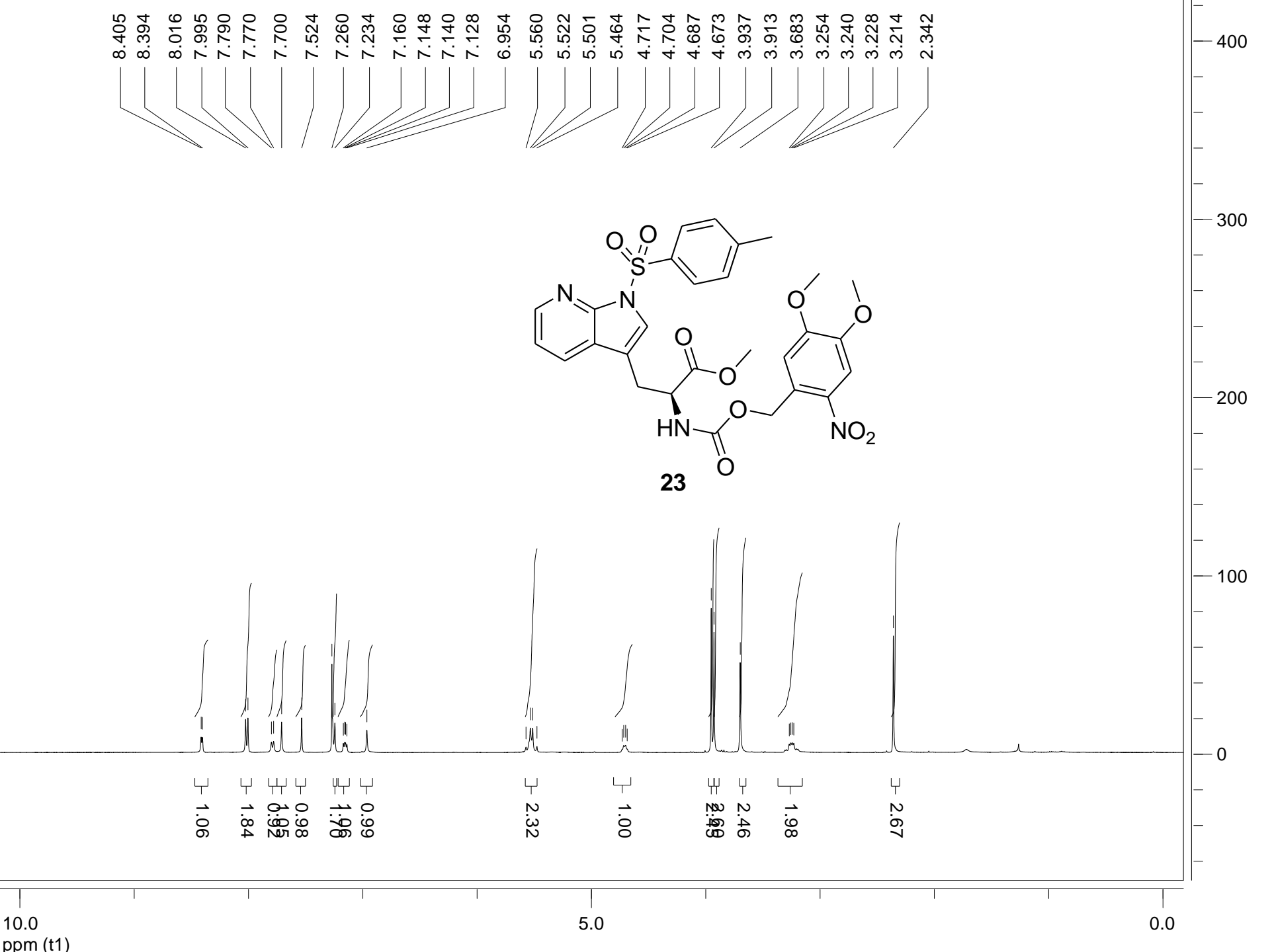
ppm (t1)

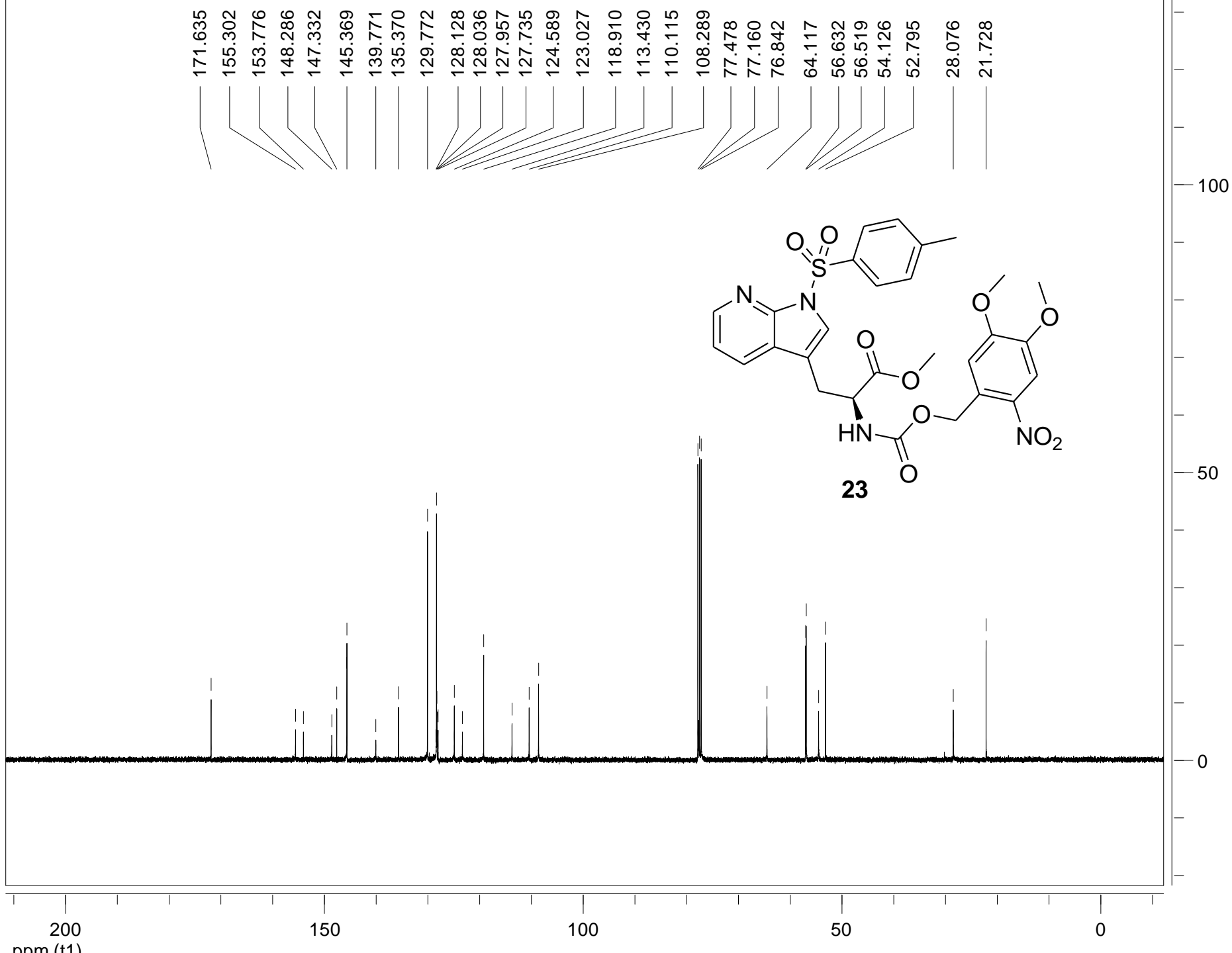
10.0

5.0

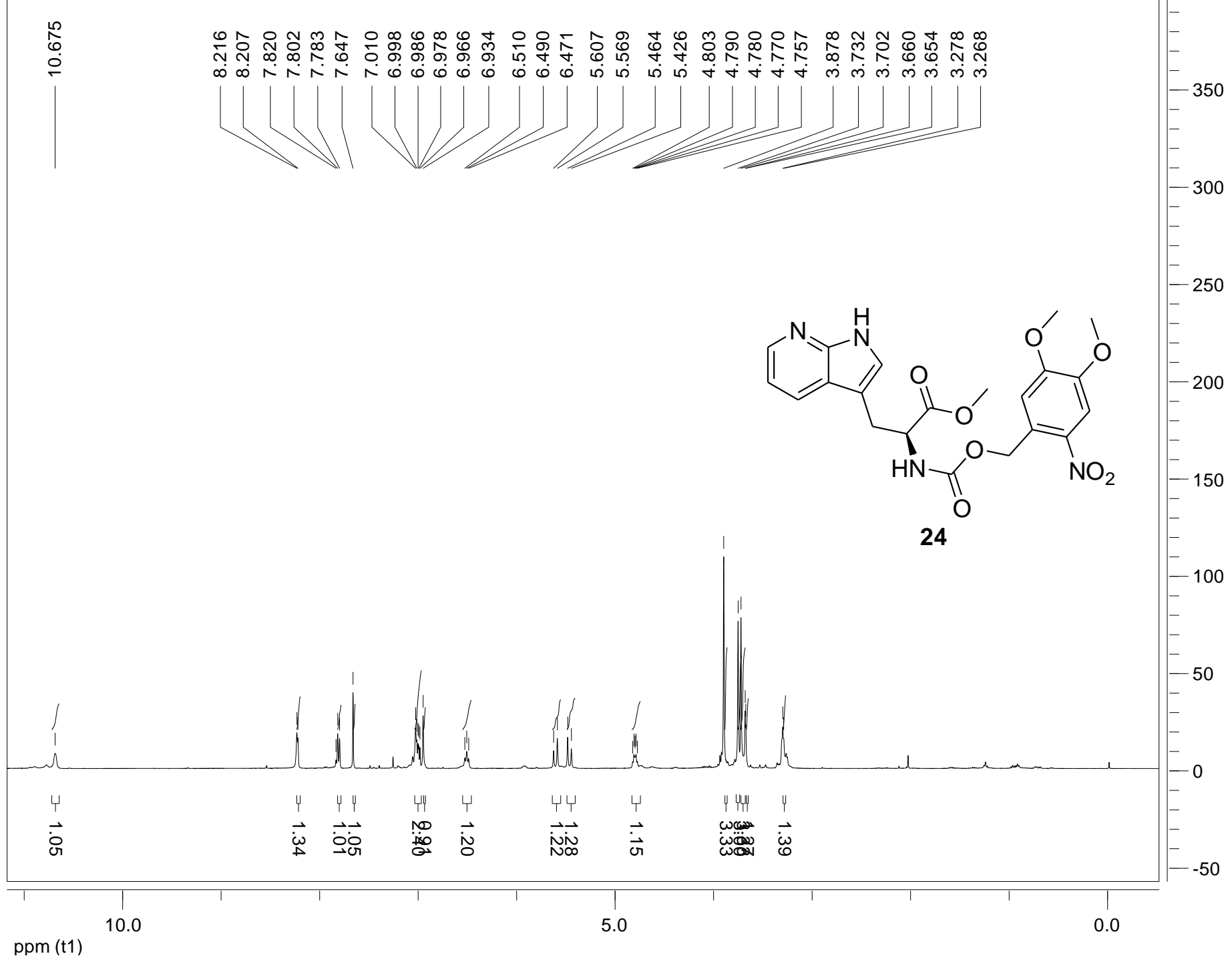


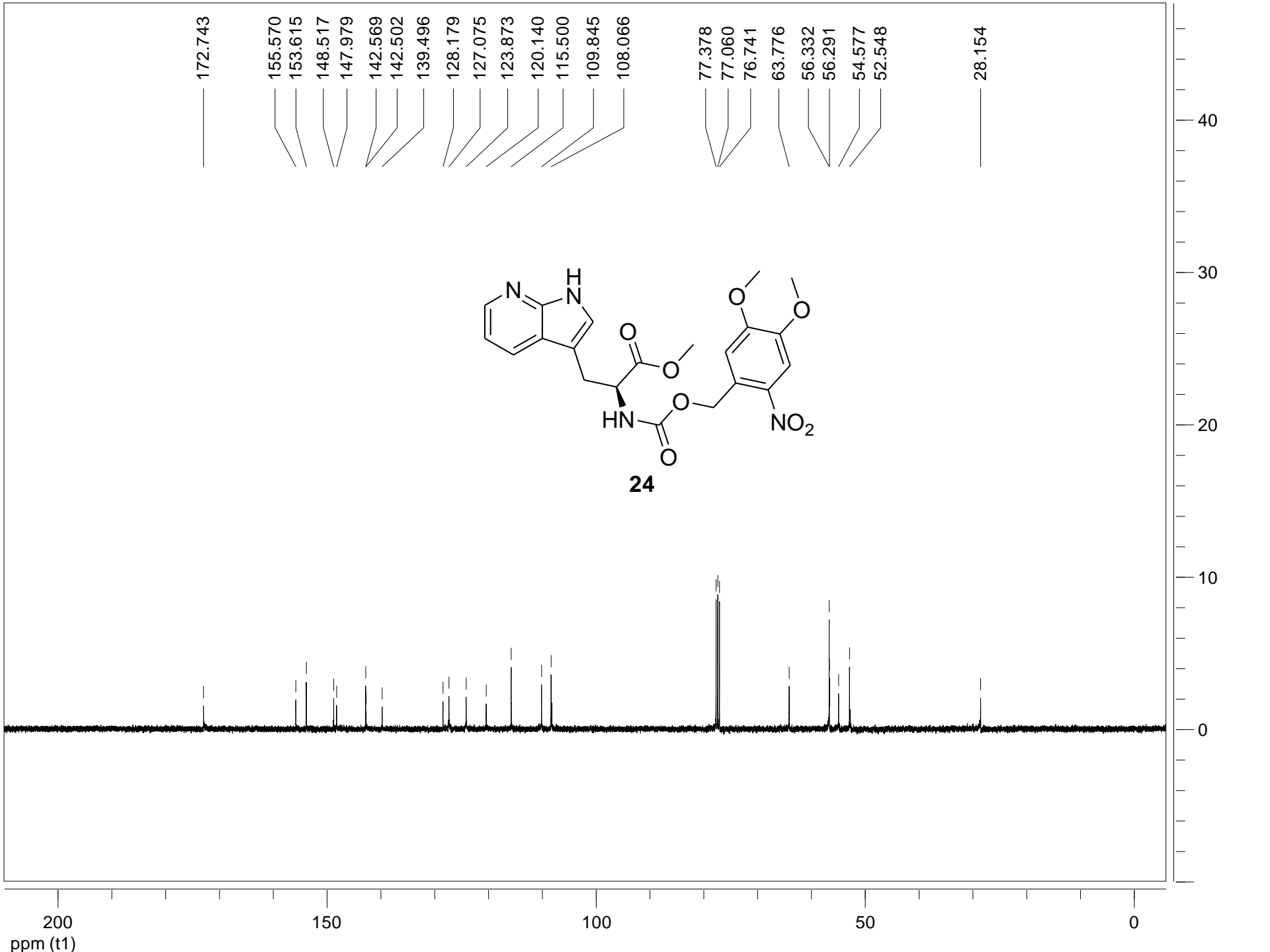












172.743

155.570

153.615

148.517

147.979

142.569

142.502

139.496

128.179

127.075

123.873

120.140

115.500

109.845

108.066

77.378

77.060

76.741

63.776

56.332

56.291

54.577

52.548

28.154

200

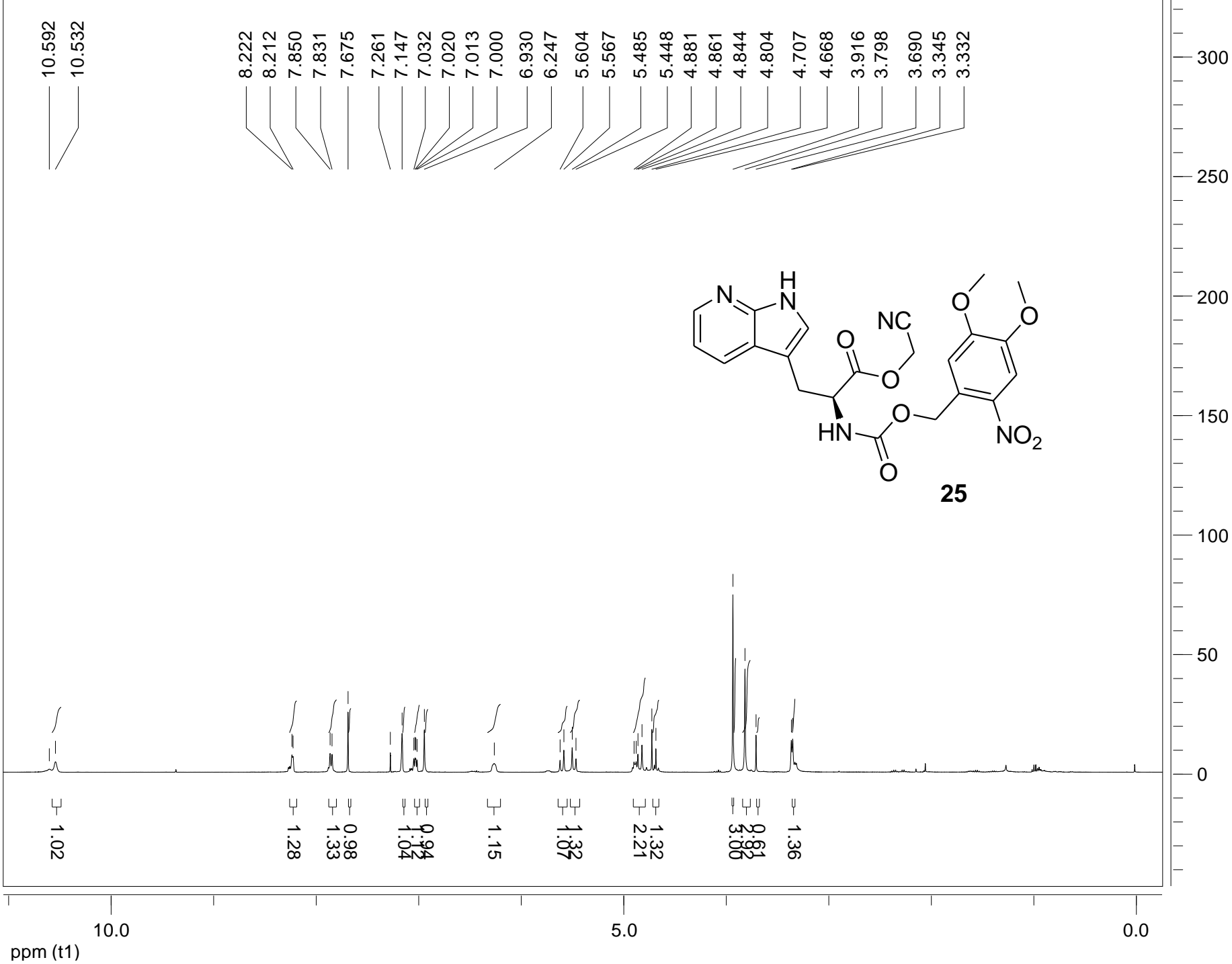
150

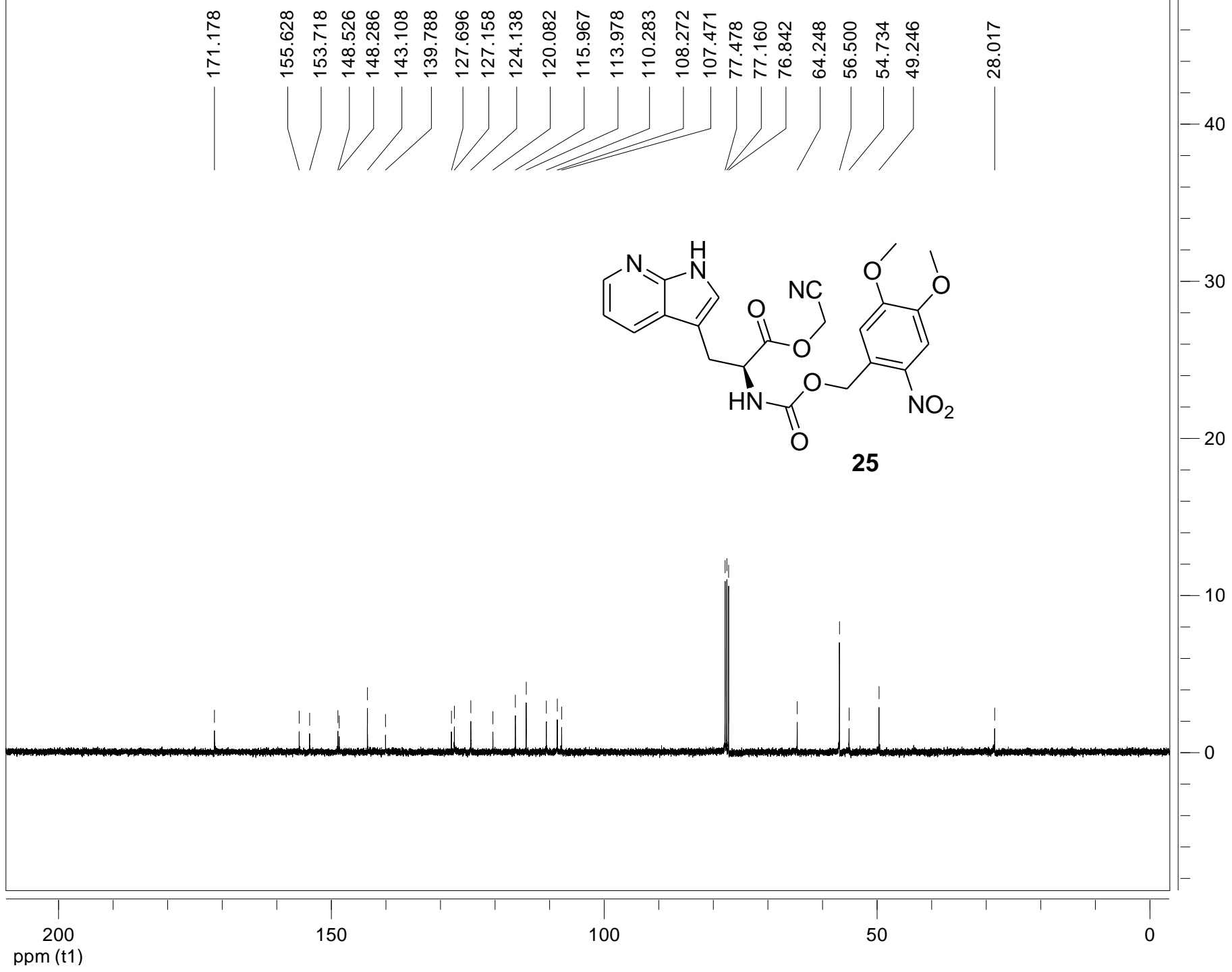
100

50

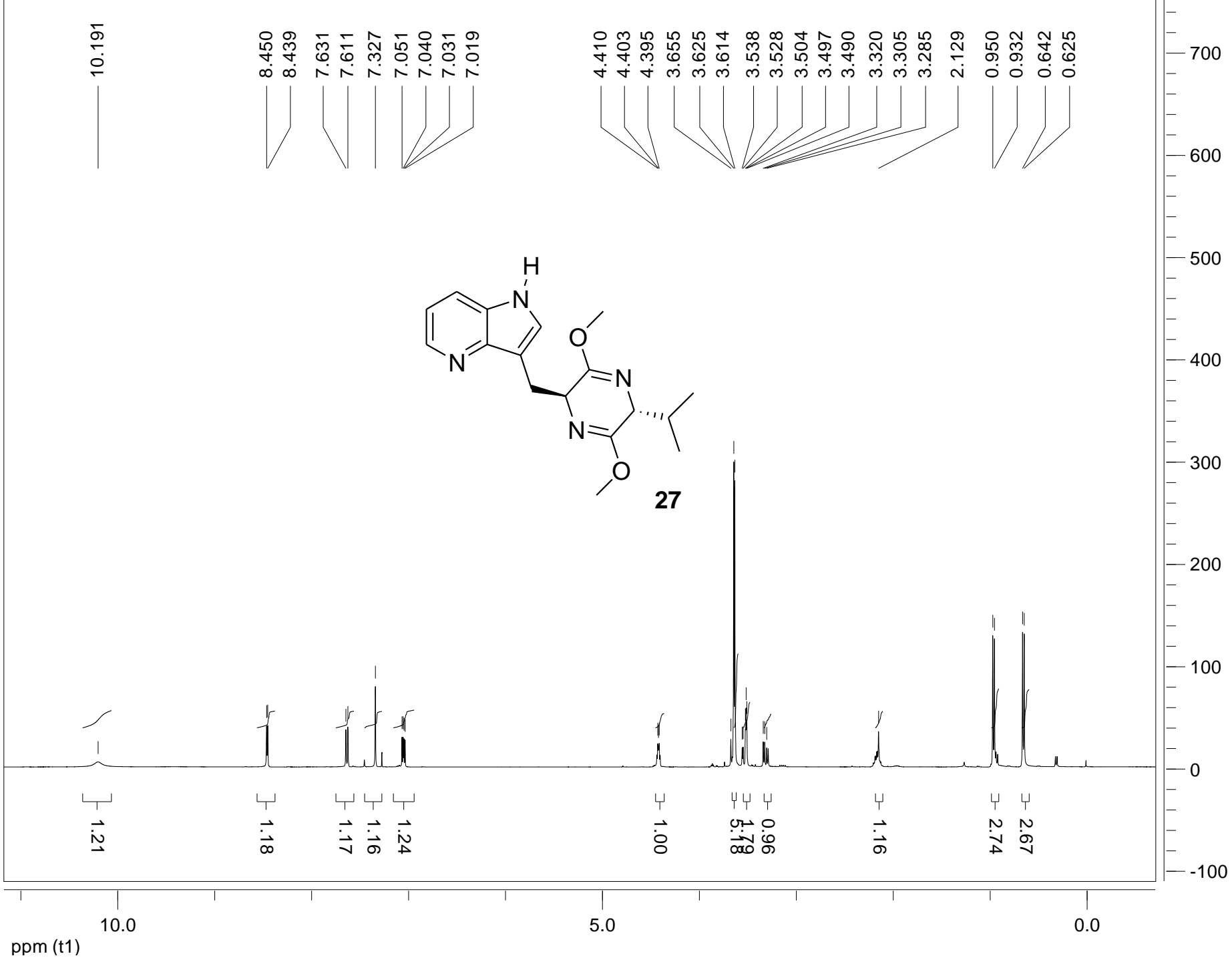
0

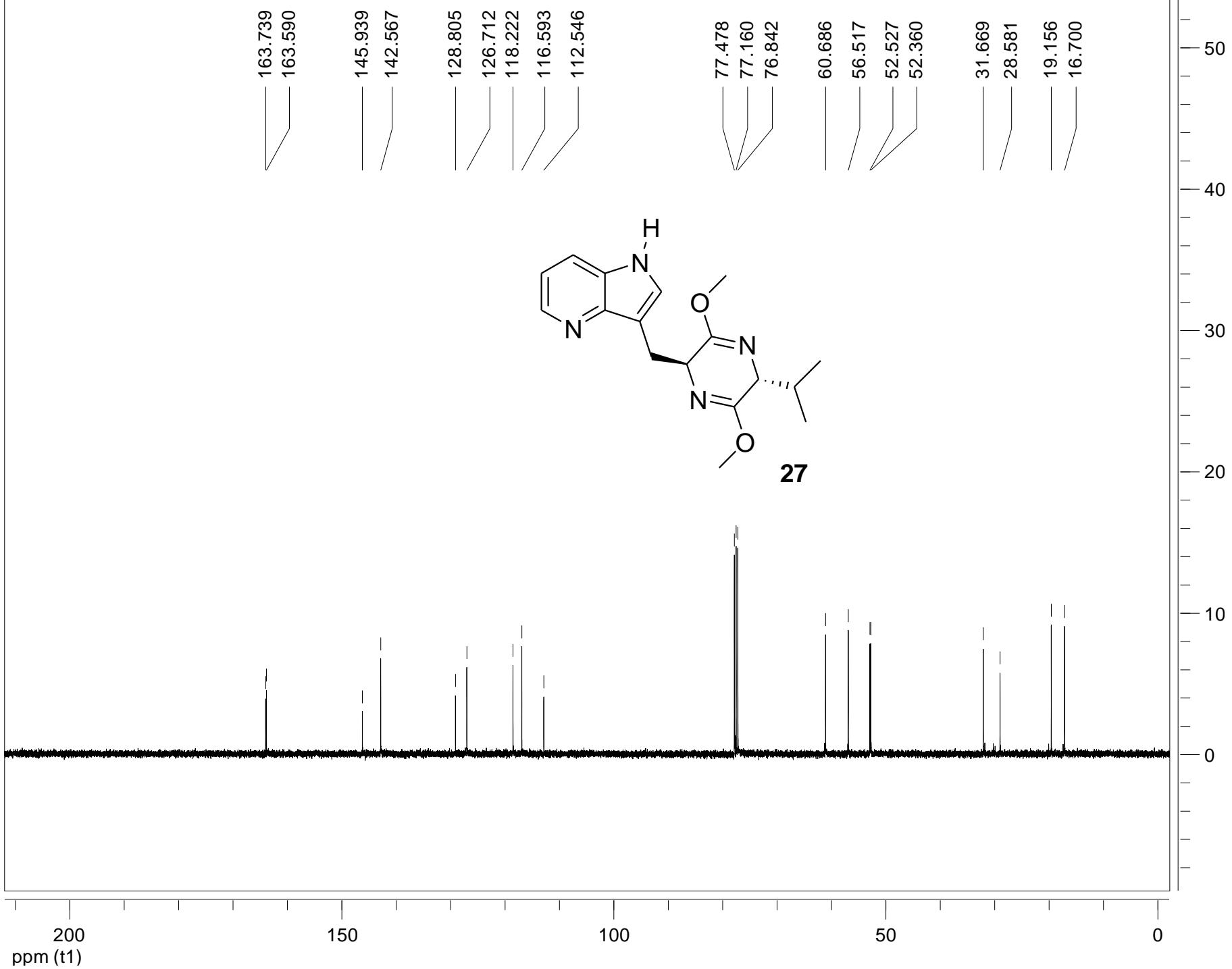
ppm (t1)



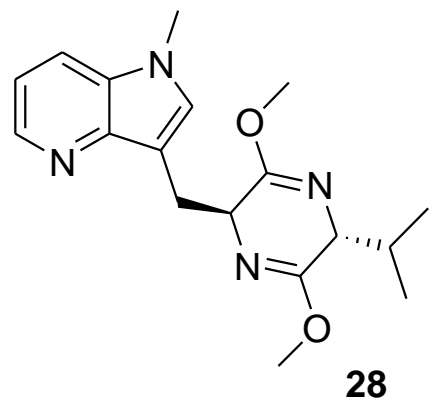


- 171.178
- 155.628
- 153.718
- 148.526
- 148.286
- 143.108
- 139.788
- 127.696
- 127.158
- 124.138
- 120.082
- 115.967
- 113.978
- 110.283
- 108.272
- 107.471
- 77.478
- 77.160
- 76.842
- 64.248
- 56.500
- 54.734
- 49.246
- 28.017





8.417 8.406  
 7.482 7.462  
 7.057 7.037 7.025 7.016 7.005  
 4.327 4.319 4.310 3.684 3.655 3.609 3.597 3.589 3.544 3.534 3.508 3.498 3.195 3.178 3.159 3.142 2.164 2.156 2.147 2.139 2.130 2.122 0.956 0.939 0.634 0.617



1.00 1.04 1.94 1.07 3.89 3.11 1.09 1.16 2.98 2.84

ppm (t1)

5.0

0.0

600  
500  
400  
300  
200  
100  
0

