

## **Supplemental Materials**

### **Supplemental Figure Legends**

**Supplemental Figure 1** – Kaplan-Meier curve for freedom from HF in all participants. Kaplan-Meier curve for freedom from HF in all participants after stratification by QT<sub>corr</sub> percentiles at baseline (p<0.001)

**Supplemental Figure 2** – Kaplan-Meier curve for freedom from CVD in all participants. Kaplan-Meier curve for freedom from CVD in all participant after stratification by QT<sub>corr</sub> percentiles at baseline (p<0.001)

**Supplemental Figure 3** – Kaplan-Meier curve for freedom from Stroke events in all participants. Kaplan-Meier curve for freedom from Stroke events in all participants after stratification by QT<sub>corr</sub> percentiles at baseline (p<0.001)

**Supplemental Table 1** - Baseline Characteristics for all patients and after stratification by short QT<sub>b</sub> at ≤ 390 ms, or QT<sub>b</sub> prolongation at ≥460 ms

	Total	QT <sub>b</sub> ≤390 ms (n=500)	QT <sub>b</sub> >390 ms (n=5773)	P value	QT <sub>b</sub> ≥460 ms (n=173)	QT <sub>b</sub> <460 ms (n=6100)	P value
Age, years	61.7±10.14	58.6±10.0	62.0±10.1	<0.001	62.0±9.9	61.7±10.1	0.749
Gender, % Female	53.4	19.9	56.3	<0.001	83.7	52.6	<0.001
Race, %							
Caucasian	38.3	32.0	38.9	0.030	36.6	38.4	0.750
African American	27.5	30.7	27.1		28.8	27.4	
Chinese American	12.0	13.6	11.9		14.4	12.0	
Hispanic	22.2	23.7	22.1		20.2	22.2	
Hypertension, %	43.8	69.0	55.1	<0.001	59.0	43.4	<0.001
Participants on antihypertensive medications, %	36.0	72.0	63.3	<0.001	48.6	35.6	<0.001
Systolic blood pressure, mmHg	126.3±21.45	120.9±20.1	126.8±21.5	<0.001	131.3±22.3	126.2±21.4	0.002
Heart Rate, beats/min	63.1±9.59	55.6±7.1	63.7±9.5	<0.001	72.9±10.6	62.8±9.4	<0.001
Diabetes, %	11.1	6.8	11.4	0.001	21.4	10.8	<0.001
Family History of Heart Disease, %	42.6	42.9	39.8	0.205	46.1	42.5	0.354
Current Smoking, %	13.1	14.6	12.9	0.015	16.8	13.0	0.032
QRS duration, ms	91.4±9.66	91.9±9.4	91.4±9.7	0.229	92.2±9.4	91.3±9.7	0.263
QT duration, ms	410.7±30.25	396.8±25.3	411.9±30.3	<0.001	432.4±34.4	410.1±29.9	<0.001
QT <sub>b</sub> duration, ms	417.2±20.61	378.8±10.1	420.6±17.7	<0.001	471.8±11.5	415.7±18.6	<0.001
QT <sub>corr</sub> duration, ms	410.7±17.79	381.0±11.5	413.3±15.8	<0.001	450.9±16.2	409.6±16.5	<0.001
QT <sub>fr</sub> duration, ms	414.8±18.9	381.8±11.0	417.7±16.6	<0.001	456.8±16.9	413.6±17.5	<0.001
Height, cm	166.2±10.04	170.3±9.6	165.8±10.0	<0.001	162.3±9.4	166.3±10.0	<0.001
Weight, lbs	172.8±38.16	172.5±34.8	172.8±38.4	0.831	177.1±41.7	172.7±38.1	0.133
Body Mass Index, kg/m <sup>2</sup>	28.3±5.47	26.9±4.4	28.4±5.5	<0.001	30.4±6.4	28.2±5.4	<0.001
Low-density Lipoprotein Cholesterol, mg/dL	117.6±31.43	118.2±30.9	117.5±31.5	0.663	114.1±31.7	117.7±31.4	0.145
High-density Lipoprotein Cholesterol, mg/dL	51.1±14.81	48.8±13.9	51.3±14.9	<0.001	51.9±14.1	51.0±14.8	0.444
Aspirin, %	31.0	28.4	31.2	0.314	28.9	31.0	0.755
Statins, %	14.4	13.0	14.6	0.336	20.2	14.3	0.028
Education (Graduate) %	17.8	17.4	22.8	0.005	12.7	17.9	0.156

QT<sub>corr</sub> = QT interval corrected for R-R interval, race, age and sex; QT<sub>b</sub> = QT corrected using Bazett formula; QT<sub>fr</sub> = QT interval corrected using the Framingham formula.

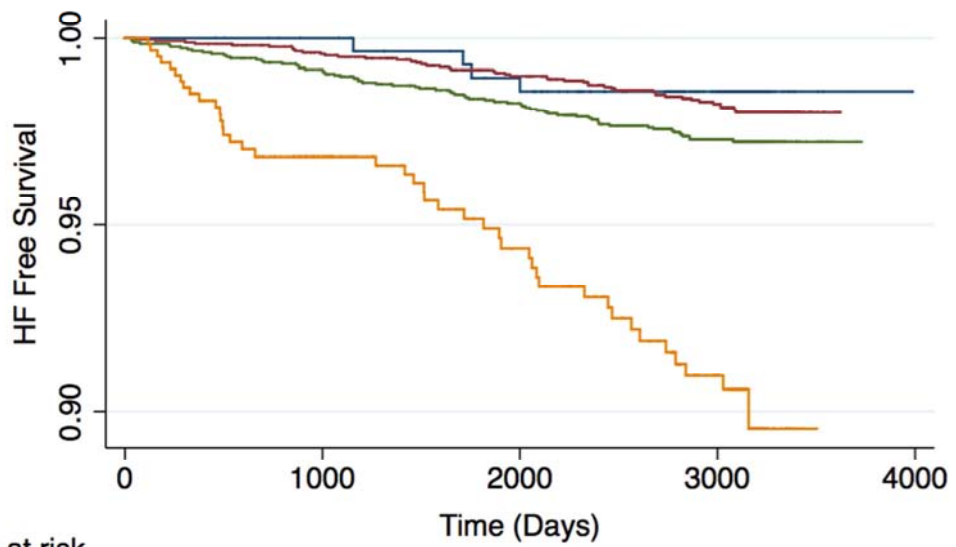
**Supplemental Table 2** - The association of baseline QT<sub>corr</sub> interval with incident CVD events with adjustment for left ventricular mass in the subset of participants with MRI data.

Event	No. Events/ No. at risk	Hazard Ratio* (per 10 ms)	95% CI	P value
Stroke	29/2604	1.21	0.99-1.48	0.061
MI	40/2604	1.17	0.98-1.40	0.087
HF	26/2604	1.25	1.00-1.55	0.051
PVD	19/2604	1.23	0.95-1.59	0.114
CHD	40/2604	1.17	0.98-1.40	0.087
CVD §	68/2604	1.20	1.04-1.37	0.010

\* Adjusted for age, ethnicity, gender, traditional risk factors (current smoking, diabetes, family history of ischemic heart disease, LDL, HDL), QRS duration, aspirin use, statins use, BMI and education. Antihypertensive medication use and systolic blood pressure omitted due to co-linearity with left ventricular mass.

§ Cardiovascular disease: including MI, Resuscitated Cardiac Arrest, Coronary Heart Disease Death, Stroke or Stroke Death.

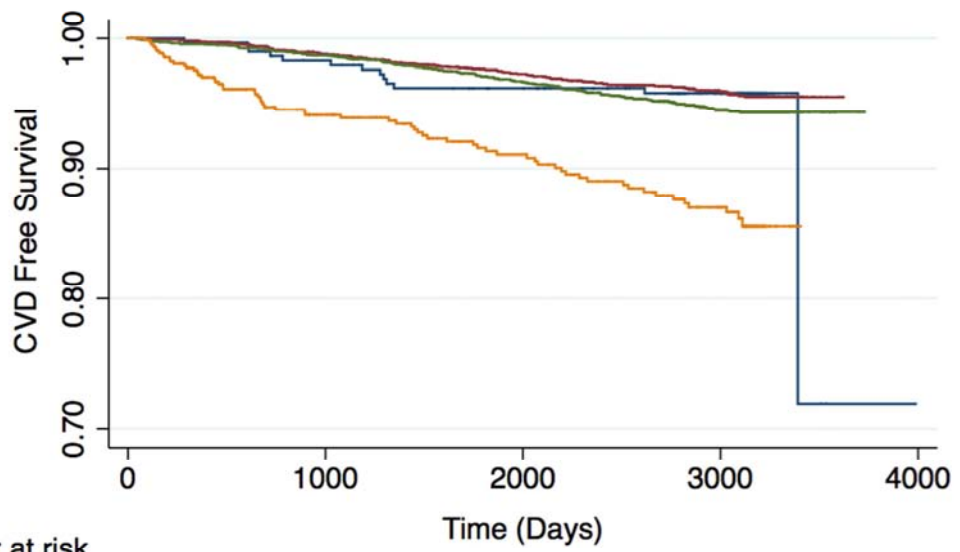
CI = confidence interval; QT<sub>corr</sub> = QT interval corrected for R-R interval, race, age and sex; MI = myocardial infarction; HF = heart failure; PVD = peripheral vascular disease; CVD = cardiovascular disease.



**Number at risk**

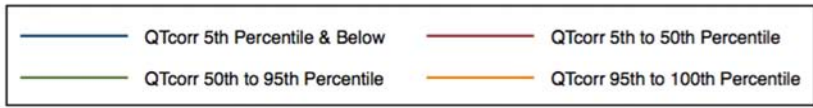
QTcorr 5th Percentile and Below	296	291	278	213	0
QTcorr 5th to 50th Percentile	2661	2619	2471	1929	0
QTcorr 50th to 95th Percentile	2660	2607	2449	1883	0
QTcorr 95th Percentile and Above	622	447	365	252	0

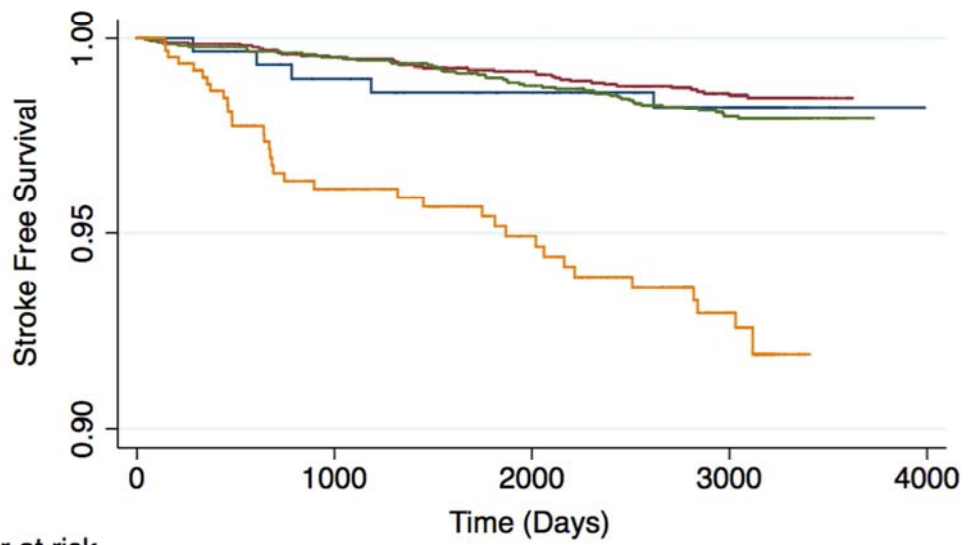




**Number at risk**

	0	1000	2000	3000	4000
QTcorr 5th Percentile and Below	296	285	270	207	0
QTcorr 5th to 50th Percentile	2661	2604	2444	1898	0
QTcorr 50th to 95th Percentile	2660	2595	2415	1847	0
QTcorr 95th Percentile and Above	623	443	364	253	0





**Number at risk**

	0	1000	2000	3000	4000
QTcorr 5th Percentile and Below	296	288	275	209	0
QTcorr 5th to 50th Percentile	2661	2619	2473	1923	0
QTcorr 50th to 95th Percentile	2660	2616	2458	1884	0
QTcorr 95th Percentile and Above	621	448	372	262	0

