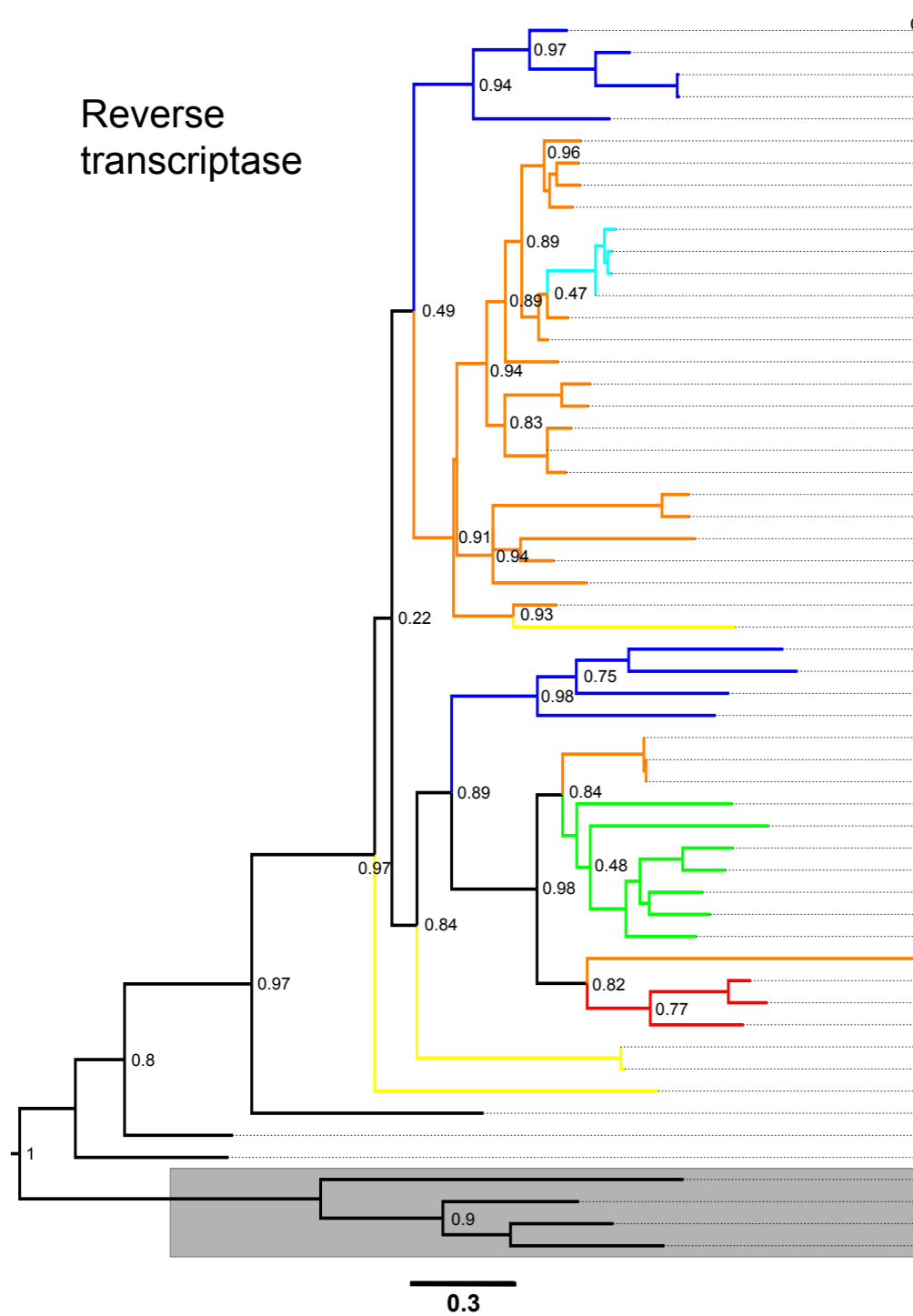


Reverse transcriptase



- Oreochromis niloticus – NYNRYN-like (LOC102075518)
- Gasterosteus aculeatus – VMRC28-140H20
- Zebrafish – LG25
- Zebrafish – LG15
- Tetraodon nigroviridis – ERV3
- Chelonia mydas– contig151895 (NCBI)
- Chrysemys picta – LOC101946010 (NCBI)
- Chrysemys picta – JH586387 (Ensembl)
- Chelonia mydas– contig177636 (NCBI)
- Latimeria chalumnae – JH126634/contig18985**
- Latimeria chalumnae – contig25502 (NCBI)**
- Latimeria chalumnae – contig956391 (NCBI)**
- Latimeria chalumnae – contig956312 (NCBI)**
- Alligator mississippiensis – ERV1 (Repbase)
- Crocodylus porosus –ERV1 (Repbase)
- Chrysemys picta – JH584630 (Ensembl)
- Pelodiscus sinensis– JH207364 (Ensembl)
- Pelodiscus sinensis– JH208038 (Ensembl)
- Chrysemys picta – LOC101948489 (NCBI)
- Chrysemys picta – ERV1 (Repbase)
- Chrysemys picta – JH584416 (Ensembl)
- Chrysemys picta – LOC101937828 (NCBI)
- Gavialis gangeticus – ERV1 (Repbase)
- Chrysemys picta – JH584987 (Ensembl)
- Alligator mississippiensis – ERV1-3B (Repbase)
- Alligator mississippiensis – ERV1-4 (Repbase)
- Alligator mississippiensis – ERV1-8 (Repbase)
- Ambystoma maxicanum – ERV1
- Danio rerio – ZFREV (NCBI)
- Pundamilia nyererei – LOC102208405 (NCBI)
- Oryzias latipes – LOC101170592 (NCBI)
- Salmo salar – Sarcoma virus
- Anolis carolinensis (NCBI – 3)
- Anolis carolinensis (NCBI – 2)
- Anolis carolinensis (NCBI – 1)
- Homo sapiens – ERV type C oncovirus
- Sus scrofa – Chromosome X sequence
- Phascolarctos cinereus - retrovirus
- Feline leukemia virus
- Callithrix jacchus – CH259 – 58H12
- Reticuloendotheliosis virus
- Heterocephalus glaber – LOC101715759 (NCBI)
- Chrysemys picta – EMC3
- Taeniopygia guttata – BA-280G18
- Pseudopodes humilis – LOC102110930 (NCBI)
- Gallus gallus – Chromosome W sequence
- Xenopus tropicalis – contig1834 (NCBI)
- Xenopus tropicalis – contig1448 (NCBI)
- Xenopus tropicalis – XTERV1
- Danio rerio – NYNRYN-like LOC101884601 (NCBI)
- Latimeria chalumnae – JH127224 (Ensembl)
- Xenopus tropicalis – ERV1 (Repbase)
- Chrysemys picta – Gypsy-24 (Repbase)
- Crocodylus porosus – Gypsy-20 (Repbase)
- Chrysemys picta – Gypsy-10 (Repbase)
- Danio rerio – Gypsy K02A2

Integrase core domain

