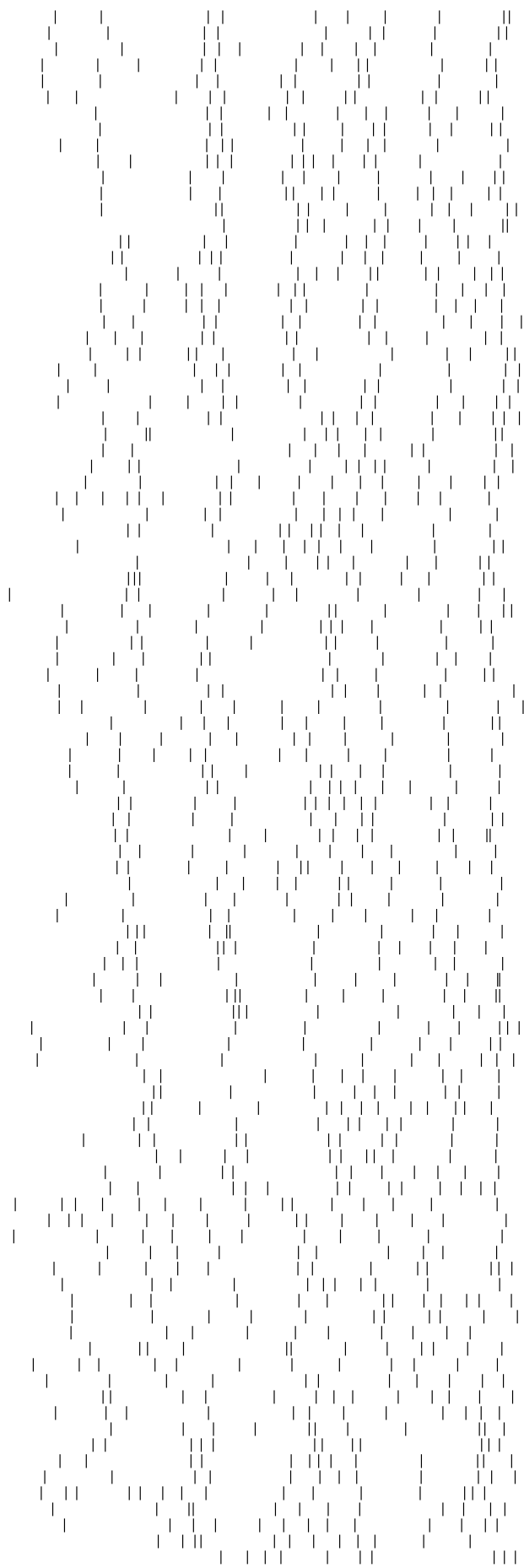
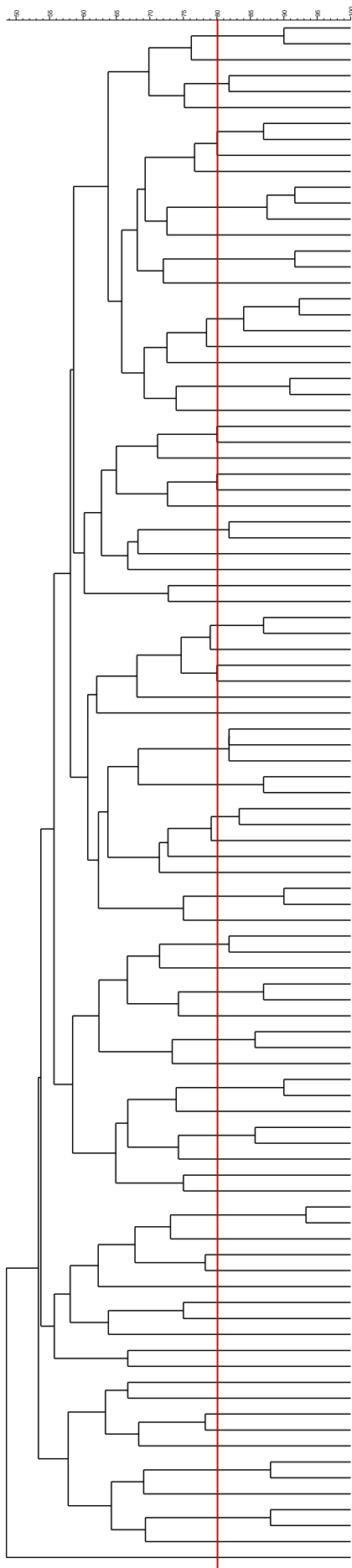


Macrorestriction pattern



Isolate ID	Cluster (Cl.)
Ma358	I
Ma795	I
Ma427	
Ma185	II
Ma864	II
Ma846	
Ma302	III
Ma597	III
Ma378	
Ma439	
Ma123	IV
Ma147	IV
Ma603	IV
Ma114	
Ma174	V
Ma342	V
Ma702	
Ma651	VI
Ma682	VI
Ma774	VI
Ma698	
Ma453	
Ma183	VII
Ma792	VII
Ma436	
Ma420	
Ma475	
Ma880	
Ma232	
Ma566	
Ma505	
Ma122	VIII
Ma488	VIII
Ma793	
Ma182	
Ma47	
Ma527	
Ma459	IX
Ma623	IX
Ma699	
Ma368	
Ma466	
Ma444	
Ma92	
Ma11	X
Ma380	X
Ma238	X
Ma346	XI
Ma656	XI
Ma213	XII
Ma558	XII
Ma478	
Ma90	
Ma30	
Ma240	XIII
Ma357	XIII
Ma195	
Ma151	XIV
Ma281	XIV
Ma117	
Ma326	XV
Ma88	XV
Ma253	
Ma365	XVI
Ma548	XVI
Ma192	
Ma19	XVII
Ma332	XVII
Ma4	
Ma464	XVIII
Ma791	XVIII
Ma395	
Ma248	
Ma311	
Ma626	XIX
Ma889	XIX
Ma415	
Ma363	
Ma517	
Ma555	
Ma416	
Ma678	
Ma479	
Ma351	
Ma404	
Ma153	
Ma56	
Ma103	
Ma175	
Ma885	
Ma263	XX
Ma86	XX
Ma502	
Ma491	XXI
Ma863	XXI
Ma777	
Ma430	

Dendrogram of pulsed-field gel electrophoresis profiles of epidemiologically independent *Streptococcus uberis* isolates collected from cases of bovine clinical mastitis in Sweden. Isolate code (IDnr.) and cluster (Cl.) names are shown, as well as the 80% cutoff line (vertical line) for clusters.