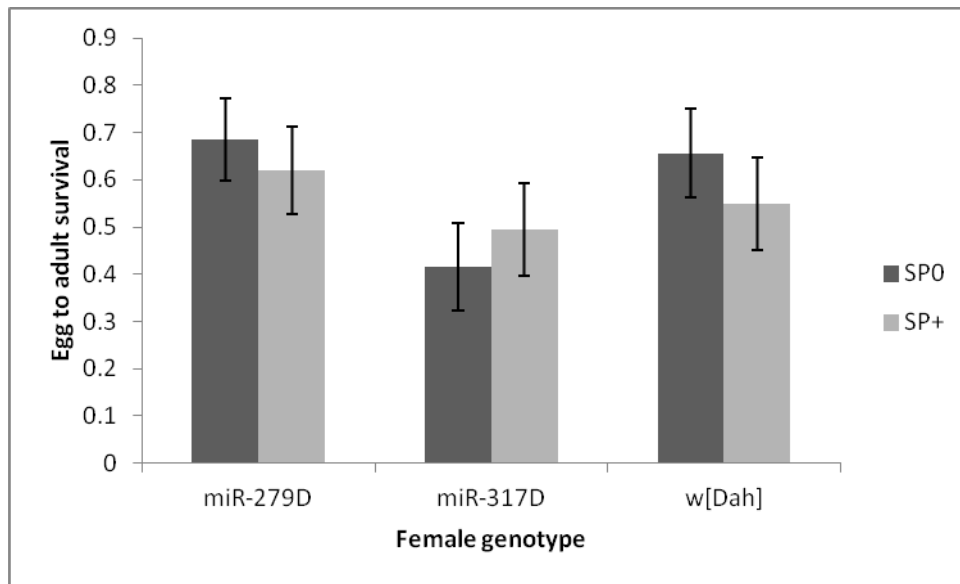
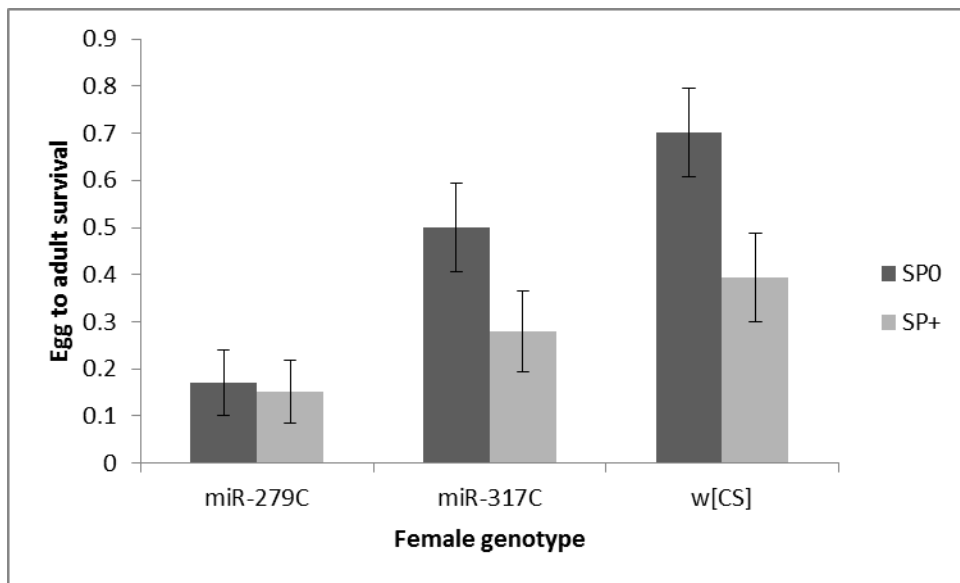


A



B



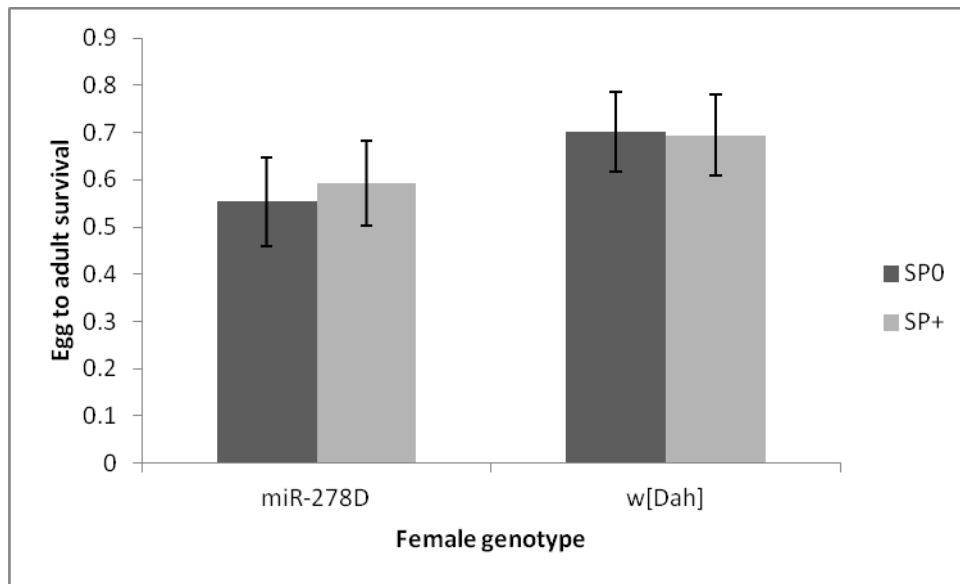
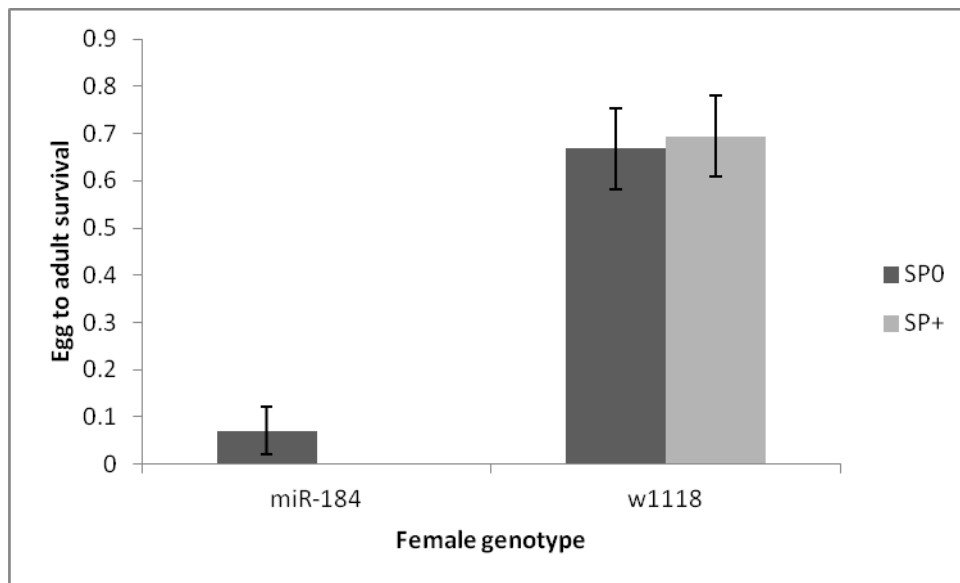
C**D**

Figure S3 Egg-to adult survival (mean \pm SE) for the miRNA-lacking females in the 24 hr intermating interval following a single mating to either a SP-lacking (SP^0) or a control male (SP^+): (A) hypomorphic *mir-279D* and *mir-317D* females backcrossed into the wild-type $w^{[Dah]}$ genetic background, (B) hypomorphic *mir-279C* and *mir-317C* females backcrossed into $w^{[CS]}$, (C) *mir-278D* knock out females in $w^{[Dah]}$ and (D) *mir-184* knock out females in the w^{1118} background.