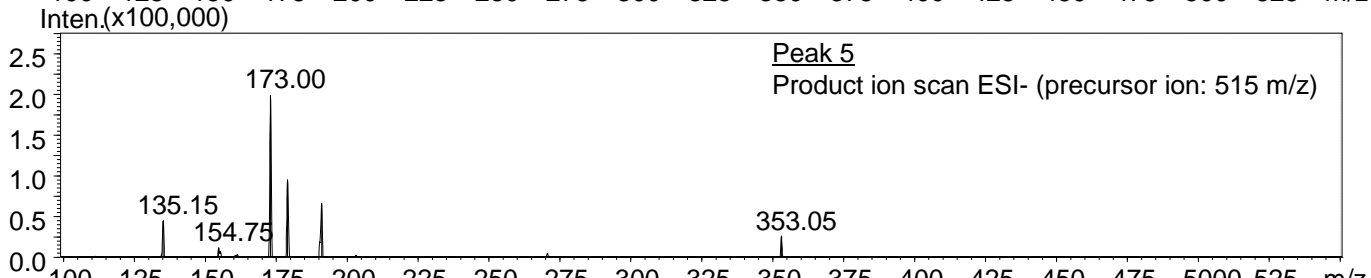
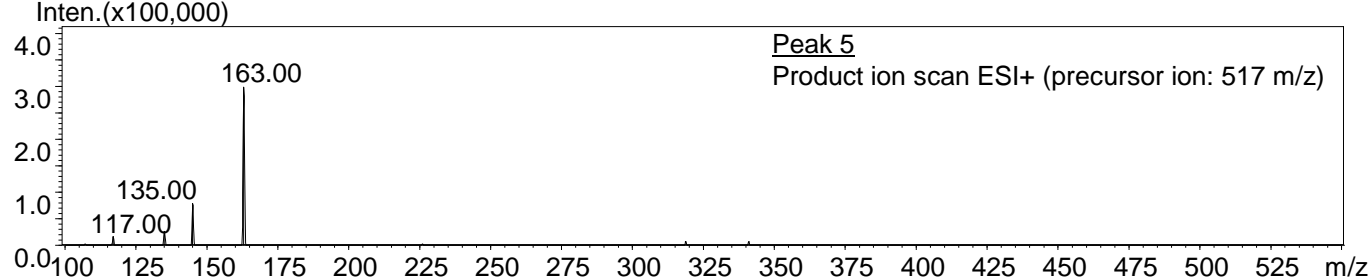
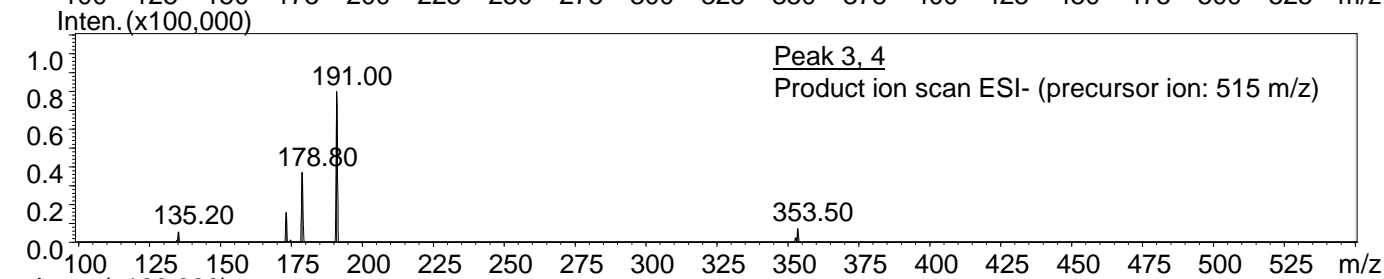
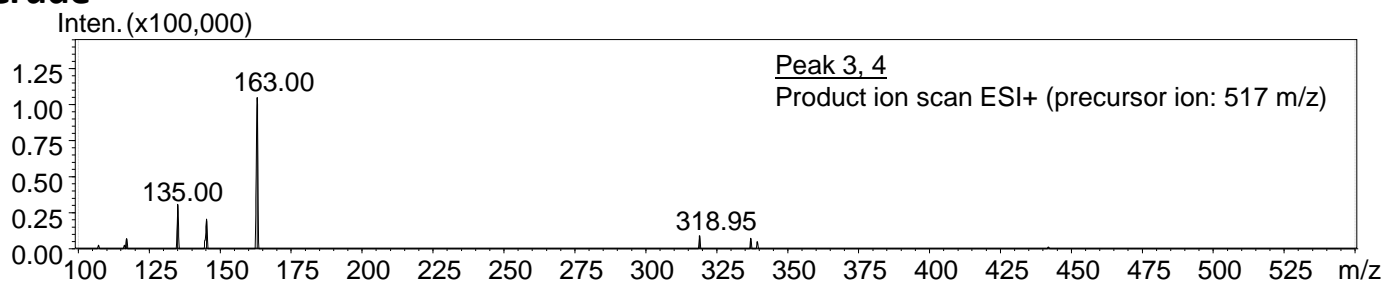


Crude



Crude + caffeoyl-CoA

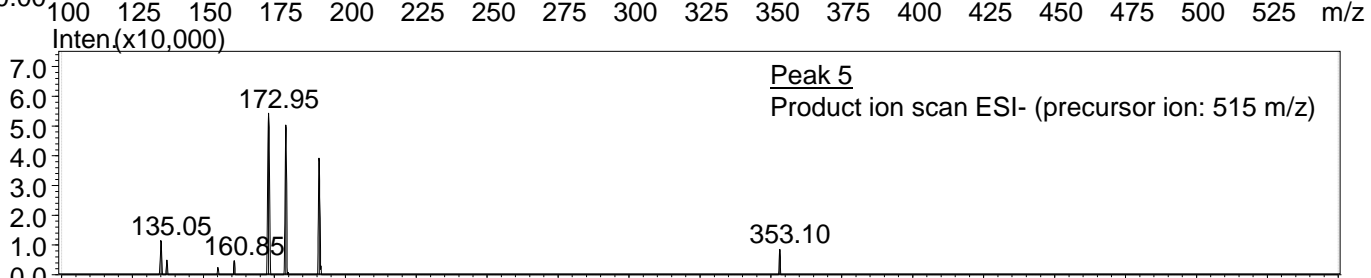
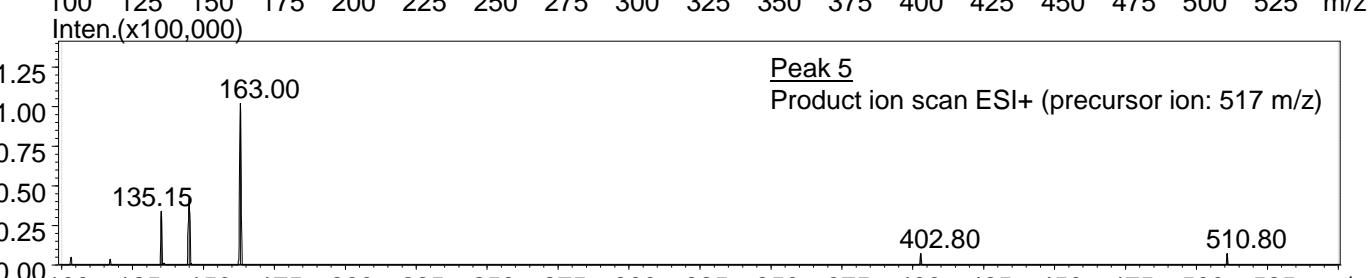
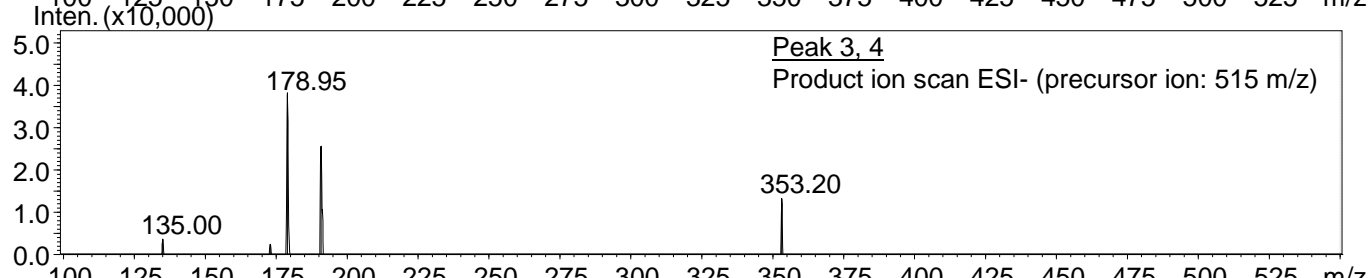
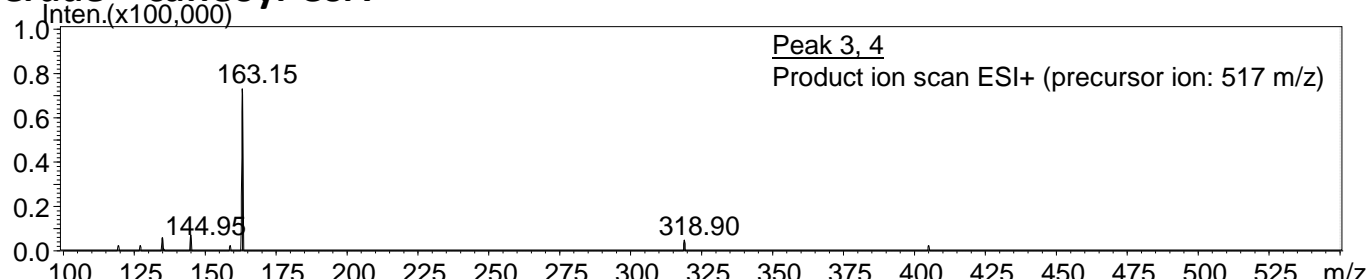


Fig. S1. LC-PDA-MS/MS profile of crude extract of ripe tomatoes incubated with CGA alone or CGA and caffeoyl CoA (Crude and Crude + caffeoyl-CoA) and ESI+ and ESI- product ion scan of diCQA in both samples (precursor ions: 517 m/z and 515 m/z, respectively). Peak numbers: 3. 1,5-diCQA; 4. 3,5-diCQA; 5. 4,5-diCQA.