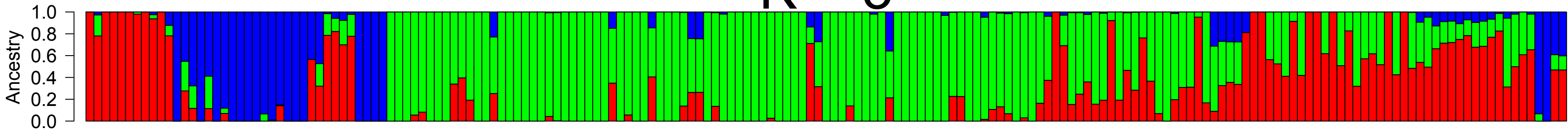
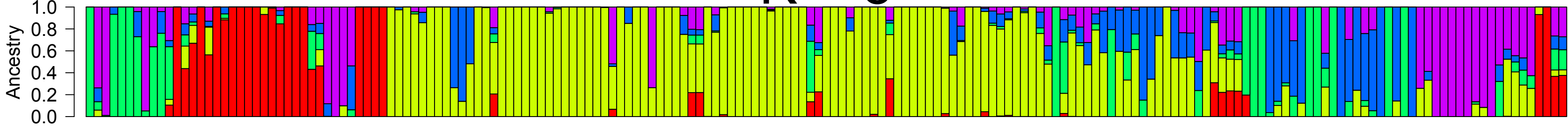


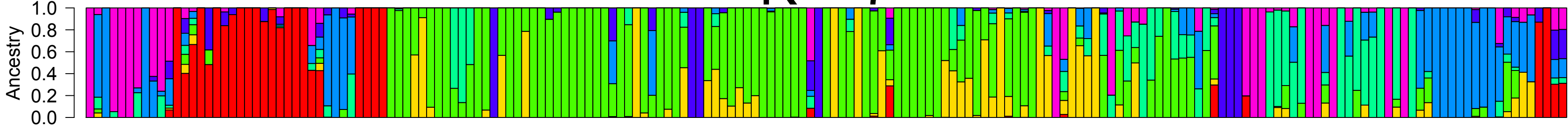
# K = 3



# K = 5



# K = 7



Name	Race
KALABAN (00-KO-F5DT-19)	C
GRINKAN	C
TIANDOUGOU (98-SB-F2-78)	C
00-CZ-F5P-25	C
00-SB-F5DT-5	C
00-CZ-F5P-135	C
MALISOR-92-1	C
03-SB-FDT-105	C
ARE MADEPOYI	C
DANG-DONLONG	C
GNE'QUE(NIE'GUE)	C
V328 JENJARI	D
V444 JENJARI	D
S178 MATCHÉ DA KOUNGNA	D
S378_EL_KOUFQUMBASSAU	D
S474_KAOURA	D
MDK	D
MOTA JA	D
LEPON RAKUMI-3	D
FARA DAWA	D
LANKONSOU	D
MACHE DAKUMYA	D
EL MACIKA	D
MOTA FARA	D
JA DAWA	D
LONKONSA	D
GADIABA	D
LAKAHERI	D
08-BE-F5P-4	D
KELA(P COMPACTE) / CE180-33	D
SSV2006008(ZABUWA)*GRINKAN-2-4	DGC
SSV2006008(ZABUWA)*GRINKAN-2-5	DGC
SSV2006008(ZABUWA)*GRINKAN-6-2	DGC
(SAMBALIMA(6)04-SIR F5T-35)-1-1	DMam
S385_MAKAHO DA WAYO	DMam
DAWA MAKAFO-2	DMam
DAWA MAKAFO-7	DMam
MAKAFON DAWA	DMam
BIBALWILI DE TIORIBOUGOU	G
SAKOYKA-BA	G
DAGNAILI KOSSUROU	G
MIPSOR 90-30-23	G
CGM 199-1-1	G
CSM 660	G
CSM 485	G
CSM 335	G
DARRELL KEN	G
N'TENIMISSA	G
WASSA	G
5147 OR	G
CMDT 45	G
KENDE YENKO	G
FOLOMBA	G
IPSO01	G
FAMBE	G
CSM 219	G
SGBA-A	G
SGBA-D	G
SGBA-E	G
DIO-A	G
DOUA-B	G
DOUA-G	G
S1-5	G
B1-2	G
B2-3	G
B2-5	G
IS 30804	G
BOBODJÉ	G
97-SB-F5DT-138 (FAUX)	G
CSM-63E	G
IS 25650	G
IS 15401	G
IS 26077	G
CSM388	G
IS 6745BF	G
SEGUEYANA CZ 24/25	G
SI 22	G
SL22-1	G
SL118	G
SL291	G
SL328	G
SL330	G
SL331	G
SL337	G
SL339	G
SL816	G
50-32	G
62-12	G
92-53	G
92-54	G
92-62	G
S165_SOCOMBA	G
EL DELE	G
KENIKEDJÉ	G
SOUFIGNÉ KINTI	G
NONITELI	G
KENIGUEDJÉ	G
HAMOBÉRO	G
GADIABADIN TEROW	G
KENINGUE KANDIA	G
WERENOU	G
KENINGUE	G
KAUSSOULOU	G
BARO	G
KENINGUE SOUROU	G
DIARRALAKANIO	G
HAMABIO	G
YALADIAN	G
KENIKE	G
08-BE-F5P-51	G
08-BE-F5P-15	G
MADAME	G
EMENA BANKO	G
YELICO KOULE (BLANC)	G
HINA	G
LATA	G
TOROBA	G
KAYAKA (DJOGO)	G
NIOBLENI (TENEYA)	G
SEGUEYANA (SEHUN FULALA)	G
DJULELI	G
GN07E2-6-V	G
00-SB-F5DT-30	GC
CIRAD 406	GC
WELI	GC
NAFALENT5	GC
NAFALENP6	GC
LINA 3	GC
04-SIR-F5T-35	GC
NIÉTA (97-SB-F5DT-74-2)	GC
04-SIR-F5T-13-1	GC
SANGATIGUI (98-BE-F5P-84)	GC
97-SB-F5DT-150	GC
02-SB-FDT-30	GC
ZARRABLEN	GC
KENIKEBA	GC
01-CZ-F5P-263	GC
01-BE-F5P-15	GC
ZARRADJE	GC
04-KANIKO-F5DT-26	GC
00-SB-F5DT-127	GC
92-58	GC
EL KURUMBASSAU	GC
MOTA	GC
EL RURUKA	GC
07-CZ-F5P-56	GC
03-SB-F5DT-132	GC
06-SB-F4DT-15	GC
07-SB-F5DT-55	GC
09-KO-F5DT-99-1	GC
09-SB-F5DT-77	GC
07-KO-F5DT-105	GC
09-SB-F5DT-141	GC
08-CZ-F5P-29 TYPE 92-1	GC
09-CZ-F5P-138	GC
010-CZ-F4P-22 Ct	GC
08-CZ-F5P-63	GC
09-KO-F5DT-2	GC
09-KO-F5DT-142	GC
09-KO-F5DT-114-2	GC
09-SB-F5DT-111	GC
09-KO-F5DT-114-1	GC
09-CZ-F5P-1	GC
09-CZ-F5P-134	GC
09-BE-F5P-33	GC
09-CZ-F5P-129	GC
09-BE-F5P-5	GC
(IS 15401*98-SB-F2-78)-3-1	GC
(IS 15401*98-SB-F2-78)-4-1	GC
(IS 15401*98-SB-F2-78)-5-4	GC
(IS 15401*98-SB-F2-78)-5-5	GC
(IS 15401*98-SB-F2-78)-5-9	GC
(IS 15401*98-SB-F2-78)-7-3	GC
(IS 15401*98-SB-F2-78)-7-5	GC
(IS 15401*98-SB-F2-78)-8-1	GC
(IS 15401*98-SB-F2-78)-8-1	GC
(IS 15401*98-SB-F2-78)-9-3	GC
(IS 15401*98-SB-F2-78)-9-5	GC
(IS 15401*MALISOR 92-1)-1-2	GC
(BERKU MANGA*02-SB-F4DT-298)-2-1	GC
SS07(DJIBRILS)SEL-27-1	GC
SS07(MADOUJ)SEY-42-V	GC
ND07 E2(17X30) F2-6-V	GC
V274_BOGOBA	GD
LEPON RAKUMI-16	GD
(SSV 20055*CGM 19/9-1-1)-1-1	GD
(SSV 20055*CGM 19/9-1-1)-2-2	GD