

d PARP1 peptides identified by mass spectrometry

position	peptide sequence
108 ¹	K.TLGDFAAEYAK.S
165 ¹	K.NREELGFRPEYSASQLK.G
207 ¹	K.RKGDEVDGVDEVAK.K
269 ¹	K.QQVPSGESAILDR.V
452 ⁵	R.VVSEDFLQDVSASTK.S
486 ²	K.AEPVEVVAPR.G
551 ²	K.VFSATLGLVDIVK.G
684 ¹	K.AMVEYEIDLQK.M
747 ¹	K.KPPLLNNADSVQAK.V
779 ¹	R.GGSDDSSKDPIDVNYEK.L
865 ⁵	R.TTNFAGILSQGLR.I
878 ²	R.IAPPEAPVTGYMFGK.G
893 ¹	K.GIYFADMVSK.S

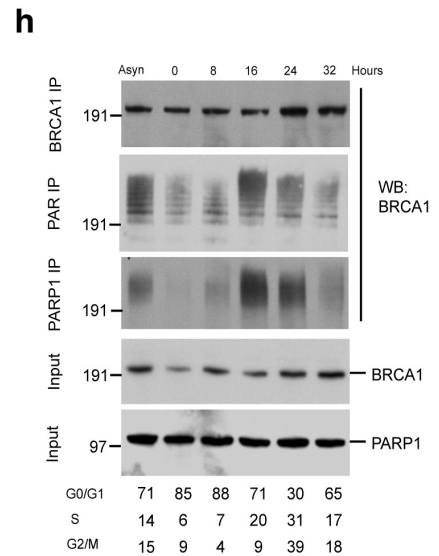
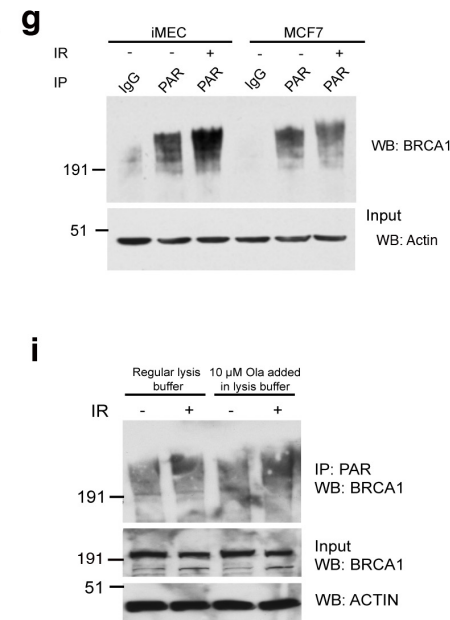
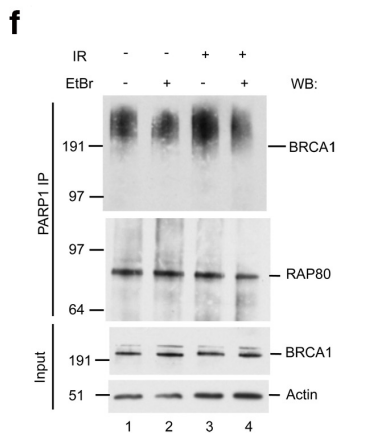
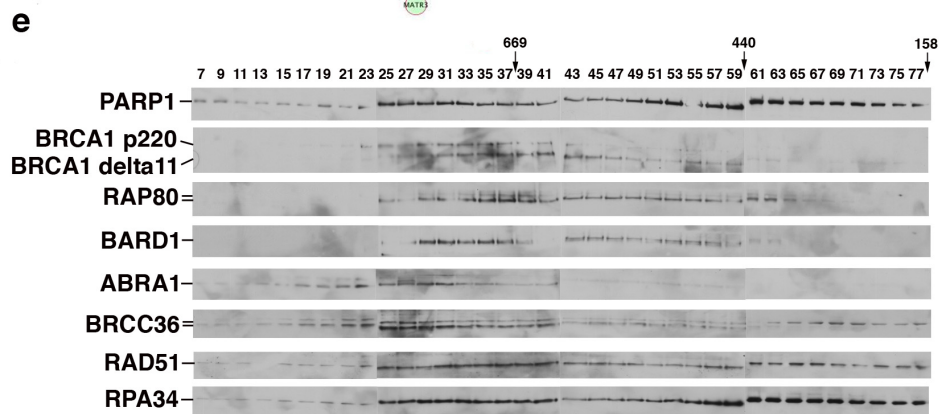


Figure S1

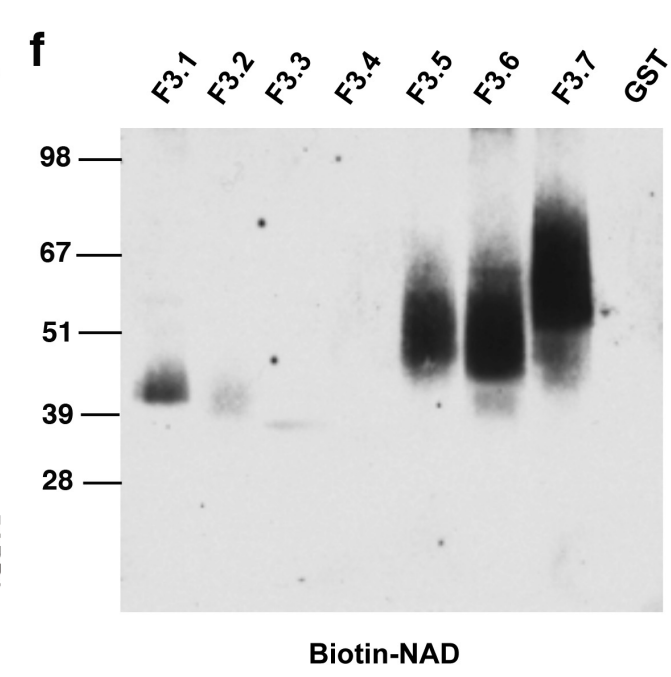
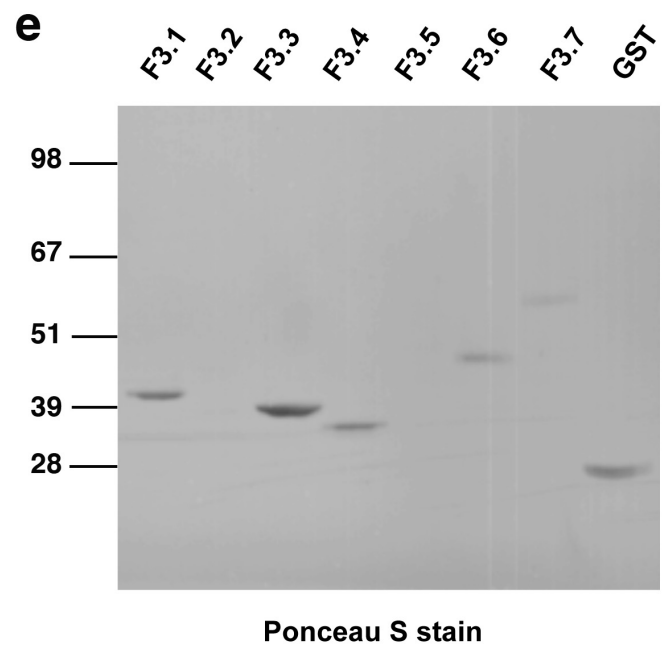
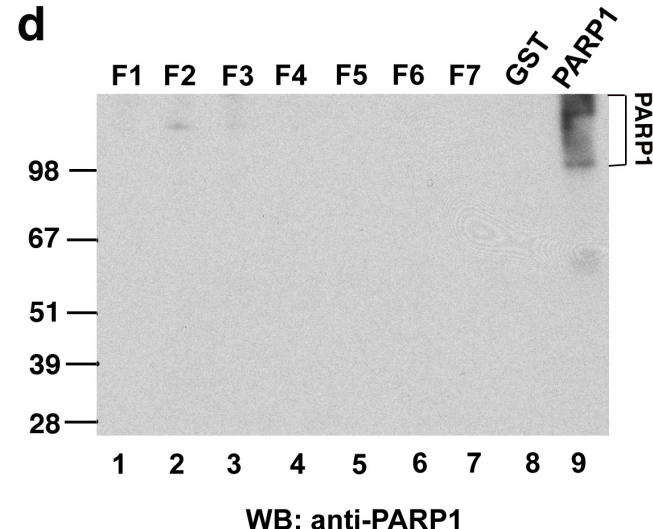
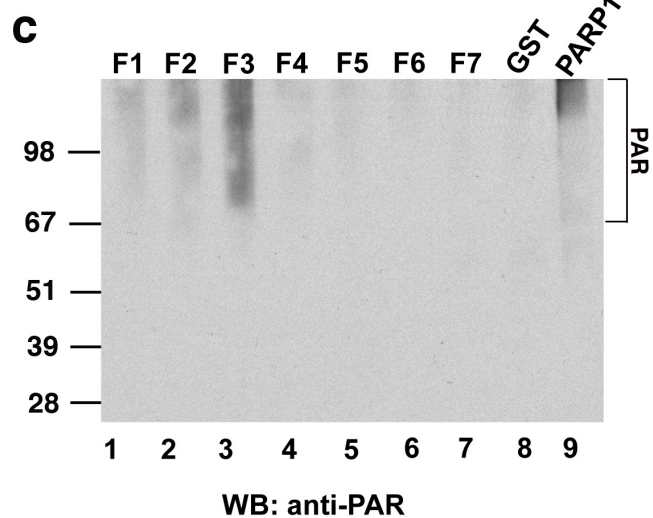
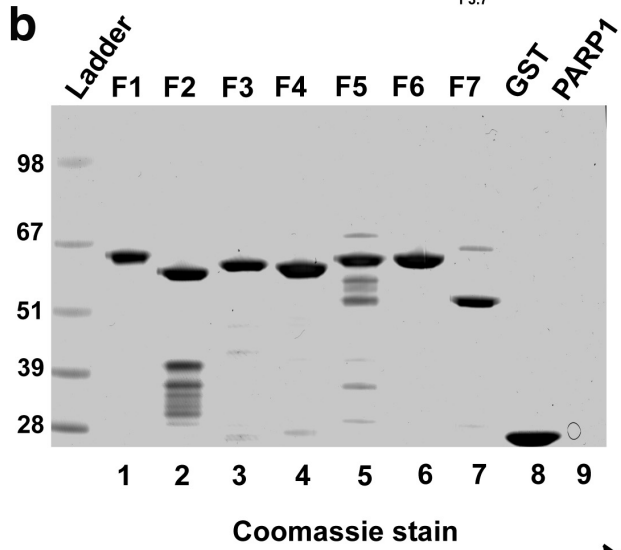
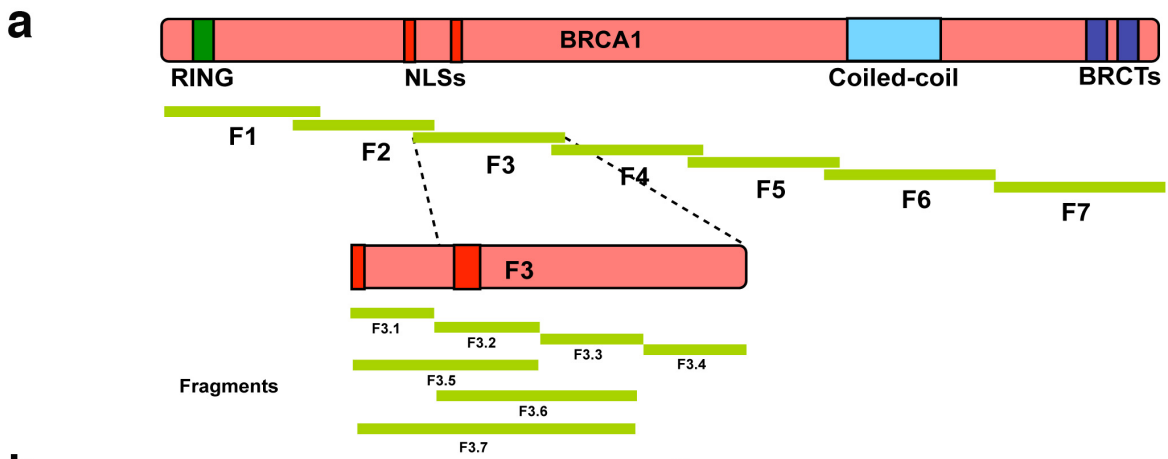


Figure S2

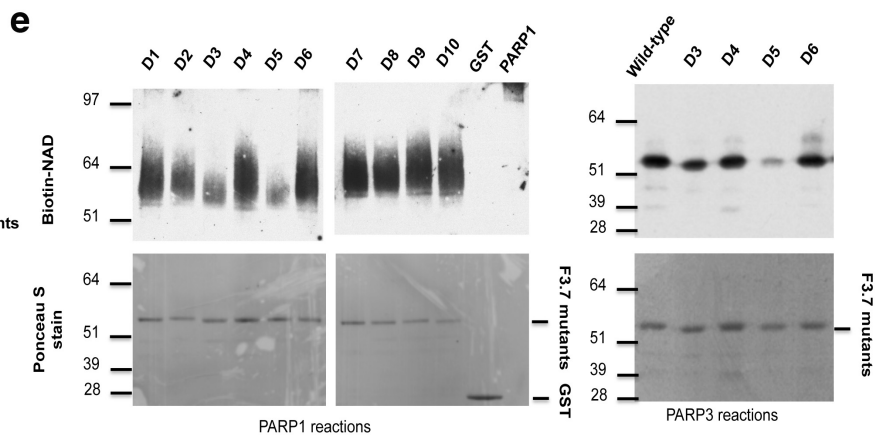
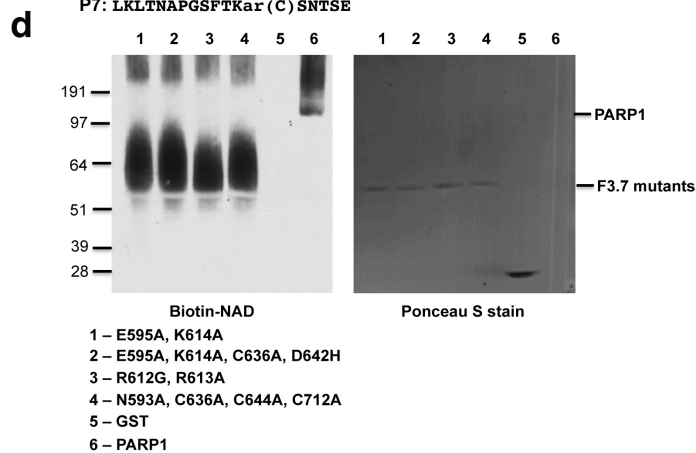
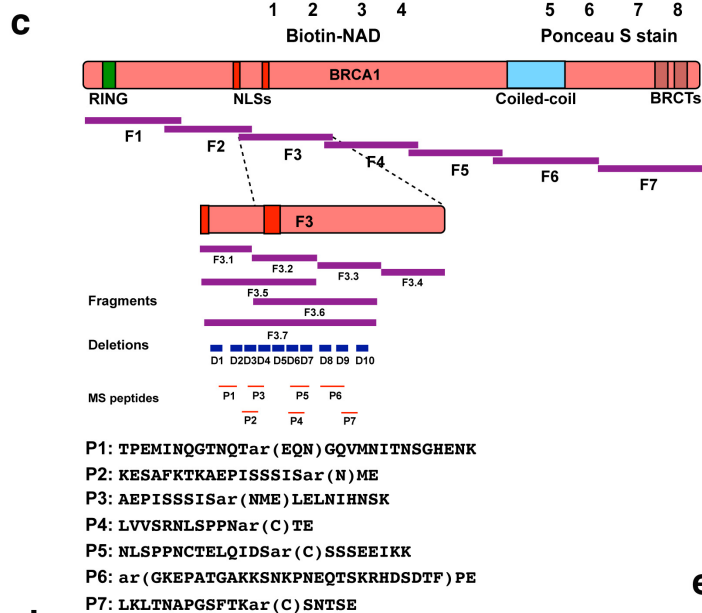
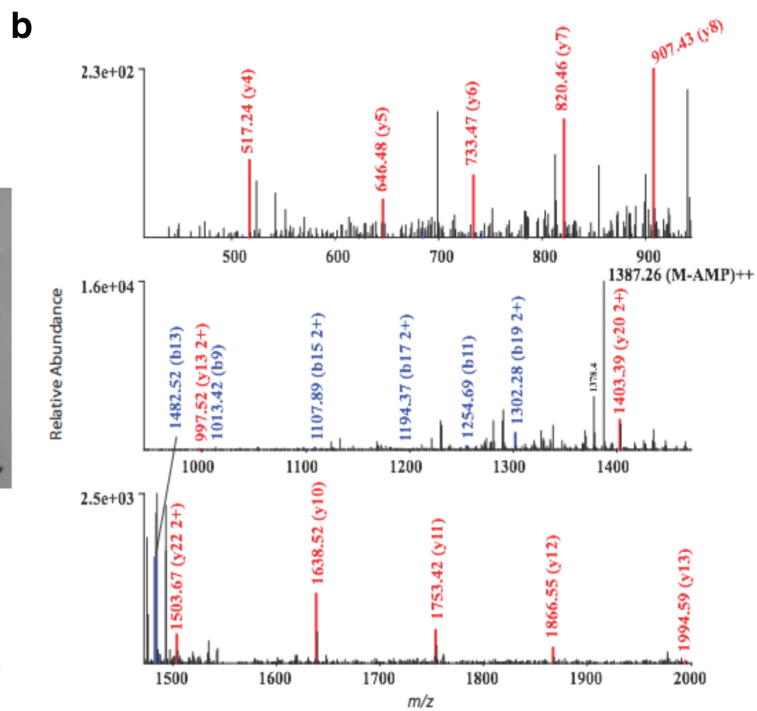
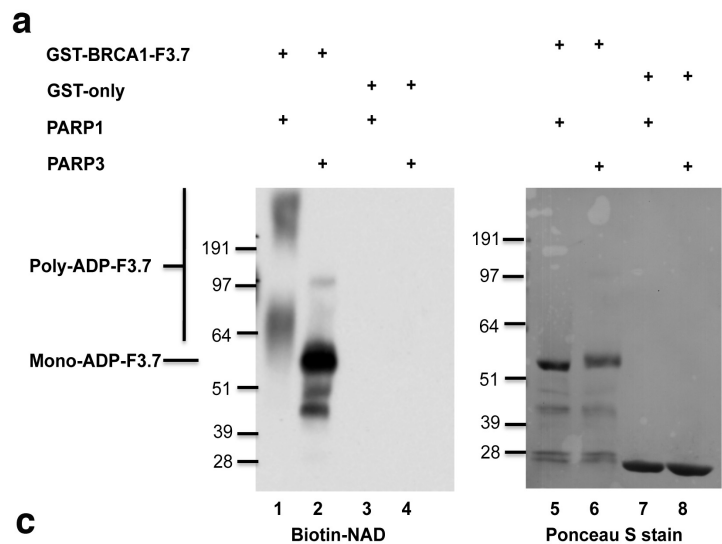
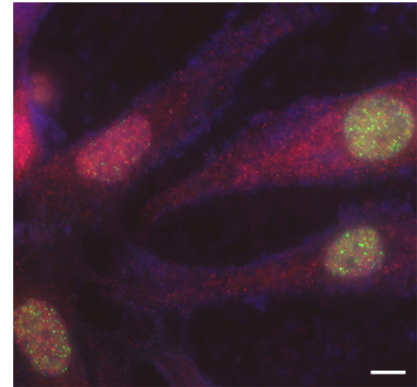
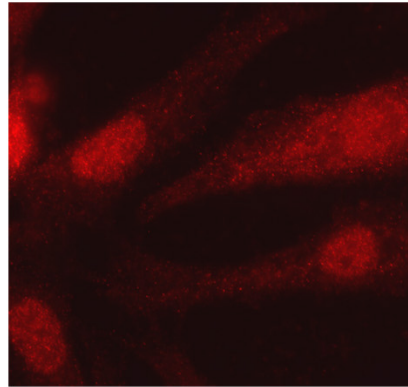
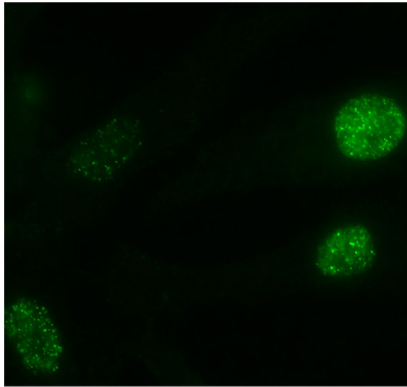


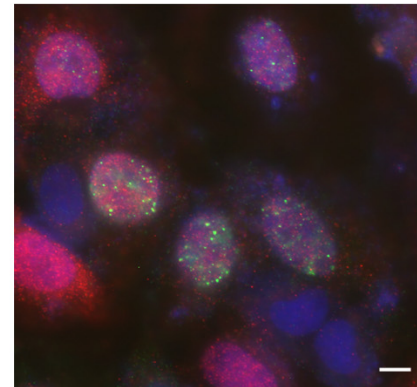
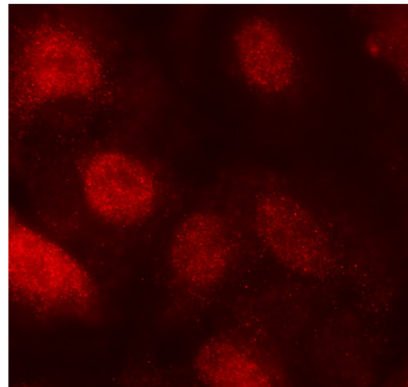
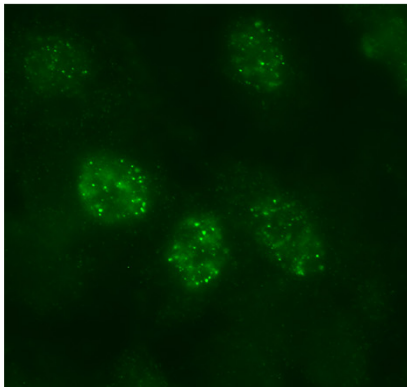
Figure S3

BRCA1-HA-WT



79.5%

BRCA1-HA-D5



81.5%

HA

Cyclin A

Merge+DAPI

Figure S4

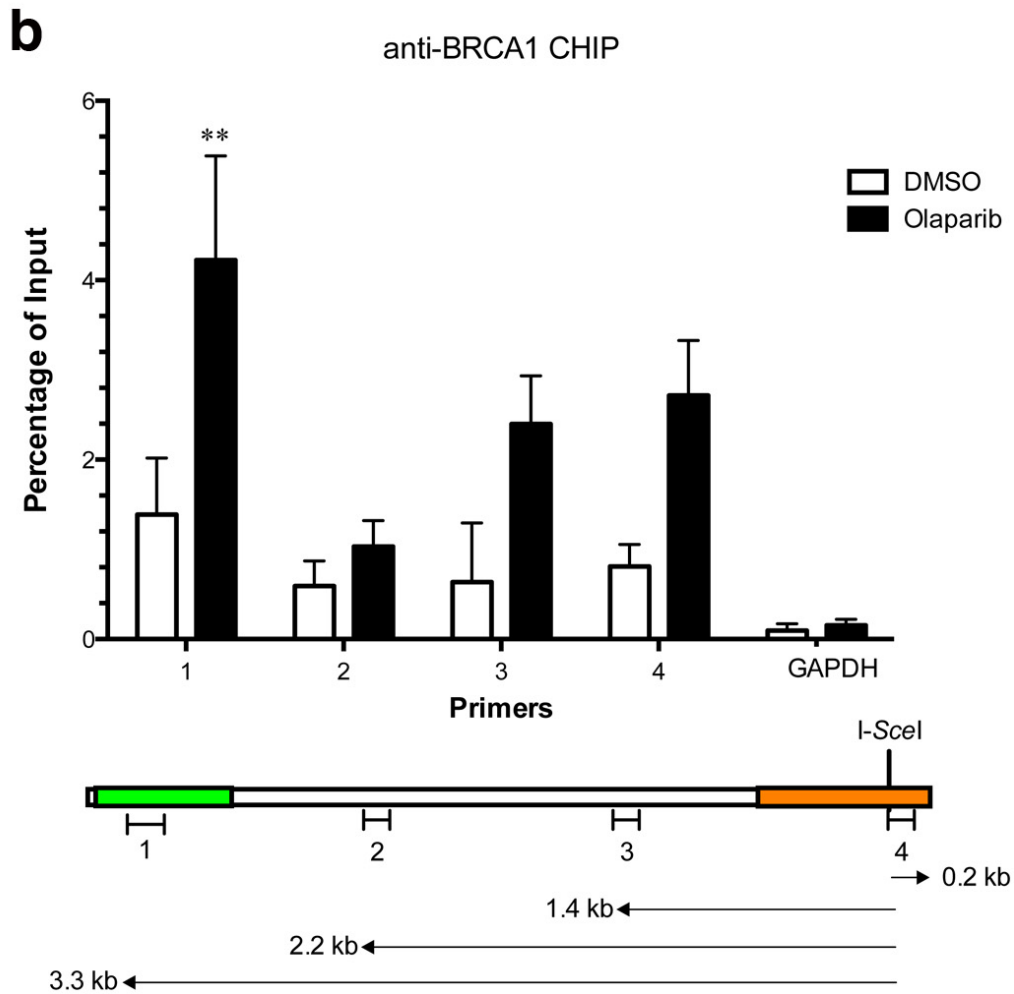
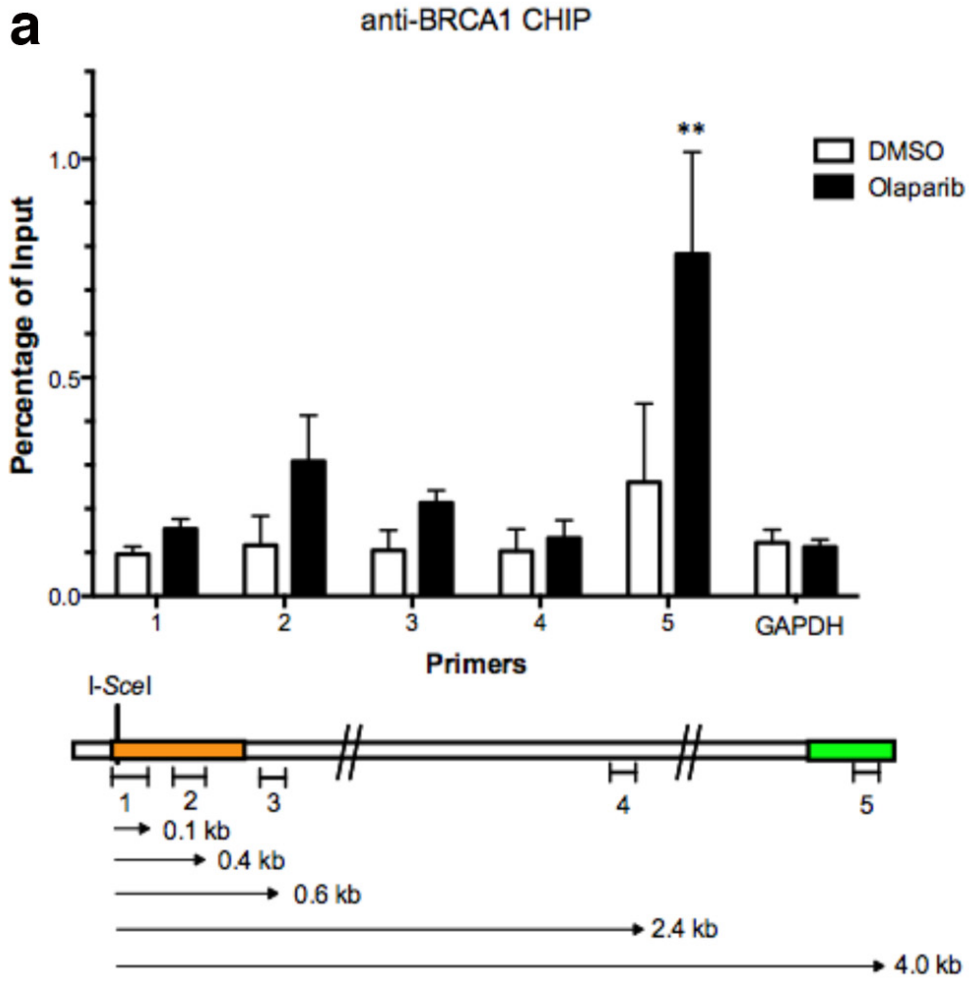


Figure S5

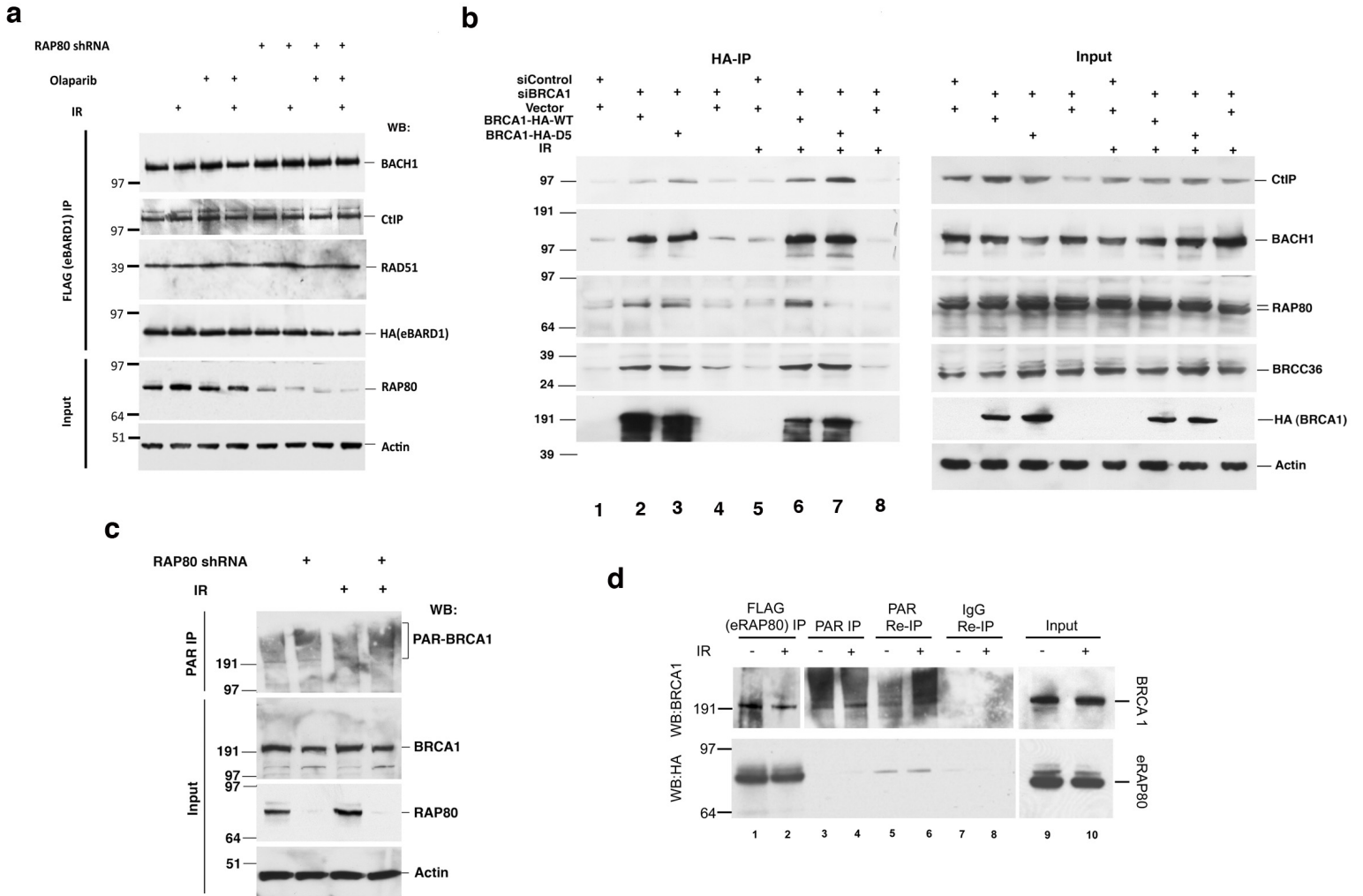


Figure S6

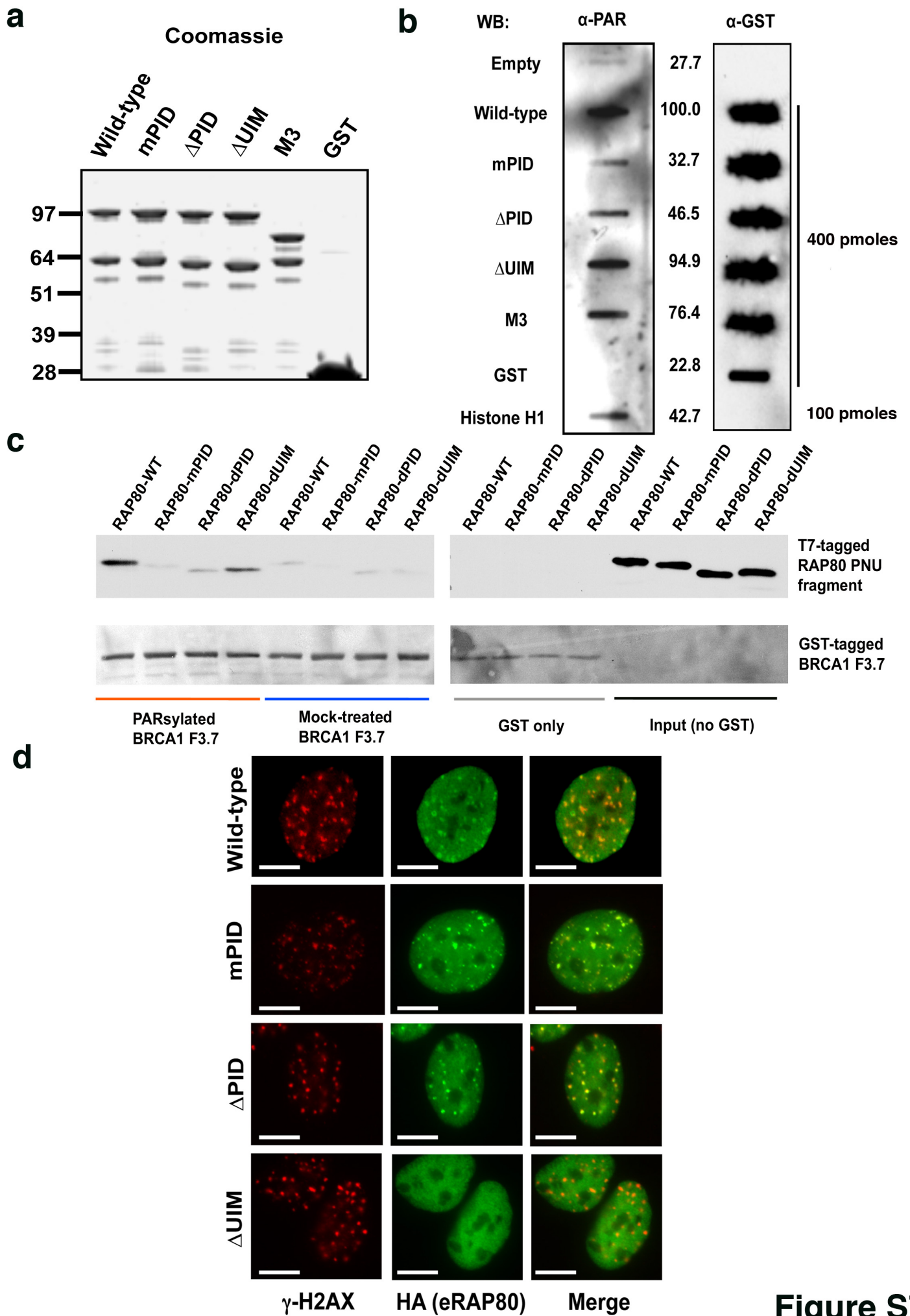
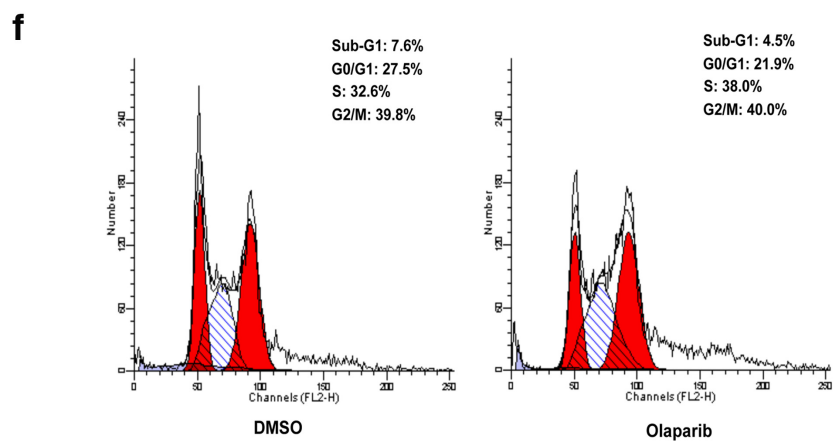
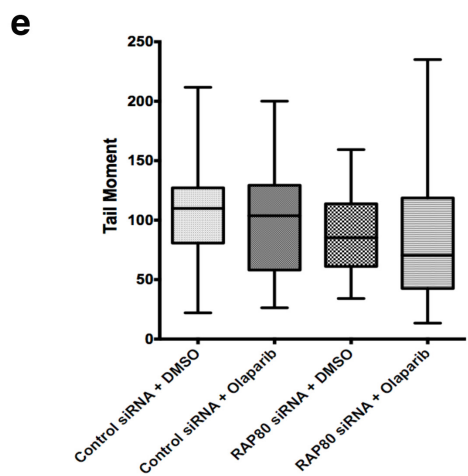
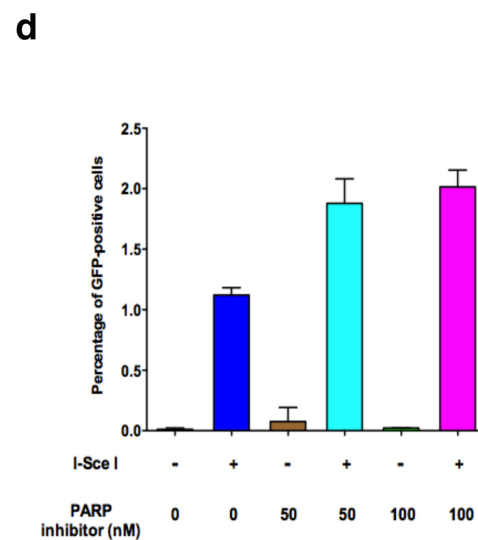
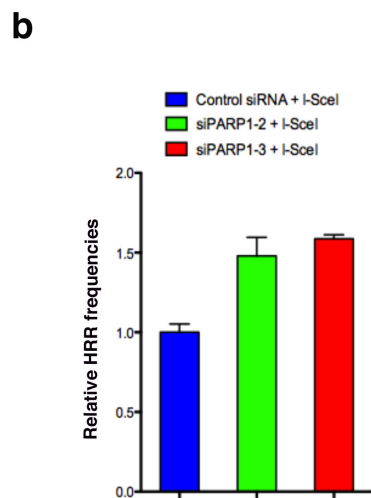
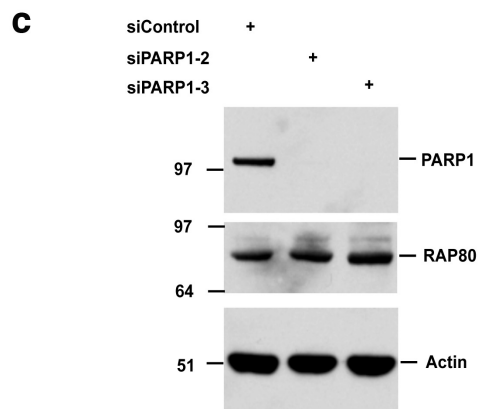
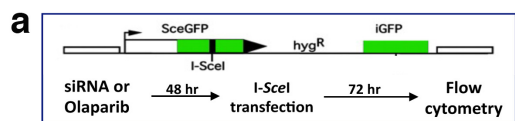
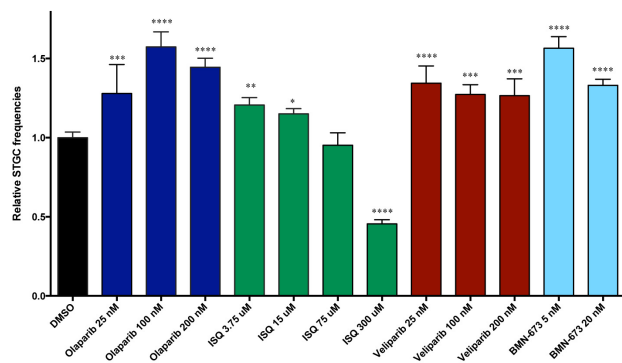


Figure S7



g **h** Effects of PARPI on I-SceI induced STGC

	IC50 (nM)
ISQ	~150
Olaparib	~5
Veliparib	~5
BMN-673	~0.5



i Effects of PARPI on I-SceI induced LTGC

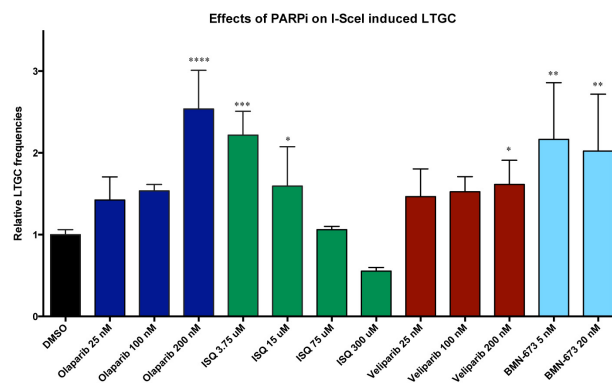
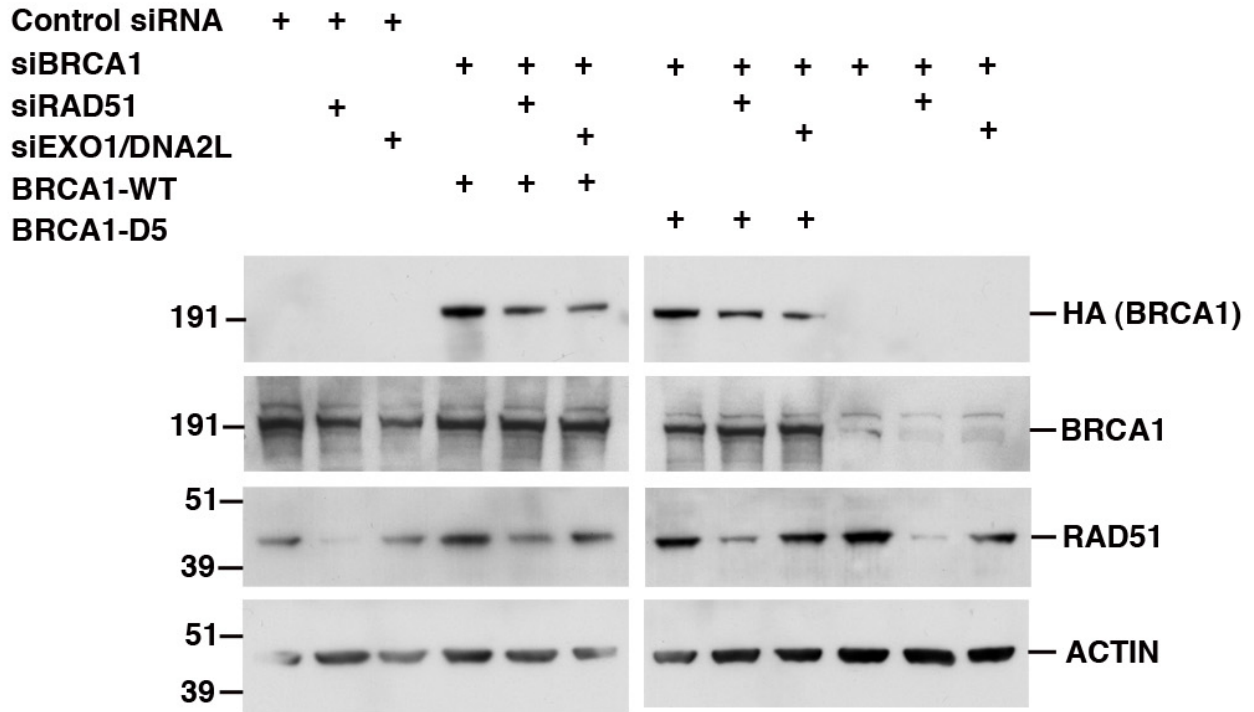


Figure S8

a



b

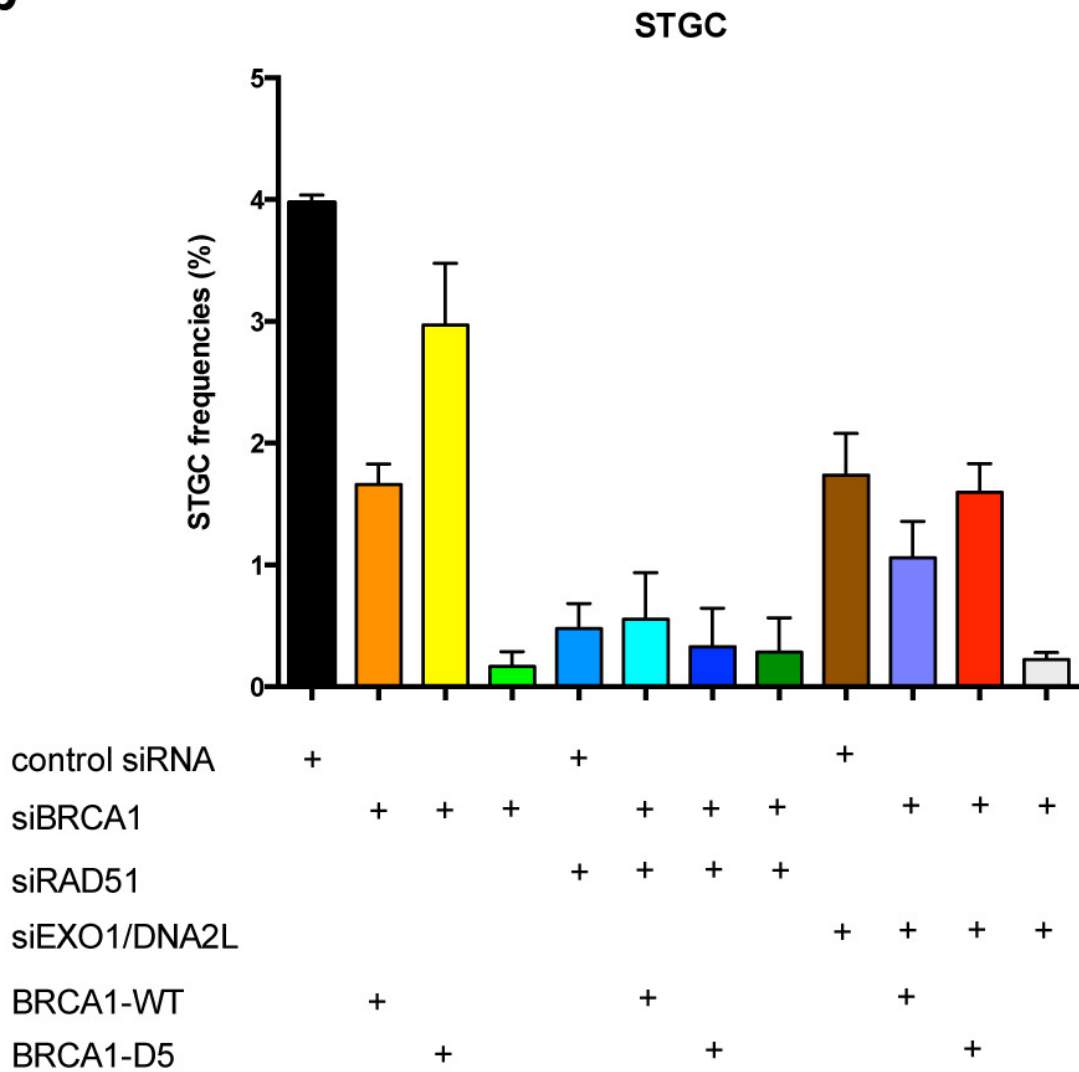


Figure S9